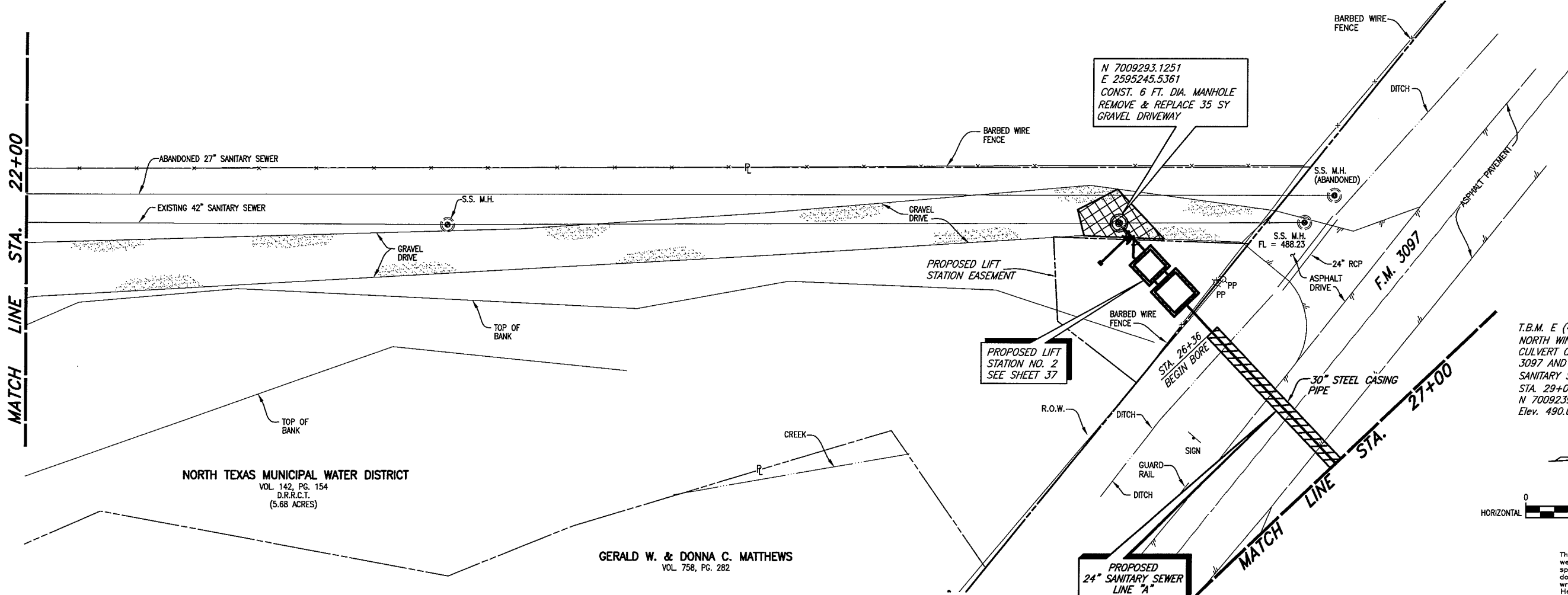


MATCH LINE STA. 22+00

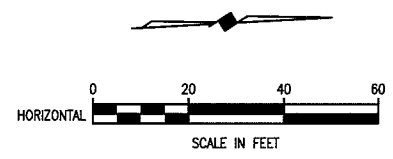
MATCH LINE STA. 27+00



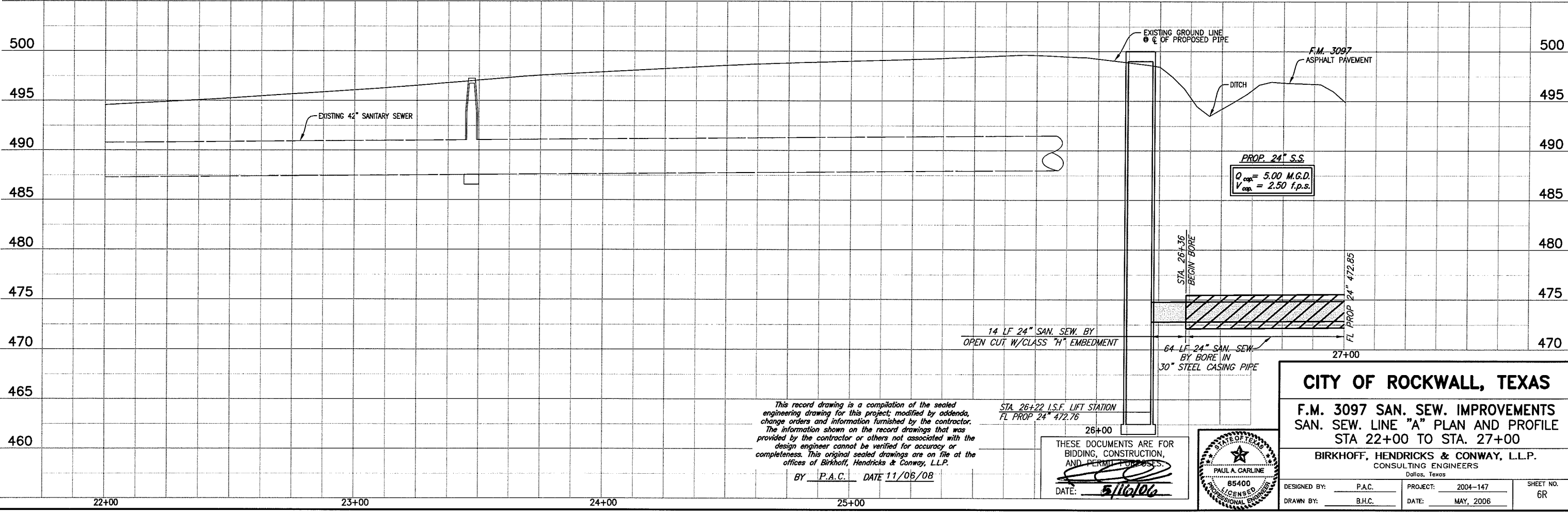
NORTH TEXAS MUNICIPAL WATER DISTRICT  
VOL. 142, PG. 154  
D.R.R.C.T.  
(5.68 ACRES)

GERALD W. & DONNA C. MATTHEWS  
VOL. 758, PG. 282

T.B.M. E (490): SQUARE CUT IN THE  
NORTH WINGWALL OF A 9'x9' BOX  
CULVERT ON THE NORTH SIDE OF F.M.  
3097 AND WEST OF COUNTY ROAD,  
SANITARY SEWER LINE "A"  
STA. 29+04.72, 17.60' LT.  
N 7009239.6872, E 2595473.64  
Elev. 490.05



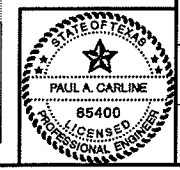
These plans and related specifications  
were prepared for construction of this  
specific project only. Reuse of these  
documents is not permitted without  
written authorization of Birkhoff,  
Hendricks & Conway, L.L.P.



This record drawing is a compilation of the sealed  
engineering drawing for this project; modified by addenda,  
change orders and information furnished by the contractor.  
The information shown on the record drawings that was  
provided by the contractor or others not associated with the  
design engineer cannot be verified for accuracy or  
completeness. This original sealed drawings are on file at the  
offices of Birkhoff, Hendricks & Conway, L.L.P.  
BY P.A.C. DATE 11/06/08

STA. 26+22 I.S.F. LIFT STATION  
FL PROP 24" 472.76

THESE DOCUMENTS ARE FOR  
BIDDING, CONSTRUCTION,  
AND PERMIT PURPOSES.  
DATE: 5/16/06



**CITY OF ROCKWALL, TEXAS**

**F.M. 3097 SAN. SEW. IMPROVEMENTS  
SAN. SEW. LINE "A" PLAN AND PROFILE  
STA 22+00 TO STA. 27+00**

**BIRKHOFF, HENDRICKS & CONWAY, L.L.P.**  
CONSULTING ENGINEERS  
Dallas, Texas

DESIGNED BY: P.A.C.	PROJECT: 2004-147	SHEET NO. 6R
DRAWN BY: B.H.C.	DATE: MAY, 2006	