

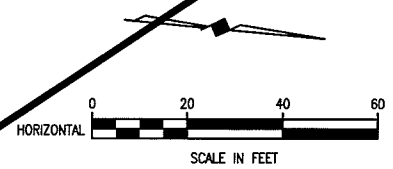
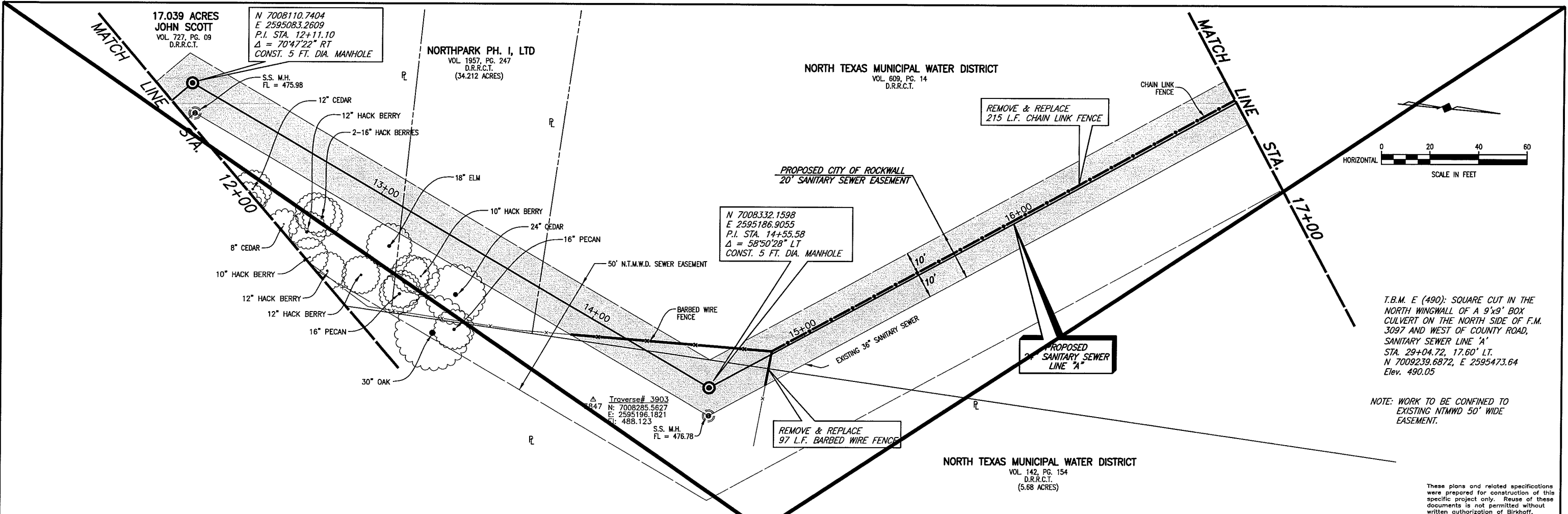
PLotted BY: AQUIVAREZ ON 11/16/2008

PLOT STYLE: 11x17D.ctb

PLOT SCALE: 1:40

H:\Projects\Rockwall\2004147\Line-A\Sheets\2004147_PP04.dwg

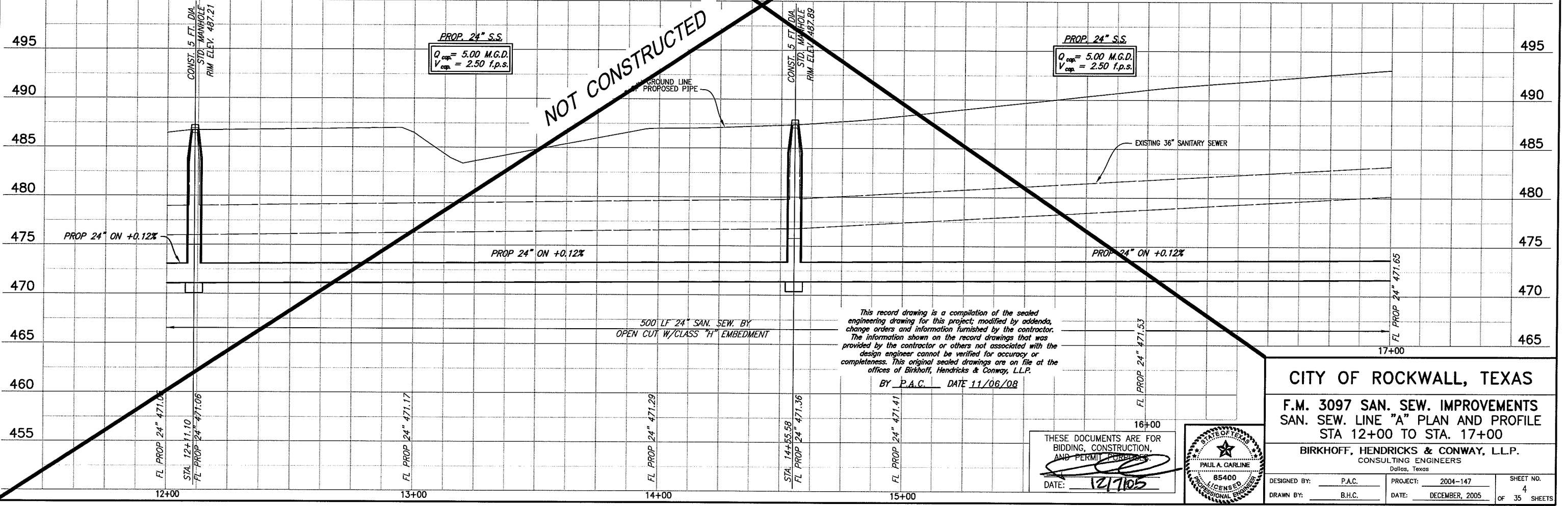
REVISED: 11/16/08 - AQUIVAREZ



T.B.M. E (490): SQUARE CUT IN THE NORTH WINGWALL OF A 9'x9' BOX CULVERT ON THE NORTH SIDE OF F.M. 3097 AND WEST OF COUNTY ROAD, SANITARY SEWER LINE 'A' STA. 29+04.72, 17.60' LT. N 7009239.6872, E 2595473.64 Elev. 490.05

NOTE: WORK TO BE CONFINED TO EXISTING NTMWD 50' WIDE EASEMENT.

These plans and related specifications were prepared for construction of this specific project only. Reuse of these documents is not permitted without written authorization of Birkhoff, Hendricks & Conway, L.L.P.



This record drawing is a compilation of the sealed engineering drawing for this project; modified by addenda, change orders and information furnished by the contractor. The information shown on the record drawings that was provided by the contractor or others not associated with the design engineer cannot be verified for accuracy or completeness. This original sealed drawings are on file at the offices of Birkhoff, Hendricks & Conway, L.L.P.

BY P.A.C. DATE 11/06/08

THESE DOCUMENTS ARE FOR BIDDING, CONSTRUCTION, AND PERMIT PURPOSES.
DATE: 12/10/05



CITY OF ROCKWALL, TEXAS
F.M. 3097 SAN. SEW. IMPROVEMENTS
SAN. SEW. LINE "A" PLAN AND PROFILE
STA 12+00 TO STA. 17+00

BIRKHOFF, HENDRICKS & CONWAY, L.L.P.
CONSULTING ENGINEERS
Dallas, Texas

DESIGNED BY: P.A.C.	PROJECT: 2004-147	SHEET NO. 4
DRAWN BY: B.H.C.	DATE: DECEMBER, 2005	OF 35 SHEETS