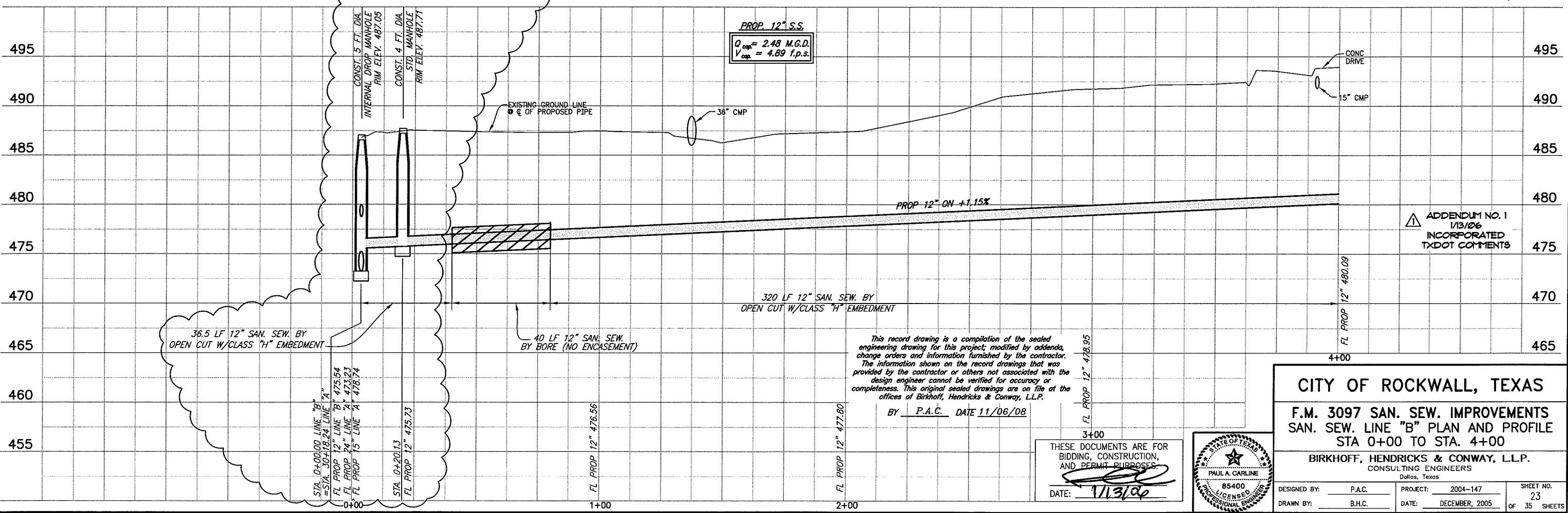
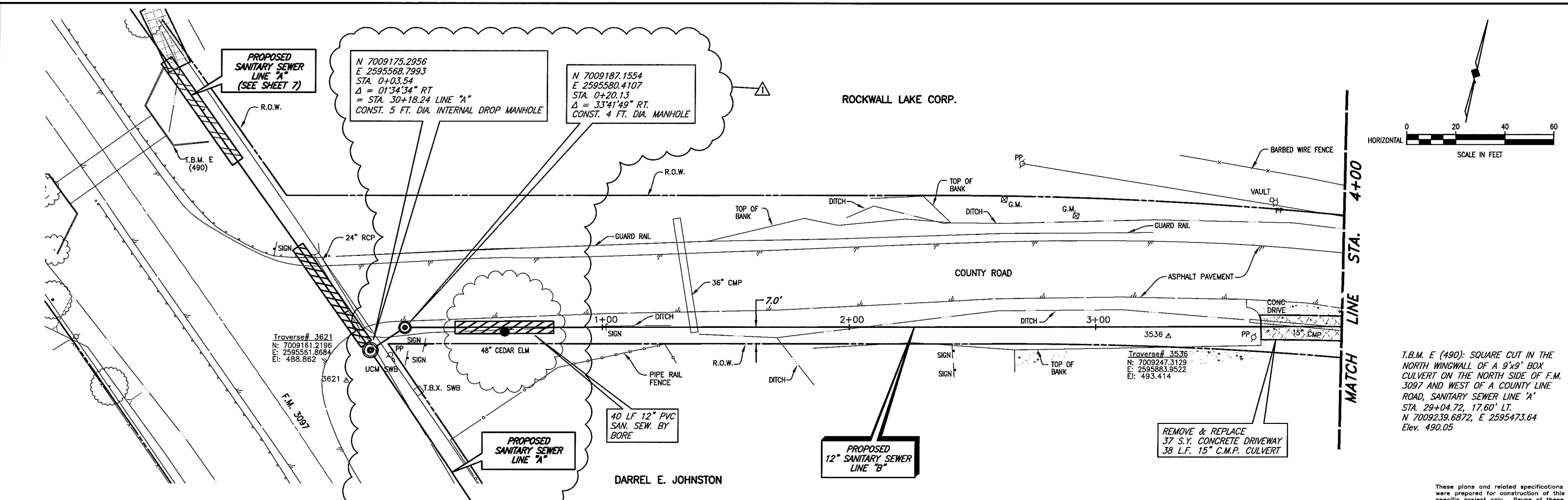


REVISIONS: 11/06/08 - AQUIVAREZ  
H:\Projects\Rockwall\2004\147\Line-B\Sheets\2004147.PP01.dwg  
PLOT SCALE: 1:40  
PLOT STYLE: 11x17D.ctb  
PLOTTED BY: AQUIVAREZ ON 11/06/2008



**CITY OF ROCKWALL, TEXAS**

**F.M. 3097 SAN. SEW. IMPROVEMENTS**

**SAN. SEW. LINE "B" PLAN AND PROFILE**

**STA 0+00 TO STA. 4+00**

**BIRKHOFF, HENDRICKS & CONWAY, L.L.P.**  
CONSULTING ENGINEERS  
Dallas, Texas

**DESIGNED BY:** P.A.C. **PROJECT:** 2004-147 **SHEET NO.:** 23  
**DRAWN BY:** B.H.C. **DATE:** DECEMBER, 2005 **OF 35 SHEETS**

THESE DOCUMENTS ARE FOR BIDDING, CONSTRUCTION, AND PERMIT PURPOSES. DATE: 1/13/06

This record drawing is a compilation of the sealed engineering drawing for this project, modified by addenda, change orders and information furnished by the contractor. The information shown on the record drawings that was provided by the contractor or others not associated with the design engineer cannot be verified for accuracy or completeness. This original sealed drawings are on file at the offices of Birkhoff, Hendricks & Conway, L.L.P.

BY: P.A.C. DATE 11/06/08

PAUL A. CARLINE  
85400  
LICENSED PROFESSIONAL ENGINEER  
STATE OF TEXAS