

PLOTTED BY: AQUARREZ ON 11/16/2008

PLOT STYLE: 11x17D.ctb

PLOT SCALE: 1:40

H:\Projects\Rockwall\2004\147\Line-D&E\Sheets\2004147-SS&E.dwg

REVISED: 11/15/07 - AQUARREZ

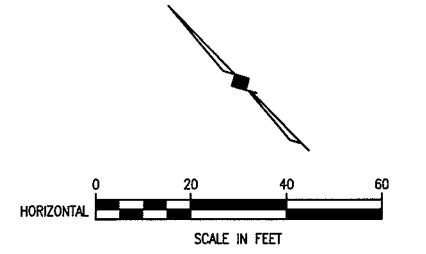
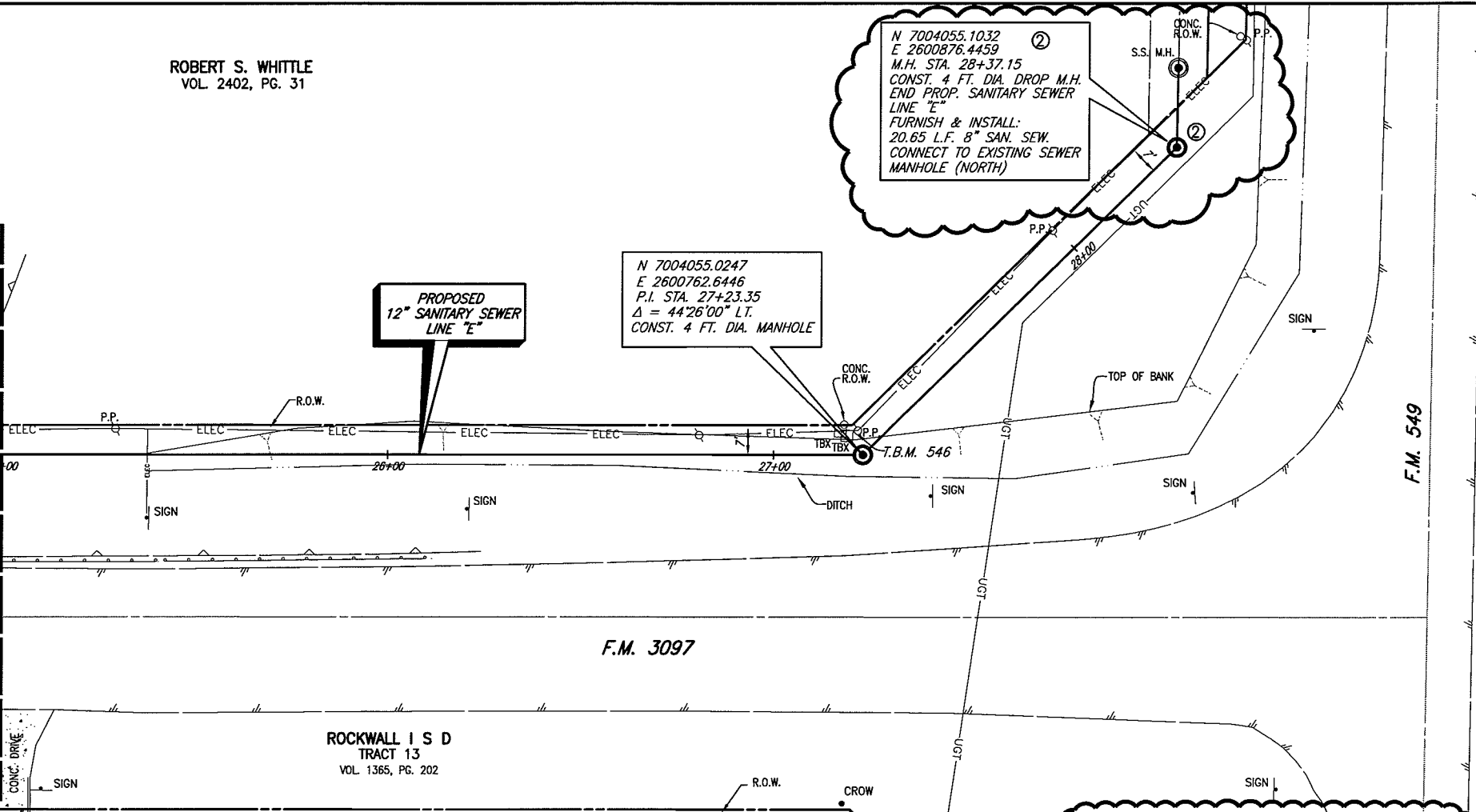
ROBERT S. WHITTLE
VOL. 2402, PG. 31

N 7004055.1032
E 2600876.4459
M.H. STA. 28+37.15
CONST. 4 FT. DIA. DROP M.H.
END PROP. SANITARY SEWER
LINE "E"
FURNISH & INSTALL:
20.65 L.F. 8" SAN. SEW.
CONNECT TO EXISTING SEWER
MANHOLE (NORTH)

N 7004055.0247
E 2600762.6446
P.I. STA. 27+23.35
 $\Delta = 44'26''00''$ LT.
CONST. 4 FT. DIA. MANHOLE

PROPOSED
12" SANITARY SEWER
LINE "E"

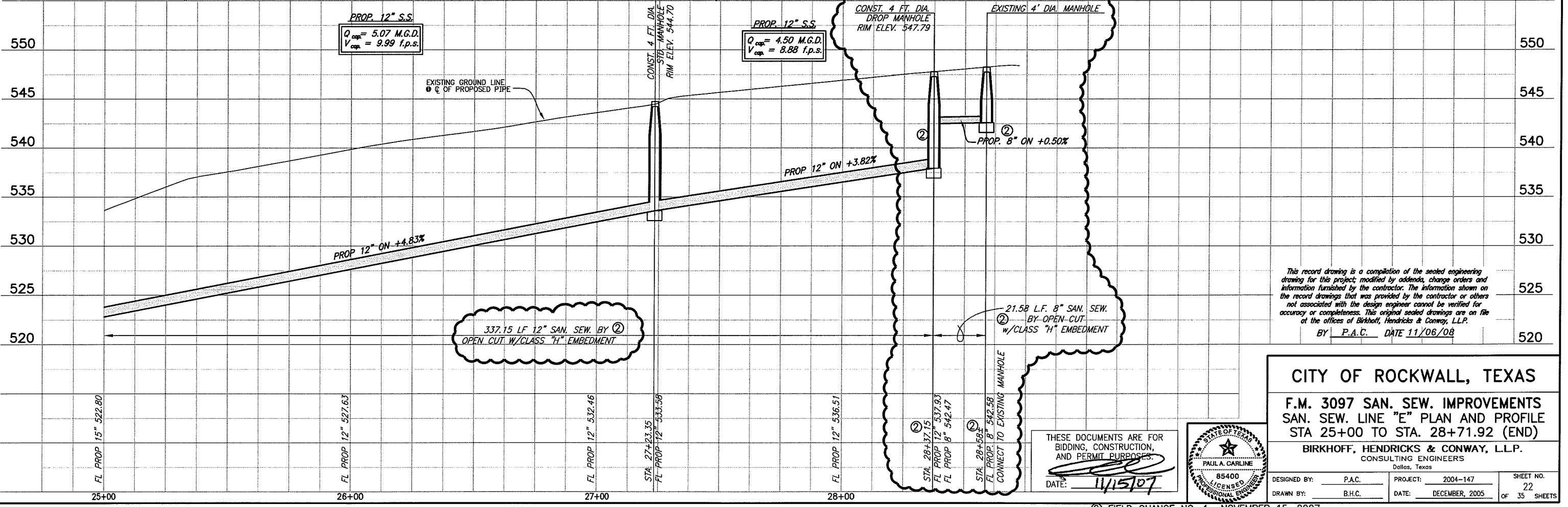
MATCH LINE STA. 25+00



CITY OF ROCKWALL BENCHMARK
R016
ELEV. 558.719

T.B.M. A (546): 60D NAIL IN
UTILITY POLE AT THE NORTHWEST
CORNER OF F.M. 3097 & F.M.
549, SANITARY SEWER LINE "E"
STA. 27+51.50, 5.47' LT.
N 7004060.2321,
E 2600765.149,
Elev. 545.62.

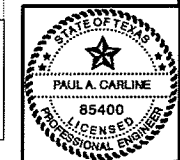
These plans and related specifications
were prepared for construction of this
specific project only. Reuse of these
documents is not permitted without
written authorization of Birkhoff,
Hendricks, & Conway, L.L.P.



This record drawing is a compilation of the sealed engineering
drawing for this project; modified by addenda, change orders and
information furnished by the contractor. The information shown on
the record drawings that was provided by the contractor or others
not associated with the design engineer cannot be verified for
accuracy or completeness. This original sealed drawings are on file
at the offices of Birkhoff, Hendricks & Conway, L.L.P.
BY P.A.C. DATE 11/06/08

CITY OF ROCKWALL, TEXAS
F.M. 3097 SAN. SEW. IMPROVEMENTS
SAN. SEW. LINE "E" PLAN AND PROFILE
STA 25+00 TO STA. 28+71.92 (END)

BIRKHOFF, HENDRICKS & CONWAY, L.L.P.
CONSULTING ENGINEERS
Dallas, Texas



THESE DOCUMENTS ARE FOR
BIDDING, CONSTRUCTION,
AND PERMIT PURPOSES.
DATE: 11/15/07

DESIGNED BY: P.A.C. PROJECT: 2004-147 SHEET NO. 22
DRAWN BY: B.H.C. DATE: DECEMBER, 2005 OF 35 SHEETS

FIELD CHANGE NO. 1 NOVEMBER 15, 2007