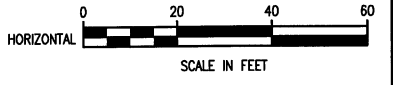
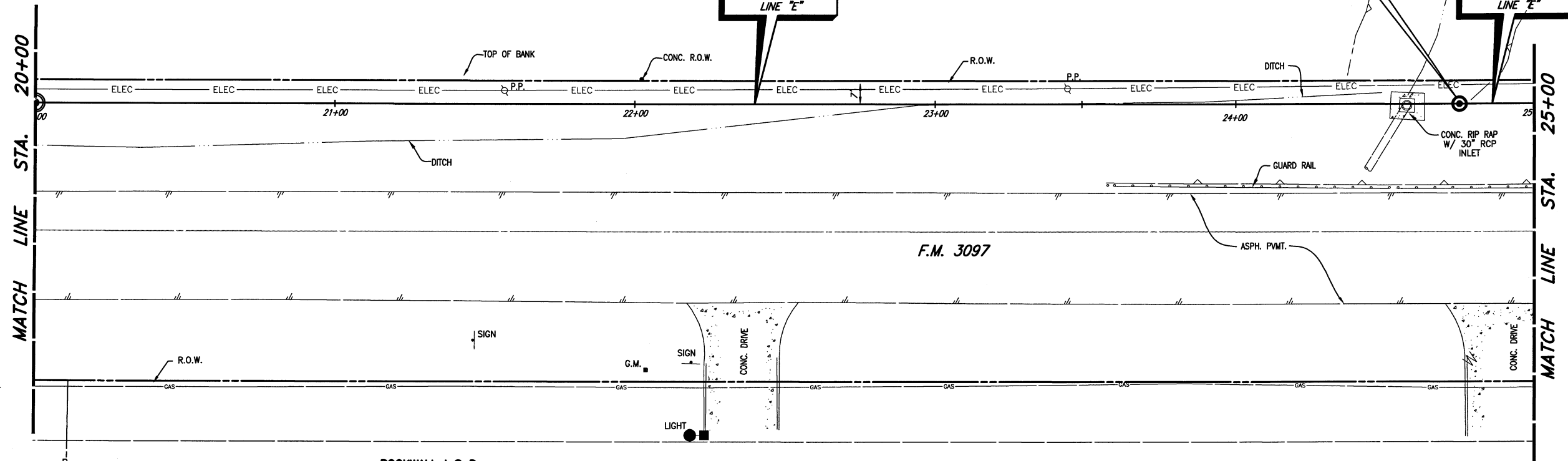


REVISED: 11/17/08 - JMBRALES  
 H:\Projects\Rockwall\2004147\Line-D&E\Sheets\2004147-SSSE.dwg  
 PLOT SCALE: 1:40  
 PLOT STYLE: 11x17D.ctb  
 PLOTTED BY: AQUIVAREZ ON 11/14/2008

ROBERT S. WHITTLE  
VOL. 2402, PG. 31



CITY OF ROCKWALL BENCHMARK  
RD16  
ELEV. 558.719

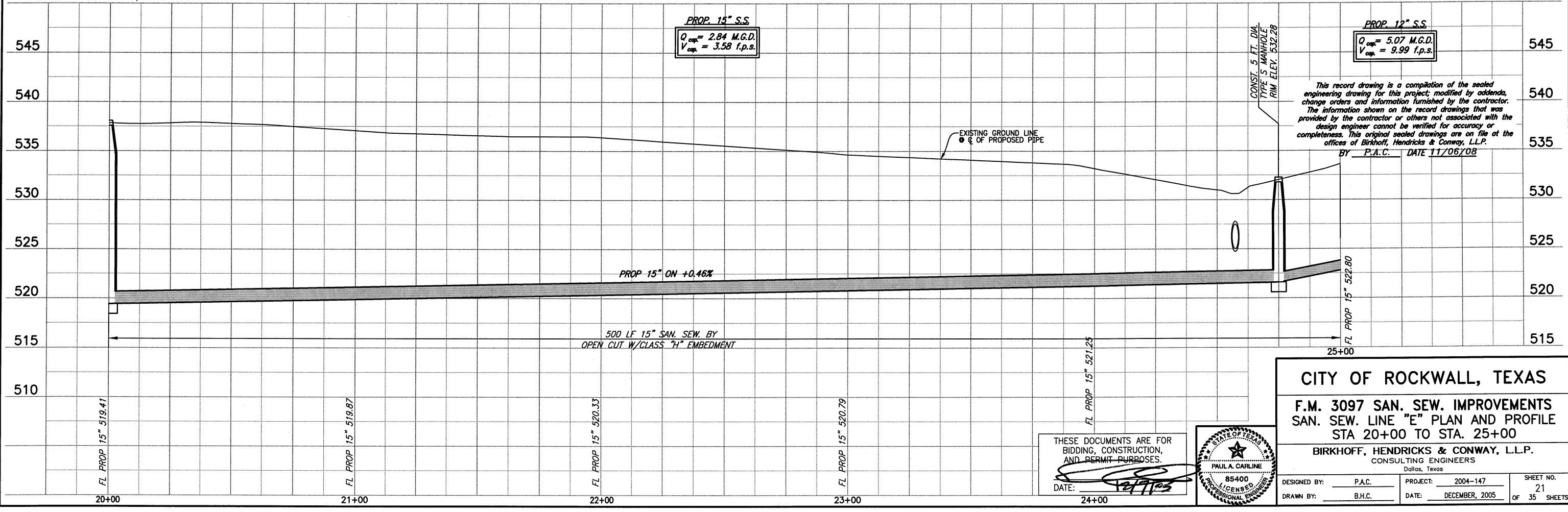
T.B.M. A (546): 60D NAIL IN UTILITY POLE AT THE NORTHWEST CORNER OF F.M. 3097 & F.M. 549, SANITARY SEWER LINE 'E', STA. 27+51.50, 5.47' LT. N 7004060.2321, E 2600765.149, Elev. 545.62.

These plans and related specifications were prepared for construction of this specific project only. Reuse of these documents is not permitted without written authorization of Birkhoff, Hendricks, & Conway, L.L.P.

ROCKWALL I S D  
TRACT 13  
VOL. 1365, PG. 202

PROP. 15" S.S.  
 $Q_{cap} = 2.84$  M.G.D.  
 $V_{cap} = 3.58$  f.p.s.

PROP. 12" S.S.  
 $Q_{cap} = 5.07$  M.G.D.  
 $V_{cap} = 9.99$  f.p.s.

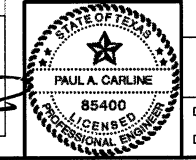


This record drawing is a compilation of the sealed engineering drawing for this project, modified by addenda, change orders and information furnished by the contractor. The information shown on the record drawings that was provided by the contractor or others not associated with the design engineer cannot be verified for accuracy or completeness. This original sealed drawings are on file at the offices of Birkhoff, Hendricks & Conway, L.L.P.  
BY P.A.C. DATE 11/06/08

CITY OF ROCKWALL, TEXAS  
F.M. 3097 SAN. SEW. IMPROVEMENTS  
SAN. SEW. LINE "E" PLAN AND PROFILE  
STA 20+00 TO STA. 25+00

BIRKHOFF, HENDRICKS & CONWAY, L.L.P.  
CONSULTING ENGINEERS  
Dallas, Texas

THESE DOCUMENTS ARE FOR BIDDING, CONSTRUCTION, AND PERMIT PURPOSES.  
DATE: 12/17/03



DESIGNED BY: P.A.C.	PROJECT: 2004-147	SHEET NO. 21
DRAWN BY: B.H.C.	DATE: DECEMBER, 2005	OF 35 SHEETS