

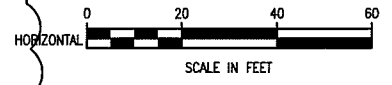
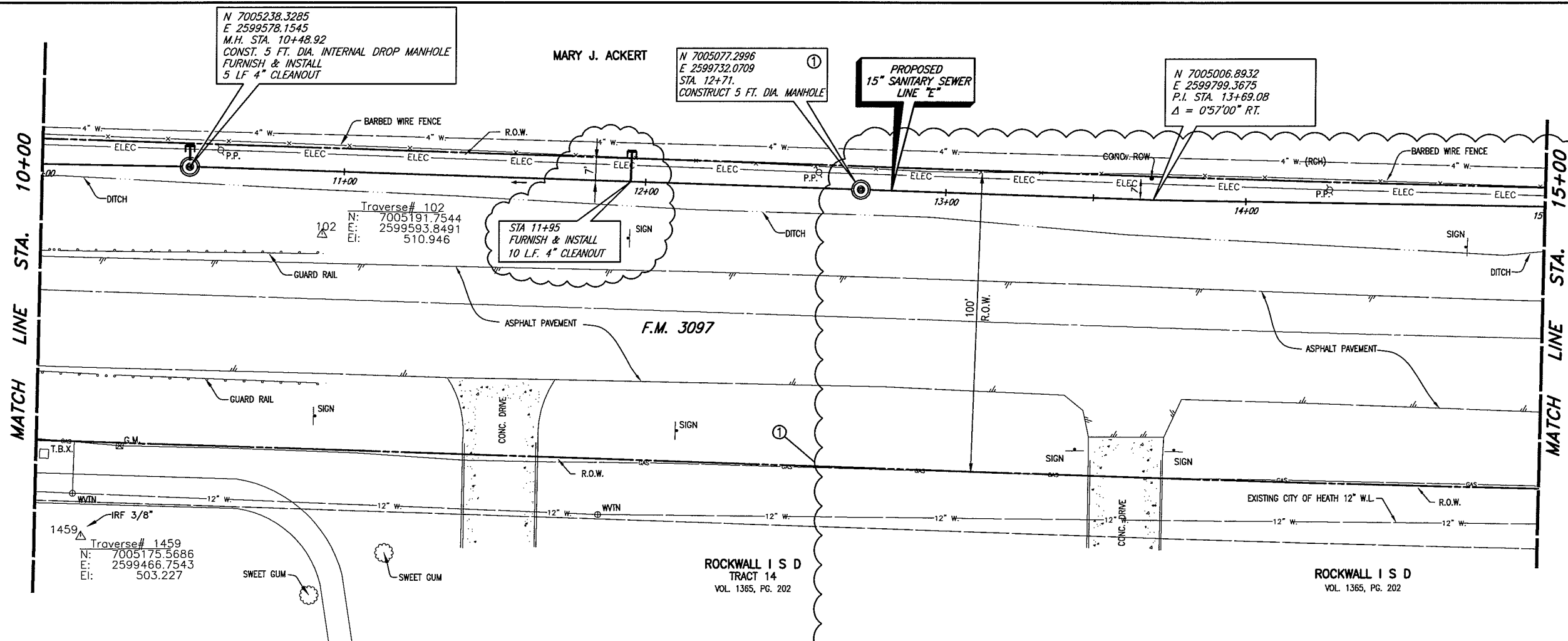
PLOTTED BY: AQUINAREZ ON 11/16/2008

PLOT STYLE: 11x17D.ctb

PLOT SCALE: 1:40

H:\Projects\Rockwall\2004147\Line-D&E\Sheets\2004147-SSSE.dwg

REVISED: 9/27/07 - MOLDHAM

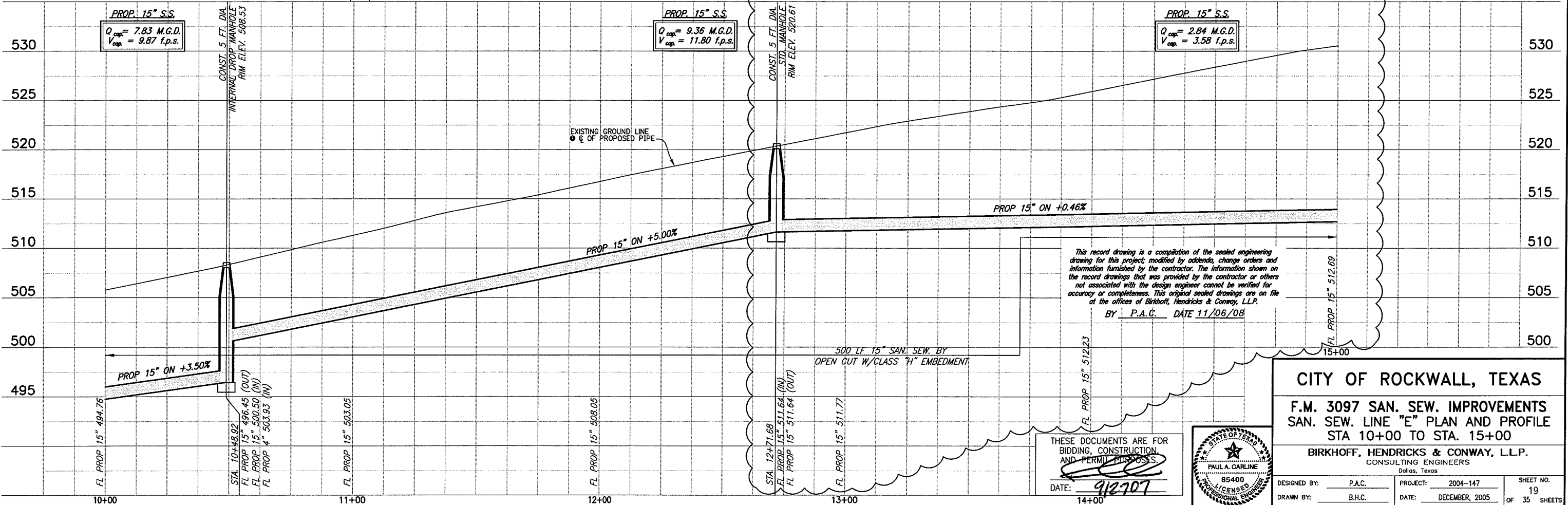


CITY OF ROCKWALL BENCHMARK
R016
ELEV. 558.719

T.B.M. A (546): 60D NAIL IN UTILITY
POLE AT THE NORTHWEST CORNER OF
F.M. 3097 & F.M. 549, SANITARY
SEWER LINE 'E'
STA. 27+51.50, 5.47' LT.
N 7004060.2321,
E 2600765.149,
Elev. 545.62.

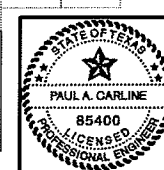
T.B.M. B (498): SQUARE CUT IN THE
SOUTH WINGWALL OF A 7'x8' BOX
CULVERT ON THE SOUTH SIDE OF F.M.
3097, SANITARY SEWER LINE 'E'
STA. 7+81.76, 67.55' RT.
N 7005381.3752,
E 2599342.613,
Elev. 497.82

These plans and related specifications
were prepared for construction of this
specific project only. Reuse of these
documents is not permitted without
written authorization of Birkhoff,
Hendricks, & Conway, L.L.P.



This record drawing is a compilation of the sealed engineering
drawing for this project, modified by addenda, change orders and
information furnished by the contractor. The information shown on
the record drawings that was provided by the contractor or others
not associated with the design engineer cannot be verified for
accuracy or completeness. This original sealed drawings are on file
at the offices of Birkhoff, Hendricks & Conway, L.L.P.
BY P.A.C. DATE 11/06/08

THESE DOCUMENTS ARE FOR
BIDDING, CONSTRUCTION,
AND PERMIT PURPOSES.
DATE: 9/27/07



CITY OF ROCKWALL, TEXAS

F.M. 3097 SAN. SEW. IMPROVEMENTS
SAN. SEW. LINE "E" PLAN AND PROFILE
STA 10+00 TO STA. 15+00

BIRKHOFF, HENDRICKS & CONWAY, L.L.P.
CONSULTING ENGINEERS
Dallas, Texas

DESIGNED BY: P.A.C. PROJECT: 2004-147 SHEET NO. 19
DRAWN BY: B.H.C. DATE: DECEMBER, 2005 OF 35 SHEETS

① FIELD CHANGE NO. 1 SEPTEMBER 27, 2007