

REVISION: 11/16/08 - ADLWAVEZ

PLOTTED BY: ADLWAVEZ ON 11/16/2008

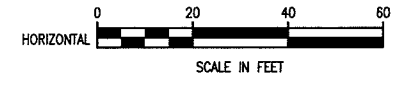
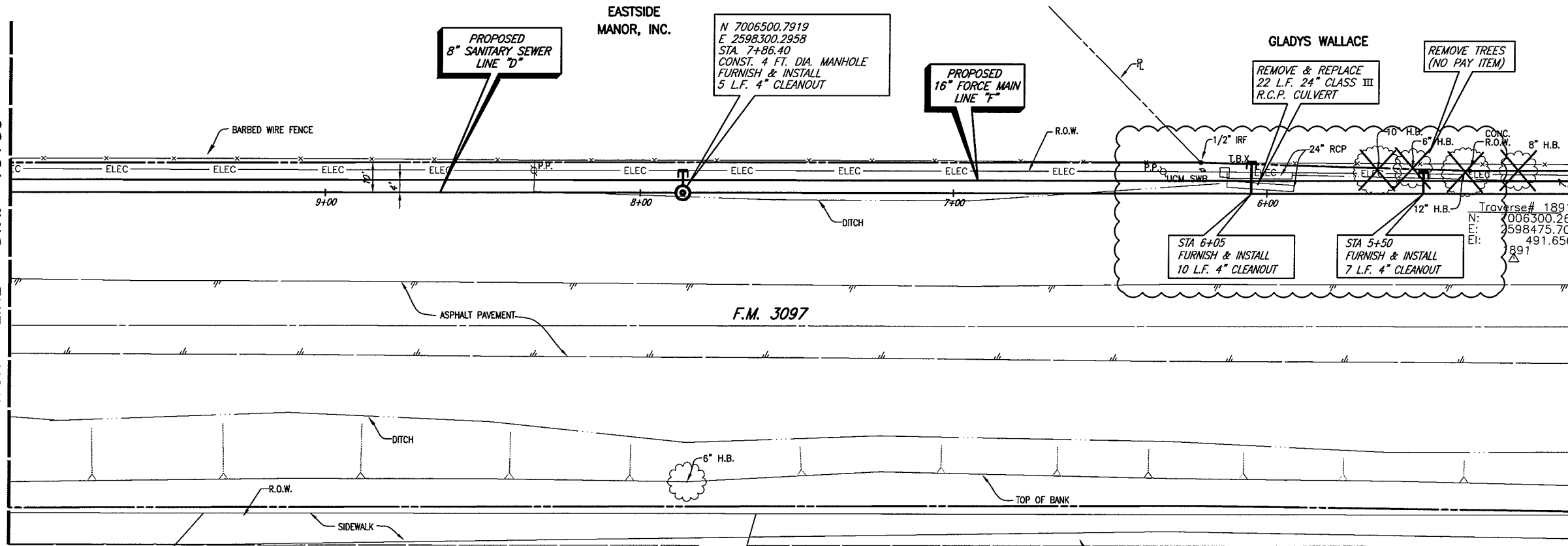
PLOT STYLE: 11x17.dwg

PROJECT: Rockwall (2004-147) Line-D&E Sheets (2004-147-SS2D.dwg)

REVISION: 11/16/08 - ADLWAVEZ

MATCH LINE STA. 10+00

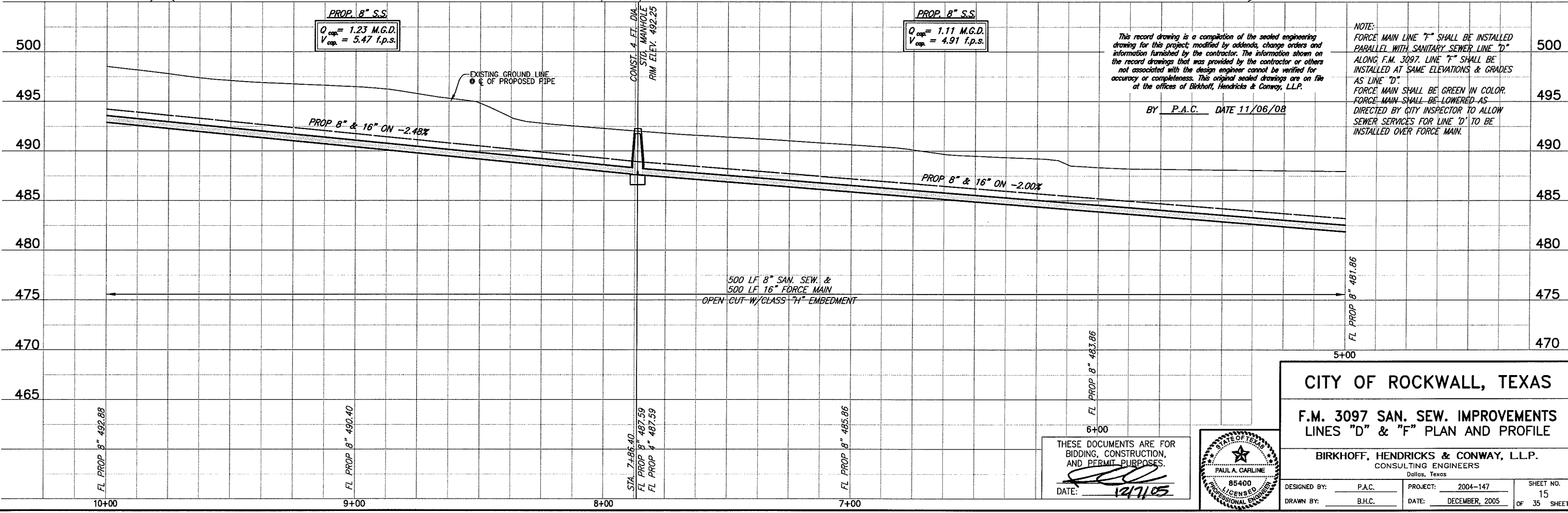
MATCH LINE STA. 5+00



CITY OF ROCKWALL BENCHMARK
 R016
 ELEV. 558.719

T.B.M. C (491): SQUARE CUT IN CENTER OF A NORTH HEADWALL ON THE NORTH SIDE OF F.M. 3097, SANITARY SEWER LINE 'D' & 'F' STA. 2+81.58, 19.14' LT. N 7006133.9468, E 2598647.6282, Elev. 491.13

These plans and related specifications were prepared for construction of this specific project only. Reuse of these documents is not permitted without written authorization of Birkhoff, Hendricks, & Conway, L.L.P.



This record drawing is a compilation of the sealed engineering drawing for this project, modified by addenda, change orders and information furnished by the contractor. The information shown on the record drawings that was provided by the contractor or others not associated with the design engineer cannot be verified for accuracy or completeness. This original sealed drawings are on file at the offices of Birkhoff, Hendricks & Conway, L.L.P.

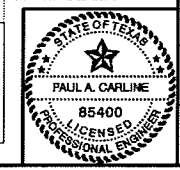
BY P.A.C. DATE 11/06/08

NOTE:
 FORCE MAIN LINE 'F' SHALL BE INSTALLED PARALLEL WITH SANITARY SEWER LINE 'D' ALONG F.M. 3097. LINE 'F' SHALL BE INSTALLED AT SAME ELEVATIONS & GRADES AS LINE 'D'.
 FORCE MAIN SHALL BE GREEN IN COLOR. FORCE MAIN SHALL BE LOWERED AS DIRECTED BY CITY INSPECTOR TO ALLOW SEWER SERVICES FOR LINE 'D' TO BE INSTALLED OVER FORCE MAIN.

CITY OF ROCKWALL, TEXAS
 F.M. 3097 SAN. SEW. IMPROVEMENTS LINES 'D' & 'F' PLAN AND PROFILE

BIRKHOFF, HENDRICKS & CONWAY, L.L.P.
 CONSULTING ENGINEERS
 Dallas, Texas

THESE DOCUMENTS ARE FOR BIDDING, CONSTRUCTION, AND PERMIT PURPOSES.
 DATE: 12/7/05



DESIGNED BY: P.A.C. PROJECT: 2004-147 SHEET NO. 15
 DRAWN BY: B.H.C. DATE: DECEMBER, 2005 OF 35 SHEETS