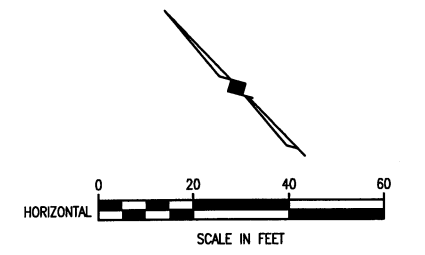
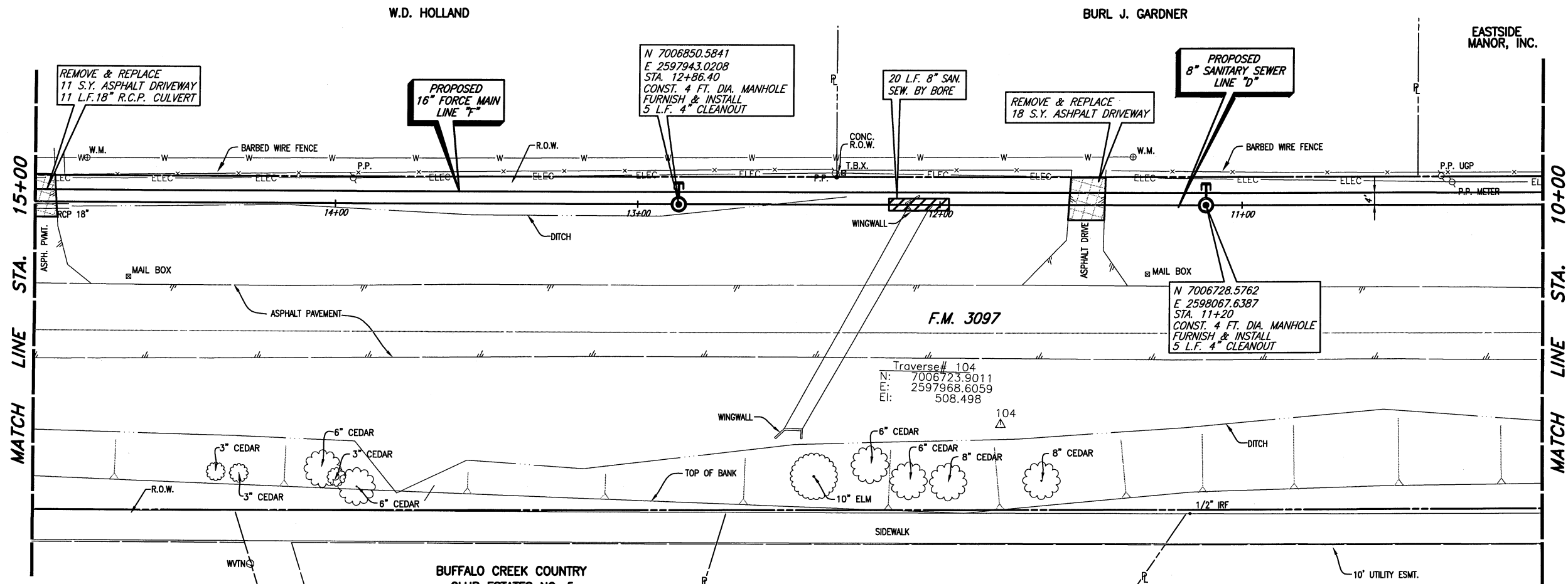


REVISED: 11/14/08 - AQUILARZ  
 PLOT SCALE: 1:40  
 PLOT STYLE: 11x17D.ctb  
 PLOTTED BY: AQUILARZ ON 11/14/2008  
 H:\Projects\Rockwall\2004147\Line-D&E\Sheets\2004147-SS3D.dwg

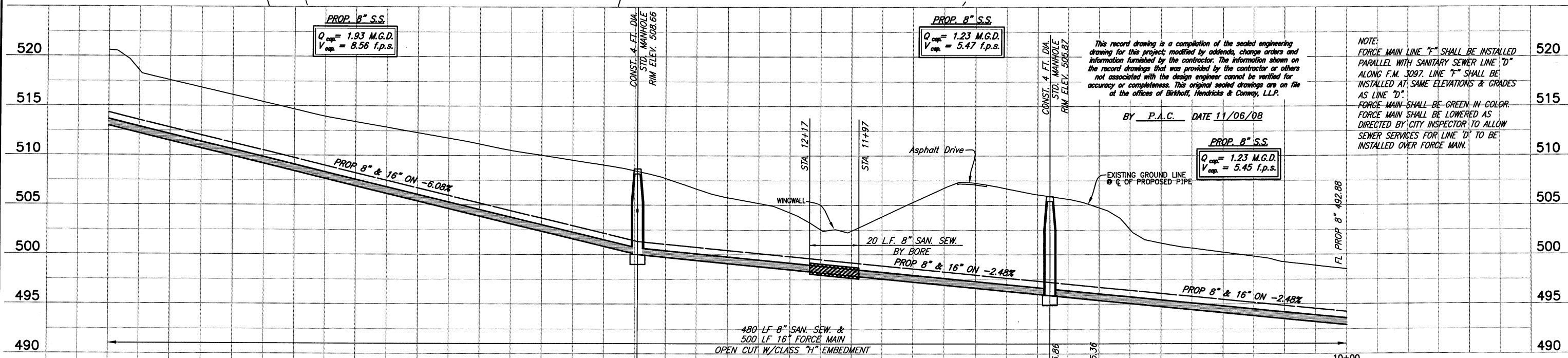


CITY OF ROCKWALL BENCHMARK  
 R016  
 ELEV. 558.719

T.B.M. D (537): 60D SET IN  
 UTILITY POLE ON THE NORTH  
 SIDE OF F.M. 3097, SANITARY  
 SEWER LINE "D"  
 STA. 19+03.59, 6.44' RT.  
 N 7007286.9595,  
 E 2597506.5131  
 Elev. 536.74

T.B.M. C (491): SQUARE CUT IN  
 CENTER OF A NORTH HEADWALL ON  
 THE NORTH SIDE OF F.M. 3097,  
 SANITARY SEWER LINE "D" & "F"  
 STA. 2+81.58, 19.14' LT.  
 N 7006133.9468,  
 E 2598647.6282,  
 Elev. 491.13

These plans and related specifications  
 were prepared for construction of this  
 specific project only. Reuse of these  
 documents is not permitted without  
 written authorization of Birkhoff,  
 Hendricks, & Conway, L.L.P.



This record drawing is a compilation of the sealed engineering drawing for this project, modified by addenda, change orders and information furnished by the contractor. The information shown on the record drawings that was provided by the contractor or others not associated with the design engineer cannot be verified for accuracy or completeness. This original sealed drawings are on file at the offices of Birkhoff, Hendricks & Conway, L.L.P.

BY P.A.C. DATE 11/06/08

NOTE:  
 FORCE MAIN LINE "F" SHALL BE INSTALLED PARALLEL WITH SANITARY SEWER LINE "D" ALONG F.M. 3097. LINE "F" SHALL BE INSTALLED AT SAME ELEVATIONS & GRADES AS LINE "D".  
 FORCE MAIN SHALL BE GREEN IN COLOR. FORCE MAIN SHALL BE LOWERED AS DIRECTED BY CITY INSPECTOR TO ALLOW SEWER SERVICES FOR LINE "D" TO BE INSTALLED OVER FORCE MAIN.

CITY OF ROCKWALL, TEXAS

F.M. 3097 SAN. SEW. IMPROVEMENTS  
 LINES "D" & "F" PLAN AND PROFILE

BIRKHOFF, HENDRICKS & CONWAY, L.L.P.  
 CONSULTING ENGINEERS  
 Dallas, Texas

DESIGNED BY: P.A.C. PROJECT: 2004-147 SHEET NO. 14  
 DRAWN BY: B.H.C. DATE: DECEMBER, 2005 OF 35 SHEETS

STATE OF TEXAS  
 PAUL A. CARLINE  
 85400  
 LICENSED PROFESSIONAL ENGINEER

THESE DOCUMENTS ARE FOR  
 BIDDING, CONSTRUCTION,  
 AND PERMIT PURPOSES  
 DATE: 12/7/05