

REVISED: 11/16/08 - ADUWAZ

REVISIONS: 11/16/08 - ADUWAZ

PROJECT: 2004-147

DATE: 11/16/08

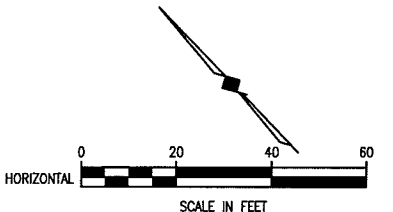
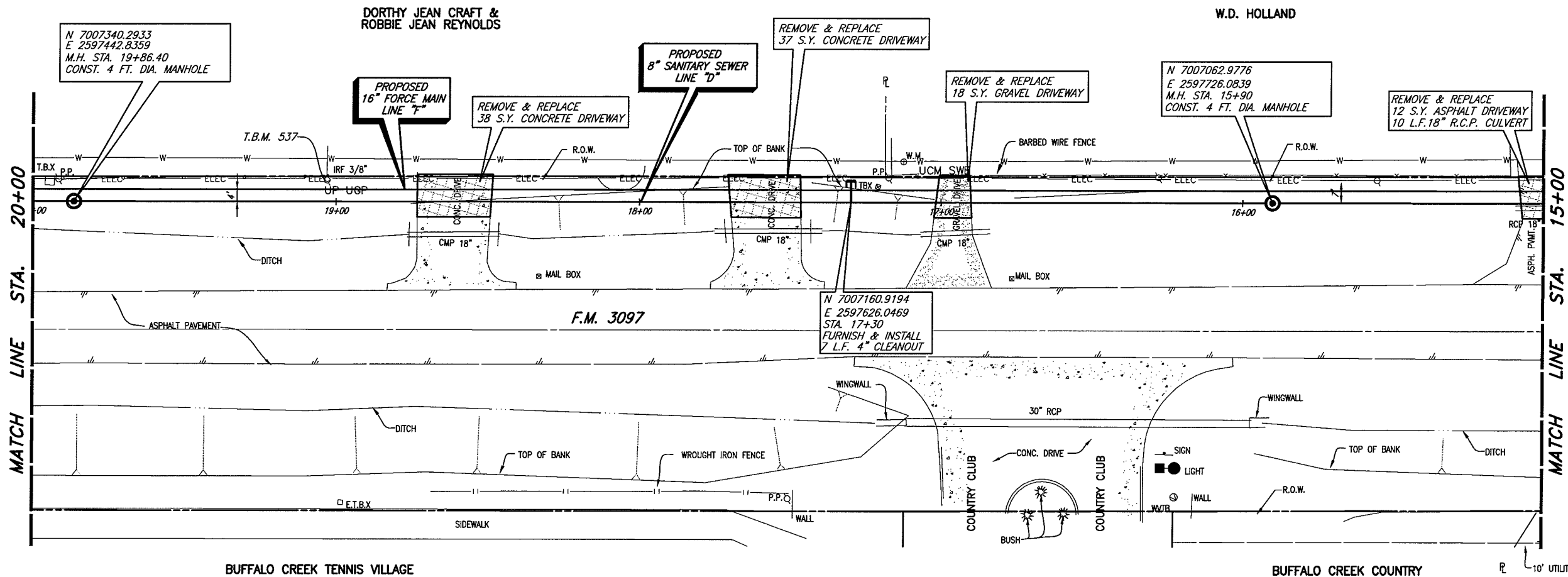
BY: P.A.C. DATE 11/06/08

DATE: 12/11/08

DATE: DECEMBER, 2005

DATE: DECEMBER, 2005

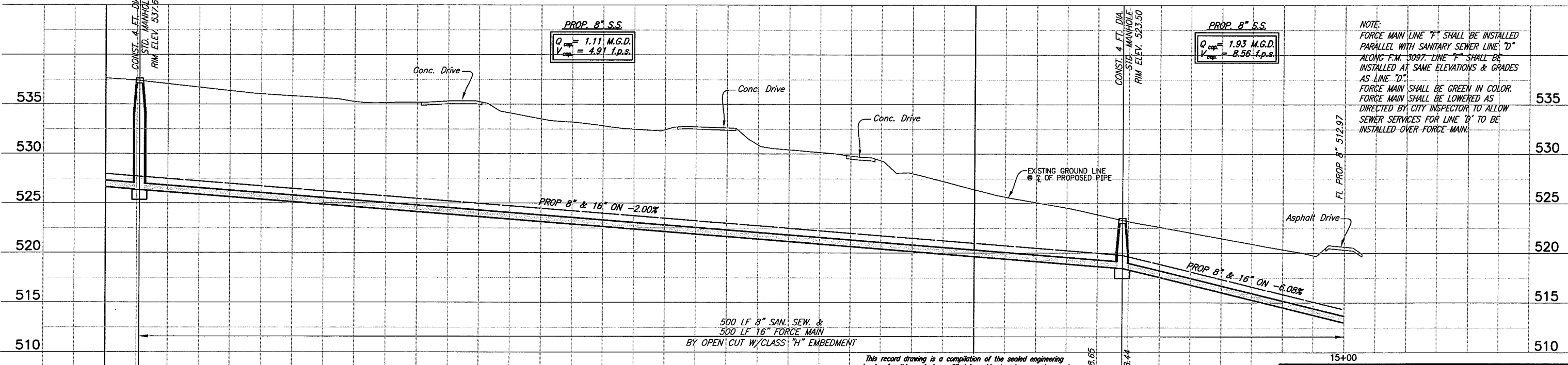
DATE: DECEMBER, 2005



CITY OF ROCKWALL BENCHMARK
R016
ELEV. 558.719

T.B.M. D (537): 60D SET IN
UTILITY POLE ON THE NORTH
SIDE OF F.M. 3097, SANITARY
SEWER LINE 'D'
STA. 19+03.59, 6.44' RT.
N 7007286.9595,
E 2597506.5131
Elev. 536.74

These plans and related specifications
were prepared for construction of this
specific project only. Reuse of these
documents is not permitted without
written authorization of Birkhoff,
Hendricks, & Conway, L.L.P.



NOTE:
FORCE MAIN LINE "F" SHALL BE INSTALLED
PARALLEL WITH SANITARY SEWER LINE "D"
ALONG F.M. 3097. LINE "F" SHALL BE
INSTALLED AT SAME ELEVATIONS & GRADES
AS LINE "D".
FORCE MAIN SHALL BE GREEN IN COLOR.
FORCE MAIN SHALL BE LOWERED AS
DIRECTED BY CITY INSPECTOR TO ALLOW
SEWER SERVICES FOR LINE "D" TO BE
INSTALLED OVER FORCE MAIN.

This record drawing is a compilation of the sealed engineering
drawing for this project; modified by addenda, change orders and
information furnished by the contractor. The information shown on
the record drawings that was provided by the contractor or others
not associated with the design engineer cannot be verified for
accuracy or completeness. This original sealed drawings are on file
at the offices of Birkhoff, Hendricks & Conway, L.L.P.

CITY OF ROCKWALL, TEXAS

**F.M. 3097 SAN. SEW. IMPROVEMENTS
LINES "D" & "F" PLAN AND PROFILE**

BIRKHOFF, HENDRICKS & CONWAY, L.L.P.
CONSULTING ENGINEERS
Dallas, Texas

DESIGNED BY: P.A.C. PROJECT: 2004-147 SHEET NO. 13
DRAWN BY: B.H.C. DATE: DECEMBER, 2005 OF 35 SHEETS



THESE DOCUMENTS ARE FOR
BIDDING, CONSTRUCTION,
AND PERMIT PURPOSES.