

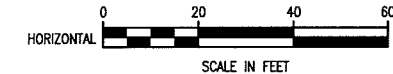
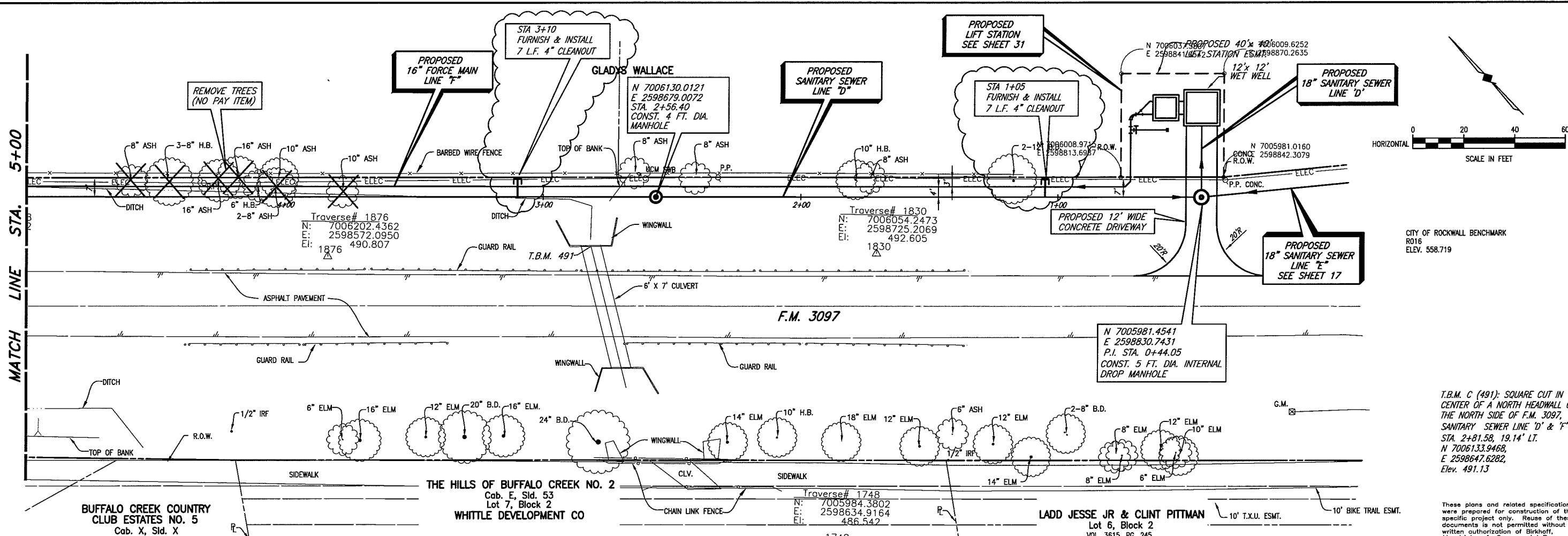
PLOTTED BY: AQUIVAREZ ON 11/6/2008

PLOT STYLE: 11x17D.ctb

SCALE: 1:40

H:\Projects\Rockwall\2004147\Line-D&E\Sheets\2004147-SS1D.dwg

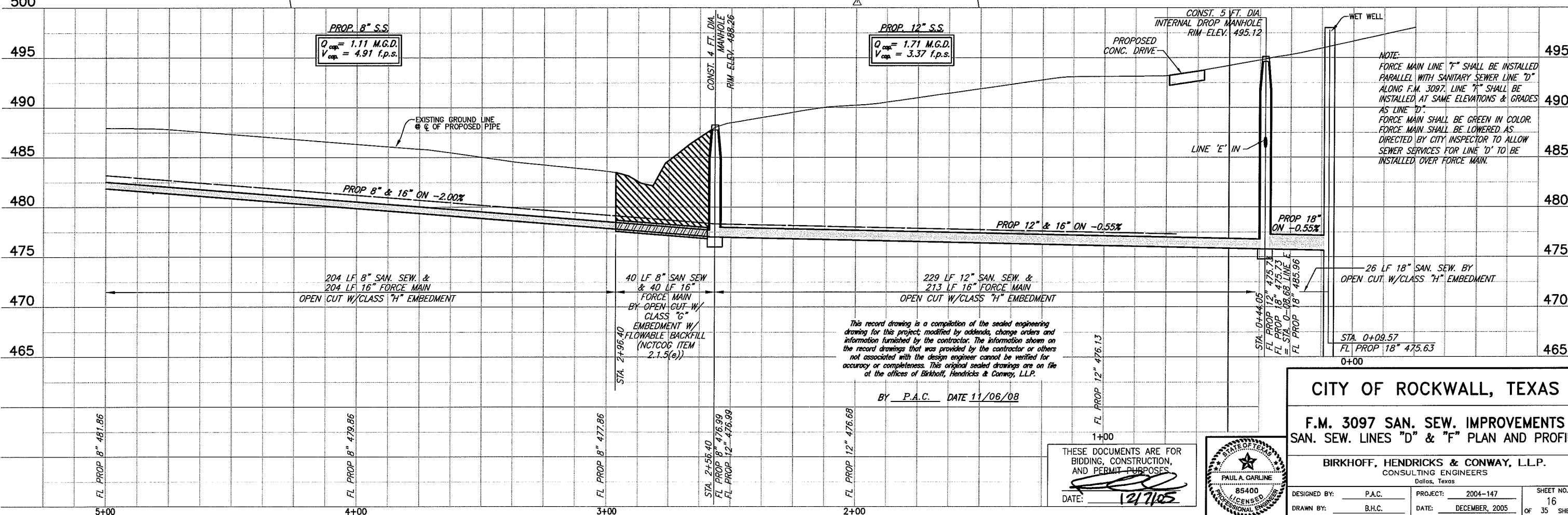
REVISED: 11/6/08 - AQUIVAREZ



CITY OF ROCKWALL BENCHMARK
R016
ELEV. 558.719

T.B.M. C (491): SQUARE CUT IN CENTER OF A NORTH HEADWALL ON THE NORTH SIDE OF F.M. 3097, SANITARY SEWER LINE 'D' & 'F' STA. 2+81.58, 19.14' LT. N 7006133.9468, E 2598647.6282, Elev. 491.13

These plans and related specifications were prepared for construction of this specific project only. Reuse of these documents is not permitted without written authorization of Birkhoff, Hendricks, & Conway, L.L.P.

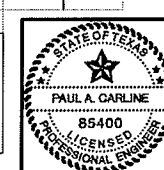


NOTE:
FORCE MAIN LINE "F" SHALL BE INSTALLED PARALLEL WITH SANITARY SEWER LINE "D" ALONG F.M. 3097. LINE "F" SHALL BE INSTALLED AT SAME ELEVATIONS & GRADES AS LINE "D".
FORCE MAIN SHALL BE GREEN IN COLOR. FORCE MAIN SHALL BE LOWERED AS DIRECTED BY CITY INSPECTOR TO ALLOW SEWER SERVICES FOR LINE "D" TO BE INSTALLED OVER FORCE MAIN.

This record drawing is a compilation of the sealed engineering drawing for this project, modified by addenda, change orders and information furnished by the contractor. The information shown on the record drawings that was provided by the contractor or others not associated with the design engineer cannot be verified for accuracy or completeness. This original sealed drawings are on file at the offices of Birkhoff, Hendricks & Conway, L.L.P.

BY P.A.C. DATE 11/06/08

THESE DOCUMENTS ARE FOR BIDDING, CONSTRUCTION, AND PERMIT PURPOSES.
DATE: 12/7/05



CITY OF ROCKWALL, TEXAS

F.M. 3097 SAN. SEW. IMPROVEMENTS
SAN. SEW. LINES "D" & "F" PLAN AND PROFILE

BIRKHOFF, HENDRICKS & CONWAY, L.L.P.
CONSULTING ENGINEERS
Dallas, Texas

DESIGNED BY: P.A.C. PROJECT: 2004-147 SHEET NO. 16
DRAWN BY: B.H.C. DATE: DECEMBER, 2005 OF 35 SHEETS