

NOTES:

- SEE CROSS-SECTIONS FOR ADDITIONAL DRIVEWAY AND SIDEWALK GRADES.
- COORDINATE MAILBOX RELOCATIONS WITH ROCKWALL POSTMASTER.

LEGEND

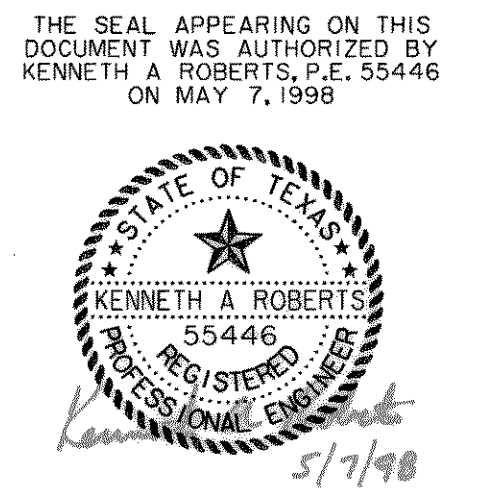
| | |
|-------------------------------|---|
| WATER | TELEPHONE |
| W - EXISTING WATER | UGT - EX. UNDERGROUND TELEPHONE |
| FH - FIRE HYDRANT | OHE&T - EX. OVERHEAD ELECTRIC & TELEPHONE |
| WM - METER | |
| T - WATER VALVE | GAS |
| | G - EXISTING GAS |
| WASTEWATER | PAVING |
| WW - EXISTING WASTEWATER | REMOVE EXISTING CONCRETE SIDEWALK |
| WMH - WASTEWATER MANHOLE | REMOVE EXISTING CONCRETE PAVEMENT |
| CO - CLEANOUT | PROPOSED CURB |
| | EXISTING R.O.W. |
| ELECTRIC | PROPOSED TOP OF CURB |
| OHE - EX. OVERHEAD ELECTRIC | PROPOSED TOP OF GUTTER |
| EX. 1/2" ELEC. CONDUIT | PROPOSED TOP OF PAVEMENT |
| PROP. 2" ELEC. CONDUIT | |
| EX. STREET LIGHT BASE | |
| PP - POWER POLE & GUY WIRE | |
| PS - TRAFFIC SIGNAL PULLBOX | |
| TP - TRAFFIC SIGNAL POLE | |
| STORMWATER | MISCELLANEOUS |
| 24" RCP - EXISTING STORMWATER | EXISTING TREE OR SHRUB |
| PROPOSED STORMWATER | MAILBOX |

BENCHMARKS:

BM #1 CITY OF ROCKWALL BRASS MONUMENT #5, @ MEDIAN SUMMIT RIDGE ROAD AND 75'± WEST OF @ RIDGE ROAD. ELEVATION 578.74

BM #2 'C' CUT WITH 'X' IN CENTER ON NORTH TOP OF CURB BOURN STREET AT APPROXIMATE @ SOUTH DAVY CROCKETT. ELEVATION 556.64

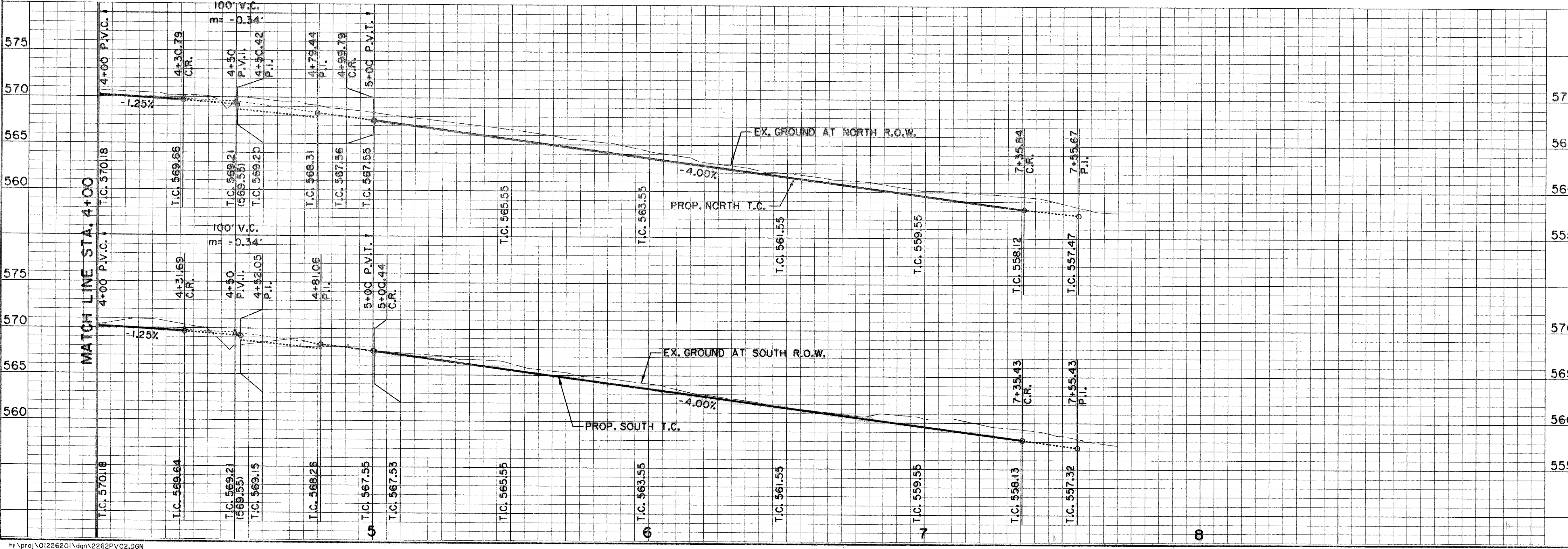
RECORD DRAWINGS FEBRUARY 5, 1999
THIS RECORD DOCUMENT HAS BEEN PREPARED BASED IN PART UPON INFORMATION FURNISHED BY OTHERS. THE DESIGN PROFESSIONAL CANNOT ASSURE THE ACCURACY OF OTHERS' INFORMATION AND THIS IS NOT RESPONSIBLE FOR THE ACCURACY OF THIS RECORD DOCUMENT OR FOR ANY ERROR OR OMISSION THAT MAY HAVE BEEN INCORPORATED INTO IT AS A RESULT. THOSE RELYING ON THIS RECORD DOCUMENT ARE ADVISED TO OBTAIN INDEPENDENT VERIFICATION OF ITS ACCURACY BEFORE APPLYING IT FOR ANY PURPOSE.



RECORD DRAWING 2/5/99

ADDENDUM #2, 5/28/98

| | | | | | | |
|---|-------|-------|---------------------|--------|-------------|-----|
| PAVING PLAN & PROFILE | | | | | | |
| STA. 4+00 TO DAVY CROCKETT | | | | | | |
| EMMA JANE STREET | | | | | | |
| SOUTH GOLIAD TO DAVY CROCKETT | | | | | | |
| CITY OF ROCKWALL, TEXAS | | | | | | |
| Huiitt-Zollers, Inc./Consulting Engineers | | | | | | |
| Dallas, Fort Worth, Houston, Phoenix, Austin, El Paso, Ontario, Albuquerque | | | | | | |
| DESIGN | DRAWN | APPR. | SCALE | DATE | PROJECT NO. | NO. |
| HZ1 | HZ1 | KAR | H:1"=20' V:1"=6' | MAY 98 | 01226201 | P-2 |



PL 22626201-1-30-31-50-55-60-65
 U 22626201-1-30-31-50-55-60-65
 B 22626201-1-30-31-50-55-60-65
 C 22626201-1-30-31-50-55-60-65