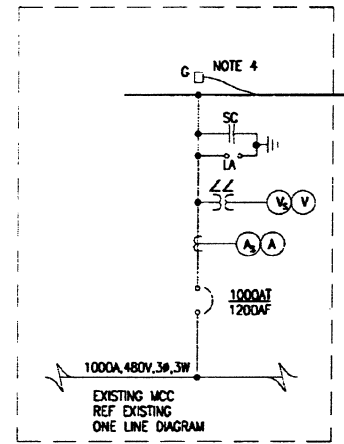
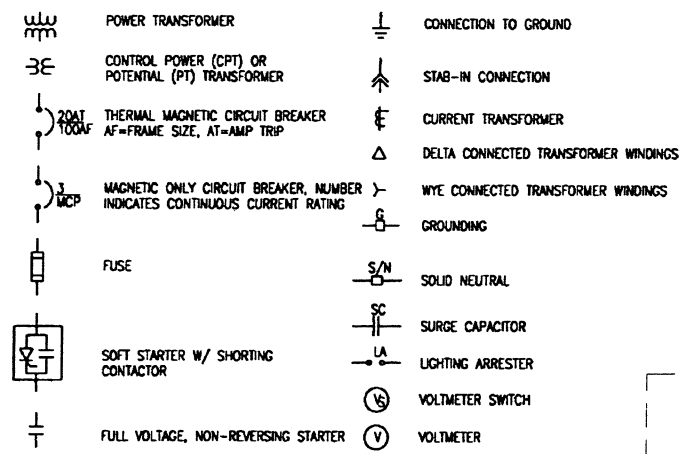
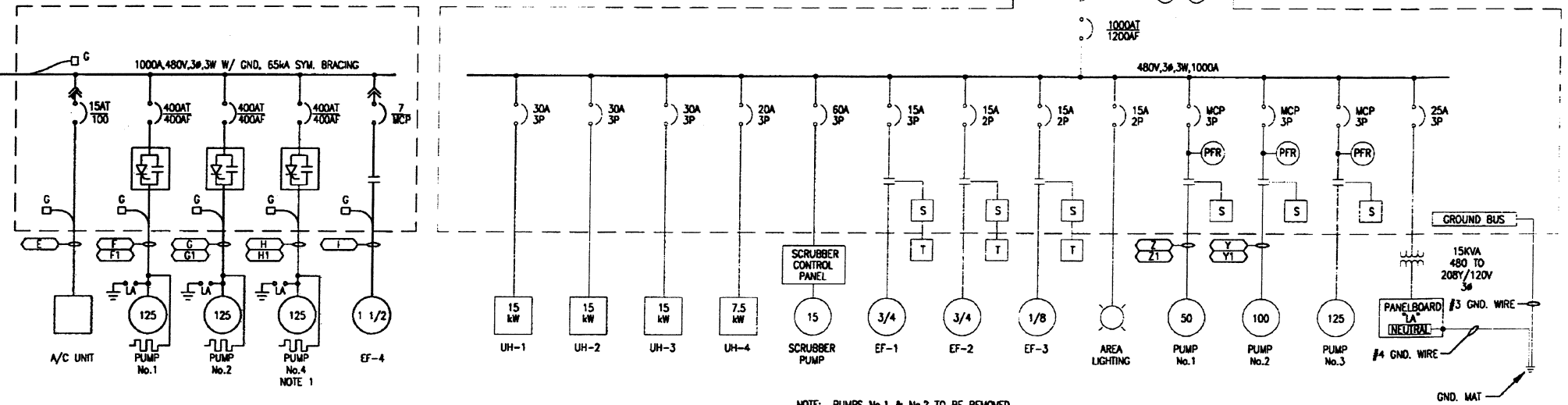


- NOTES:
1. PUMP NO. 4 IS ALTERNATE
 2. 500KW, 0.8 PF, 480-V-3#-4W Y. DO NOT GROUND GEN. NEUTRAL AT GENERATOR.
 3. A.T.S. SHALL BE SERVICE ENTRANCE RATED AND HAVE 65KA SYM WITHSTAND AND INTERRUPTING RATING. LOCATE EXISTING G.E.C. AND CONNECT THERETO.
 4. PROVIDE A SIGN AT SERVICE ENTRANCE PANEL INDICATING THE LOCATION OF BOTH SOURCES OF POWER.

REVISED ONE LINE DIAGRAM LEGEND



REVISED ONE LINE DIAGRAM



NOTE: PUMPS No.1 & No.2 TO BE REMOVED.

EXISTING ONE LINE DIAGRAM

SECTION 1	SECTION 2	SECTION 3	SECTION 4
1000A ATVS ATS	A/C	EF-4	SPACE
	SPACE	SPACE	SPACE
	RVSS P-1	RVSS P-2	RVSS P-4 (ALT.)

NEW 480V MCC No.2

SECTION 1	SECTION 2	SECTION 3	SECTION 4	SECTION 5
UH-1	UH-2	EF-1 SPACE	EF-2 SPACE	EF-3
UH-3	UH-4	SPACE	SPACE	SPACE
XFMR PHIL "LA"	LTG		3	
SCRUBBER PUMP LOUV-L1		1	2	
SPACE				
SPACE				

EXISTING 480V MCC No.1

This record drawing is a compilation of the sealed engineering drawing for this project; modified by addenda, change orders and information furnished by the contractor. The information shown on the record drawings that was provided by the contractor or others not associated with the design engineer cannot be verified for accuracy or completeness. This original sealed drawings are on file at the offices of Birchhoff, Hendricks & Conway, L.L.P.
 BY G.C.H. DATE 05/06/09

These plans and related specifications were prepared for construction of this specific project only. Reuse of these documents is not permitted without written authorization of Shimek, Jacobs & Finklea.

John A. Fry
4-8-99



CITY OF ROCKWALL, TEXAS

**EASTSIDE PUMP STATION
ONE LINE DIAGRAMS**

SHIMEK, JACOBS & FINKLEA, L.L.P.
CONSULTING ENGINEERS
Dallas, Texas

DESIGNED BY: J. A. FRY	PROJECT: 98 192	SHEET NO. 7
DRAWN BY: R. E. BRADY	DATE: APRIL 1999	OF 12 SHEETS