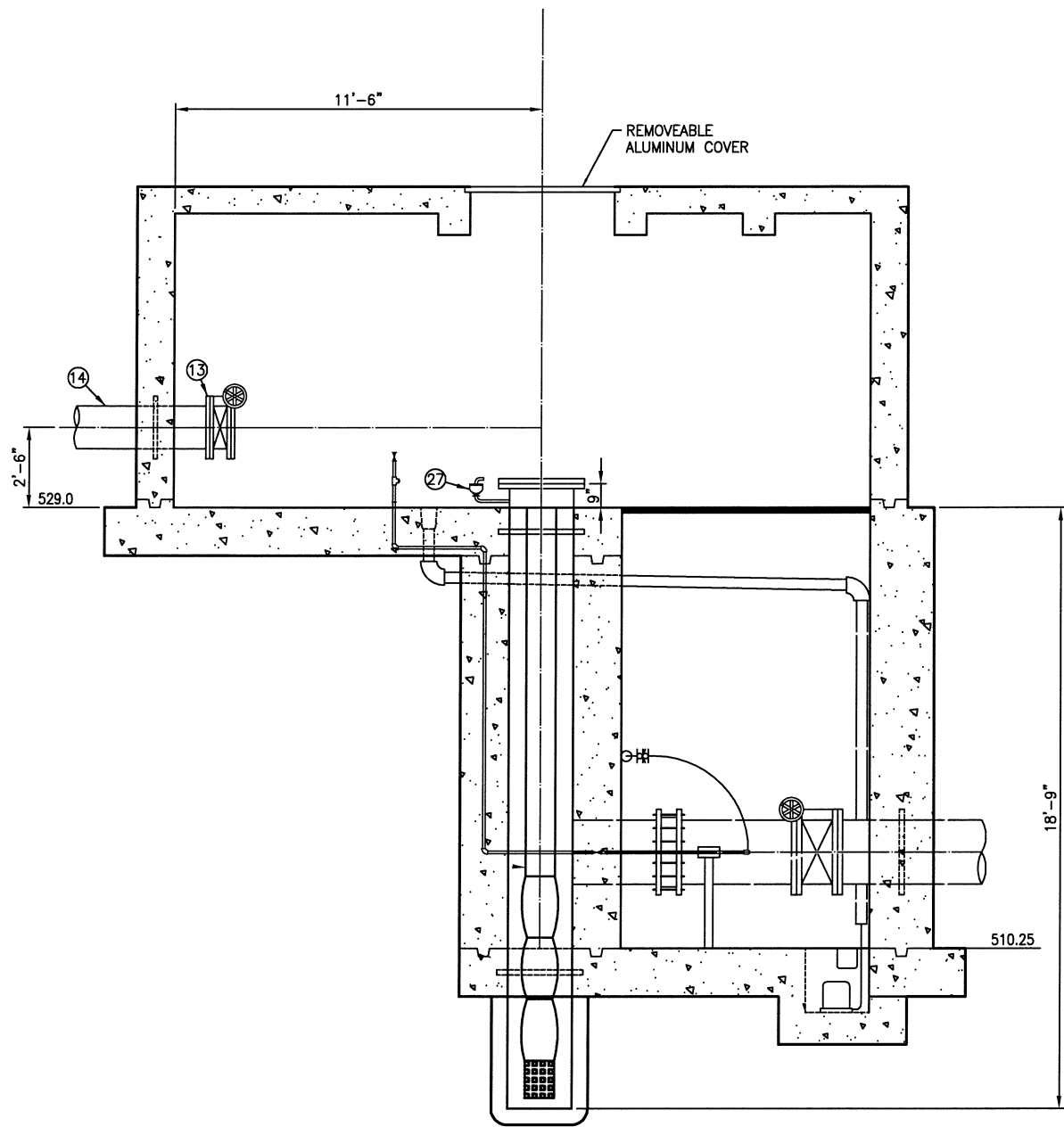
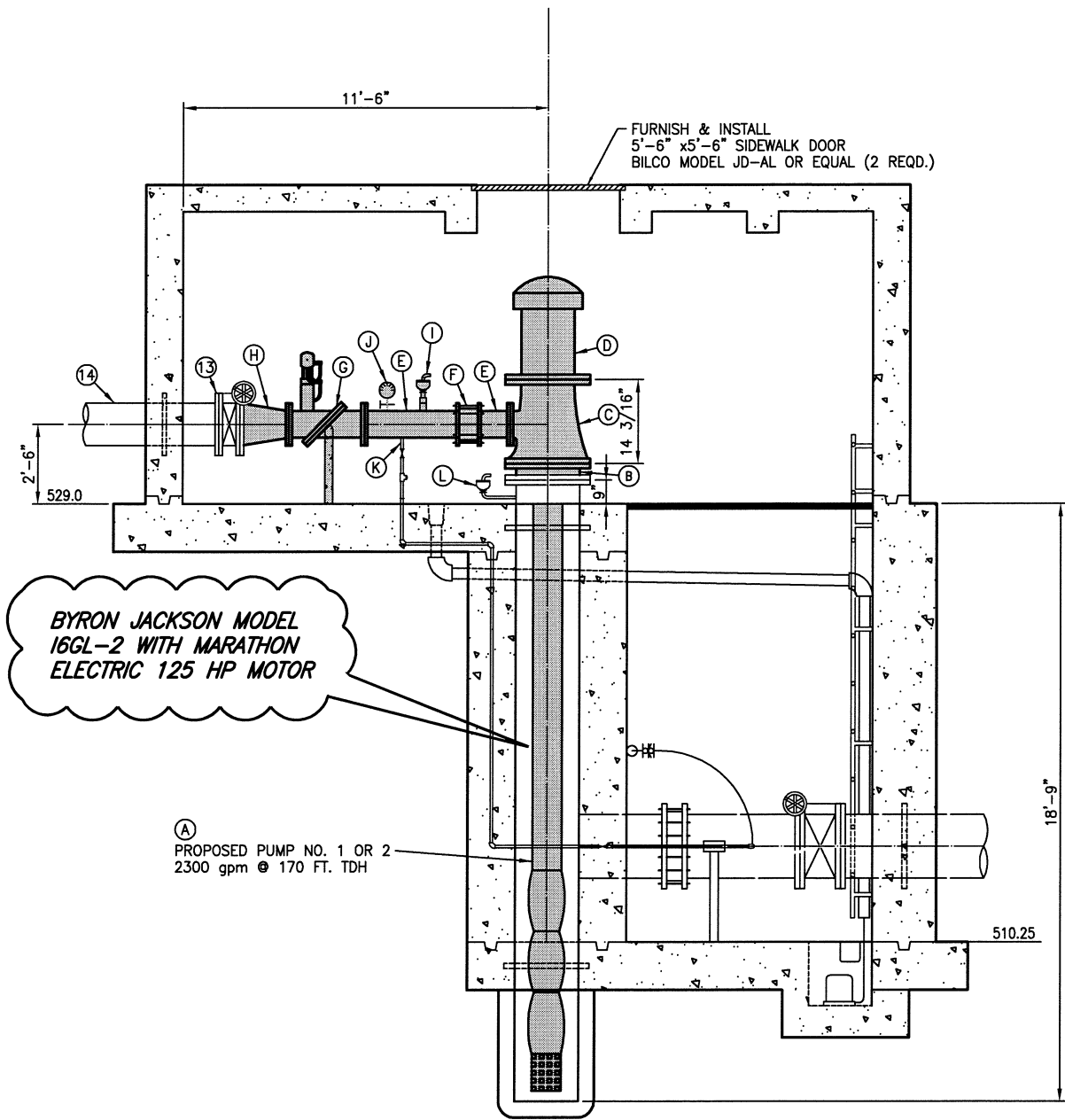


4/08/99 4LY H:\PROJECTS\ROCKWALL\98192\SHEETS\98192-05.DWG



**SECTION EXIST. PUMP 4**  
SCALE: 3/8"=1'-0"



**SECTION PROPOSED PUMPS 1, 2 AND ALTERNATE 4**  
SCALE: 3/8"=1'-0"

PROPOSED PUMP ROOM PIPING AND MATERIAL LEGEND				PROPOSED PUMP ROOM PIPING AND MATERIAL LEGEND			
PIPE NO.	PIPE TYPE	JOINT	DESCRIPTION	PIPE NO.	PIPE TYPE	JOINT	DESCRIPTION
(A)	-	-	REPLACE PUMP NO. 1 & 2 WITH 2300 gpm, 170 FT. TDH VERTICAL TURBINE PUMP, 10" DISCHARGE	(I)	-	THREADED	RE-SET EXISTING 2-INCH AIR & VACUUM VALVE
(B)	COAL-TAR EPOXY LINED STEEL	FLG.	EXISTING PUMP CAN TO PROPOSED PUMP HEADER ADAPTOR CONFIGURED AS REQUIRED BY PUMP MANUFACTURER	(J)	-	THREADED	RE-SET EXISTING PRESSURE GAUGE
(C)	CAST IRON	FLG.	PUMP HEAD w/10" DISCHARGE FLG.	(K)	-	THREADED	RE-CONNECT CHEMICAL FEED SUPPLY LINE
(D)	-	-	125 HP PUMP MOTOR DIRECTLY MOUNTED TO PUMP HEAD	(L)	-	-	EXISTING 2" AIR/VACUUM VALVE TO REMAIN IN SERVICE
(E)	D.I.P.	FLG.-P.E.	10" PUMP DISCHARGE SPOOL				
(F)	-	-	10" RESTRAINED COUPLING				
(G)	-	FLG.	10" PUMP CONTROL VALVE, TILTED DISK CHECK VALVE WITH TOP MOUNTED OIL FILLED DASHPOT, VAL-MATIC 9000T OR APPROVED EQUAL				
(H)	D.I.P.	FLG.	16"x10" CONCENTRIC REDUCER				

*This record drawing is a compilation of the sealed engineering drawing for this project; modified by addenda, change orders and information furnished by the contractor. The information shown on the record drawings that was provided by the contractor or others not associated with the design engineer cannot be verified for accuracy or completeness. This original sealed drawing are on file at the offices of Birkhoff, Hendricks & Conway, L.L.P.*  
BY G.C.H. DATE 05/06/02

These plans and related specifications were prepared for construction of this specific project only. Reuse of these documents is not permitted without written authorization of Shimek, Jacobs & Finklea.

*G.C.H.*  
04/02/1999



<b>CITY OF ROCKWALL, TEXAS</b>		
EXISTING PUMP 4 PROPOSED PUMPS 1, 2 & ALTERNATE 4 SECTION		
SHIMEK, JACOBS & FINKLEA, L.L.P. CONSULTING ENGINEERS Dallas, Texas		
DESIGNED BY: <u>G.C.H.</u>	PROJECT: <u>98 192</u>	SHEET NO. <u>5</u>
DRAWN BY: <u>S.J. &amp; F.</u>	DATE: <u>APRIL 1999</u>	OF <u>12</u> SHEETS