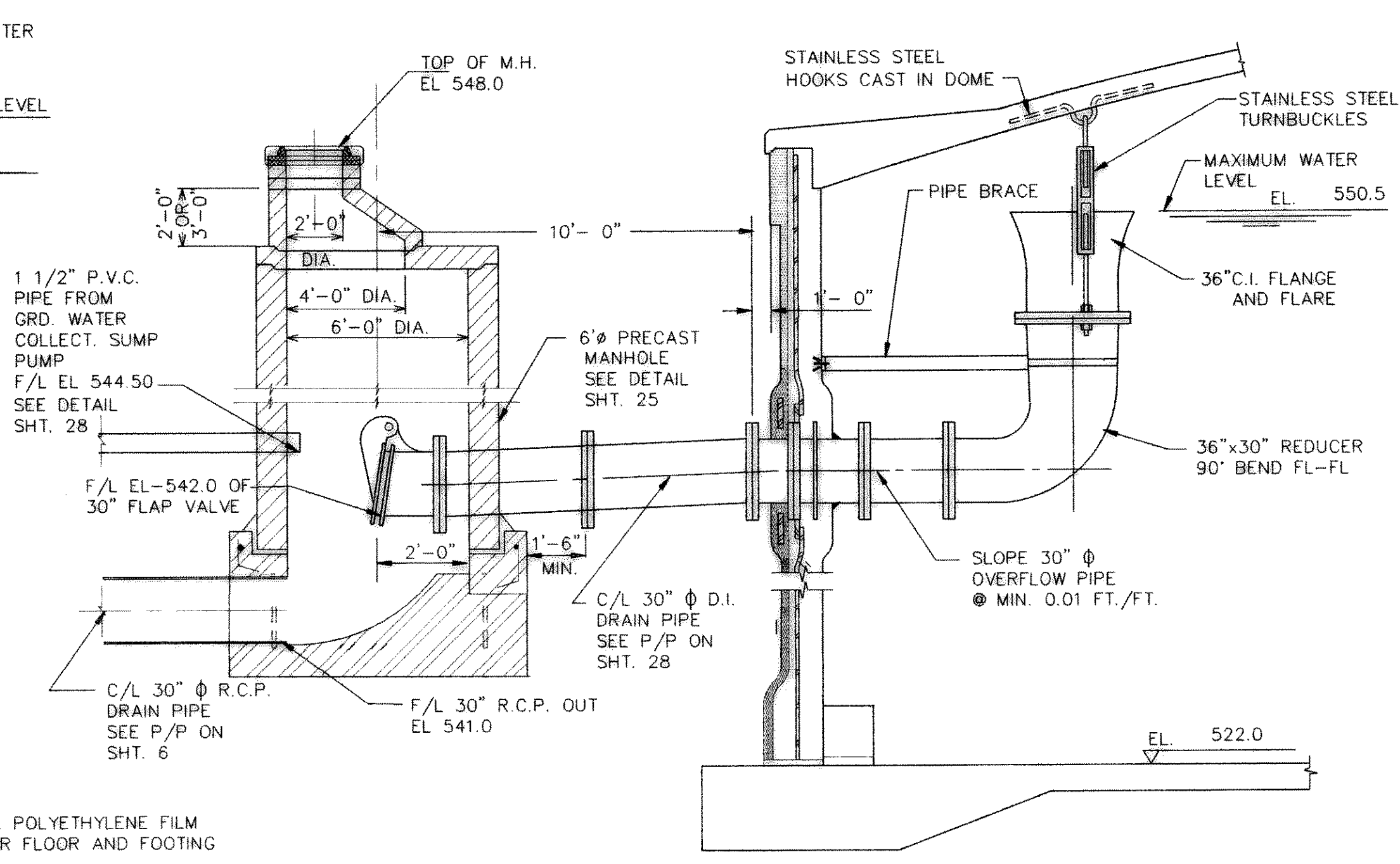
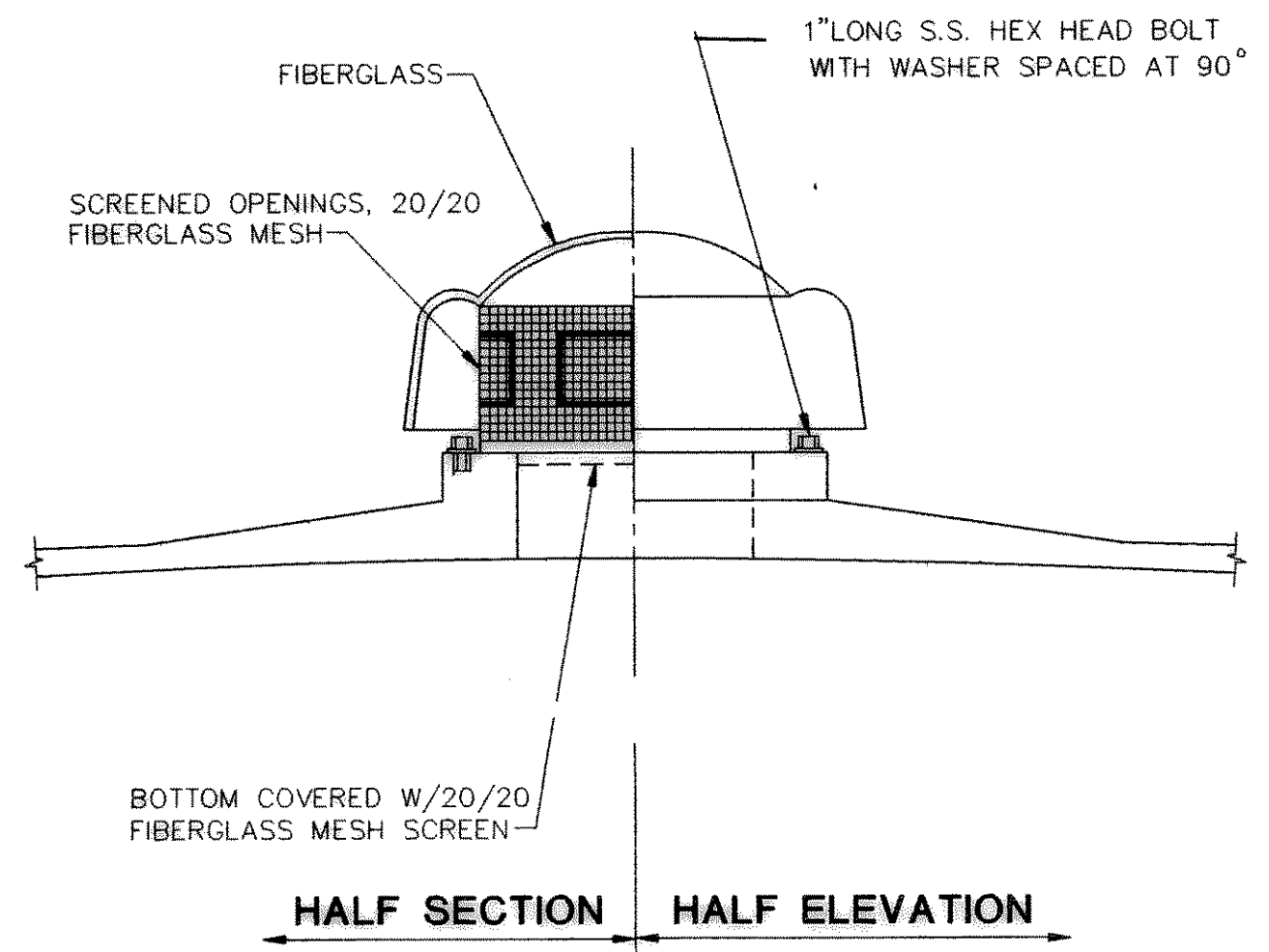


**TYPICAL TANK SECTION**  
N.T.S.

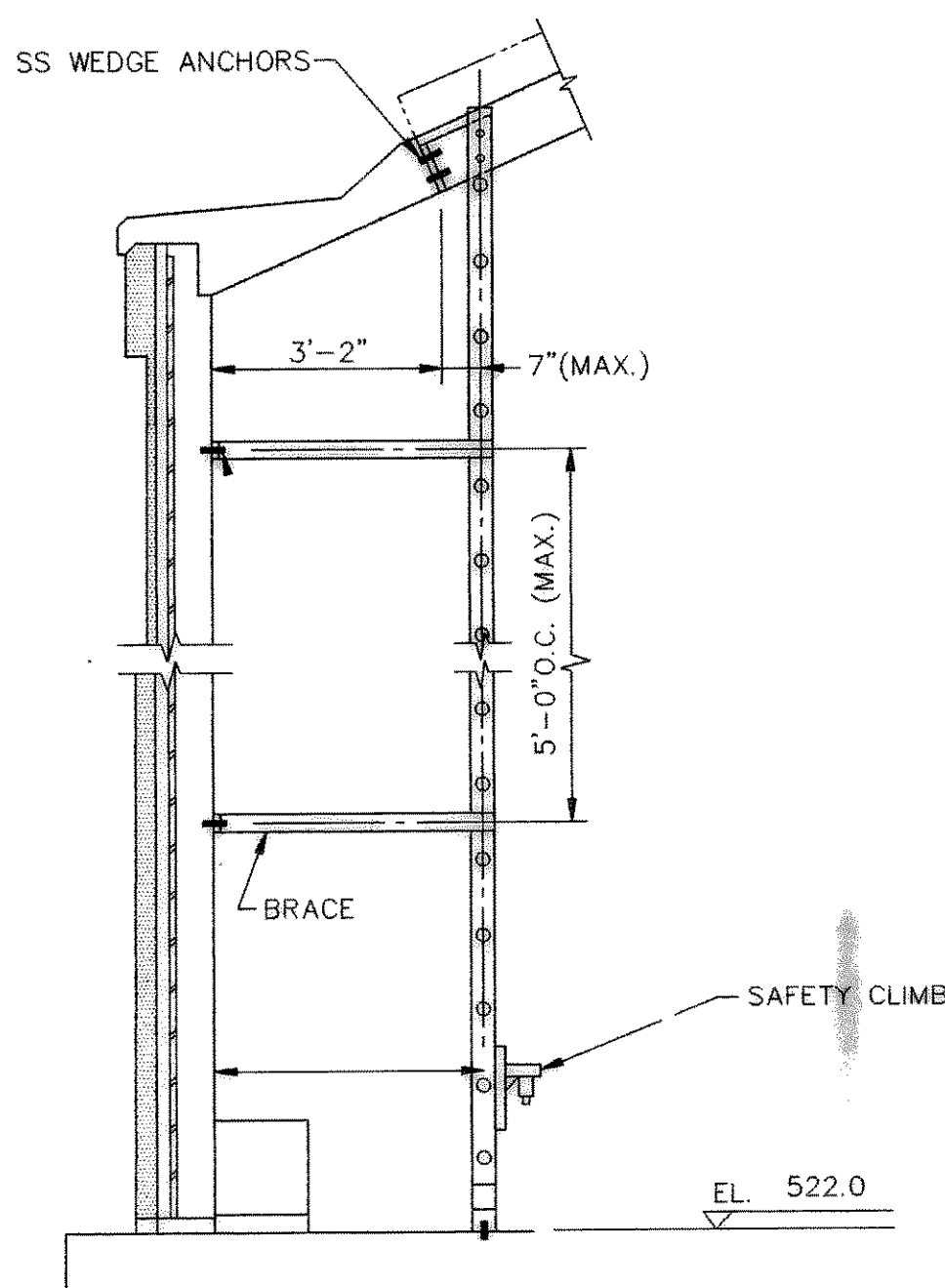
6" GRANULAR LEVELING BASE: PROVIDE A WELL GRADED CRUSHED ROCK GRADED FROM 3/4" U.S. SIEVE SIZE DOWNWARD WITH 100% PASSING 1" U.S. SIEVE AND NOT MORE THAN 8% PASSING NO.200 U.S. SIEVE. PLACE, SPREAD AND COMPACT MATERIAL IN HORIZONTAL LAYERS NOT TO EXCEED 6" EACH. COMPACT EACH LAYER WITH SMALL VIBRATORY ROLLER SUCH AS A "RAMMAX P24 OR P33" OR A "DYMAPAC CA15" OR THEIR APPROVED EQUAL. MAKE NOT LESS THAN 2 ROLLING PASSES IN EACH DIRECTION FOR EACH LAYER USING WATER FOR LUBRICATION AS NECESSARY. PROVIDE INSPECTION TO CERTIFY COMPACTION EFFORT. FOR "LEVELING BASES" WITH DEPTH GREATER THAN 12", SPECIAL CONSIDERATIONS AND/OR SPECIFICATIONS SHALL BE PROVIDED. FINE GRADE "LEVELING BASE" TO TOLERANCE OF PLUS ZERO INCHES TO MINUS ONE HALF INCH. RECOMPACT AFTER FINE GRADING IF NECESSARY.



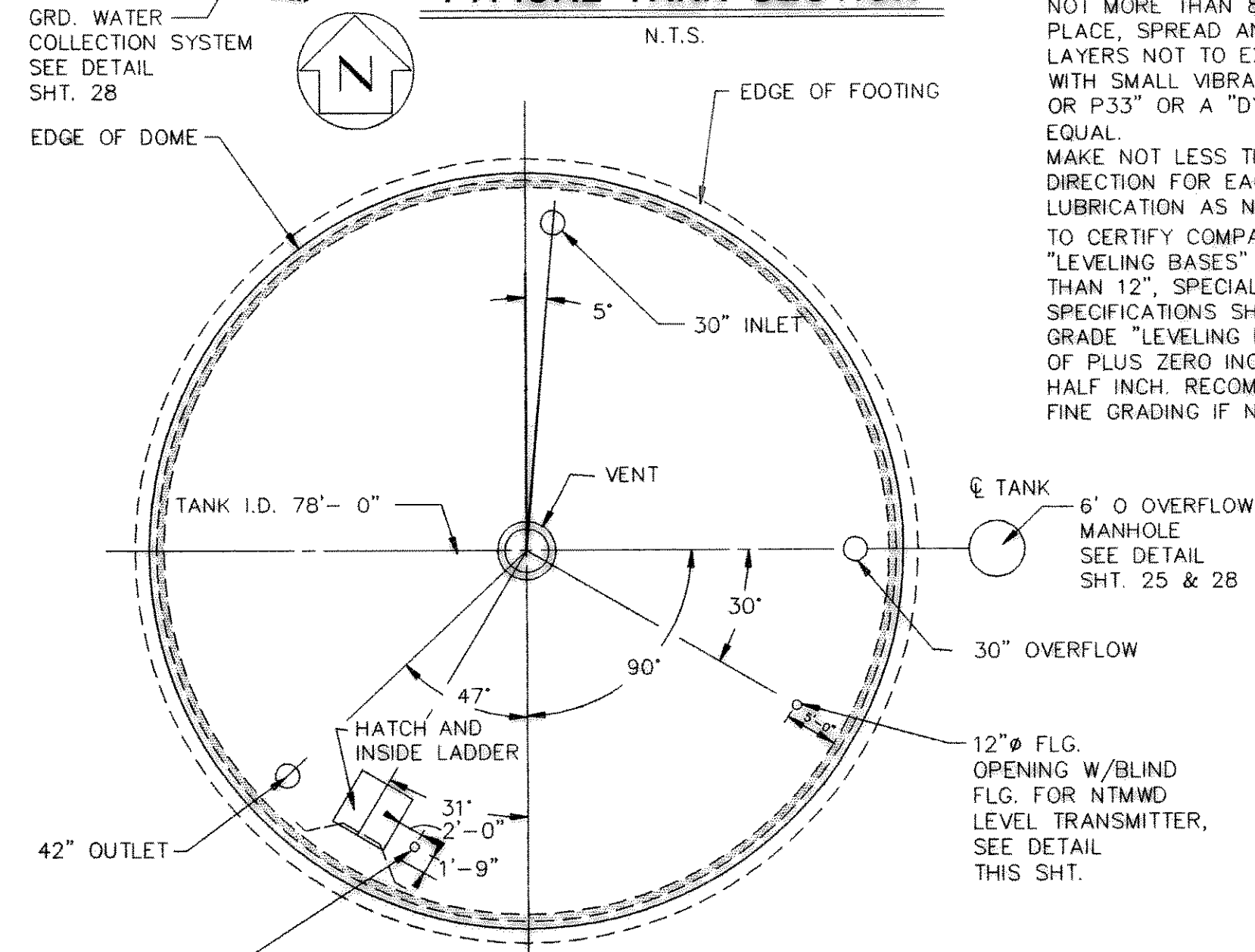
**OVERFLOW PIPE DETAIL**  
N.T.S.



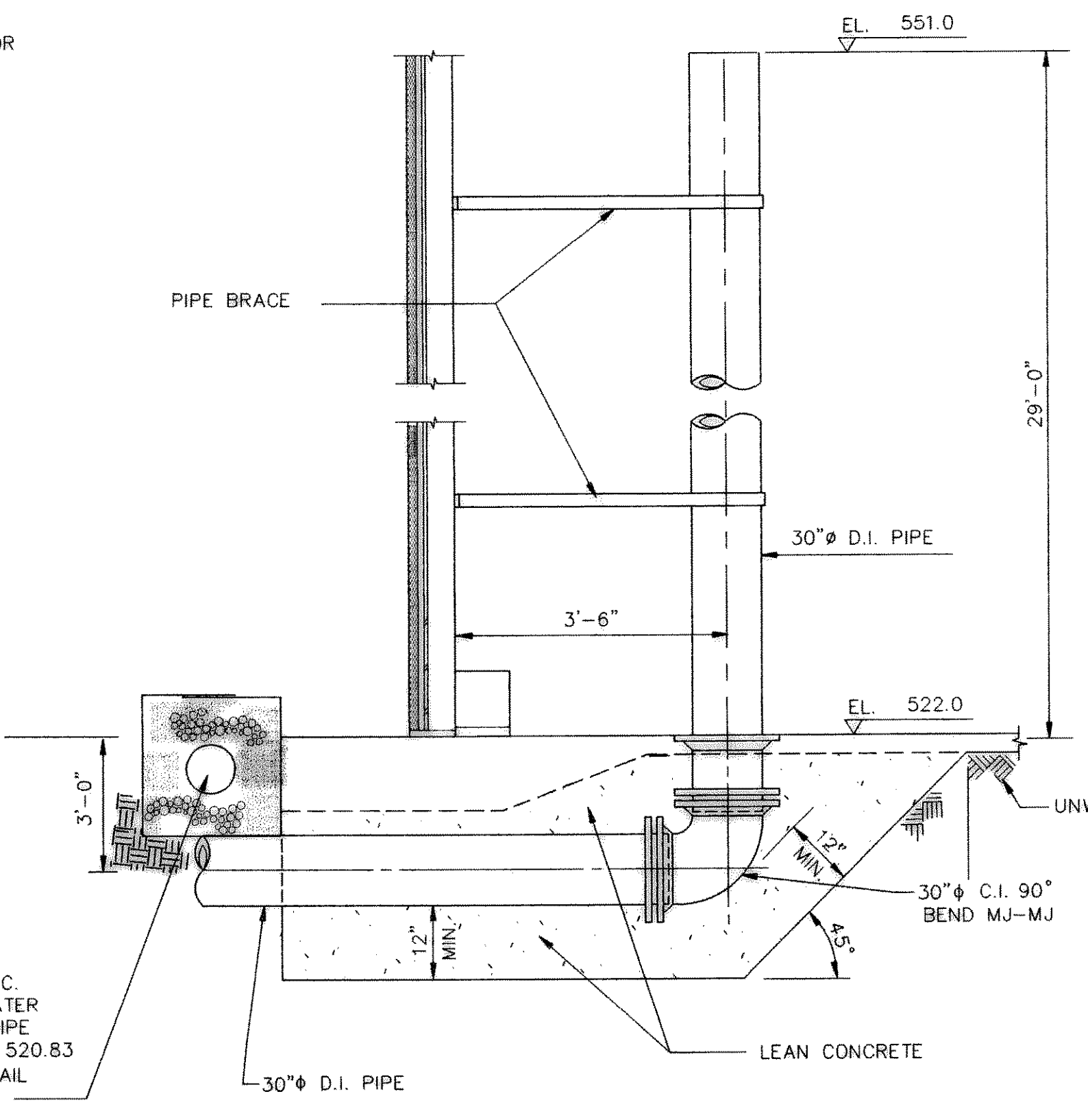
**VENT DETAIL**  
N.T.S.



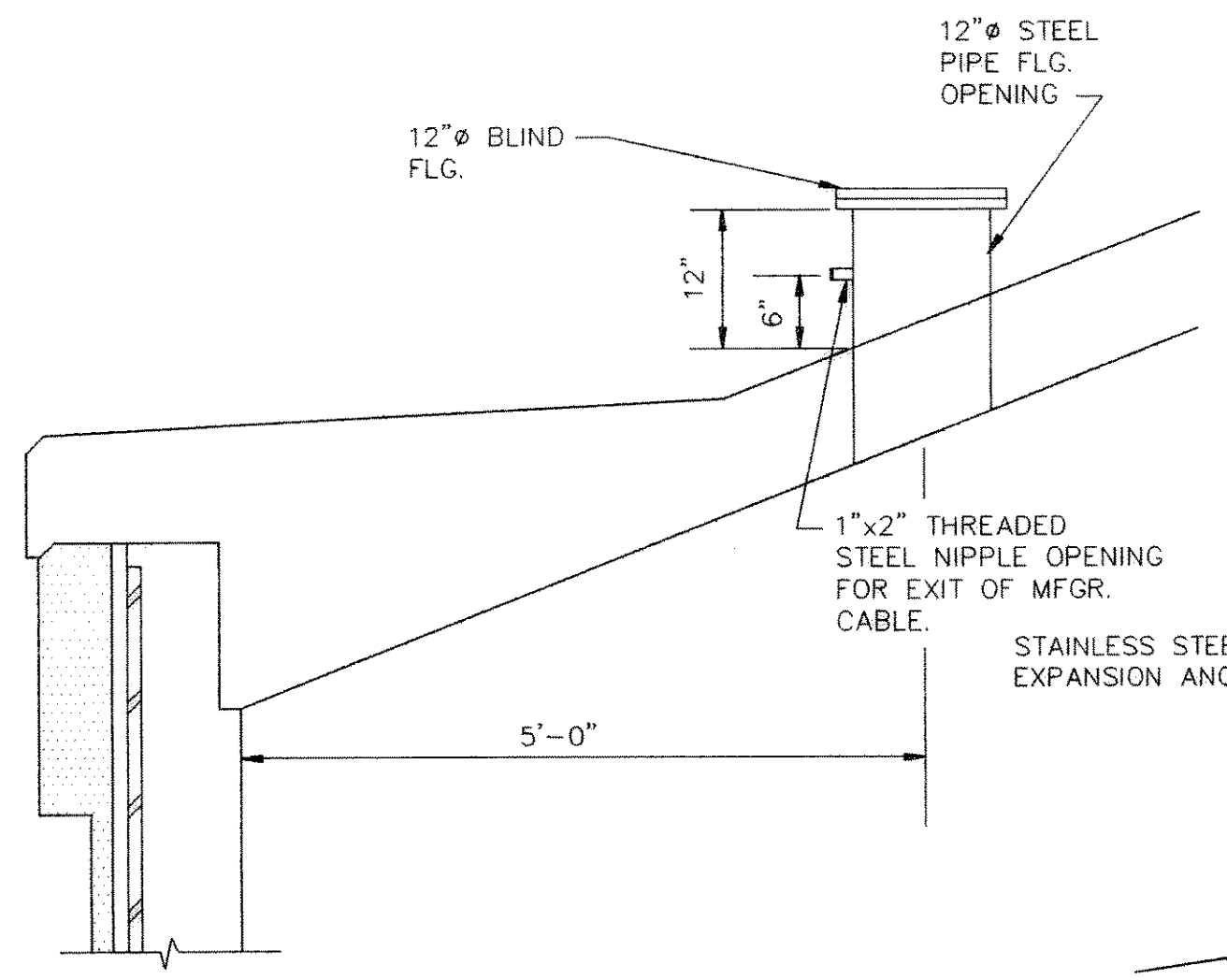
**INSIDE LADDER DETAIL**  
N.T.S.



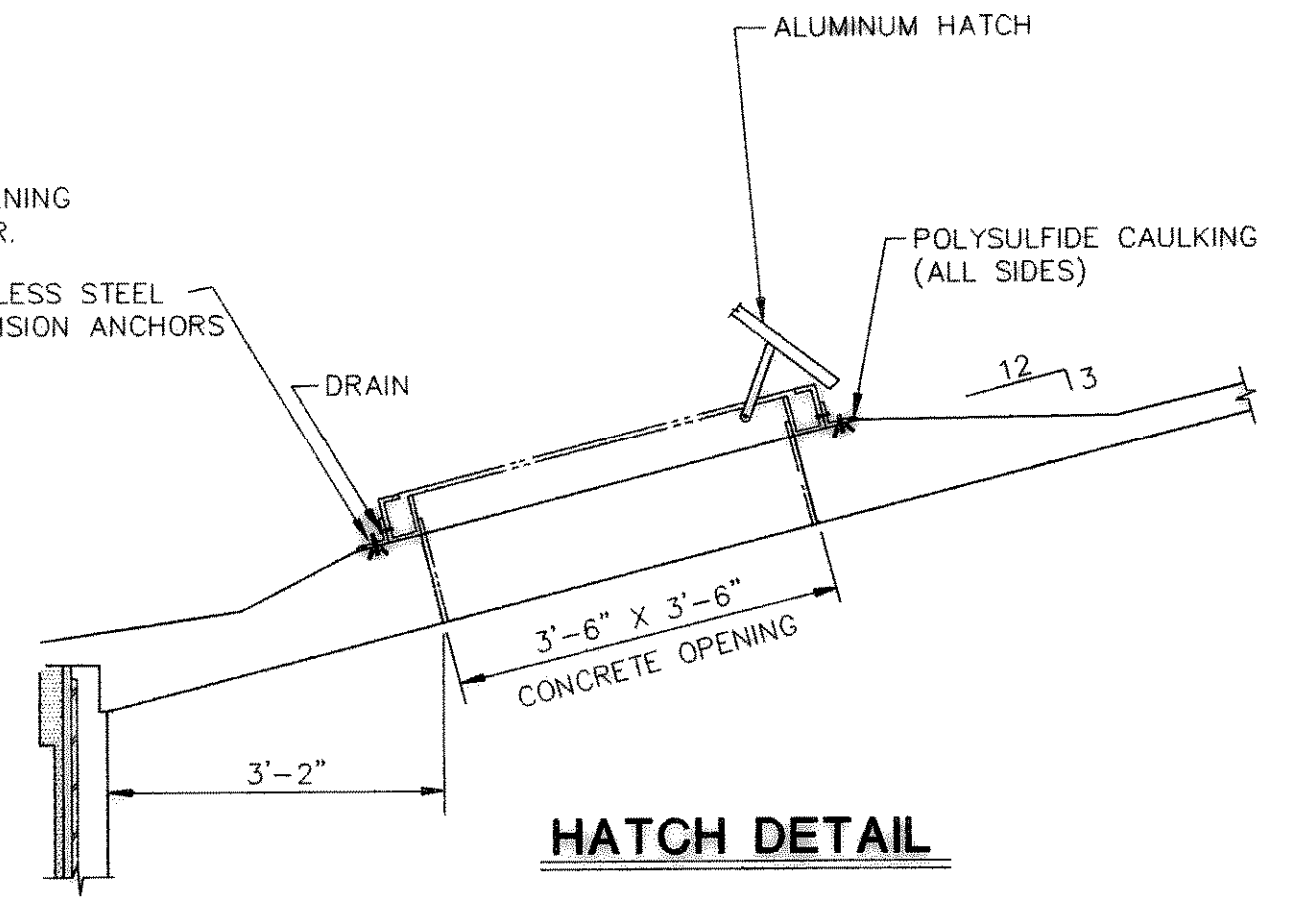
**TANK PLAN**  
N.T.S.



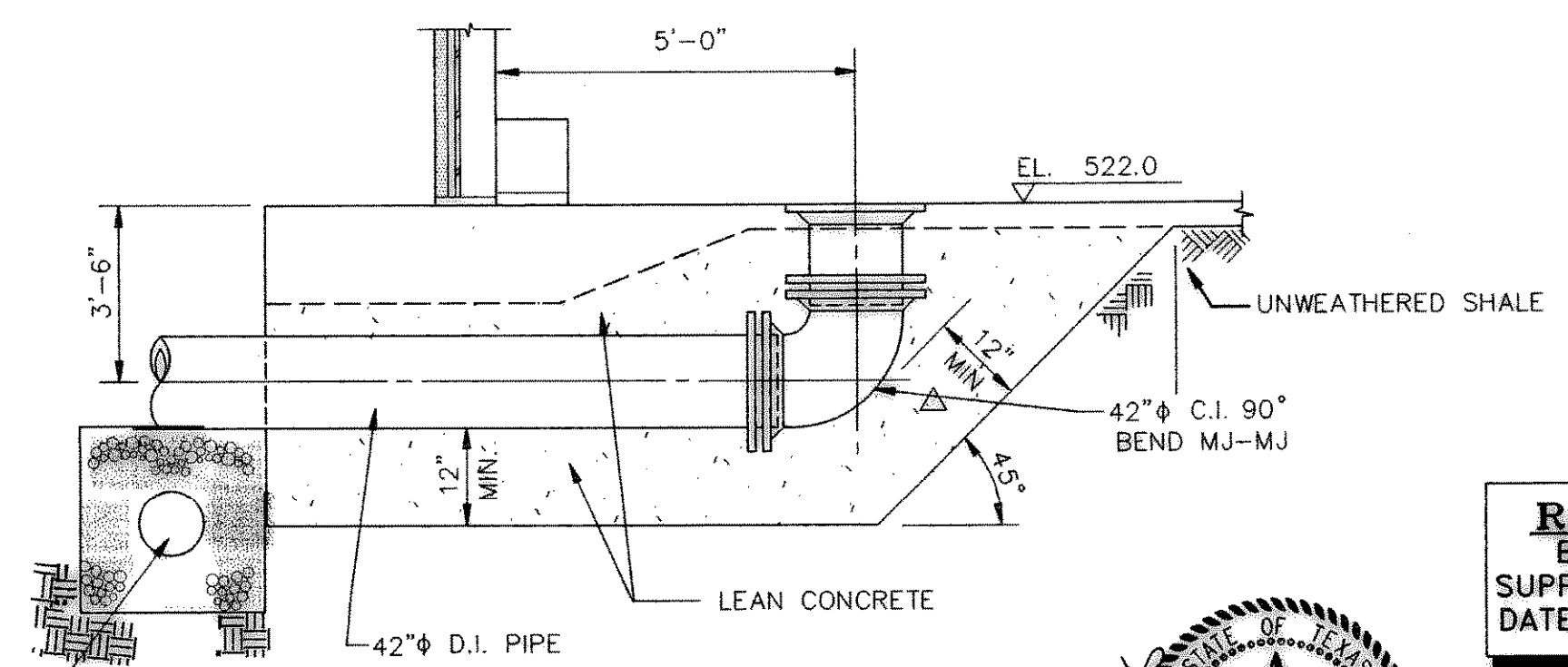
**INLET PIPE DETAIL**  
N.T.S.



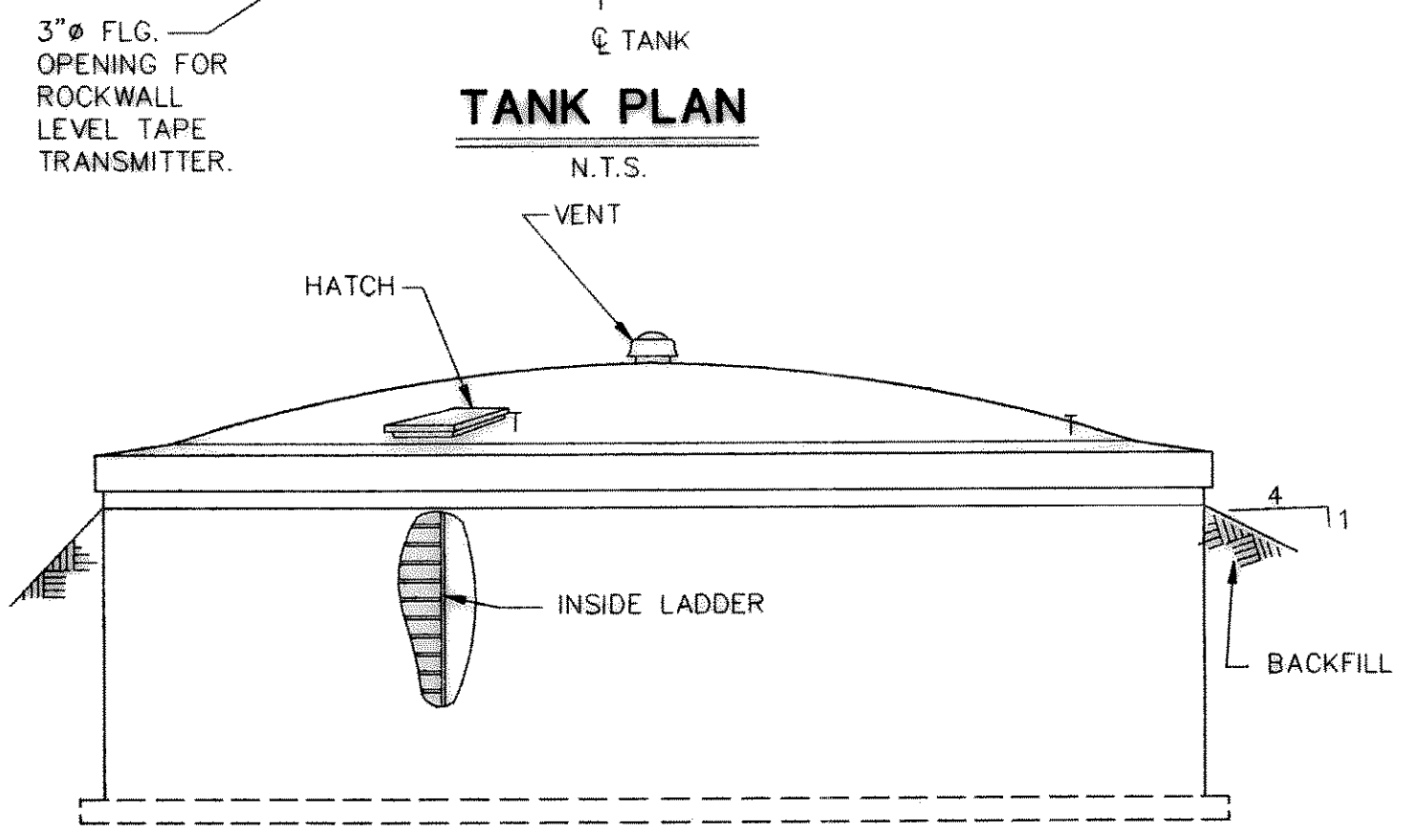
**NTMWD 12" Ø LEVEL TRANSMITTER OPENING DETAIL**  
N.T.S.



**HATCH DETAIL**  
N.T.S.



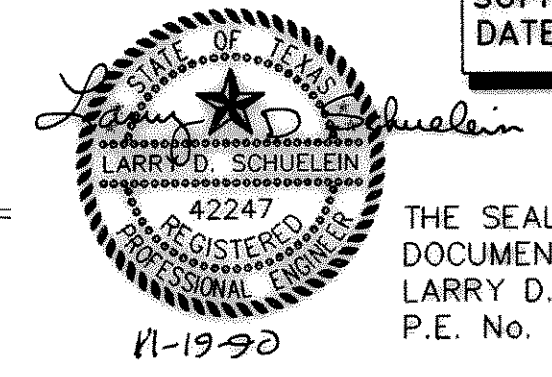
**OUTLET PIPE DETAIL**  
N.T.S.



**TANK ELEVATION**  
N.T.S.

NOTE:  
THIS DRAWING IS INCLUDED TO INDICATE ONLY THE LOCATIONS, ELEVATIONS AND SIZES OF THE TANK AND THE INLET AND OVERFLOW PIPING. THIS DRAWING DOES NOT REFLECT ANY DESIGN THICKNESS OR REINFORCING OF THE PRESTRESSED CONCRETE TANK. THE CONTRACTOR SHALL SUBMIT RECORD DATA FOR THE PROPOSED PRESTRESSED CONCRETE TANK, FOUNDATION AND ALL APPURTENANCES.

**RECORD DRAWING**  
BASED ON INFORMATION SUPPLIED BY THE CONTRACTOR  
DATE: 10/2/92 BY: LDS



THE SEAL APPEARING ON THIS DOCUMENT WAS AUTHORIZED BY LARRY D. SCHUELEIN, TEXAS P.E. No. 42247 ON NOV. 19, 1990

ACAD Ref 12  
R0KDWG27.DWG  
OCT 2, 1992  
User: Hugo Trevino  
10:30:12 A.M.

DATE	REVISION	BY	CHECKED:

DESIGNED:	JOB NO ROK89005
DRAWN:	DATE 11/19/90
TRACED:	SCALE AS SHOWN
CHECKED:	

**FRESE AND NICHOLS, INC.**  
CONSULTING ENGINEERS  
FORT WORTH - ARLINGTON - AUSTIN, TEXAS

CITY OF ROCKWALL, TEXAS  
**EASTSIDE PUMP STATION**

STRUCTURAL  
**1 MG PRESTRESSED CONCRETE TANK**

SHEET  
27 OF 39