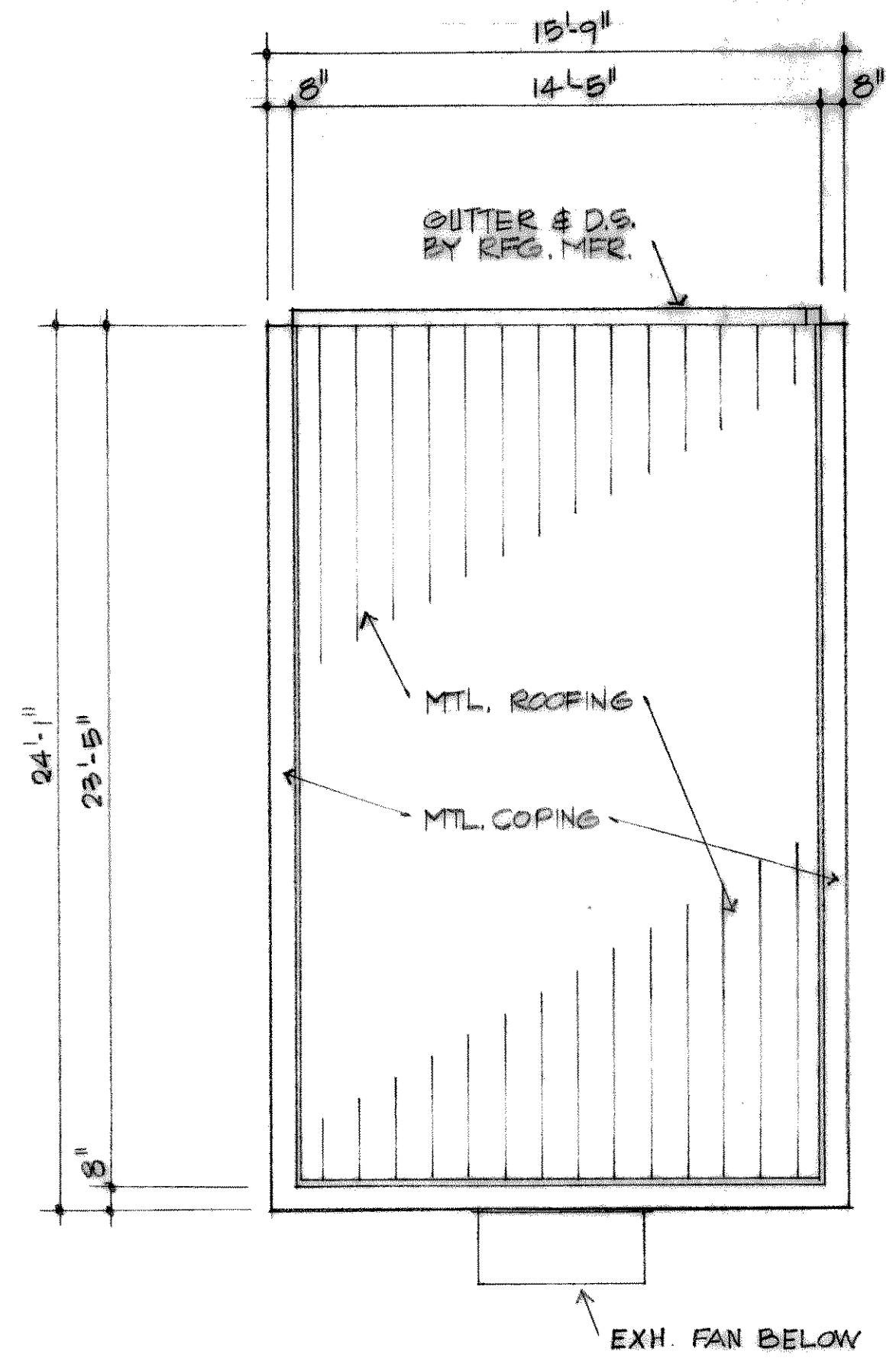
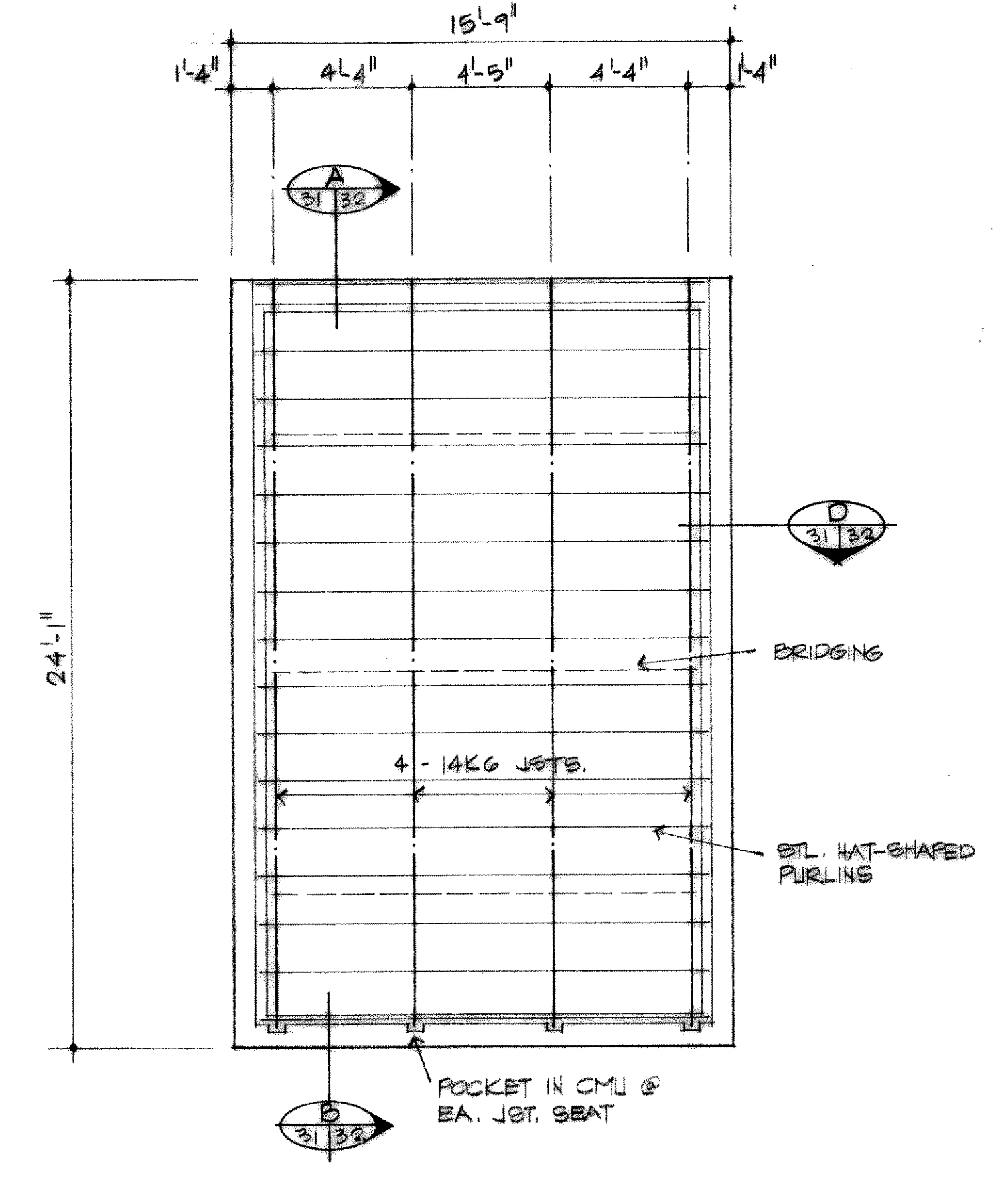


FLOOR PLAN
SC
1/4" = 1'-0"



ROOF PLAN
SC
1/4" = 1'-0"



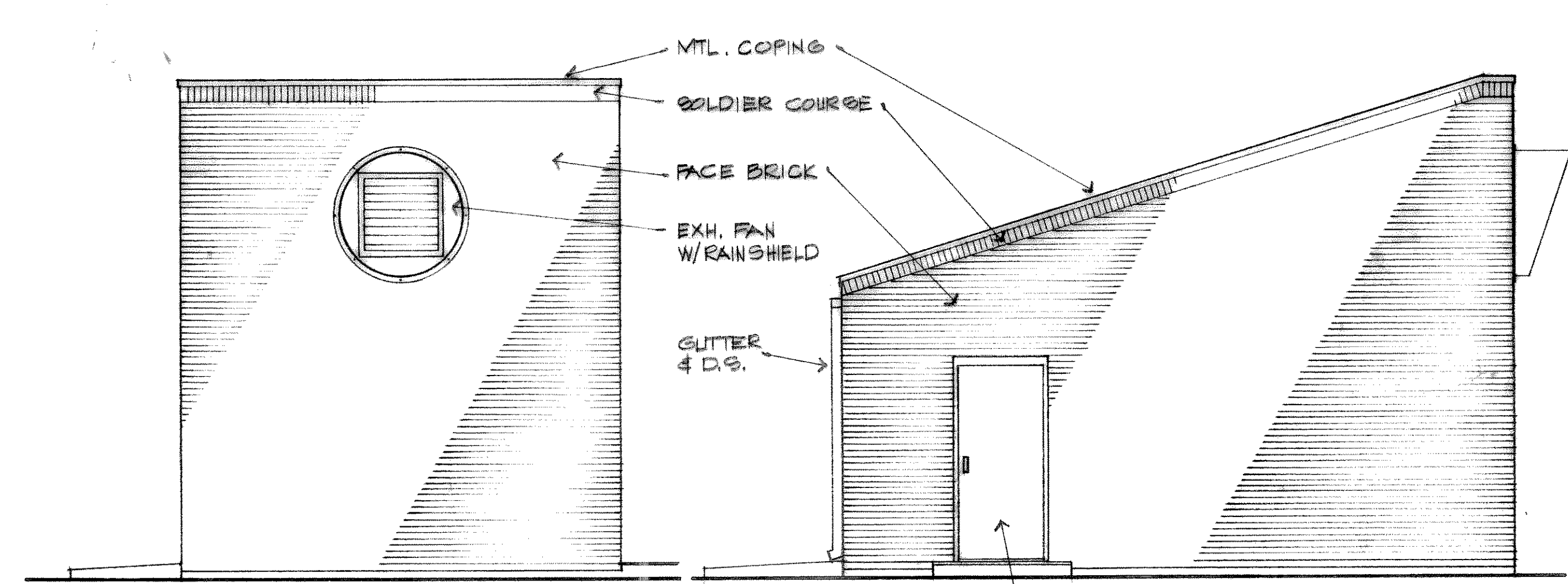
ROOF FRAMING PLAN
SC
1/4" = 1'-0"

EXHAUST FAN EF-1 - "PENN" FB 303
5000 CFM @ 25' Wg
1/2 HP @ 480V/3P/60 HZ

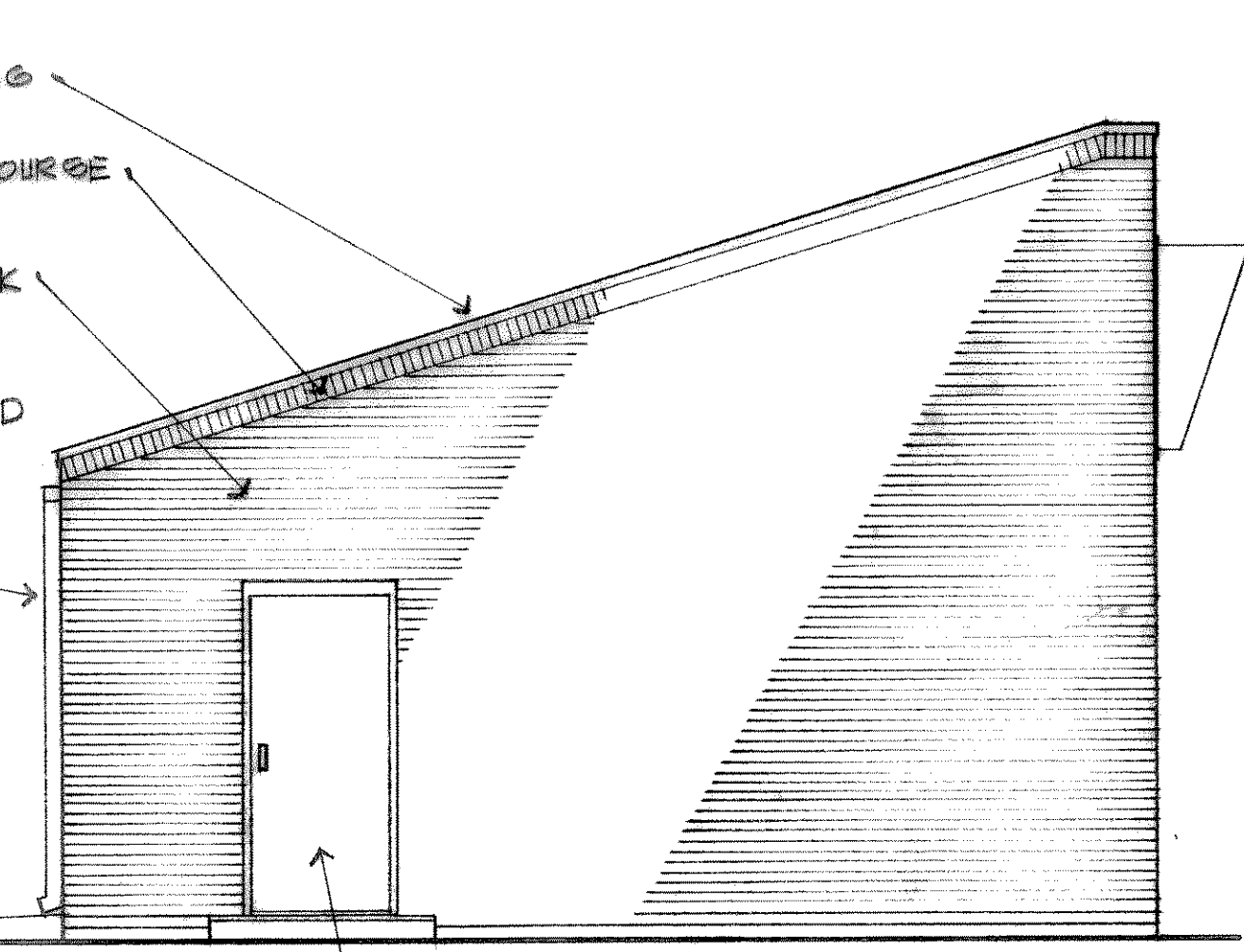
INTAKE HOUSING IH-1 - PENNHOUSE
24" x 76" x 18" H.
W/ MOTORIZED DAMPER
INTERLOCK W/ EF-1

UNIT HEATERS UH-1 MARKEL P3P5115 CAI
15 KW @ 480V/3P/60HZ -18.7AMP
UH-2 51,200 BTUH/1100 CFM @ 1580 FPM
UH-3 DCS 263 - 3P/25A DRC SW
AG176 SPST LOW VOLTAGE THERMOSTAT

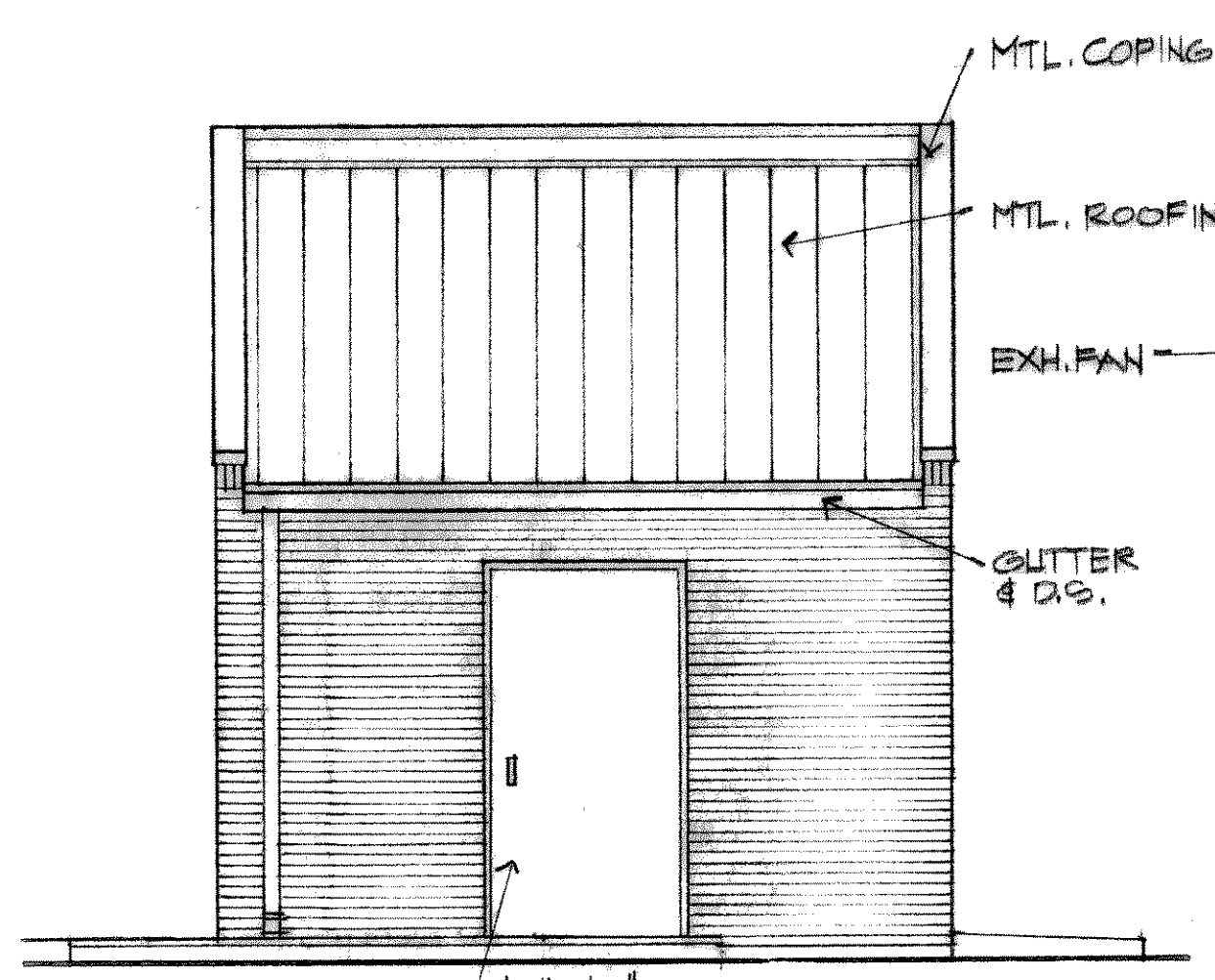
*SEE SHT. 7 FOR EF-2 & IH-1
LOCATIONS & INFO



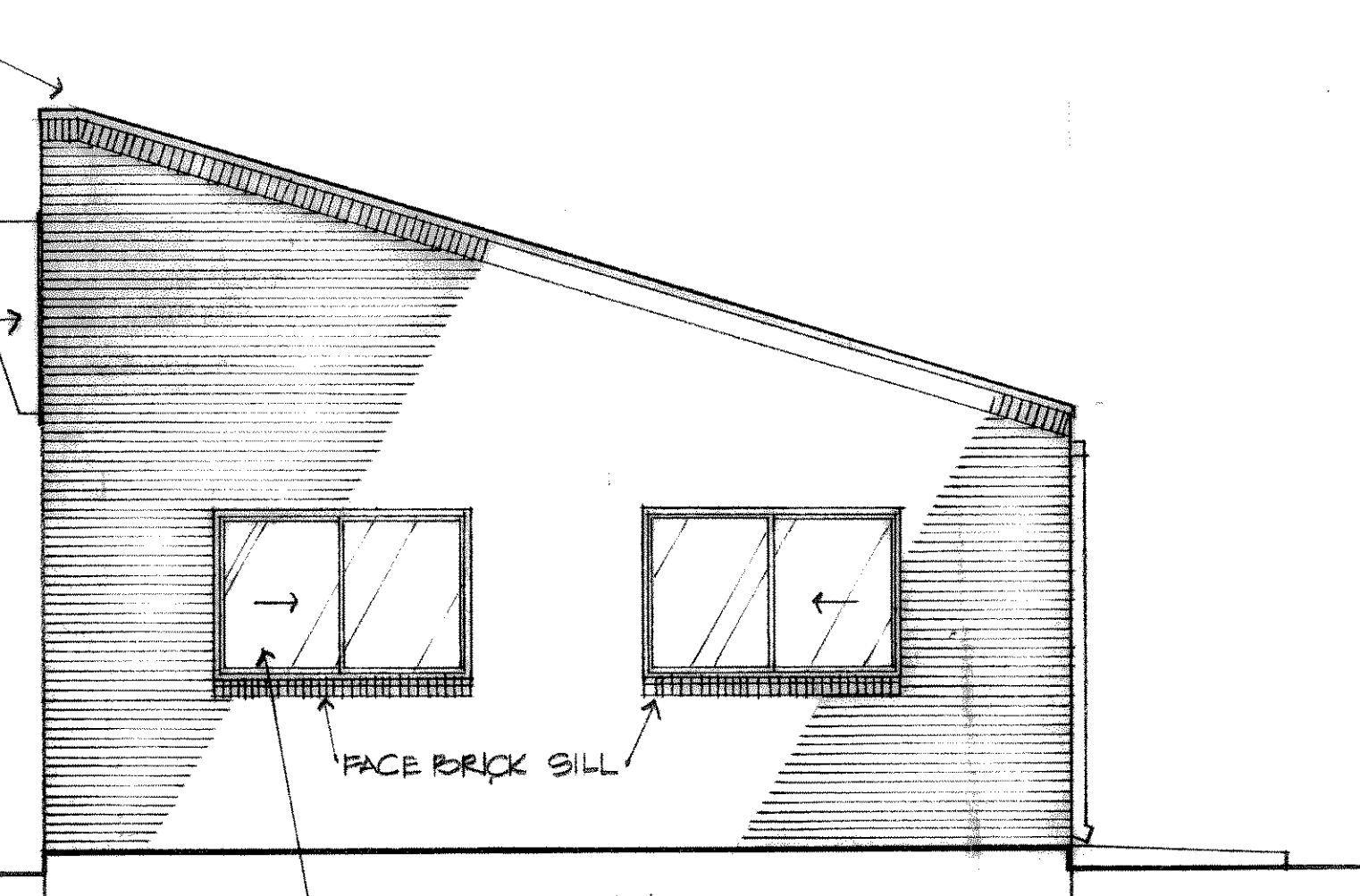
SOUTH ELEVATION
SC
1/4" = 1'-0"



WEST ELEVATION
SC
1/4" = 1'-0"



NORTH ELEVATION
SC
1/4" = 1'-0"



EAST ELEVATION
SC
1/4" = 1'-0"

RECORD DRAWING
BASED ON INFORMATION FURNISHED
BY THE CONTRACTOR
DATE 10-2-92

R. Paul Pruitt
ARCHITECT
DEC 2, 1992

DESIGNED	LB	JOB NO.	ROK 89005	FREES AND NICHOLS, INC. CONSULTING ENGINEERS FORT WORTH-ARLINGTON-AUSTIN, TEXAS	CITY OF ROCKWALL, TEXAS	ARCHITECTURAL	SHEET
DRAWN	LB	DATE	10/90				
TRACED	LB	SCALE	NOTED				
CHECKED	LB	BY					