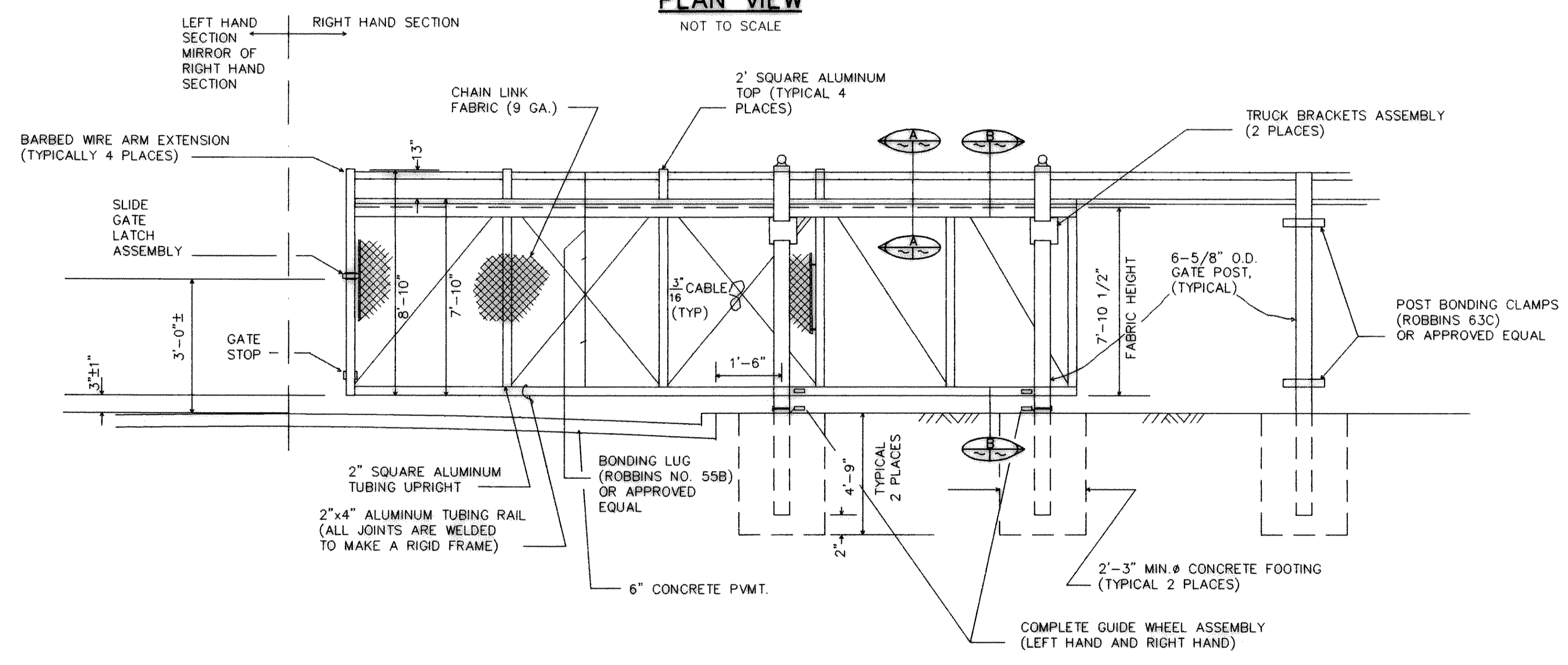
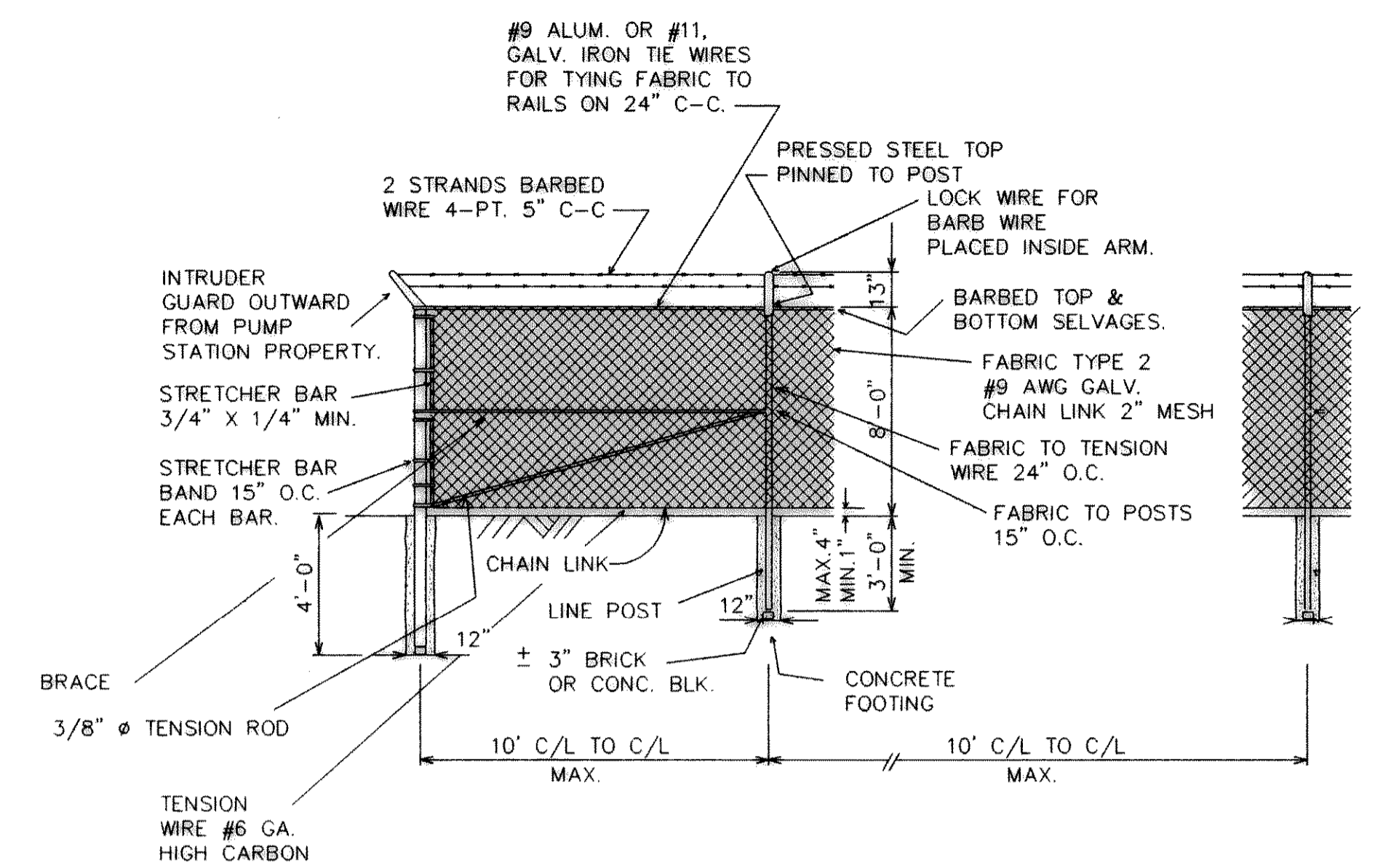
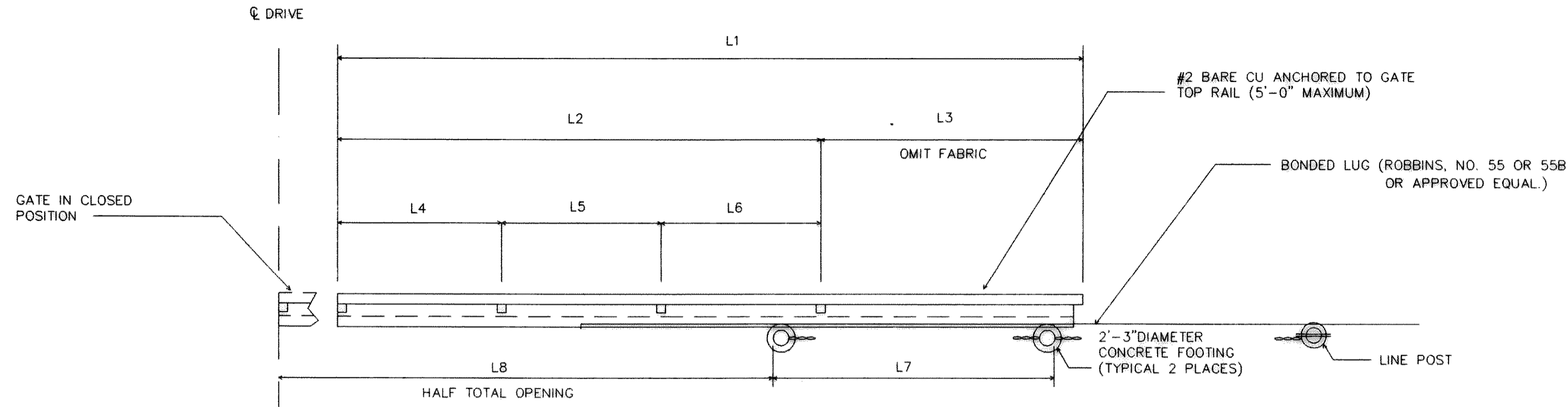


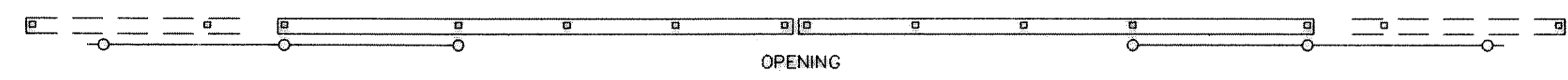
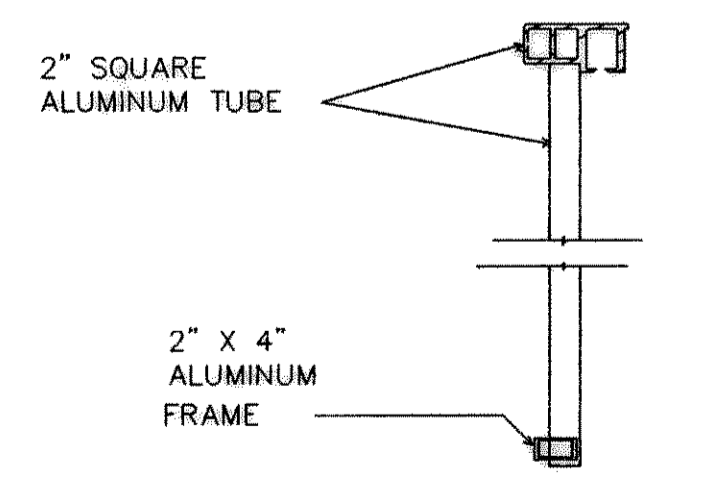
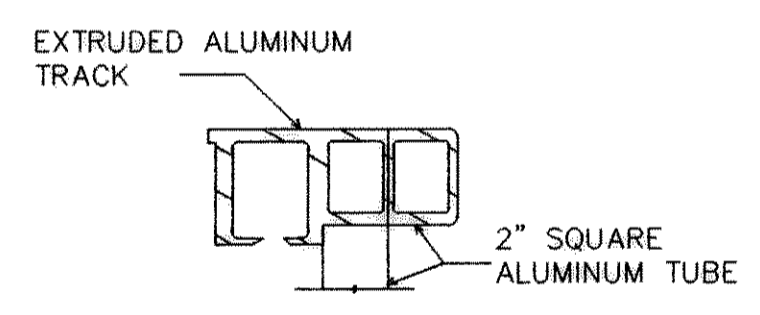
GATE	L1	L2	L3	L4	L5	L6	L7	L8
1 & 2	21'-1 5/8"	14'-1 1/2"	7'-1/2"	4'-9"	4'-8 1/2"	4'-7 1/8"	7'-0"	14'-0"



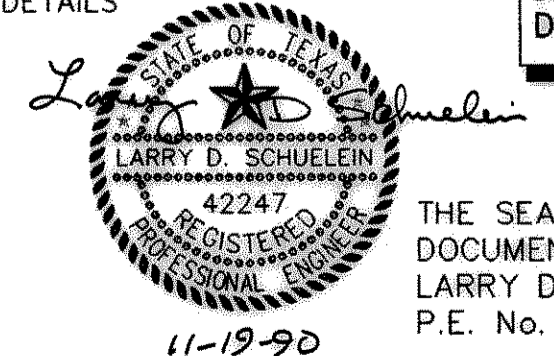
POST & RAIL SCHEDULE				
USE	STD. SIZE (NOM.)	O.D.	STD. 40 WALL THICK	WT./FT.
TOP RAIL	2"	2.375"	0.154"	3.65#
LINE POST	3"	3.500"	0.216"	7.57#
CORNER & TERMINAL	6"	6.625"	0.280"	18.97#
GATE POSTS	6"	6.625"	0.280"	18.97#

NOTES

- GALVANIZED POSTS SHALL BE COATED WITH ZINC INSIDE AND OUTSIDE BY THE HOT-DIP PROCESS AND SHALL NOT BE LESS THAN 1.8 OUNCE PER SQUARE FOOT OF THE TOTAL COATED SURFACE. THE ZINC USED SHALL CONFORM TO ASTM DESIGNATION B64.
- FENCES AND GATE SHALL BE FURNISHED COMPLETE WITH ALL NECESSARY FITTINGS.
- FOR GATES- SIZES OF PIPES, SAG RODS AND TURN-BUCKLES SHALL BE MANUFACTURER'S STANDARD WHICH ALSO MEET THE REQUIREMENTS OF THIS DRAWING.
- POSTS SHALL BE ROLLED TUBING OR EXTRUDED SECTIONS OF STEEL OR ALUMINUM CAPABLE OF WITHSTANDING A LATERAL FORCE OF 100 POUNDS APPLIED AT THE TOP. ALL HOLLOW POSTS SHALL BE CAPPED.
- ALL CONCRETE SHALL BE 3000 LBS. WITH 5" MAX. SLUMP AND 3/4" MAXIMUM SIZE AGGREGATE.
- ALL RAILS, POSTS, AND GATE FRAMES SHALL BE ASTM A53, SCHEDULE 40.
- SEE SHT. 25 FOR SWING GATE DETAILS



**RECORD DRAWING**  
BASED ON INFORMATION  
SUPPLIED BY THE CONTRACTOR  
DATE: 10/2/92 BY: LDS



THE SEAL APPEARING ON THIS DOCUMENT WAS AUTHORIZED BY LARRY D. SCHUELEIN, TEXAS P.E. No. 42247 ON NOV. 19, 1990

ACAD File 12  
ROKDWG24.DWG  
OCT 2, 1992 10:09:12 A.M.  
User: Hugo Trevino