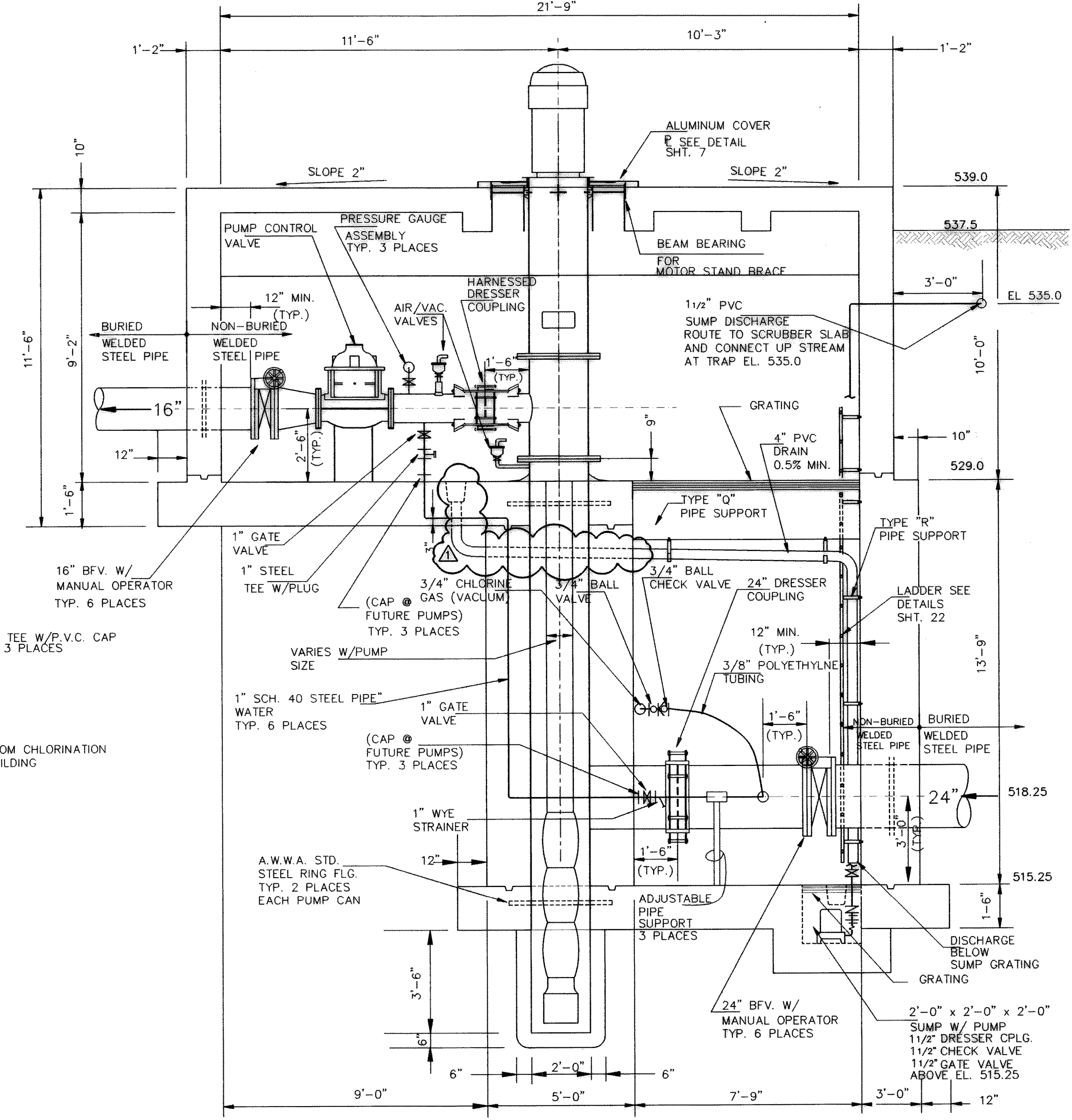


SECTIONAL PLAN
SCALE: 1/4"=1'-0"



SECTION
SCALE: 3/8"=1'-0"

TABLE 1

ITEM	PUMP No. 1	PUMP No. 2	PUMP No. 3	FUTURE PUMPS
REDUCER	6" x 16"	8" x 16"	10" x 16"	12" x 16"
PIPING & CONTROL VALVE SIZE	6"	8"	10"	12"
GPM	800	1500	2300	3250

NOTES:

- CHLORINATION EJECTORS SHALL BE PROVIDED AT SUCTION LINES FOR PUMPS NO. 1, 2 AND 3. SUCTION LINES FOR FUTURE PUMPS SHALL BE TAPED AND PLUGGED, 1" WATER PIPING SHALL BE PROVIDED FOR EACH OF THE THREE INITIAL PUMPS. EMBEDDED PIPING SHALL BE PROVIDED FOR THE THREE FUTURE PUMPS AND CAPPED NEAR THE FACE OF THE CONCRETE WALL.
- ROUTE TUBING FROM PUMP CONTROL VALVES, PACKING GLANDS AND AIR/VACUUM VALVES TO DRAINAGE TRENCH.
- THE EXTERIOR SURFACES OF ALL BURIED WELDED STEEL PIPE SHALL BE CEMENT MORTAR COATED IN ACCORDANCE WITH AWWA C205 AND THE INTERIOR SURFACES CEMENT MORTAR LINED. THE EXTERIOR SURFACES OF ALL NON-BURIED WELDED STEEL PIPE SHALL BE CLEANED AND SHOP PRIMED READY FOR PAINTING AND THE INTERIOR SURFACES COAL-TAR EPOXY LINED.
- INSULATING GASKETS SHALL BE PROVIDED BETWEEN BUTTERFLY VALVES AND EXTERIOR WELDED STEEL PIPES.

RECORD DRAWING
BASED ON INFORMATION
SUPPLIED BY THE CONTRACTOR
DATE: 10/2/92 BY: LDS

THE SEAL APPEARING ON THIS DOCUMENT WAS AUTHORIZED BY LARRY D. SCHUELEIN, TEXAS P.E. No. 42247 ON NOV. 19, 1990

User: Hugo Trevino
ROKDWG08.DWG
OCT 01, 1992