

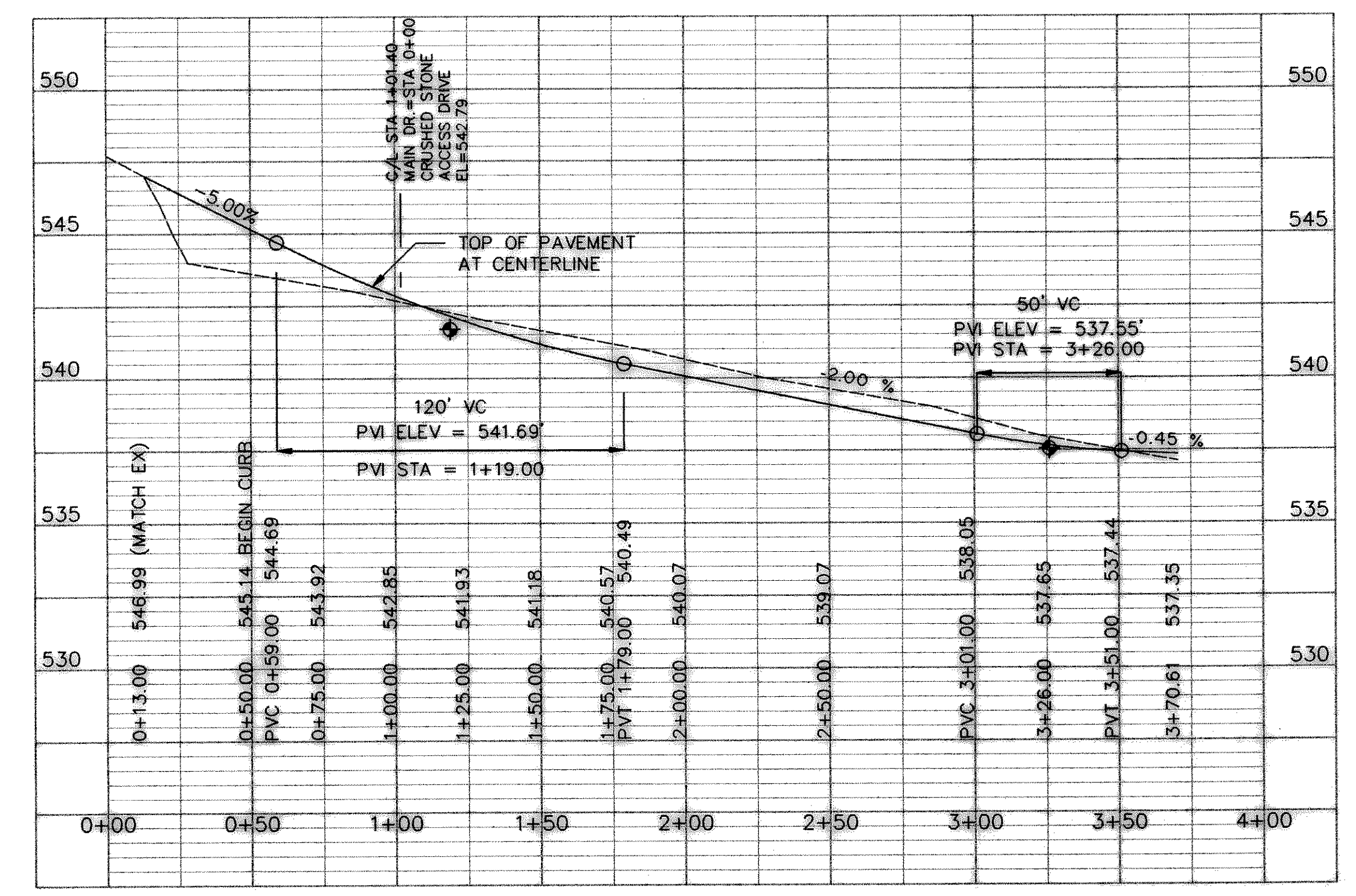
T.B.M. No. 1
 R/R SPIKE SET IN POWER
 POLE AT SOUTH SIDE OF
 I.H. 30 SERVICE ROAD, 180'
 EAST OF ROCKWALL CLASSIC
 CARS & BODY SHOP, ACCROSS
 FROM I.H. 30 ENTRANCE RAMP.
 ELEV. 546.80

APPROXIMATE LIMITS OF
 CONSTRUCTION FOR THE
 NTMWD METER VAULT.
 CONTRACTOR SHALL COORDINATE
 ACCESS WITH THE CONTRACTOR
 DOING THE NTMWD WORK.

CURVE TABLE

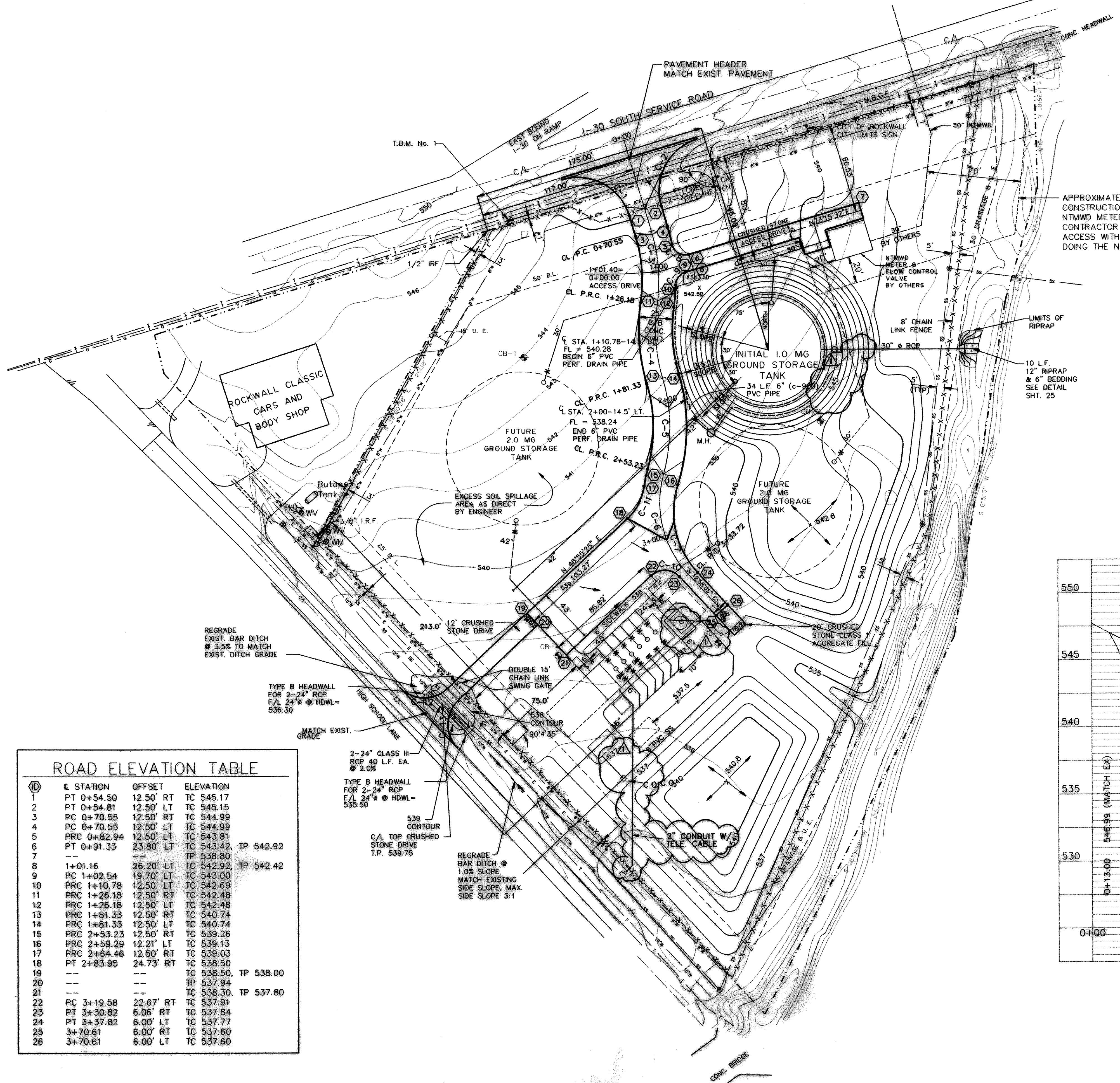
CRV NO	RADIUS	DELTA	TANGENT	LENGTH	CHORD
C-1	40.00	90°09'54"	40.12'	62.95'	56.65'
C-2	40.00	90°13'20"	40.16'	62.99'	56.68'
C-3	127.50	24°59'53"	28.26'	55.63'	55.19'
C-4	127.50	24°47'04"	28.01'	55.15'	54.72'
C-5	127.50	32°18'39"	36.93'	71.90'	70.95'
C-6	78.50	58°45'06"	44.19'	80.49'	77.01'
C-7	66.00	60°50'37"	38.76'	70.09'	66.84'
C-8	10.00	95°33'57"	11.02'	16.68'	14.81'
C-9	10.00	71°55'16"	7.25'	12.55'	11.74'
C-10	15.00	90°06'30"	15.03'	23.59'	21.23'
C-11	40.00	39°20'21"	14.30'	27.46'	26.93'
C-12	25.00	90°00'40"	25.00'	39.27'	35.36'
C-13	25.00	90°10'49"	25.08'	39.35'	35.41'

C/L ROADWAY PROFILE



ROAD ELEVATION TABLE

ID	STATION	OFFSET	ELEVATION
1	PT 0+54.50	12.50' RT	TC 545.17
2	PT 0+54.81	12.50' LT	TC 545.15
3	PC 0+70.55	12.50' RT	TC 544.99
4	PC 0+70.55	12.50' LT	TC 544.99
5	PRC 0+82.94	12.50' LT	TC 543.81
6	PT 0+91.33	23.80' LT	TC 543.42, TP 542.92
7	---	---	TP 538.80
8	1+01.16	26.20' LT	TC 542.92, TP 542.42
9	PC 1+02.54	19.70' LT	TC 543.00
10	PRC 1+10.78	12.50' LT	TC 542.69
11	PRC 1+26.18	12.50' RT	TC 542.48
12	PRC 1+26.18	12.50' LT	TC 542.48
13	PRC 1+81.33	12.50' RT	TC 540.74
14	PRC 1+81.33	12.50' LT	TC 540.74
15	PRC 2+53.23	12.50' RT	TC 539.26
16	PRC 2+59.29	12.21' LT	TC 539.13
17	PRC 2+64.46	12.50' RT	TC 539.03
18	PT 2+83.95	24.73' RT	TC 538.50
19	---	---	TP 538.50, TP 538.00
20	---	---	TP 537.94
21	---	---	TP 538.30, TP 537.80
22	PC 3+19.58	22.67' RT	TC 537.91
23	PT 3+30.82	6.06' RT	TC 537.84
24	PT 3+37.82	6.00' LT	TC 537.77
25	3+70.61	6.00' RT	TC 537.60
26	3+70.61	6.00' LT	TC 537.60



User: Hugo Trevino
 ROKW03.DWG
 SEP 30, 1992 2:11:20 P.M.