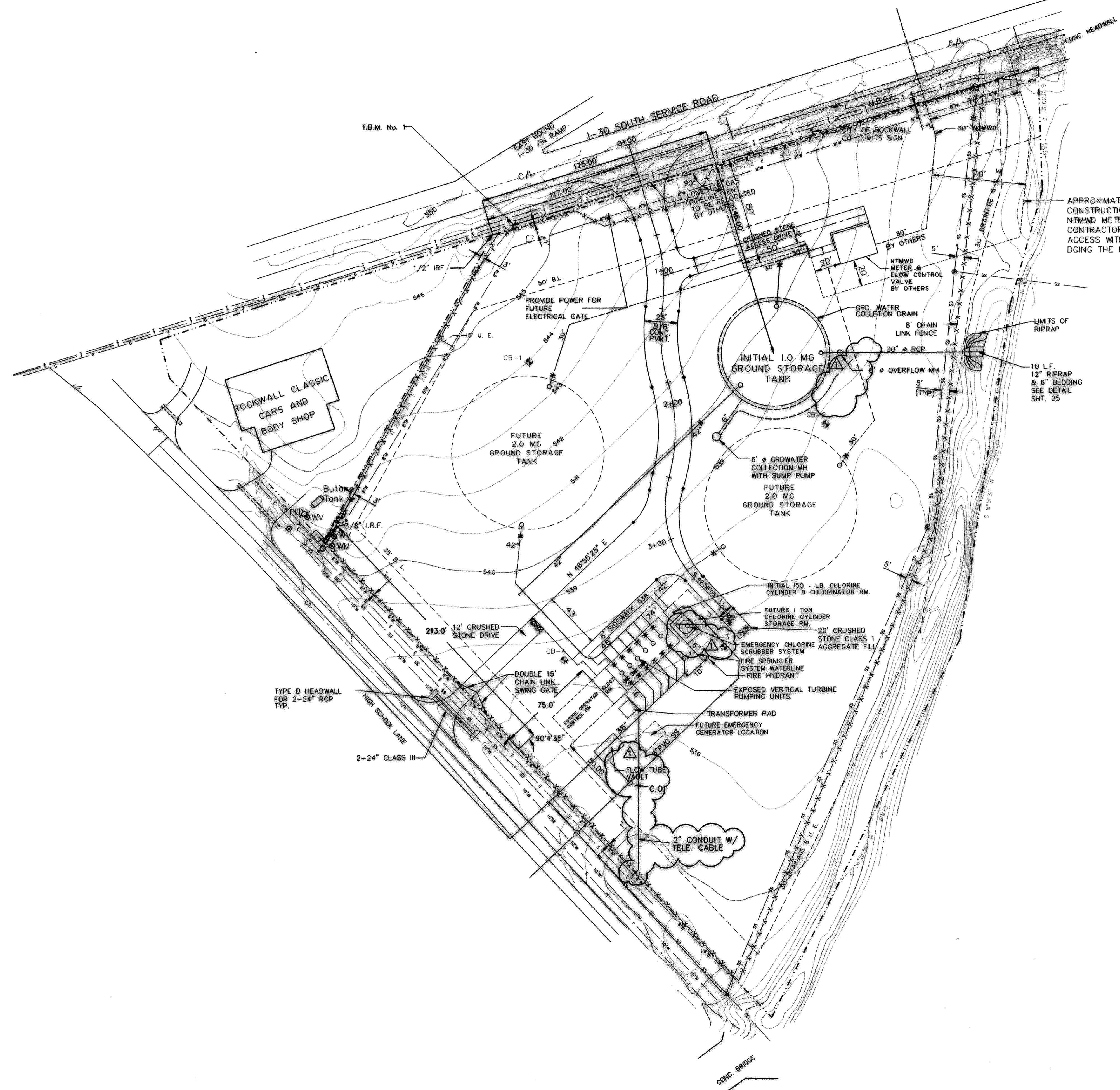


T.B.M. No. 1
 R.R SPIKE SET IN POWER
 POLE AT SOUTH SIDE OF
 I.H. 30 SERVICE ROAD, 180'
 EAST OF ROCKWALL CLASSIC
 CARS & BODY SHOP, ACCESS
 FROM I.H. 30 ENTRANCE RAMP.
 ELEV. 546.80



APPROXIMATE LIMITS OF
 CONSTRUCTION FOR THE
 NTMWD METER VAULT.
 CONTRACTOR SHALL COORDINATE
 ACCESS WITH THE CONTRACTOR
 DOING THE NTMWD WORK.

RECORD DRAWING
 BASED ON INFORMATION
 SUPPLIED BY THE CONTRACTOR
 DATE: 10/2/92 BY: LDS



THE SEAL APPEARING ON THIS
 DOCUMENT WAS AUTHORIZED BY
 LARRY D. SCHUELEIN, TEXAS
 P.E. No. 42247 ON NOV. 19, 1990

11-19-90

ACAD File 12
 User: Hugo Treviño
 ROKWING02.DWG
 SEP 30, 1992 2:04:54 P.M.

ACAD_LDS
 11/19/90 11:00:00 AM

10/2/92	DESIGNED:	JOB NO ROK89005
	DRAWN:	DATE 11/19/90
	TRACED:	SCALE 1"=40'
	CHECKED:	

REVISAS PER RECORD DRAWINGS

FREESE AND NICHOLS, INC.
 CONSULTING ENGINEERS
 FORT WORTH - ARLINGTON - AUSTIN, TEXAS

CITY OF ROCKWALL, TEXAS
 EASTSIDE PUMP STATION

SITE LAYOUT

SHEET
 2 OF 39