

Pacific Southwest Bank  
(Vol. 550, Page 176)

Pacific Southwest Bank  
(Vol. 550, Pg. 176)

The Evans Company  
(Vol. 121, Pg. 668)

Eastplex Industrial Park  
1-6-B  
F.F. = 570.86

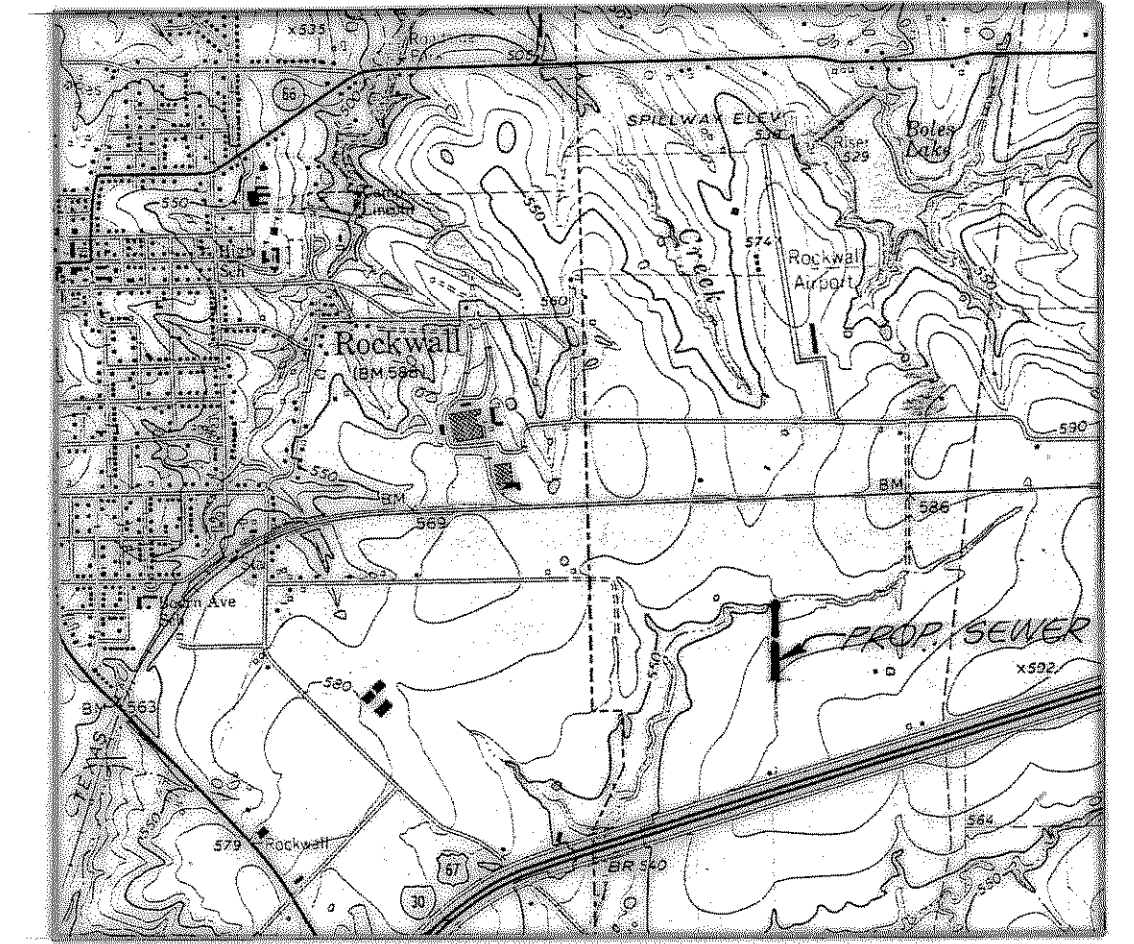
The Evans Company  
(Vol. 121, Pg. 668)

M.I.F. Joint Venture  
(Vol. 159, Pg. 242)

Rose Kathryn Cade  
(Vol. 71, Pg. 290)

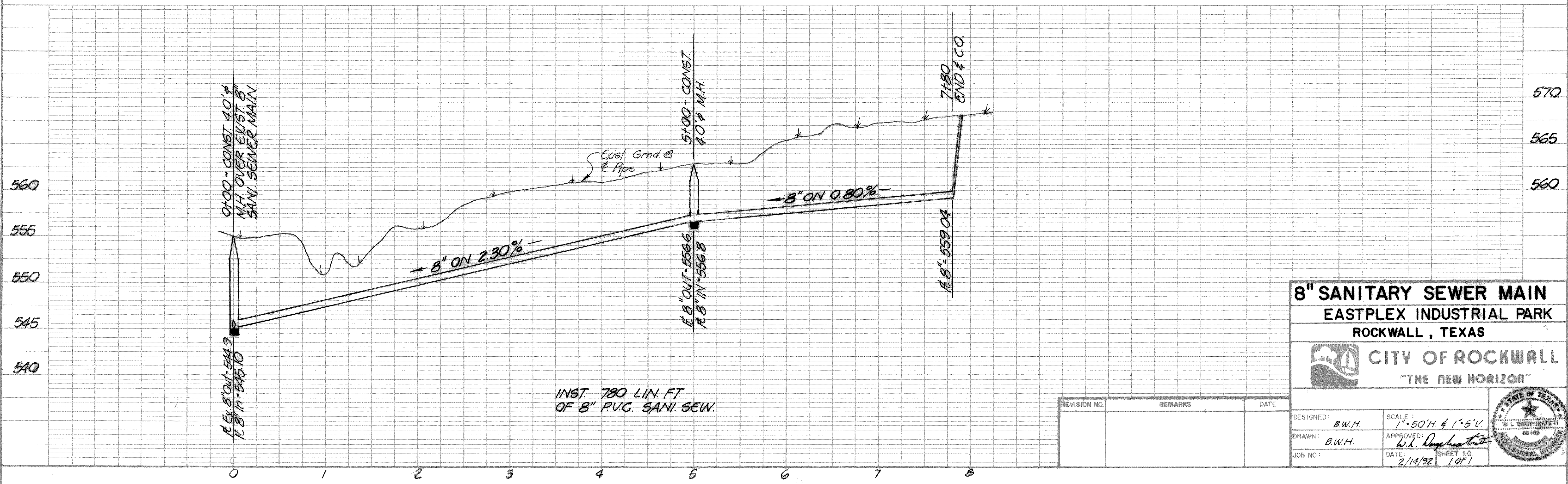
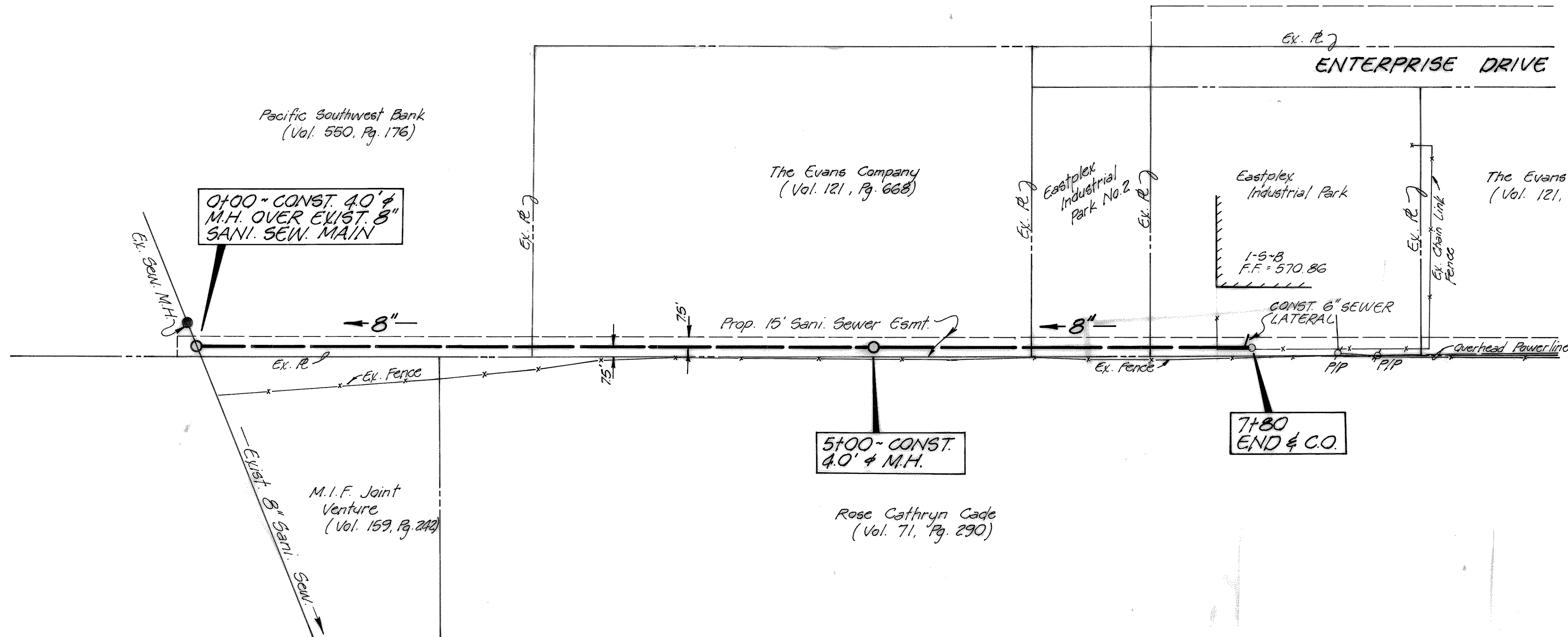
GENERAL NOTES

1. The proposed 8" sanitary sewer will be constructed in accordance with the City of Rockwall Construction Standards and Specifications.
2. Contractor to verify in the field the location of all existing utilities prior to construction. Information provided on this plan does not relieve the Contractor of full and total responsibility for the protection of existing utilities nor any damages caused by said Contractor during construction.



Location Map - 1" = 2000'

B.M. - Square in top of sidewalk  
@ S.E. Corner of existing bldg.  
Eastplex Industrial Park.  
ELEV. = 570.91



INST. 780 LIN. FT.  
OF 8" P.V.C. SANI. SEW.

<b>8" SANITARY SEWER MAIN</b>	
EASTPLEX INDUSTRIAL PARK	
ROCKWALL, TEXAS	
<b>CITY OF ROCKWALL</b> "THE NEW HORIZON"	
DESIGNED: B.W.H.	SCALE: 1" = 50'H & 1" = 5'V
DRAWN: B.W.H.	APPROVED: <i>W.A. Dougherty</i>
JOB NO:	DATE: 2/14/92 SHEET NO: 1 OF 1

REVISION NO.	REMARKS	DATE

