

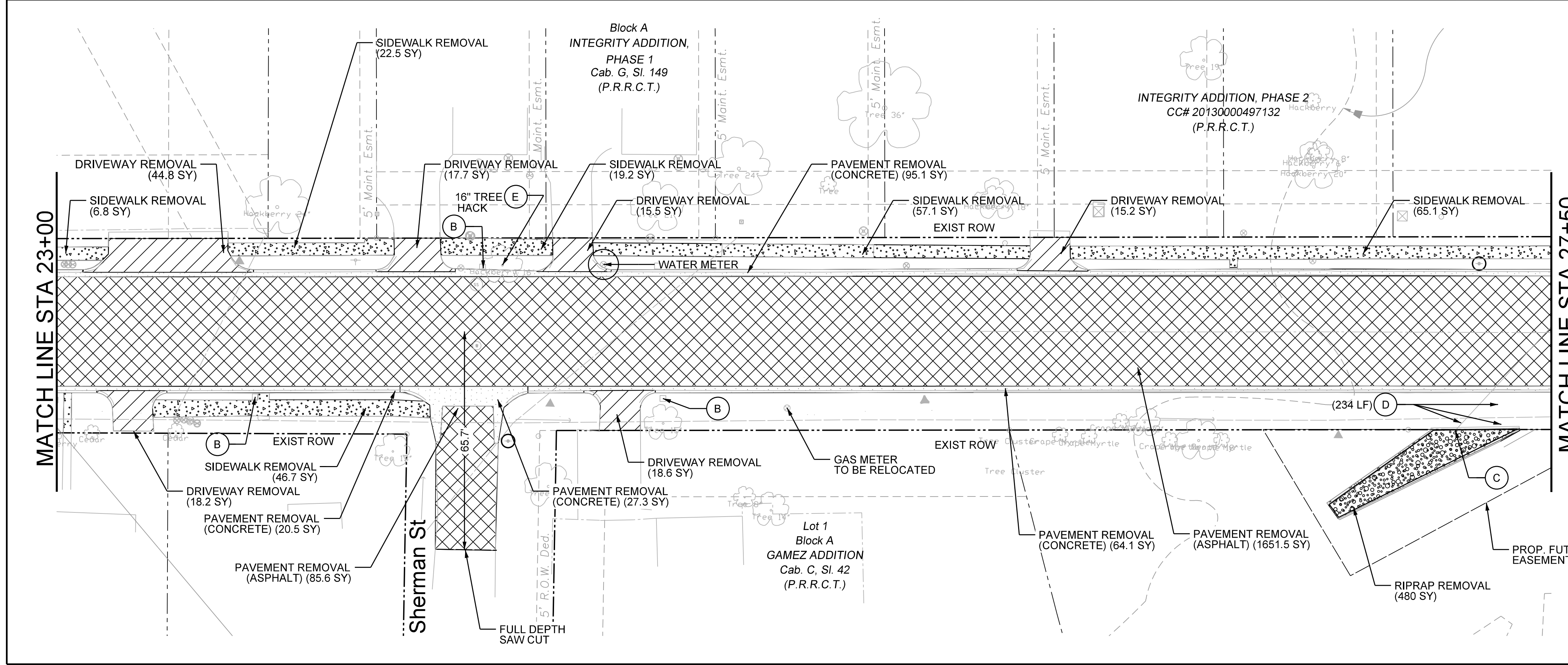
- REMOVAL LEGEND**
- DRIVEWAY REMOVAL
 - PAVEMENT REMOVAL (ASPHALT)
 - PAVEMENT REMOVAL (CONCRETE)
 - SIDEWALK REMOVAL
 - RIPRAP REMOVAL
 - FULL DEPTH SAWCUT LINE
- (A) REMOVE/ RELOCATE SIGNAL
 - (B) REMOVE/ REPLACE MAILBOX
 - (C) REMOVE HEADWALL
 - (D) REMOVE PIPE
 - (E) REMOVE TREE
 - (F) REMOVE INLET

NOTE: PROTECT ALL EXISTING TREES NOT LABELED FOR REMOVAL

CALL BEFORE YOU DIG!
 TEXAS ONE CALL PARTICIPANTS REQUEST 48 HOURS NOTICE BEFORE YOU DIG, DRILL, OR BLAST - STOP CALL

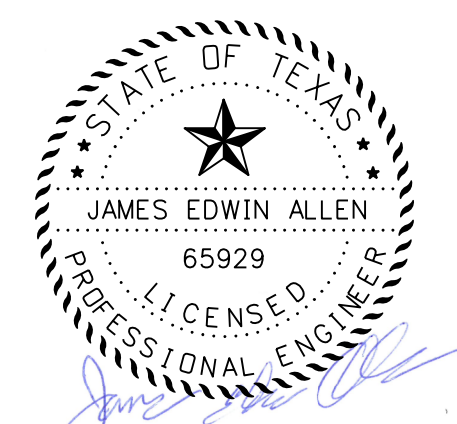
Texas One Call System
 1-800-DIG-TESS

UTILITY LOCATION NOTE:
 The location of existing utilities shown on these plans are approximate and based on existing plans and data furnished by utility companies. It is the responsibility of the contractor to verify the location and depth of all existing utilities that may conflict with construction. Call 1-800-344-8377 two working days prior to construction for on site locations. Any damage to existing utilities shall be repaired at contractor's expense, at no additional cost.



RECORD DRAWING
 THIS DRAWING IS A COMPILED COPY OF A COPY OF THE SEALED ENGINEERING DRAWING FOR THIS PROJECT, MODIFIED BY ADDENDA, CHANGE ORDERS AND INFORMATION FURNISHED BY THE CONTRACTOR. THE INFORMATION SHOWN ON THIS RECORD DRAWING THAT WAS PROVIDED BY THE CONTRACTOR OR OTHERS NOT ASSOCIATED WITH THE DESIGN ENGINEER CANNOT BE VERIFIED FOR ACCURACY OR COMPLETENESS. THE ORIGINAL SEALED DRAWINGS ARE ON FILE AT THE OFFICE OF E.J.E.S., INC., TBP# FIRM REGISTRATION NO. 2488

James Allen
 James Allen, P.E., TX License No. 65929 Date: JULY 26, 2019



EJES INCORPORATED
 12655 N Central Expy, Suite # 500, Dallas, Texas 75243.
 Tel # 214-343-1210, Fax # 214-343-3885
 FIRM REGISTRATION No: F-2488

REMOVAL PLAN						
E. BOYDSTUN AVE.						
FROM S. GOLIAD ST TO S. CLARK ST						
PUBLIC WORKS DEPARTMENT						
CITY OF ROCKWALL, TEXAS						
DESIGN	DRAWN	DATE	SCALE	NOTES	FILE	SHEET NO.
EJES	EJES	MAY 2017	1"=20' H			8