

- NOTE:**
- EXISTING VALVE STACK TO BE REMOVED. VALVE WILL BE CLOSED AND ABANDONED.
 - THE LOCATION OF WATER AND WASTEWATER SERVICES SHOWN ARE APPROXIMATE. THE CONTRACTOR SHALL VERIFY ALL SERVICE LOCATIONS PRIOR TO CONSTRUCTION. ALL VVV LINES TO BE REPLACED SHALL BE VIDEO INSPECTED BY THE CONTRACTOR TO DETERMINE SERVICE LOCATIONS (NO SEPERATE PAY). NEW VVV LATERALS SHALL BE INSTALLED TO THE ROW LINE FOR ALL LOTS WITH CLEANOUT.
 - REPLACE ALL WATER SERVICES AND CONNECT TO 12" WL. BOXES AND EXIST METERS TO REMAIN.

NOTE:
SEE SHEETS 61 - 63 FOR WATER PROFILE

CALL BEFORE YOU DIG!
TEXAS ONE CALL PARTICIPANTS REQUEST 48 HOURS NOTICE BEFORE YOU DIG, DRILL, OR BLAST - STOP CALL

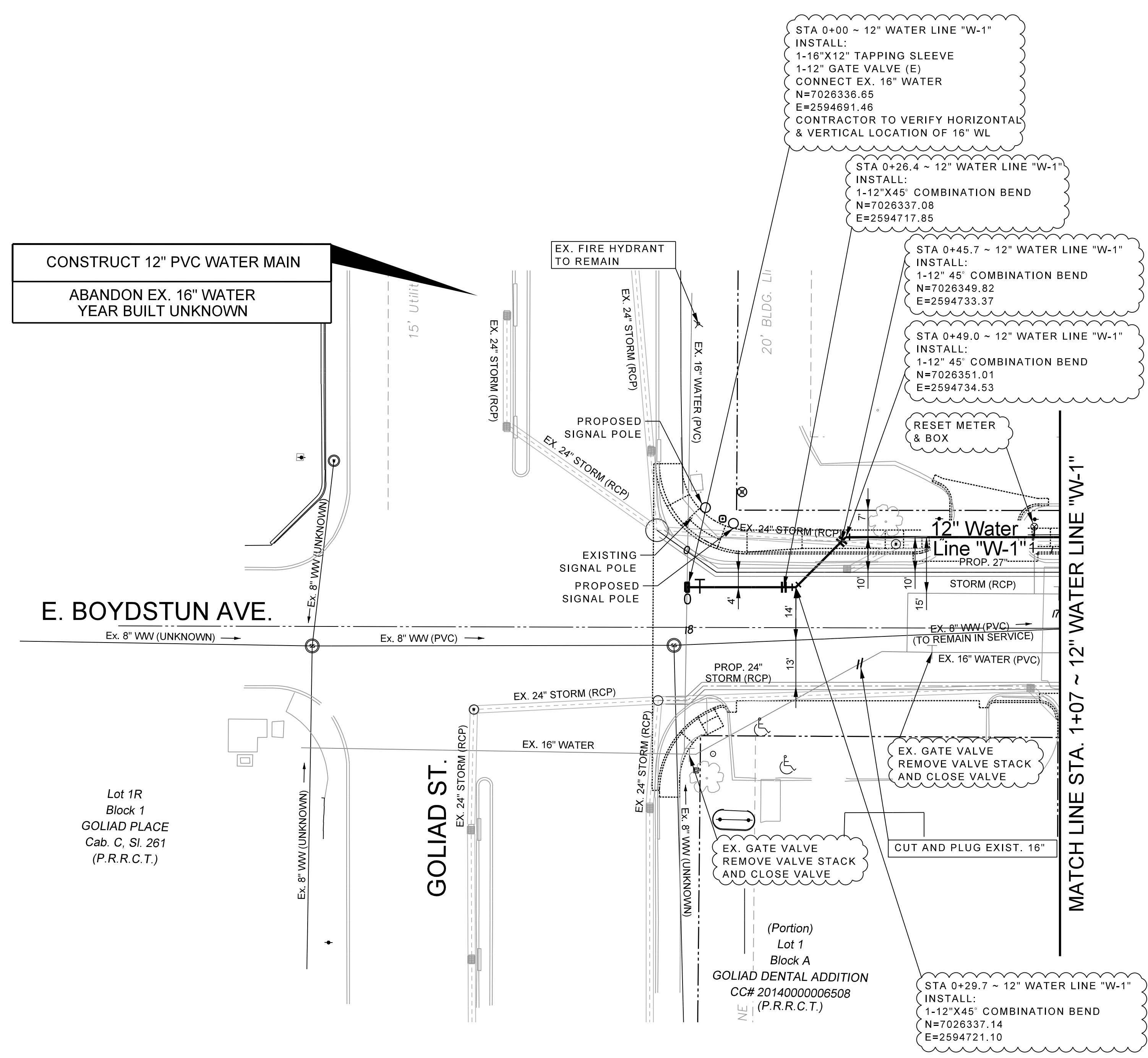
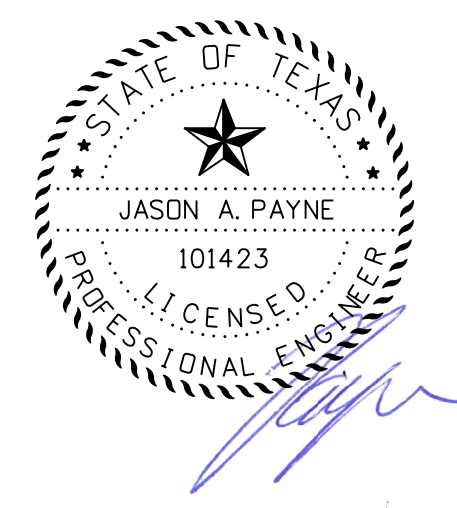
Texas One Call System
1-800-DIG-TESS

UTILITY LOCATION NOTE:
The location of existing utilities shown on these plans are approximate and based on existing plans and data furnished by utility companies. It is the responsibility of the contractor to verify the location and depth of all existing utilities that may conflict with construction. Call 1-800-344-8377 two working days prior to construction for site locations. Any damage to existing utilities shall be repaired at contractor's expense, at no additional cost.

- N 7026291.357 E 2594699.299 ELEV= 583.650 MON
- N 7026304.738 E 2594701.100 ELEV= 583.119 CIRST

RECORD DRAWING
THIS DRAWING IS A COMPILED COPY OF A COPY OF THE SEALED ENGINEERING DRAWING FOR THIS PROJECT, MODIFIED BY ADDENDA, CHANGE ORDERS AND INFORMATION FURNISHED BY THE CONTRACTOR. THE INFORMATION SHOWN ON THIS RECORD DRAWING THAT WAS PROVIDED BY THE CONTRACTOR OR OTHERS NOT ASSOCIATED WITH THE DESIGN ENGINEER CANNOT BE VERIFIED FOR ACCURACY OR COMPLETENESS. THE ORIGINAL SEALED DRAWINGS ARE ON FILE AT THE OFFICE OF EJES, INC. TBP# FIRM REGISTRATION No. 2488

July 28, 2019
Jason A. Payne, P.E., TX License No. 55223 Date



CONSTRUCT 12" PVC WATER MAIN
ABANDON EX. 16" WATER
YEAR BUILT UNKNOWN

E. BOYDSTUN AVE.

Lot 1R
Block 1
GOLIAD PLACE
Cab. C, Sl. 261
(P.R.R.C.T.)

GOLIAD ST.

(Portion)
Lot 1
Block A
GOLIAD DENTAL ADDITION
CC# 2014000006508
(P.R.R.C.T.)

MATCH LINE STA. 1+07 ~ 12" WATER LINE "W-1"

EJES INCORPORATED
12655 N Central Expy, Suite # 500, Dallas, Texas 75243.
Tel # 214-343-1210, Fax # 214-343-3885
FIRM REGISTRATION No: F-2488

WATER & WASTEWATER
E. BOYDSTUN AVE.
FROM S. GOLIAD ST TO S. CLARK ST
PUBLIC WORKS DEPARTMENT
CITY OF ROCKWALL, TEXAS

DESIGN	DRAWN	DATE	SCALE	NOTES	FILE	SHEET NO.
EJES	EJES	MAY 2017	1"=20' H 1"= 5' V			59