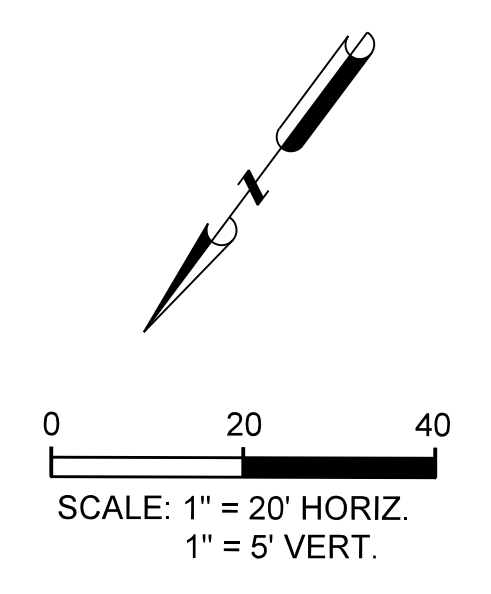


PROPOSED CONCRETE RIP-RAP				
POINT NO	NORTHING	EASTING	TOP OF RIP-RAP	TOP OF CURB
US-1	7,026,300.77	2,596,324.76	530.73	531.73
US-2	7,026,325.00	2,596,357.79	529.50	530.50
US-3	7,026,325.61	2,596,392.69	529.50	530.50
US-4	7,026,296.50	2,596,327.92	530.80	531.80
US-5	7,026,298.63	2,596,326.34	530.76	-



- NOTE:
- SEE BOYDSTUN HYDRAULIC STUDY FOR FURTHER INFORMATION.
 - SEE DRAINAGE PLAN AND PROFILES FOR FURTHER DETAILS.
 - SEE DRAINAGE PROFILE SHEET FOR PROPOSED HANDRAIL DETAILS.
 - SEE DRAINAGE AREA MAP FOR 100 YR EXIST AND PROP FLOODPLAIN.
 - SEE PW1 AND BCS STANDARD FOR WINGWALL DETAILS.

CALL BEFORE YOU DIG!
 TEXAS ONE CALL PARTICIPANTS REQUEST 48 HOURS NOTICE BEFORE YOU DIG, DRILL, OR BLAST - STOP CALL

Texas One Call System
 1-800-DIG-TESS

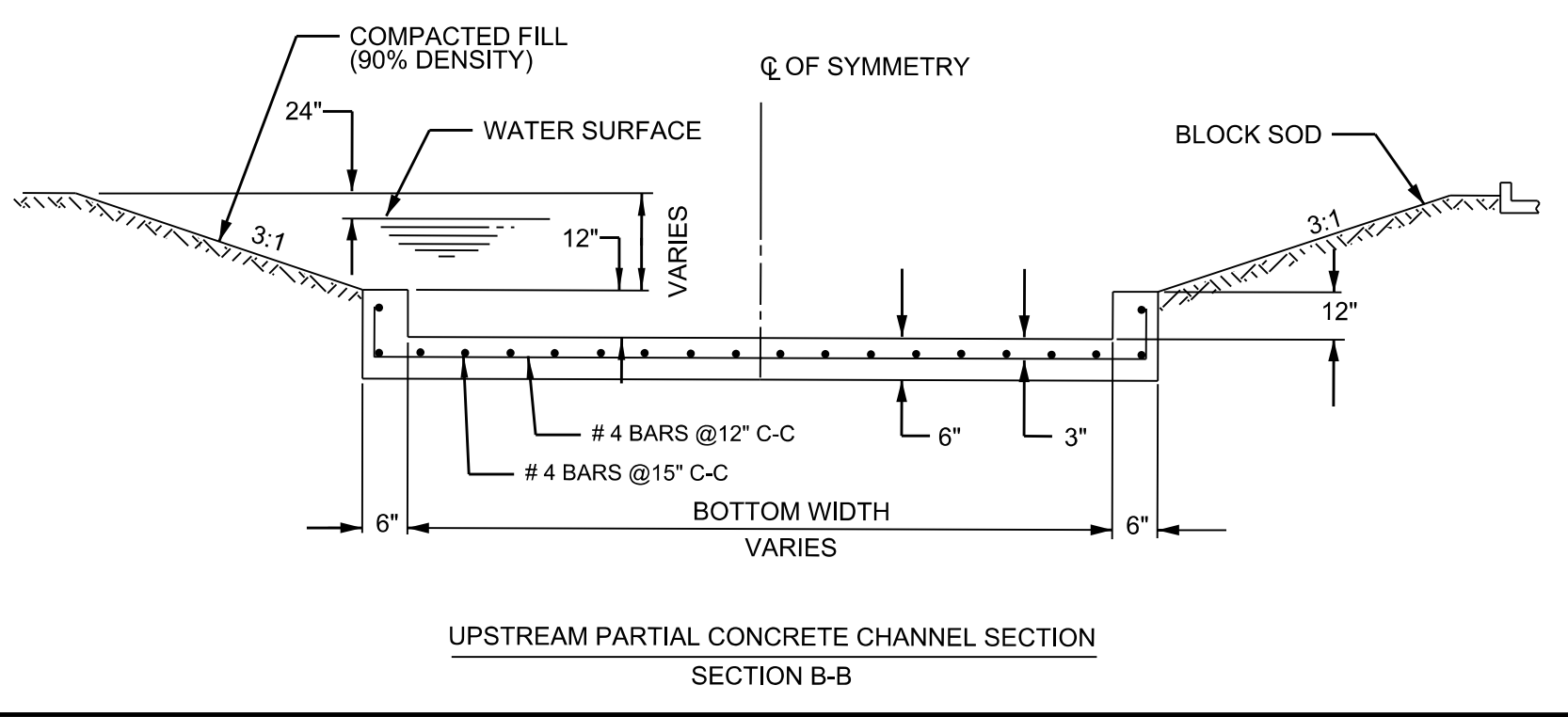
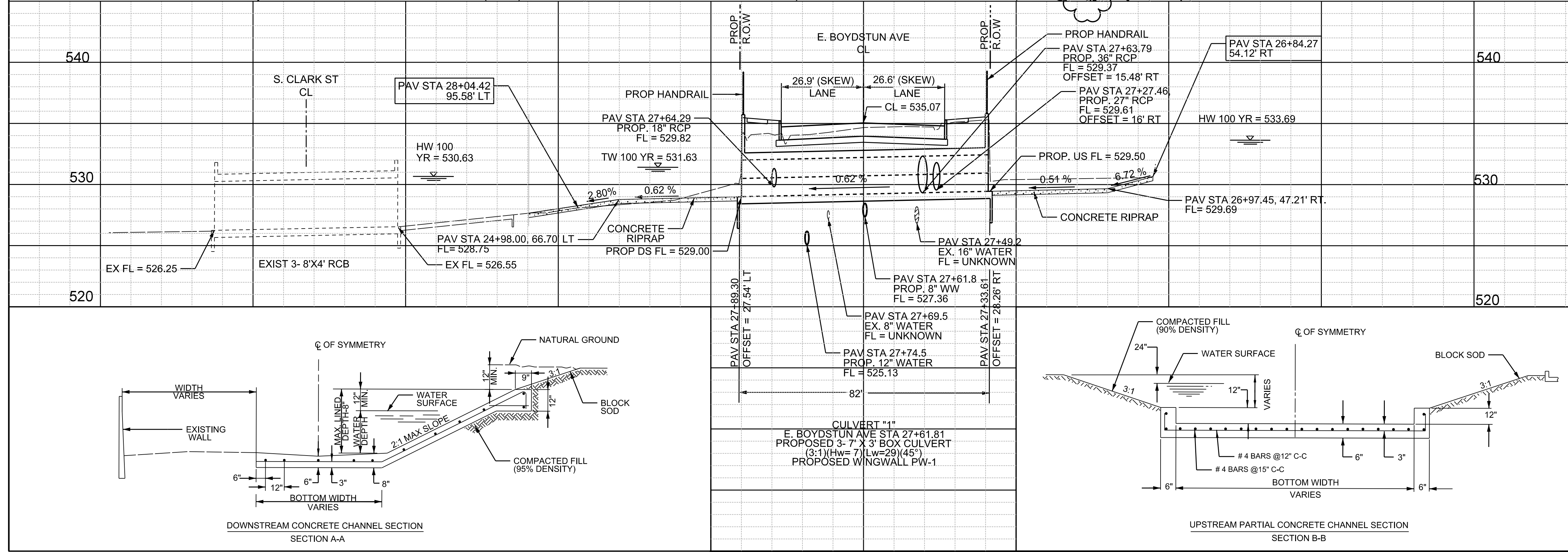
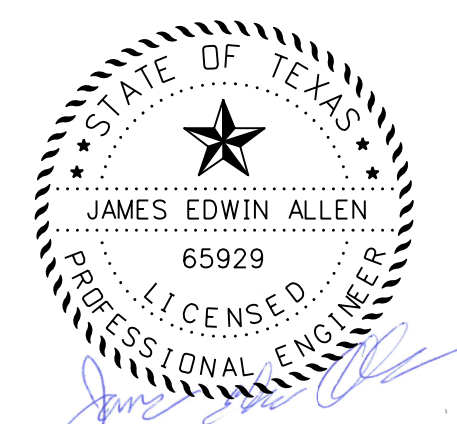
UTILITY LOCATION NOTE:
 The location of existing utilities shown on these plans are approximate and based on existing plans and data furnished by utility companies. It is the responsibility of the contractor to verify the location and depth of all existing utilities that may conflict with construction. Call 1-800-344-8377 two working days prior to construction for on site locations. Any damage to existing utilities shall be repaired at contractor's expense, at no additional cost.

PROPOSED RIP-RAP			
POINT NO	NORTHING	EASTING	TOP OF RIP-RAP
DS-1	7,026,381.71	2,596,412.55	529.00
DS-2	7,026,452.10	2,596,438.38	527.61
DS-3	7,026,448.51	2,596,449.61	527.63
DS-4	7,026,438.49	2,596,459.98	527.66
DS-5	7,026,438.98	2,596,459.72	532.25
DS-6	7,026,383.64	2,596,455.23	533.00
DS-7	7,026,298.63	2,596,326.34	529.00

RECORD DRAWING
 THIS DRAWING IS A COMPILATION OF A COPY OF THE SEALED ENGINEERING DRAWING FOR THIS PROJECT, MODIFIED BY ADDENDA, CHANGE ORDERS AND INFORMATION FURNISHED BY THE CONTRACTOR. THE INFORMATION SHOWN ON THE RECORD DRAWING THAT WAS PROVIDED BY THE CONTRACTOR OR OTHERS NOT ASSOCIATED WITH THE DESIGN ENGINEER CANNOT BE VERIFIED FOR ACCURACY OR COMPLETENESS. THE ORIGINAL SEALED DRAWINGS ARE ON FILE AT THE OFFICE OF EJES, INC. TBPE FIRM REGISTRATION No. 2488

James Allen JULY 28, 2019
 James Allen, P.E., TX License No. 65929

AS BUILT: 8-12-2019



EJES INCORPORATED
 12655 N Central Expy, Suite # 500, Dallas, Texas 75243.
 Tel # 214-343-1210, Fax # 214-343-3885
 FIRM REGISTRATION No: F-2488

CULVERT LAYOUT SHEET
 E. BOYDSTUN AVE.
 FROM S. GOLIAD ST TO S. CLARK ST
 PUBLIC WORKS DEPARTMENT
 CITY OF ROCKWALL, TEXAS

DESIGN	DRAWN	DATE	SCALE	NOTES	FILE	SHEET NO.
EJES	EJES	MAY 2017	1"=20' H 1"=5' V			57