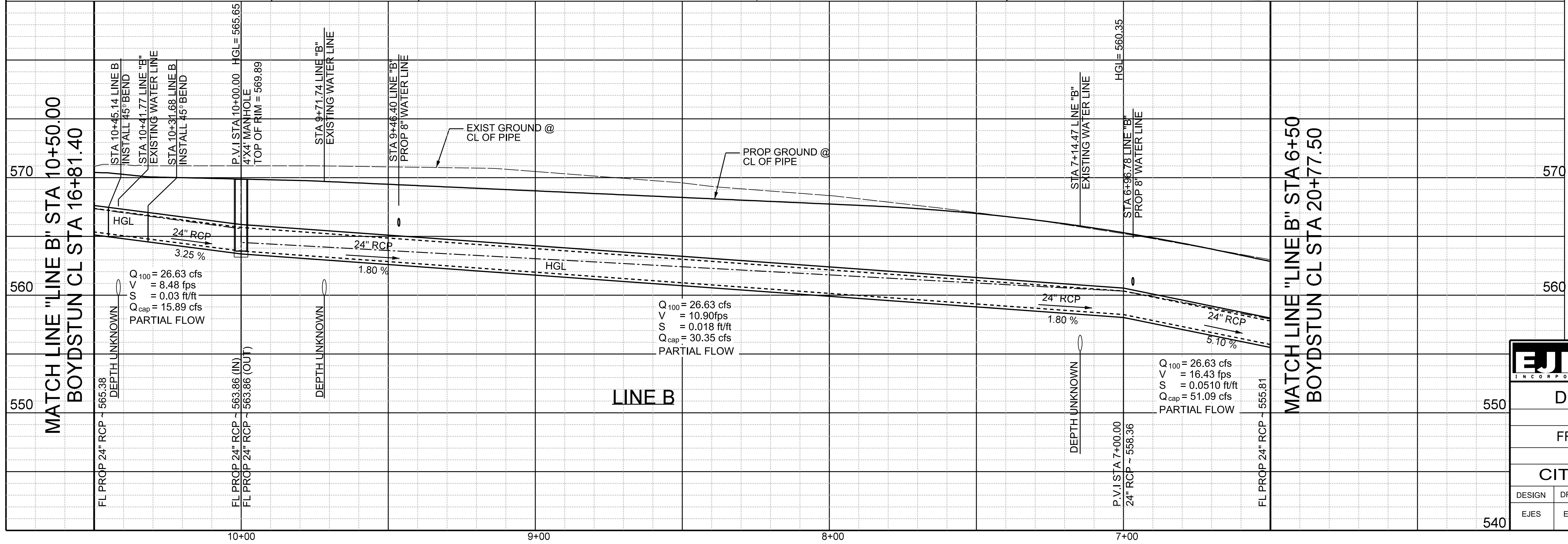


**CALL BEFORE YOU DIG!**  
TEXAS ONE CALL PARTICIPANTS REQUEST  
48 HOURS NOTICE BEFORE YOU DIG, DRILL,  
OR BLAST - STOP CALL

**Texas One Call System**  
1-800-DIG-TESS

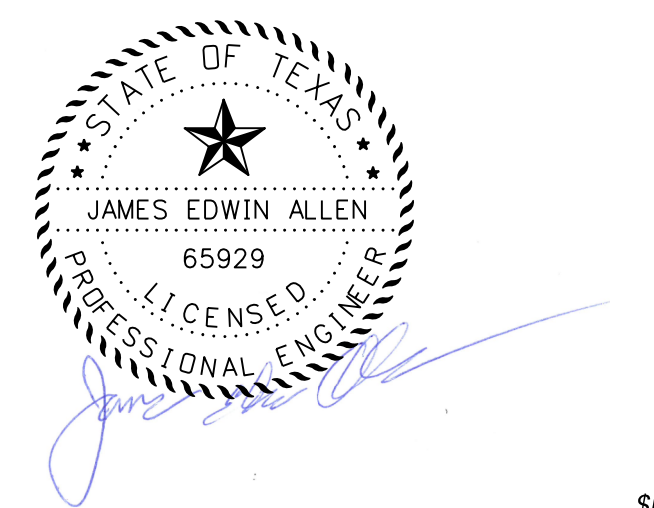
**UTILITY LOCATION NOTE:**  
The location of existing utilities shown on these plans are approximate and based on existing plans and data furnished by utility companies. It is the responsibility of the contractor to verify the location and depth of all existing utilities that may conflict with construction. Call 1-800-344-8377 two working days prior to construction for on site locations. Any damage to existing utilities shall be repaired at contractor's expense, at no additional cost.

**NOTE:**  
1. CONTRACTOR TO INSTALL CITY FURNISH INLET MARKERS "NO DUMPING" ON ALL INLETS



**RECORD DRAWING**  
THIS DRAWING IS A COMBINATION OF A COPY OF THE SEALED ENGINEERING DRAWING FOR THIS PROJECT, MODIFIED BY ADDENDA, CHANGE ORDERS AND INFORMATION FURNISHED BY THE CONTRACTOR. THE INFORMATION SHOWN ON THIS RECORD DRAWING THAT WAS PROVIDED BY THE CONTRACTOR OR OTHERS NOT ASSOCIATED WITH THE DESIGN ENGINEER CANNOT BE VERIFIED FOR ACCURACY OR COMPLETENESS. THE ORIGINAL SEALED DRAWINGS ARE ON FILE AT THE OFFICE OF E.J.E.S., INC., TBP# FIRM REGISTRATION NO. 2488

James Allen, P.E., TX License No. 65929  
Date: JULY 26, 2019



**EJES** INCORPORATED  
12655 N Central Expy, Suite # 500, Dallas, Texas 75243.  
Tel # 214-343-1210, Fax # 214-343-3885  
FIRM REGISTRATION No: F-2488

**DRAINAGE PLAN & PROFILE**  
E. BOYDSTUN AVE.  
FROM S. GOLIAD ST TO S. CLARK ST  
PUBLIC WORKS DEPARTMENT  
CITY OF ROCKWALL, TEXAS

DESIGN	DRAWN	DATE	SCALE	NOTES	FILE	SHEET NO.
EJES	EJES	MAY 2017	1"=20' H 1"= 5' V			52