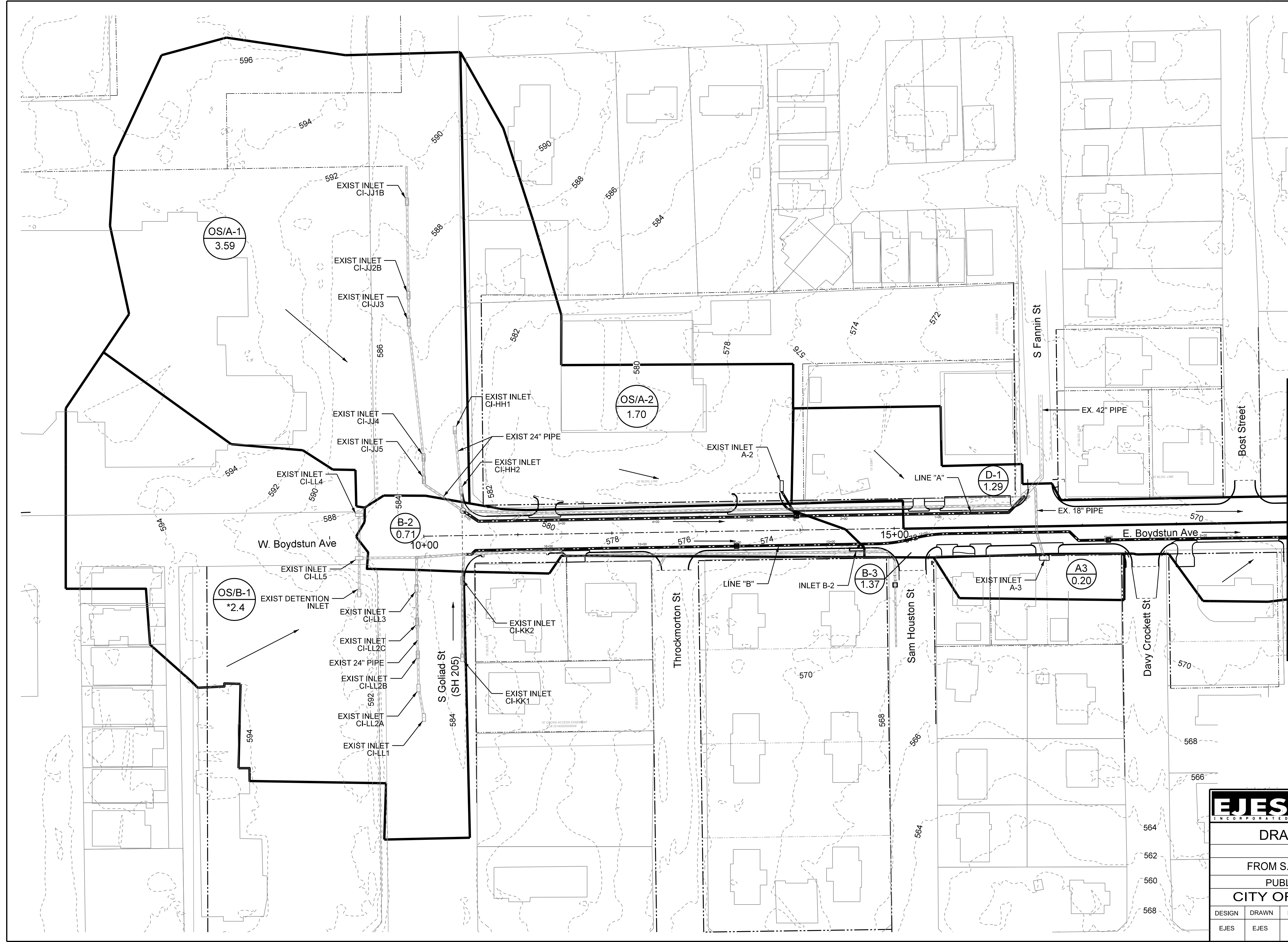


- LEGEND**
- AREA (AC)
 - FLOW
 - CONTOURS
 - DRAINAGE BOUNDARIES
 - INLET DIVIDE

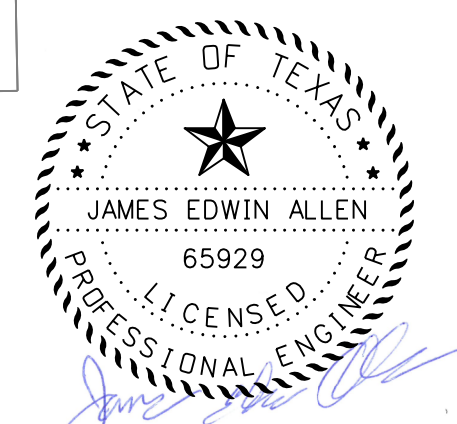
***NOTE:**
 AREA OS/B-1 IS 3.03 AC PER (TXDOT).
 THE FINAL AREA USED IS 2.4 AC.
 THIS IS THE EFFECTIVE AREA DUE TO
 THE DETENTION IN THE CHURCH
 PARKING LOT.



MATCH LINE A

RECORD DRAWING
 THIS DRAWING IS A COMPILATION OF A COPY OF THE SEALED
 ENGINEERING DRAWINGS FOR THIS PROJECT, MODIFIED BY ADDENDA,
 CHANGE ORDERS AND INFORMATION FURNISHED BY THE CONTRACTOR.
 THE INFORMATION SHOWN ON THE RECORD DRAWING THAT WAS
 PROVIDED BY THE CONTRACTOR OR OTHERS NOT ASSOCIATED WITH
 THE DESIGN ENGINEER CANNOT BE VERIFIED FOR ACCURACY OR
 COMPLETENESS. THE ORIGINAL SEALED DRAWINGS ARE ON FILE AT THE
 OFFICE OF E.J.E.S., INC., TYPE FIRM REGISTRATION NO. 2488

JULY 28, 2019
 Date
 James Allen, P.E., TX License No. 65929



EJES INCORPORATED
 12655 N Central Expy, Suite # 500, Dallas, Texas 75243.
 Tel # 214-343-1210, Fax # 214-343-3885
 FIRM REGISTRATION No: F-2488

DRAINAGE AREA MAP						
E. BOYDSTUN AVE.						
FROM S. GOLIAD ST TO S. CLARK ST						
PUBLIC WORKS DEPARTMENT						
CITY OF ROCKWALL, TEXAS						
DESIGN	DRAWN	DATE	SCALE	NOTES	FILE	SHEET NO.
EJES	EJES	MAY 2017	1"=50' H			46