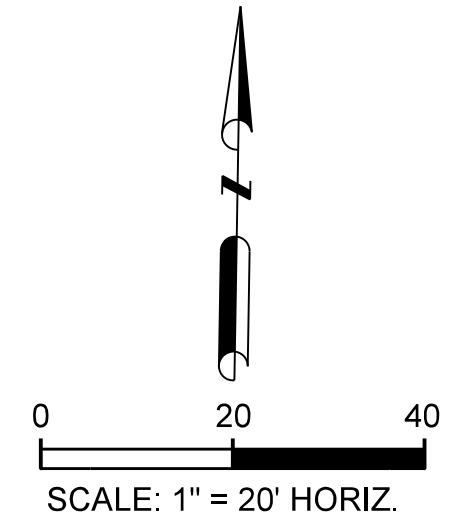


STAGE 2 PHASE 2 NOTES:

- (AA) HIGH EARLY STRENGTH CONCRETE MAY BE USED IN THESE AREAS AND SHALL BE SUBSIDIARY TO THE CONCRETE PAVEMENT AND CONCRETE DRIVEWAY BID ITEMS. PHASE DRIVEWAY CONSTRUCTION SUCH THAT ACCESS IS AVAILABLE AT ALL TIMES.
- (BB) HIGH EARLY STRENGTH CONCRETE MAY BE USED FOR DRIVEWAY CONSTRUCTION AND SHALL BE SUBSIDIARY TO THE CONCRETE DRIVEWAY BID ITEM. THE CONTRACTOR SHALL COORDINATE WITH THE PROPERTY OWNER TO SCHEDULE DRIVEWAY CONSTRUCTION.

TCP LEGEND

- CONSTRUCTION THIS STAGE
- CONSTRUCTION PREVIOUS STAGE
- UTILITY CONSTRUCTION
- (A) 24" WK ZN NON REMOVABLE (SLD) (W)
- (B) 24" WK ZN REMOVABLE (SLD) (W)
- (C) EXIST PAV MRKS
- ARROW BOARD
- SIGN
- VERTICAL PANEL (30' C-C)
- TYPE III BARRICADE
- PLASTIC DRUMS
- TRAFFIC FLOW DIRECTION



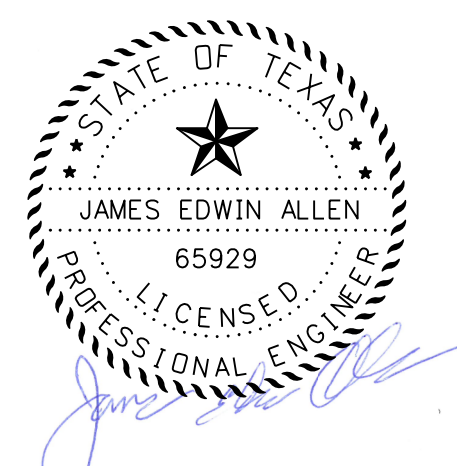
CALL BEFORE YOU DIG!  
 TEXAS ONE CALL PARTICIPANTS REQUEST 48 HOURS NOTICE BEFORE YOU DIG, DRILL, OR BLAST - STOP CALL  
 Texas One Call System  
 1-800-DIG-TESS

UTILITY LOCATION NOTE:  
 The location of existing utilities shown on these plans are approximate and based on existing plans and data furnished by utility companies. It is the responsibility of the contractor to verify the location and depth of all existing utilities that may conflict with construction. Call 1-800-344-8377 two working days prior to construction for on site locations. Any damage to existing utilities shall be repaired at contractor's expense, at no additional cost.

2. N 7026304.738 E 2594701.100 ELEV= 583.119 CIRST
3. N 7026315.130 E 2595264.068 ELEV= 571.525 CIRST
4. N 7026371.130 E 2595879.811 ELEV= 555.166 60DST

RECORD DRAWING  
 THIS DRAWING IS A COMPILATION OF A COPY OF THE SEALED ENGINEERING DRAWING FOR THIS PROJECT, MODIFIED BY ADDENDA, CHANGE ORDERS AND INFORMATION FURNISHED BY THE CONTRACTOR. THE INFORMATION SHOWN ON THE RECORD DRAWING THAT WAS PROVIDED BY THE CONTRACTOR OR OTHERS NOT ASSOCIATED WITH THE DESIGN ENGINEER CANNOT BE VERIFIED FOR ACCURACY OR COMPLETENESS. THE ORIGINAL SEALED DRAWINGS ARE ON FILE AT THE OFFICE OF EJES, INC., TBPE FIRM REGISTRATION No. 2488  
 James Allen, P.E., TX License No. 65929 Date: JULY 26, 2018

1 ADDENDUM 1: 9-22-2017



**EJES** INCORPORATED  
 12655 N Central Expy, Suite # 500, Dallas, Texas 75243  
 Tel # 214-343-1210, Fax # 214-343-3885  
 FIRM REGISTRATION No: F-2488

TCP STAGE 2 PHASE 2						
E. BOYDSTUN AVE.						
FROM S. GOLIAD ST TO S. CLARK ST						
PUBLIC WORKS DEPARTMENT						
CITY OF ROCKWALL, TEXAS						
DESIGN	DRAWN	DATE	SCALE	NOTES	FILE	SHEET NO.
EJES	EJES	MAY 2017	1"=20' H			37

