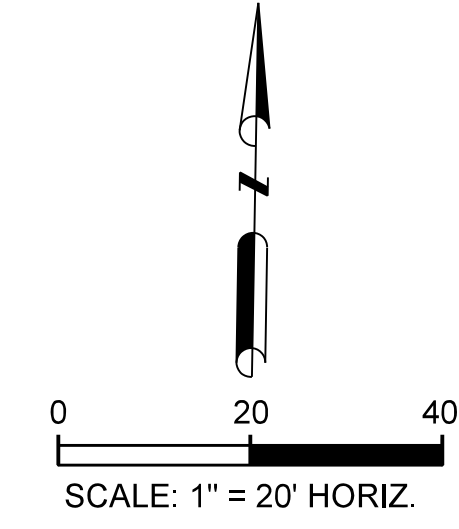
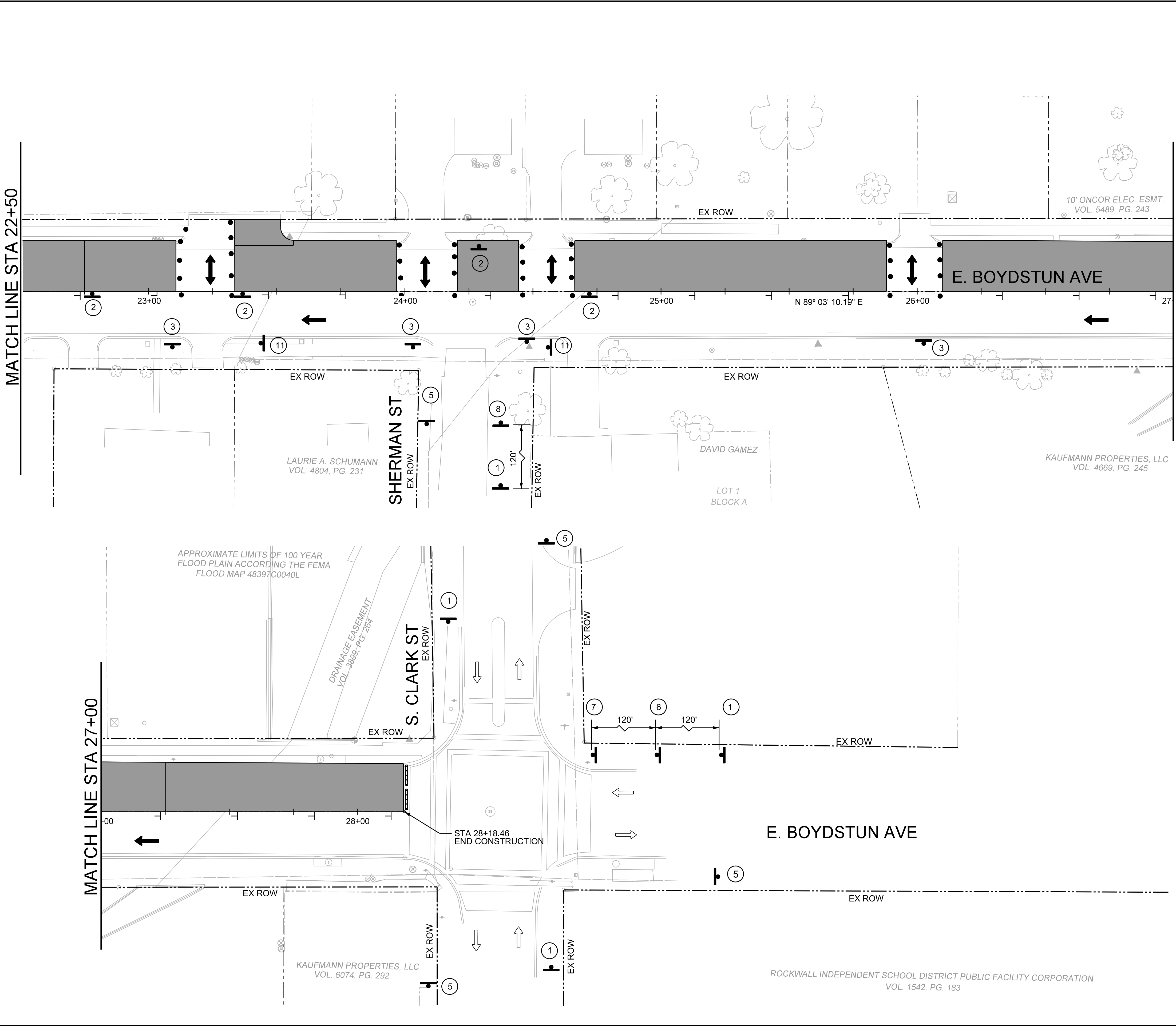


MATCHLINE STA 22+50

MATCHLINE STA 27+00



TCP LEGEND

- CONSTRUCTION THIS STAGE
- CONSTRUCTION PREVIOUS STAGE
- UTILITY CONSTRUCTION
- 24" WK ZN NON REMOVABLE (SLD) (W)
- 24" WK ZN REMOVABLE (SLD) (W)
- EXIST PAV MRKS
- ARROW BOARD
- SIGN
- VERTICAL PANEL (30' C-C)
- TYPE III BARRICADE
- PLASTIC DRUMS
- TRAFFIC FLOW DIRECTION

**CALL BEFORE YOU DIG!**  
 TEXAS ONE CALL PARTICIPANTS REQUEST  
 48 HOURS NOTICE BEFORE YOU DIG, DRILL,  
 OR BLAST - STOP CALL

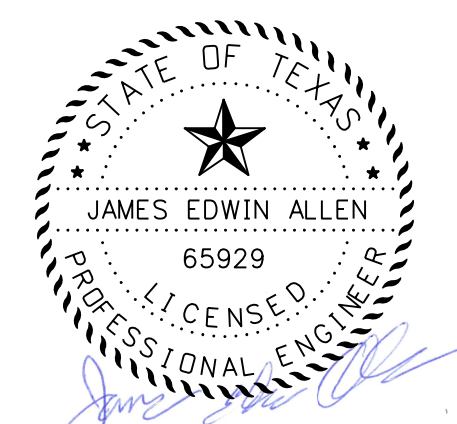
**Texas One Call System**  
 1-800-DIG-TESS

**UTILITY LOCATION NOTE:**  
 The location of existing utilities shown on these plans are approximate and based on existing plans and data furnished by utility companies. It is the responsibility of the contractor to verify the location and depth of all existing utilities that may conflict with construction. Call 1-800-344-8377 two working days prior to construction for on site locations. Any damage to existing utilities shall be repaired at contractor's expense, at no additional cost.

- 4. N 7026371.130 E 2595879.811 ELEV= 555.166 60DST
- 5. N 7026321.620 E 2596327.520 ELEV= 534.835 60DST

**RECORD DRAWING**  
 THIS DRAWING IS A COMPILED COPY OF THE SEALED ENGINEERING DRAWING FOR THIS PROJECT, MODIFIED BY ADDENDA, CHANGE ORDERS AND INFORMATION FURNISHED BY THE CONTRACTOR. THE INFORMATION SHOWN ON THIS RECORD DRAWING THAT WAS PROVIDED BY THE CONTRACTOR OR OTHERS NOT ASSOCIATED WITH THE DESIGN ENGINEER CANNOT BE VERIFIED FOR ACCURACY OR COMPLETENESS. THE ORIGINAL SEALED DRAWINGS ARE ON FILE AT THE OFFICE OF E.JES, INC., TBE FIRM REGISTRATION No. 2488

*James Allen*  
 James Allen, P.E., TX License No. 65929      JULY 26, 2019      Date



**EJES** INCORPORATED  
 12655 N Central Expy, Suite # 500, Dallas, Texas 75243.  
 Tel # 214-343-1210, Fax # 214-343-3885  
 FIRM REGISTRATION No: F-2488

<b>TCP STAGE 2 PHASE 1</b>						
<b>E. BOYDSTUN AVE.</b>						
<b>FROM S. GOLIAD ST TO S. CLARK ST</b>						
<b>PUBLIC WORKS DEPARTMENT</b>						
<b>CITY OF ROCKWALL, TEXAS</b>						
DESIGN	DRAWN	DATE	SCALE	NOTES	FILE	SHEET NO.
EJES	EJES	MAY 2017	1"=20' H			<b>35</b>

ROCKWALL INDEPENDENT SCHOOL DISTRICT PUBLIC FACILITY CORPORATION  
 VOL. 1542, PG. 183

APPROXIMATE LIMITS OF 100 YEAR  
 FLOOD PLAIN ACCORDING TO THE FEMA  
 FLOOD MAP 48397C0040L

DRAINAGE EASEMENT  
 VOL. 3808, PG. 284

LAURIE A. SCHUMANN  
 VOL. 4804, PG. 231

SHERMAN ST  
 EX ROW

DAVID GAMEZ  
 LOT 1  
 BLOCK A

KAUFMANN PROPERTIES, LLC  
 VOL. 4669, PG. 245

MATCHLINE STA 27+00

S. CLARK ST  
EX ROW

E. BOYDSTUN AVE

KAUFMANN PROPERTIES, LLC  
 VOL. 6074, PG. 292

STA 28+18.46  
 END CONSTRUCTION