

TCP LEGEND

- CONSTRUCTION THIS STAGE
- CONSTRUCTION PREVIOUS STAGE
- UTILITY CONSTRUCTION
- 24" WK ZN NON REMOVABLE (SLD) (W)
- 24" WK ZN REMOVABLE (SLD) (W)
- EXIST PAV MRKS
- ARROW BOARD
- SIGN
- VERTICAL PANEL (30' C-C)
- TYPE III BARRICADE
- PLASTIC DRUMS
- TRAFFIC FLOW DIRECTION

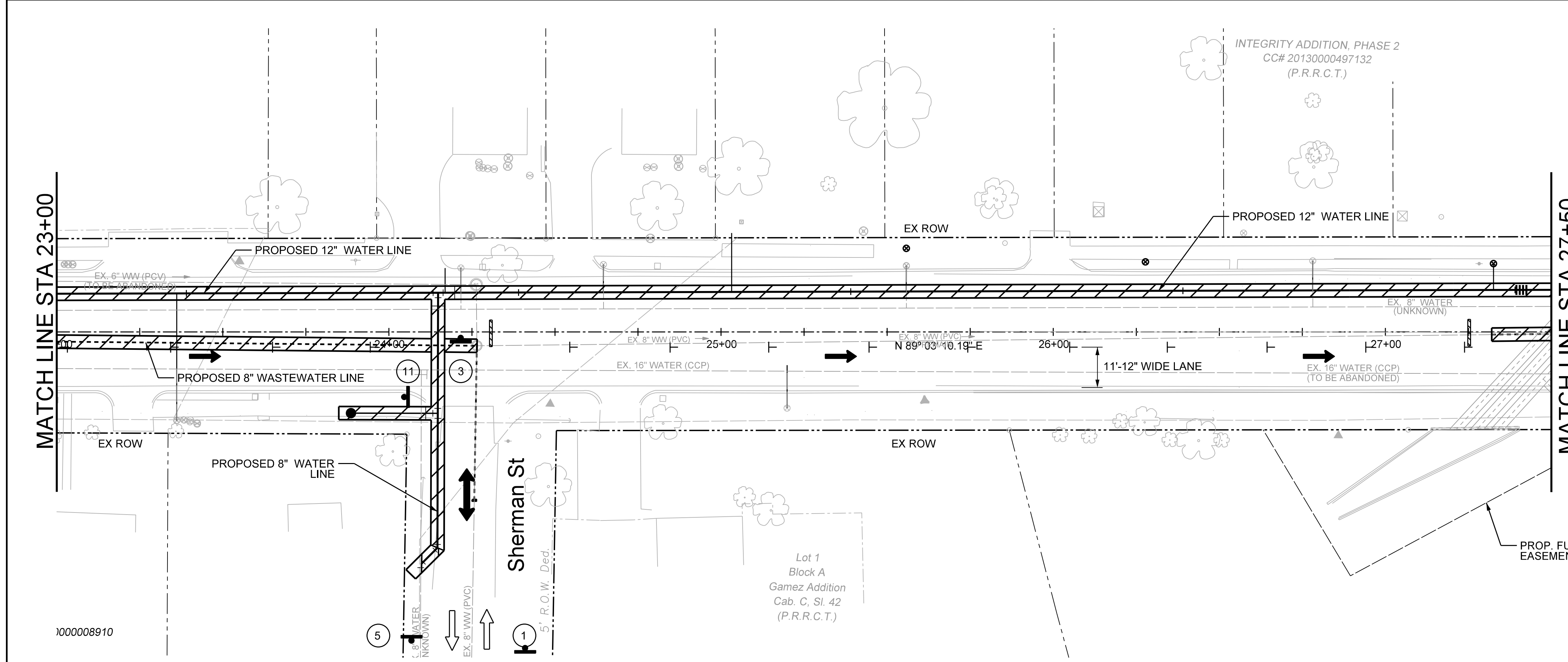
SCALE: 1" = 20' HORIZ.

NOTE  
TCP PLAN FOR DEC. 4 TO DEC. 31, 2017. AFTER DEC. 31 USE ORIGINAL SHEETS 30-32.

CALL BEFORE YOU DIG!  
TEXAS ONE CALL PARTICIPANTS REQUEST 48 HOURS NOTICE BEFORE YOU DIG, DRILL, OR BLAST - STOP CALL

Texas One Call System  
1-800-DIG-TESS

UTILITY LOCATION NOTE:  
The location of existing utilities shown on these plans are approximate and based on existing plans and data furnished by utility companies. It is the responsibility of the contractor to verify the location and depth of all existing utilities that may conflict with construction. Call 1-800-344-8377 two working days prior to construction for on site locations. Any damage to existing utilities shall be repaired at contractor's expense, at no additional cost.



BENCHMARKS

RECORD DRAWING  
THIS DRAWING IS A COMPILATION OF A COPY OF THE SEALED ENGINEERING DRAWING FOR THIS PROJECT, MODIFIED BY ADDENDA, CHANGE ORDERS AND INFORMATION FURNISHED BY THE CONTRACTOR. THE INFORMATION SHOWN ON THE RECORD DRAWING THAT WAS PROVIDED BY THE CONTRACTOR OR OTHERS NOT ASSOCIATED WITH THE DESIGN ENGINEER CANNOT BE VERIFIED FOR ACCURACY OR COMPLETENESS. THE ORIGINAL SEALED DRAWINGS ARE ON FILE AT THE OFFICE OF EJES, INC., TYPE FIRM REGISTRATION NO. 2488

James Allen, P.E., TX License No. 65929 Date: JULY 28, 2019

STATE OF TEXAS  
JAMES EDWIN ALLEN  
65929  
LICENSED PROFESSIONAL ENGINEER

EJES INCORPORATED  
12655 N Central Expy, Suite # 500, Dallas, Texas 75243.  
Tel # 214-343-1210, Fax # 214-343-3885  
FIRM REGISTRATION No: F-2488

TCP STAGE 1 PHASE 2A  
E. BOYDSTUN AVE.  
FROM S. GOLIAD ST TO S. CLARK ST  
PUBLIC WORKS DEPARTMENT  
CITY OF ROCKWALL, TEXAS

| DESIGN | DRAWN | DATE     | SCALE    | NOTES | FILE | SHEET NO. |
|--------|-------|----------|----------|-------|------|-----------|
| EJES   | EJES  | MAY 2017 | 1"=20' H |       |      | 31        |