

**LEGEND**

- STAMPED/STAINED CONC PAVEMENT
- STREET PAVEMENT (10')
- DRIVEWAY PAVEMENT (6')
- SIDEWALK PAVEMENT (4')
- ASPHALT PAVEMENT
- BLOCK SOD
- FULL DEPTH SAWCUT LINE
- BENCHMARK
- INTERSECTING STREETS POINTS
- HORIZ. LAYOUT OF SIDEWALK & RETAINING WALL POINTS

- NOTES:**
- SEE PED-12A STANDARD FOR SIDEWALK TREATMENT AT DRIVEWAYS.
  - WIDTH OF SIDEWALKS SHALL BE NARROWED WHEN CONFLICT WITH EXISTING TREES THAT REMAIN.
  - FOR CONNECTION TO EXISTING PAVEMENT SEE MISC. DETAILS SHEET.
  - JOG SIDEWALK AROUND PROPOSED COMMUNICATION CABINET LOCATIONS.

**CALL BEFORE YOU DIG!**  
 TEXAS ONE CALL PARTICIPANTS REQUEST 48 HOURS NOTICE BEFORE YOU DIG, DRILL, OR BLAST - STOP CALL

**Texas One Call System**  
 1-800-DIG-TESS

**UTILITY LOCATION NOTE:**  
 The location of existing utilities shown on these plans are approximate and based on existing plans and data furnished by utility companies. It is the responsibility of the contractor to verify the location and depth of all existing utilities that may conflict with construction. Call 1-800-344-8377 two working days prior to construction for on site locations. Any damage to existing utilities shall be repaired at contractor's expense, at no additional cost.

**STAKING POINT LIST**

POINT NO	PAVING STATION	REMARKS
①	STA 24+13.40 (40' RT)	TP=545.60
②	STA 24+13.95 (65.50' RT)	TP=545.15
③	STA 24+32.08 (65.81' RT)	TP=544.60
④	STA 24+42.40 (40' RT)	TP=544.13

TP=TOP OF PAVEMENT ELEVATION

**SIDEWALK AND RETAINING WALL**

POINT NO	PAVING STATION	REMARKS
①	STA 26+15.03 (20.05' LT)	SW
②	STA 26+25.03 (22.00' LT)	SW

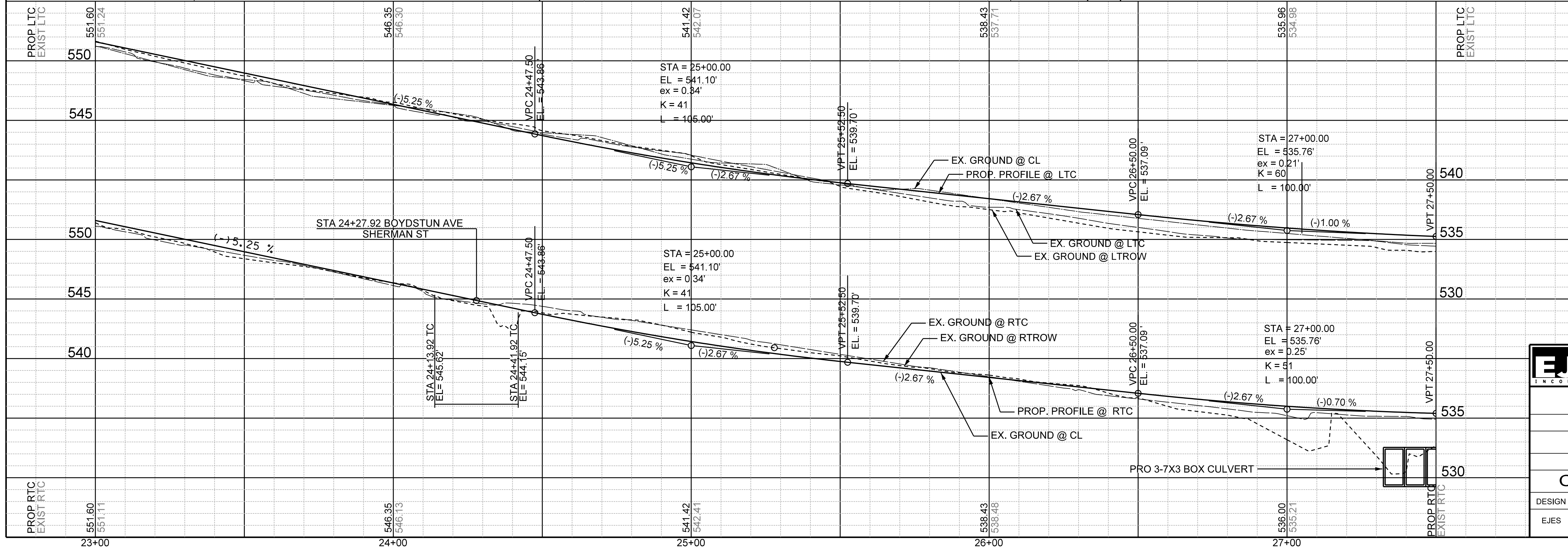
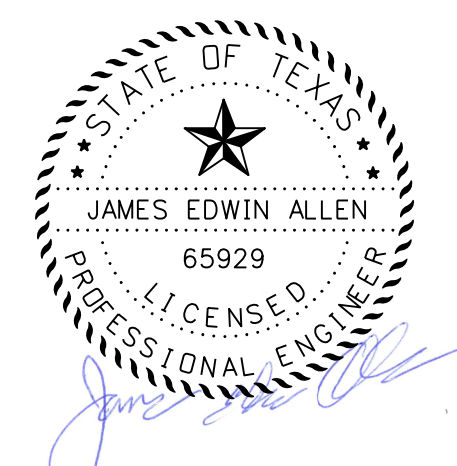
**BENCHMARKS**

④	N 7026371.130 E 2595879.811 ELEV= 555.166 60DST
⑤	N 7026321.620 E 2596327.520 ELEV= 534.835 60DST

**RECORD DRAWING**  
 THIS DRAWING IS A COMPILATION OF A COPY OF THE SEALED ENGINEERING DRAWINGS FOR THIS PROJECT, MODIFIED BY ADDENDA, CHANGE ORDERS AND INFORMATION FURNISHED BY THE CONTRACTOR. THE INFORMATION SHOWN ON THE RECORD DRAWING THAT WAS PROVIDED BY THE CONTRACTOR OR OTHERS NOT ASSOCIATED WITH THE DESIGN ENGINEER CANNOT BE VERIFIED FOR ACCURACY OR COMPLETENESS. THE ORIGINAL SEALED DRAWINGS ARE ON FILE AT THE OFFICE OF E.JES, INC. TYPE FIRM REGISTRATION NO. 2488

James Allen, P.E., TX License No. 65929 Date: July 28, 2019

AS BUILT: 8-8-2019



**EJES INCORPORATED** 12655 N Central Expy, Suite # 500, Dallas, Texas 75243. Tel # 214-343-1210, Fax # 214-343-3885 FIRM REGISTRATION No: F-2488

**PAVING PLAN & PROFILE**  
 E. BOYDSTUN AVE.  
 FROM S. GOLIAD ST TO S. CLARK ST  
 PUBLIC WORKS DEPARTMENT  
 CITY OF ROCKWALL, TEXAS

DESIGN	DRAWN	DATE	SCALE	NOTES	FILE	SHEET NO.
EJES	EJES	MAY 2017	1"=20' H 1"=5' V			13