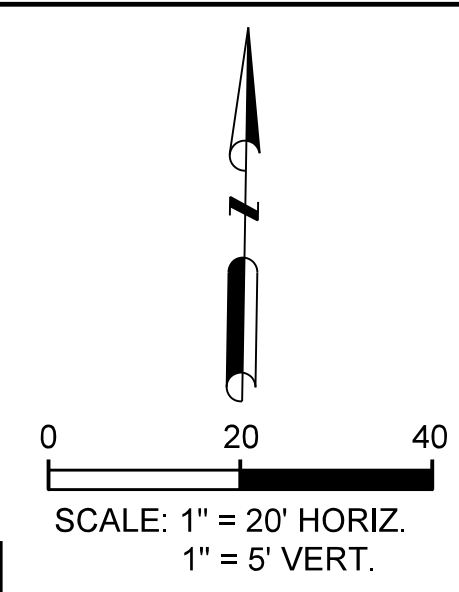


POINT NO	PAVING STATION	REMARKS
1	STA 18+62.92 (45.02' LT)	TP=568.69
2	STA 18+84.22 (45.04' LT)	TP=568.61
3	STA 20+30.38 (41.20' RT)	—
4	STA 20+31.03 (66.22' RT)	TP=565.61
5	STA 20+07.62 (66.15' RT)	TP=563.74
6	STA 20+02.38 (40.94' RT)	—

TP=TOP OF PAVEMENT ELEVATION

POINT NO	PAVING STATION	REMARKS
1	STA 18+56.58 (23.00' RT)	SW
2	STA 18+56.58 (28.00' RT)	RTW
3	STA 19+13.51 (28.00' RT)	RTW
4	STA 21+18.00 (26.50' LT)	RTW
5	STA 22+46.00 (26.50' LT)	RTW
6	STA 22+28.61 (22.00' RT)	SW
7	STA 22+28.61 (27.00' RT)	SW
8	STA 22+85.60 (22.00' RT)	SW
9	STA 22+95.60 (23.00' RT)	SW



- LEGEND**
- STAMPED/STAINED CONC PAVEMENT
  - STREET PAVEMENT (10")
  - DRIVEWAY PAVEMENT (6")
  - SIDEWALK PAVEMENT (4")
  - ASPHALT PAVEMENT
  - BLOCK SOD
  - FULL DEPTH SAWCUT LINE
  - BENCHMARK
  - INTERSECTING STREETS POINTS
  - HORIZ. LAYOUT OF SIDEWALK & RETAINING WALL POINTS

- NOTES:**
- SEE PED-12A STANDARD FOR SIDEWALK TREATMENT AT DRIVEWAYS.
  - WIDTH OF SIDEWALKS SHALL BE NARROWED WHEN CONFLICT WITH EXISTING TREES THAT REMAIN.
  - FOR CONNECTION TO EXISTING PAVEMENT SEE MISC. DETAILS SHEET.
  - JOG SIDEWALK AROUND PROPOSED COMMUNICATION CABINET LOCATIONS.

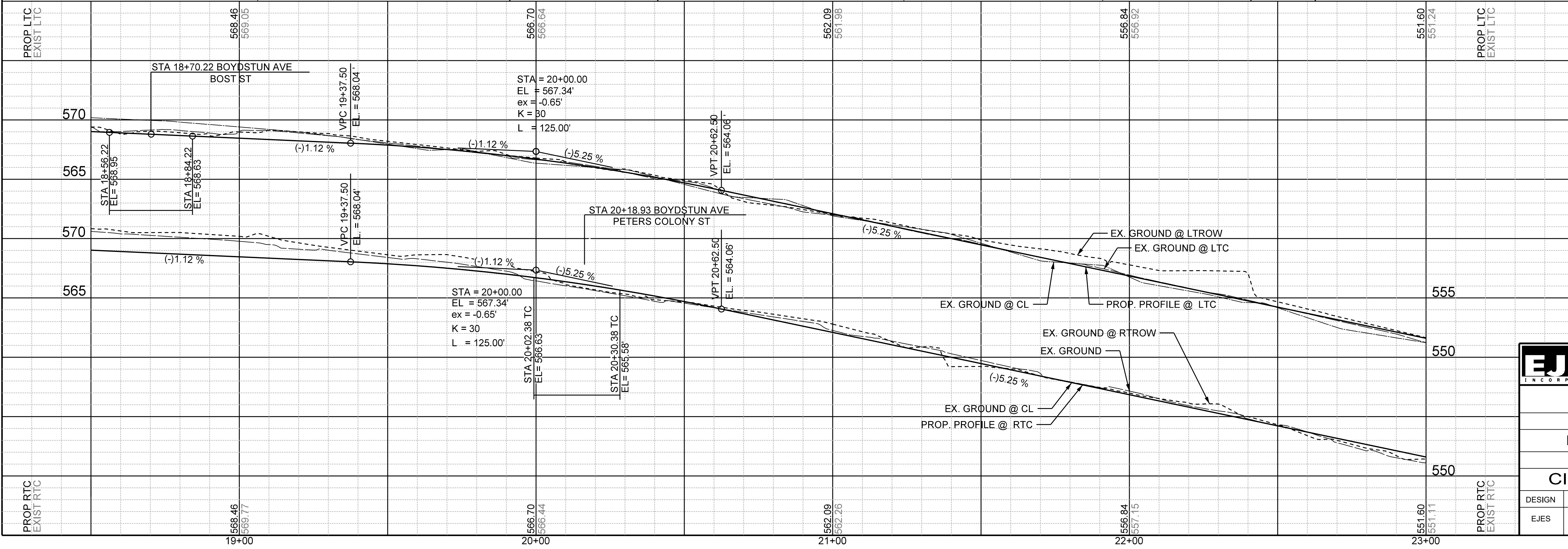
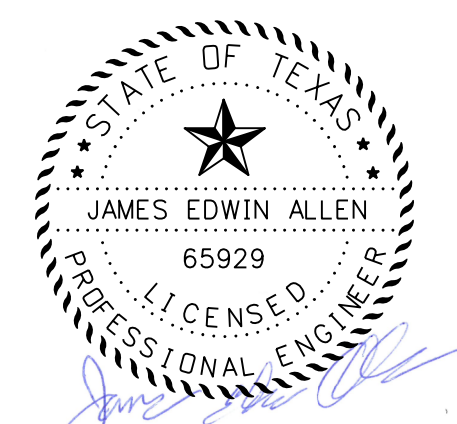
CALL BEFORE YOU DIG!  
 TEXAS ONE CALL PARTICIPANTS REQUEST 48 HOURS NOTICE BEFORE YOU DIG, DRILL, OR BLAST - STOP CALL  
**Texas One Call System**  
 1-800-DIG-TESS

**UTILITY LOCATION NOTE:**  
 The location of existing utilities shown on these plans are approximate and based on existing plans and data furnished by utility companies. It is the responsibility of the contractor to verify the location and depth of all existing utilities that may conflict with construction. Call 1-800-344-8377 two working days prior to construction for on site locations. Any damage to existing utilities shall be repaired at contractor's expense, at no additional cost.

- 3 N 7026315.130 E 2595264.068 ELEV= 571.525 CIRST
- 4 N 7026371.130 E 2595879.811 ELEV= 555.166 60DST

**RECORD DRAWING**  
 THIS DRAWING IS A COMBINATION OF A COPY OF THE SEALED ENGINEERING DRAWING FOR THIS PROJECT, MODIFIED BY ADDENDA, CHANGE ORDERS AND INFORMATION FURNISHED BY THE CONTRACTOR. THE INFORMATION SHOWN ON THIS RECORD DRAWING THAT WAS PROVIDED BY THE CONTRACTOR OR OTHERS NOT ASSOCIATED WITH THE DESIGN ENGINEER CANNOT BE VERIFIED FOR ACCURACY OR COMPLETENESS. THE ORIGINAL SEALED DRAWINGS ARE ON FILE AT THE OFFICE OF E.JES, INC., TBPE FIRM REGISTRATION NO. 2488  
 James Allen, P.E., TX License No. 65929 Date: JULY 26, 2019

AS BUILT: 8-8-2019



**EJES** INCORPORATED  
 12655 N Central Expy, Suite # 500, Dallas, Texas 75243.  
 Tel # 214-343-1210, Fax # 214-343-3885  
 FIRM REGISTRATION No: F-2488

**PAVING PLAN & PROFILE**  
 E. BOYDSTUN AVE.  
 FROM S. GOLIAD ST TO S. CLARK ST  
 PUBLIC WORKS DEPARTMENT  
 CITY OF ROCKWALL, TEXAS

DESIGN	DRAWN	DATE	SCALE	NOTES	FILE	SHEET NO.
EJES	EJES	MAY 2017	1"=20' H 1"=5' V			12