

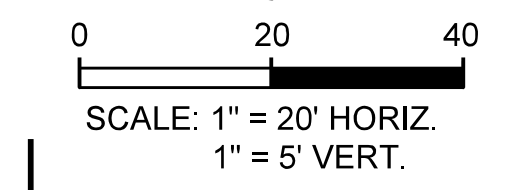
POINT NO	PAVING STATION	REMARKS
1	STA 15+69.29 (20.05' RT)	SW
2	STA 15+79.29 (23.00' RT)	SW
3	STA 16+97.78 (23.00' RT)	SW
4	STA 17+17.78 (26.00' RT)	SW
5	STA 18+19.40 (20.50' RT)	SW
6	STA 18+36.58 (20.50' RT)	SW
7	STA 18+16.58 (25.50' LT)	RTW
8	STA 18+38.58 (45.00' LT)	RTW

LOT 1, BLOCK A  
CENTRAL FIRE STATION ADDITION  
CAB. B, SL. 48  
(P.R.R.C.T.)

NOTE:  
ADJUST EXISTING COMMUNICATION MANHOLE RIM AND COVER TO PROPOSED GRADE. THE CONTRACTOR WILL COORDINATE WITH FRANCHISE UTILITY COMPANY TO SET MANHOLE TO PROPOSED GRADE.

**LEGEND**

- STAMPED/STAINED CONC PAVEMENT
- STREET PAVEMENT (10")
- DRIVEWAY PAVEMENT (6")
- SIDEWALK PAVEMENT (4")
- ASPHALT PAVEMENT
- BLOCK SOD
- FULL DEPTH SAWCUT LINE
- BENCHMARK
- INTERSECTING STREETS POINTS
- HORIZ. LAYOUT OF SIDEWALK & RETAINING WALL POINTS



- NOTES:
- SEE PED-12A STANDARD FOR SIDEWALK TREATMENT AT DRIVEWAYS.
  - WIDTH OF SIDEWALKS SHALL BE NARROWED WHEN CONFLICT WITH EXISTING TREES THAT REMAIN.
  - FOR CONNECTION TO EXISTING PAVEMENT SEE MISC. DETAILS SHEET.
  - JOG SIDEWALK AROUND PROPOSED COMMUNICATION CABINET LOCATIONS.

CALL BEFORE YOU DIG!  
TEXAS ONE CALL PARTICIPANTS REQUEST 48 HOURS NOTICE BEFORE YOU DIG, DRILL, OR BLAST - STOP CALL

**Texas One Call System**  
1-800-DIG-TESS

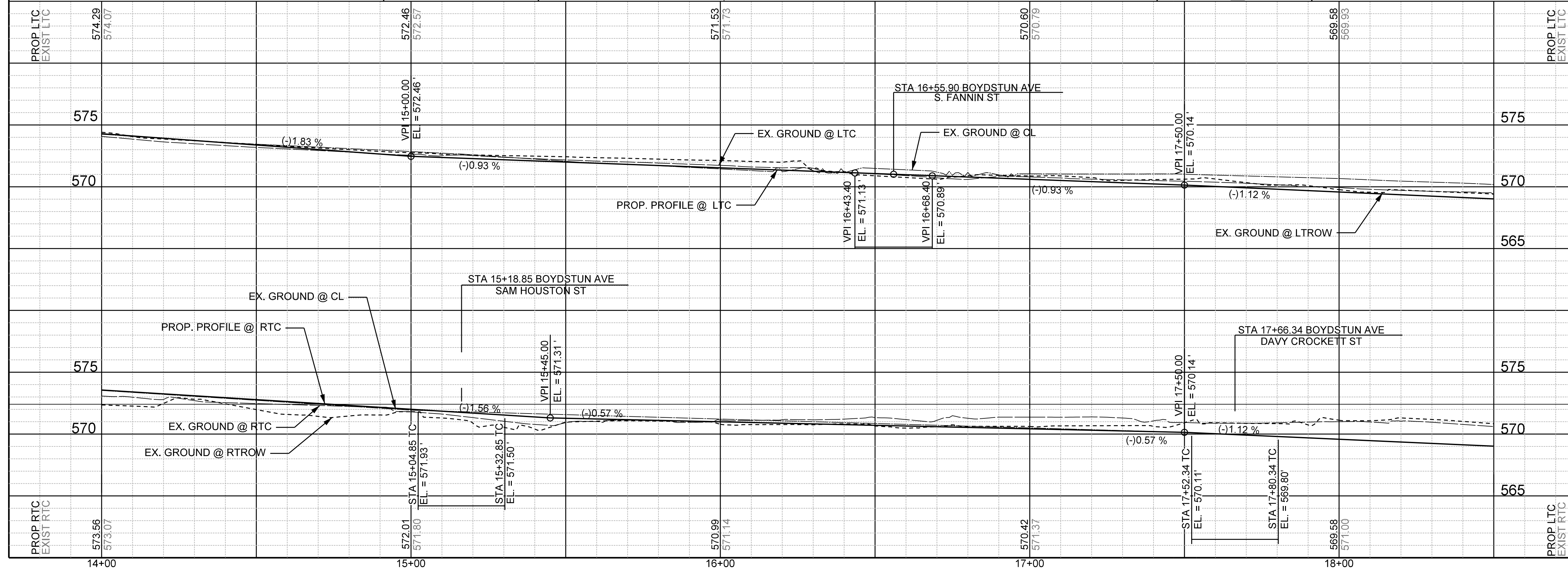
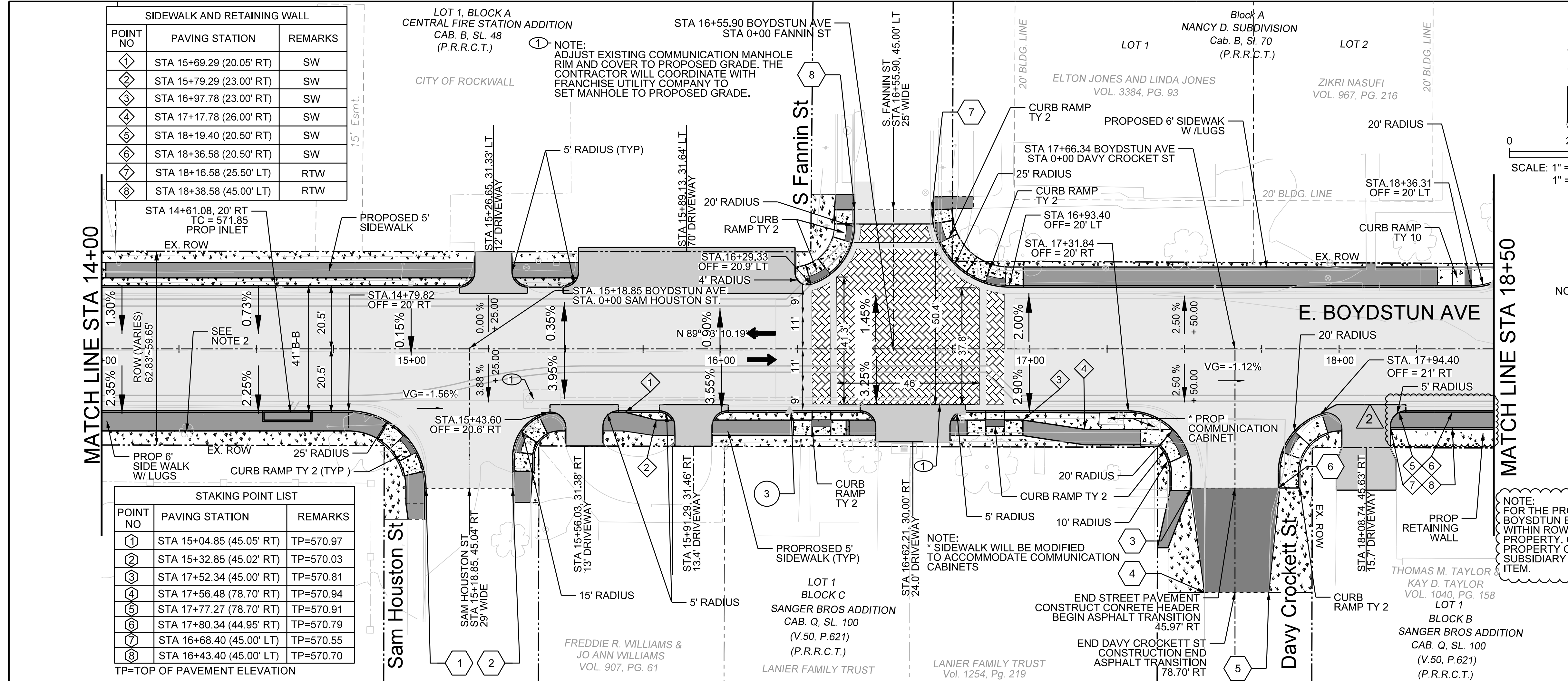
NOTE:  
FOR THE PROPERTY AT 306 E. BOYDSTUN EXISTING SHRUBS WITHIN ROW TO BE RELOCATED ON PROPERTY. COORDINATE WITH PROPERTY OWNER. THIS SHALL BE SUBSIDIARY TO THE SIDEWALK BID ITEM.

**UTILITY LOCATION NOTE:**  
The location of existing utilities shown on these plans are approximate and based on existing plans and data furnished by utility companies. It is the responsibility of the contractor to verify the location and depth of all existing utilities that may conflict with construction. Call 1-800-344-8377 two working days prior to construction for on site locations. Any damage to existing utilities shall be repaired at contractor's expense, at no additional cost.

**STAKING POINT LIST**

POINT NO	PAVING STATION	REMARKS
1	STA 15+04.85 (45.05' RT)	TP=570.97
2	STA 15+32.85 (45.02' RT)	TP=570.03
3	STA 17+52.34 (45.00' RT)	TP=570.81
4	STA 17+56.48 (78.70' RT)	TP=570.94
5	STA 17+77.27 (78.70' RT)	TP=570.91
6	STA 17+80.34 (44.95' RT)	TP=570.79
7	STA 16+68.40 (45.00' LT)	TP=570.55
8	STA 16+43.40 (45.00' LT)	TP=570.70

TP=TOP OF PAVEMENT ELEVATION

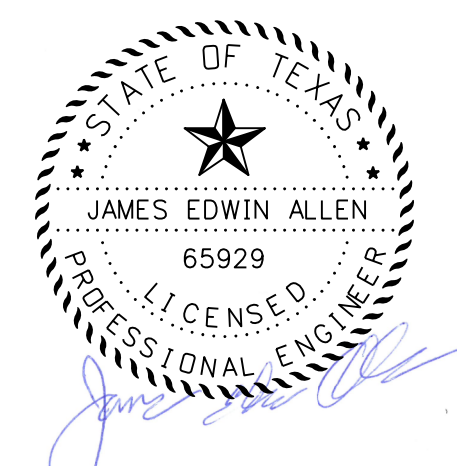


- 2 N 7026304.738 E 2594701.100 ELEV= 583.119 CIRST
- 3 N 7026315.130 E 2595264.068 ELEV= 571.525 CIRST

**RECORD DRAWING**  
THIS DRAWING IS A COMPILATION OF A COPY OF THE SEALED ENGINEERING DRAWING FOR THIS PROJECT, MODIFIED BY ADDENDA, CHANGE ORDERS AND INFORMATION FURNISHED BY THE CONTRACTOR. THE INFORMATION SHOWN ON THE RECORD DRAWING THAT WAS PROVIDED BY THE CONTRACTOR OR OTHERS NOT ASSOCIATED WITH THE DESIGN ENGINEER CANNOT BE VERIFIED FOR ACCURACY OR COMPLETENESS. THE ORIGINAL SEALED DRAWINGS ARE ON FILE AT THE OFFICE OF E.JES, INC. TBP# FIRM REGISTRATION NO. 2488

James Allen, P.E., TX License No. 65929  
Date: JULY 28, 2019

- 1 ADDENDUM 1: 9-22-2017
- 2 AS BUILT: 8-8-2019



**EJES INCORPORATED**  
12655 N Central Expy, Suite # 500, Dallas, Texas 75243.  
Tel # 214-343-1210, Fax # 214-343-3885  
FIRM REGISTRATION No: F-2488

**PAVING PLAN & PROFILE**  
E. BOYDSTUN AVE.  
FROM S. GOLIAD ST TO S. CLARK ST  
PUBLIC WORKS DEPARTMENT  
CITY OF ROCKWALL, TEXAS

DESIGN	DRAWN	DATE	SCALE	NOTES	FILE	SHEET NO.
EJES	EJES	MAY 2017	1"=20' H 1"=5' V			11