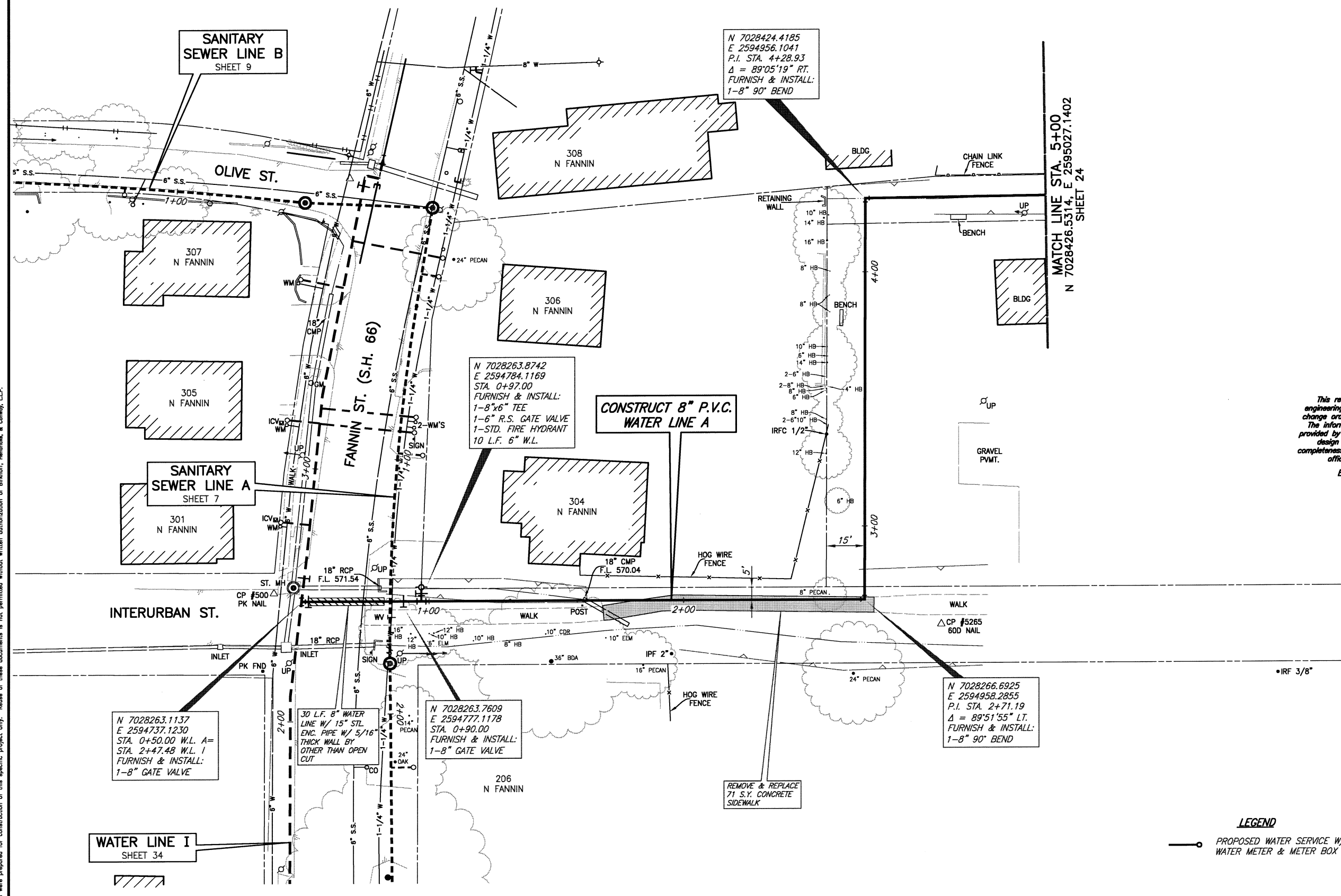
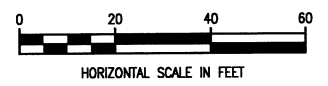


These plans and related specifications were prepared for construction of this specific project only. Reuse of these documents is not permitted without written authorization of Birkhoff, Hendricks, & Conway, L.L.P.



This record drawing is a compilation of the sealed engineering drawing for this project; modified by addenda, change orders and information furnished by the contractor. The information shown on the record drawings that was provided by the contractor or others not associated with the design engineer cannot be verified for accuracy or completeness. This original sealed drawings are on file at the offices of Birkhoff, Hendricks & Conway, L.L.P.  
 BY PAC DATE 5/29/10

**LEGEND**  
 PROPOSED WATER SERVICE W/  
 WATER METER & METER BOX



N 7028263.1137  
 E 2594737.1230  
 STA. 0+50.00 W.L. A=  
 STA. 2+47.48 W.L. I  
 FURNISH & INSTALL:  
 1-8" GATE VALVE

N 7028263.7609  
 E 2594777.1178  
 STA. 0+90.00  
 FURNISH & INSTALL:  
 1-8" GATE VALVE

N 7028263.8742  
 E 2594784.1169  
 STA. 0+97.00  
 FURNISH & INSTALL:  
 1-8"x6" TEE  
 1-6" R.S. GATE VALVE  
 1-STD. FIRE HYDRANT  
 10 L.F. 6" W.L.

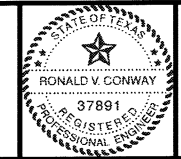
N 7028424.4185  
 E 2594956.1041  
 P.I. STA. 4+28.93  
 $\Delta = 89^{\circ}05'19" RT.$   
 FURNISH & INSTALL:  
 1-8" 90" BEND

N 7028266.6925  
 E 2594958.2855  
 P.I. STA. 2+71.19  
 $\Delta = 89^{\circ}51'55" LT.$   
 FURNISH & INSTALL:  
 1-8" 90" BEND

REMOVE & REPLACE  
 71 S.Y. CONCRETE  
 SIDEWALK

MATCH LINE STA. 5+00  
 N 7028426.5314, E 2595027.1402  
 SHEET 24

**BIRKHOFF, HENDRICKS & CONWAY, L.L.P.**  
 PROFESSIONAL ENGINEERS  
 11910 Greenville Ave., Suite 600  
 Dallas, Texas  
 (214) 361-7900



*Ronald V. Conway*  
 10/13/08

**CITY OF ROCKWALL, TEXAS**  
 DOWNTOWN AREA WATER AND SANITARY SEWER IMPROVEMENTS  
**WATER LINE A - PLAN**  
 STA. 1+00 TO STA. 5+00

BHC  
 PROJECT NO.  
 2007-148  
 OCTOBER 2008

SHEET NO.  
**23**