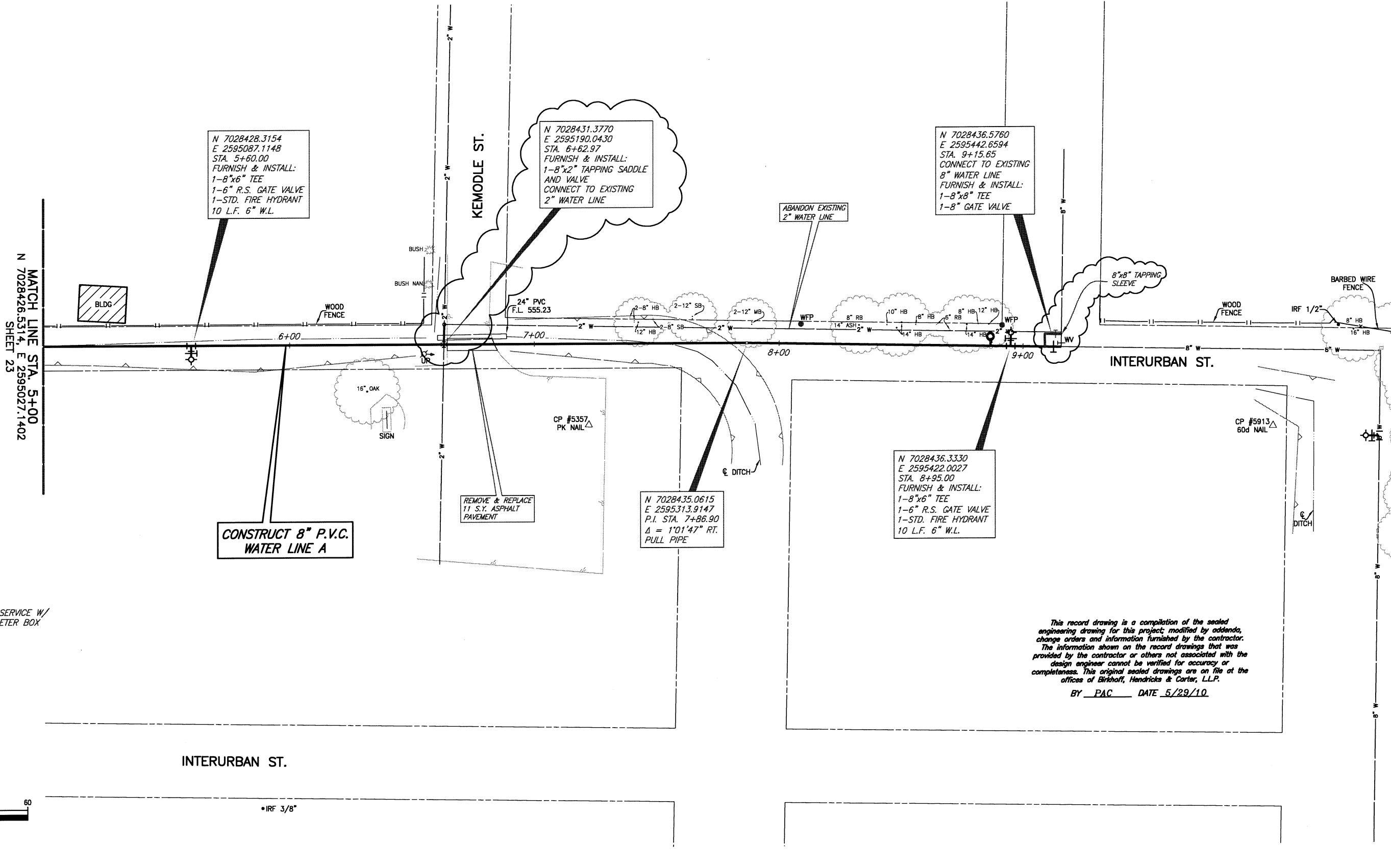


These plans and related specifications were prepared for construction of this specific project only. Reuse of these documents is not permitted without written authorization of Birkhoff, Hendricks, & Conway, L.L.P.

MATCH LINE STA. 5+00
N 7028426.5314, E 2595027.1402
SHEET 23



N 7028428.3154
E 2595087.1148
STA. 5+60.00
FURNISH & INSTALL:
1-8"x6" TEE
1-6" R.S. GATE VALVE
1-STD. FIRE HYDRANT
10 L.F. 6" W.L.

N 7028431.3770
E 2595190.0430
STA. 6+62.97
FURNISH & INSTALL:
1-8"x2" TAPPING SADDLE
AND VALVE
CONNECT TO EXISTING
2" WATER LINE

N 7028436.5760
E 2595442.6594
STA. 9+15.65
CONNECT TO EXISTING
8" WATER LINE
FURNISH & INSTALL:
1-8"x8" TEE
1-8" GATE VALVE

N 7028436.3330
E 2595422.0027
STA. 8+95.00
FURNISH & INSTALL:
1-8"x6" TEE
1-6" R.S. GATE VALVE
1-STD. FIRE HYDRANT
10 L.F. 6" W.L.

N 7028435.0615
E 2595313.9147
P.I. STA. 7+86.90
Δ = 1'01'47" RT.
PULL PIPE

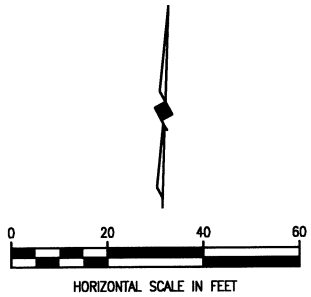
CONSTRUCT 8" P.V.C.
WATER LINE A

REMOVE & REPLACE
11 S.Y. ASPHALT
PAVEMENT

ABANDON EXISTING
2" WATER LINE

LEGEND

—○— PROPOSED WATER SERVICE W/
WATER METER & METER BOX



This record drawing is a compilation of the sealed engineering drawing for this project, modified by addenda, change orders and information furnished by the contractor. The information shown on the record drawings that was provided by the contractor or others not associated with the design engineer cannot be verified for accuracy or completeness. This original sealed drawings are on file at the offices of Birkhoff, Hendricks & Carter, L.L.P.
BY PAC DATE 5/29/10

REVISED: NOV. 24, 2008

BIRKHOFF, HENDRICKS & CONWAY, L.L.P.
PROFESSIONAL ENGINEERS
11910 Greenville Ave., Suite 600
Dallas, Texas
(214) 361-7900



Ronald V. Conway
12/4/08

CITY OF ROCKWALL, TEXAS
DOWNTOWN AREA WATER AND SANITARY SEWER IMPROVEMENTS
WATER LINE A - PLAN
STA. 5+00 TO STA. 9+15.65

BHC
PROJECT NO.
2007-148
OCTOBER 2008

SHEET NO.
24