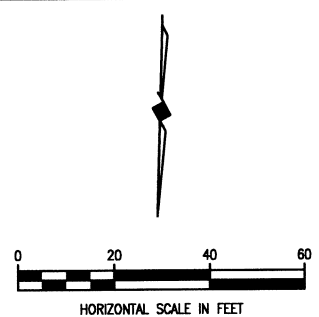
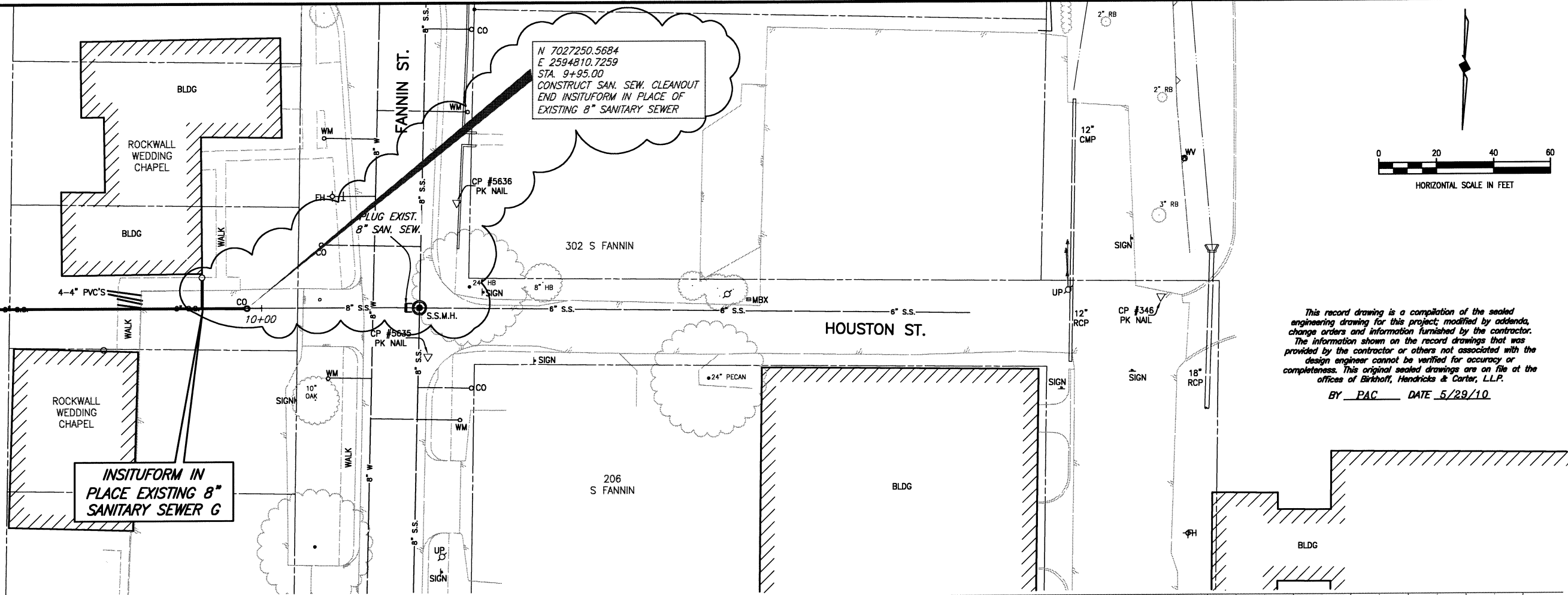
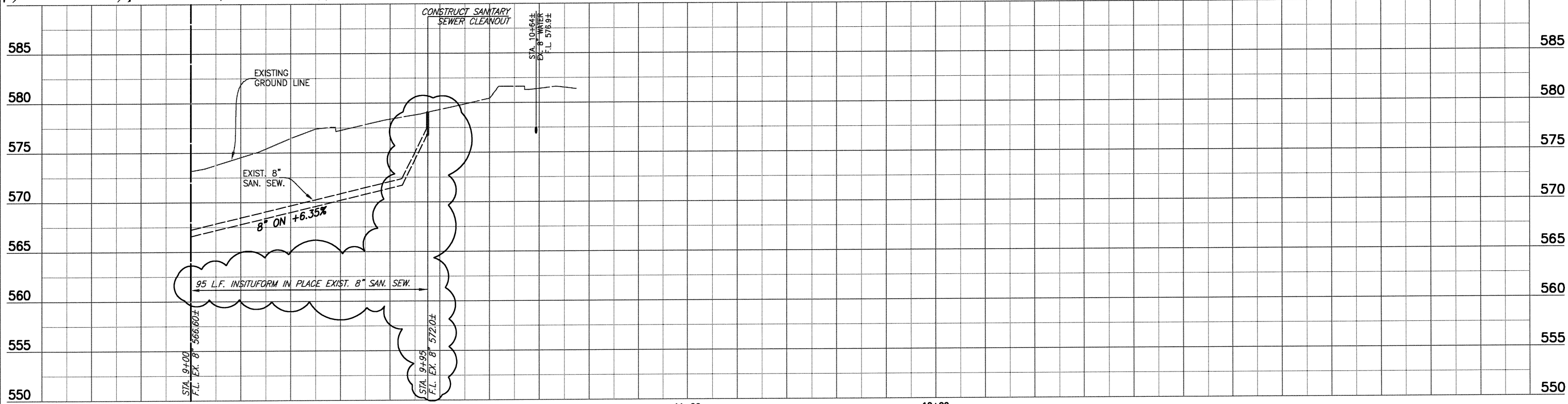


These plans and related specifications were prepared for construction of this specific project only. Reuse of these documents is not permitted without written authorization of Birkhoff, Hendricks, & Conway, L.L.P.

ROSE ST.
MATCH LINE STA. 9+00
N 7027253.1138, E 2594905.6930
SHEET 19

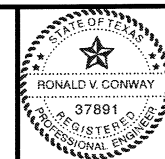


This record drawing is a compilation of the sealed engineering drawing for this project, modified by addenda, change orders and information furnished by the contractor. The information shown on the record drawings that was provided by the contractor or others not associated with the design engineer cannot be verified for accuracy or completeness. This original sealed drawings are on file at the offices of Birkhoff, Hendricks & Carter, L.L.P.
BY PAC DATE 5/29/10



REVISED: APRIL 22, 2009

BIRKHOFF, HENDRICKS & CONWAY, L.L.P.
PROFESSIONAL ENGINEERS
11910 Greenville Ave., Suite 600
Dallas, Texas
(214) 361-7900



Ronald V. Conway
10/13/08

CITY OF ROCKWALL, TEXAS
DOWNTOWN AREA WATER AND SANITARY SEWER IMPROVEMENTS
SANITARY SEWER G - PLAN & PROFILE
STA. 9+00 TO STA. 10+54.79

BHC PROJECT NO. 2007-148	SHEET NO. 20
OCTOBER 2008	