

These plans and related specifications were prepared for construction of this specific project only. Reuse of these documents is not permitted without written authorization of Birkhoff, Hendricks, & Conway, L.L.P.

SAN. SEW.
CURVE DATA
 $\Delta = 11^{\circ}44'51"$ LT.
 $R = 200.00'$
 $T = 20.56'$
 $L = 40.01'$

N 7027091.5494
E 2595705.6752
STA. 0+00.00
CONNECT TO EXISTING
SAN. SEW. MANHOLE

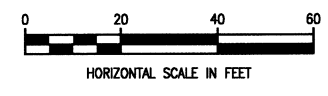
N 7027096.3388
E 2595665.0215
P.T. STA. 0+41.01

N 7027100.6644
E 2595371.8175
P.I. STA. 3+34.24
 $\Delta = 88^{\circ}05'27"$
CONSTRUCT 4' DIA. SEALED
SAN. SEW. MANHOLE

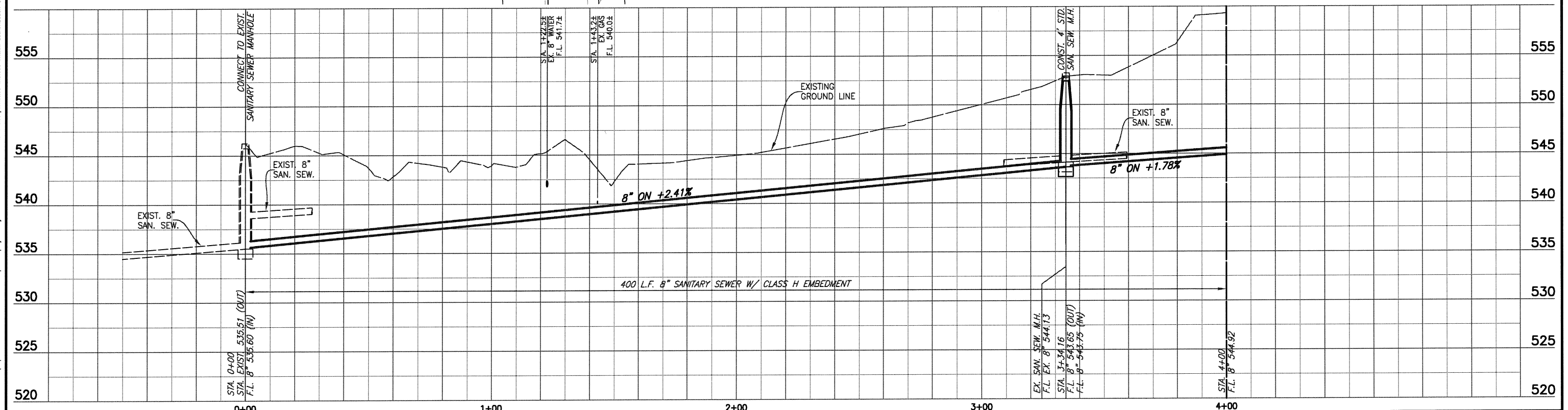
N 7027162.1754
E 2595370.6751
P.C. STA. 3+95.76

MATCH LINE STA. 4+00
N 7027166.4094, E 2595370.5516
SHEET 19

SANITARY SEWER
CURVE DATA
 $\Delta = 11^{\circ}28'42"$ LT.
 $R = 200.00'$
 $T = 20.10'$
 $L = 40.07'$



This record drawing is a compilation of the sealed engineering drawing for this project, modified by addenda, change orders and information furnished by the contractor. The information shown on the record drawings that was provided by the contractor or others not associated with the design engineer cannot be verified for accuracy or completeness. This original sealed drawings are on file at the offices of Birkhoff, Hendricks & Carter, L.L.P.
BY PAC DATE 5/29/10



<p>BIRKHOFF, HENDRICKS & CONWAY, L.L.P. PROFESSIONAL ENGINEERS 11910 Greenville Ave., Suite 600 Dallas, Texas (214) 361-7900</p>		<p><i>Ronald V. Conway</i> 10/13/08</p>	<p>CITY OF ROCKWALL, TEXAS DOWNTOWN AREA WATER AND SANITARY SEWER IMPROVEMENTS SANITARY SEWER G - PLAN & PROFILE STA. 0+00 TO STA. 4+00</p>	<p>BHC PROJECT NO. 2007-148 OCTOBER 2008</p>	<p>SHEET NO. 18</p>
---	--	---	---	--	--------------------------------