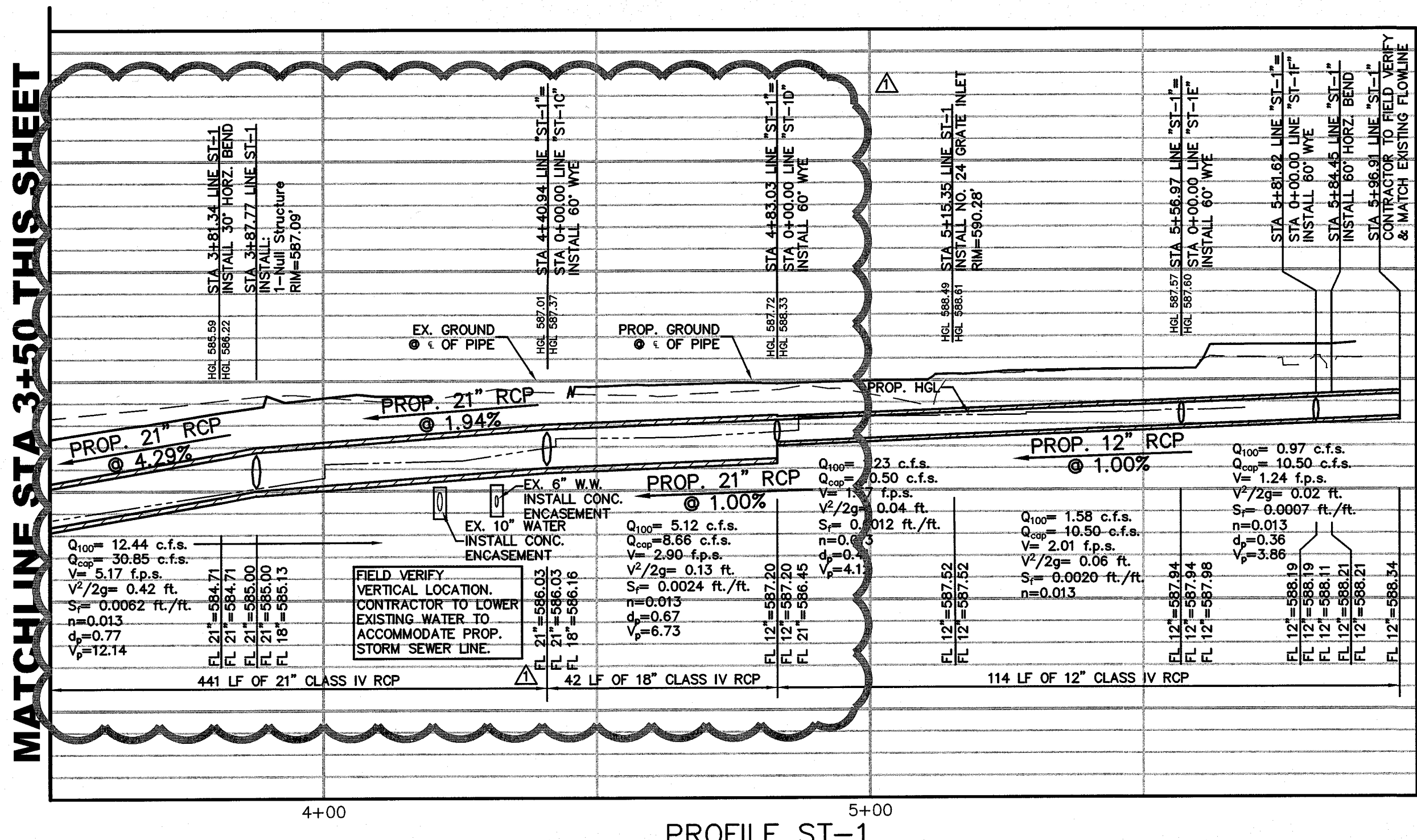


PROFILE ST-1

MATCHLINE STA 3+50 THIS SHEET

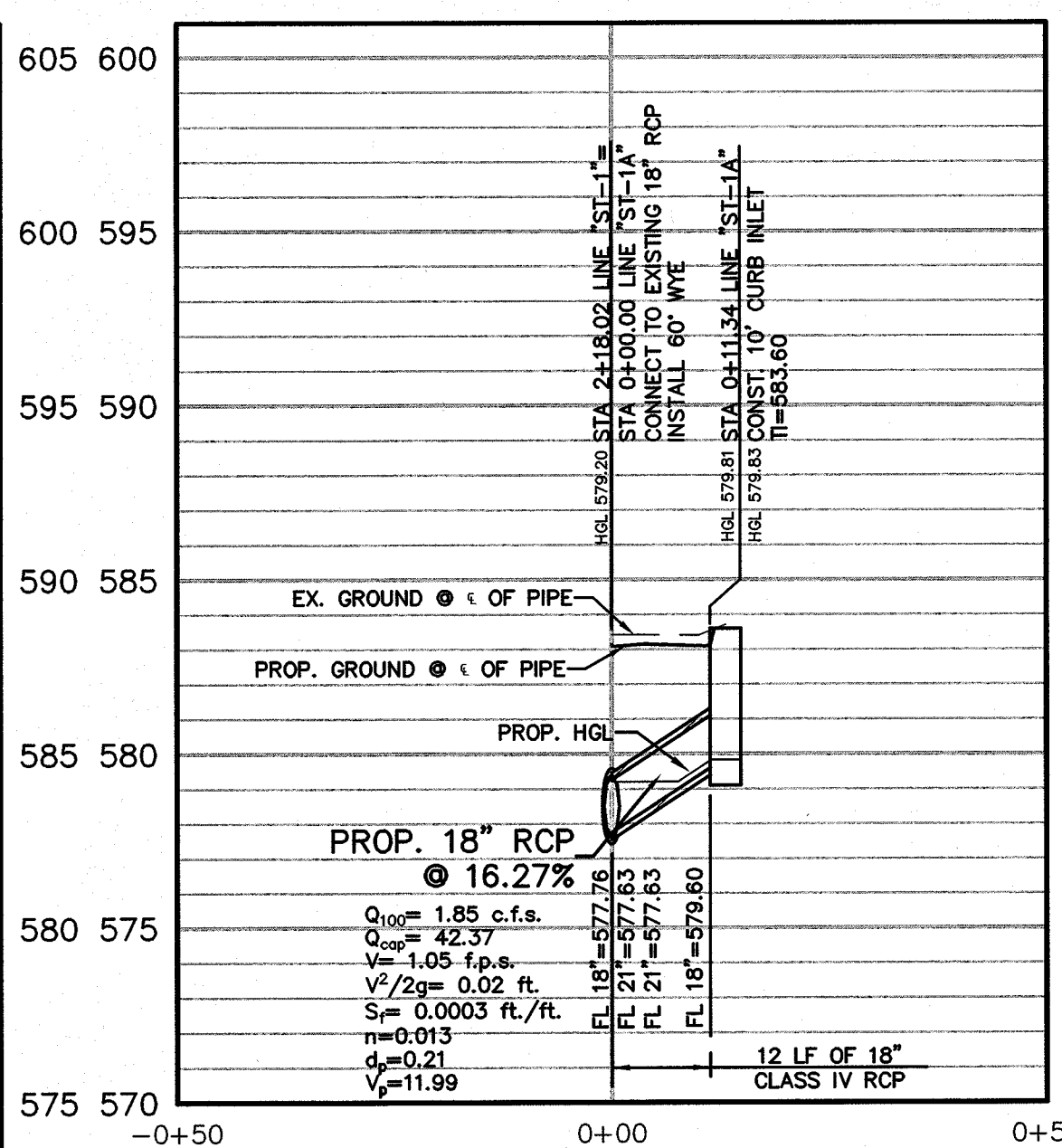
**BENCH MARK LIST**

BM# 1	"+" SET IN BOX ON CURB INLET ON NORTHWEST CORNER OF ALAMO ST. AND GOLIAD ST.	ELEV=574.54
BM# 2	"+" SET IN BOX ON BACK OF CURB ON SOUTH SIDE OF A CURB RETURN TO A PARKING LOT ON EAST SIDE OF FANNIN ST. ±7 FEET SOUTH OF OLIVE ST.	ELEV=573.63
BM# 3	"+" SET IN BOX ON SOUTH WEST CORNER OF GOLIAD ST. AND KAUFMAN ST. ±40 FEET WEST OF ∠ OF GOLIAD ST. AND ±25 FEET SOUTH OF ∠ OF KAUFMAN	ELEV=587.41
BM# 4	"+" SET IN BOX ON NORTH EAST CORNER OF N. FANNIN ST. AND KAUFMAN ST. ±15 FEET NORTH OF ∠ OF KAUFMAN ST. AND ±30 FEET EAST FROM ∠ OF KAUFMAN ST.	ELEV=578.80
BM# 5	"+" SET IN BOX ON NORTH WEST CORNER OF WASHINGTON ST. ON GOLIAD ST. ±40 FEET WEST OF ∠ OF GOLIAD ST. AND ±25 FEET NORTH OF ∠ OF WASHINGTON ST.	ELEV=595.39
BM# 6	"+" SET IN BOX SOUTH EAST CORNER OF WASHINGTON ST. AND FANNIN ST. ±22 FEET OF ∠ OF FANNIN ST. AND ±45 FEET SOUTH OF ∠ OF WASHINGTON ST.	ELEV=580.69

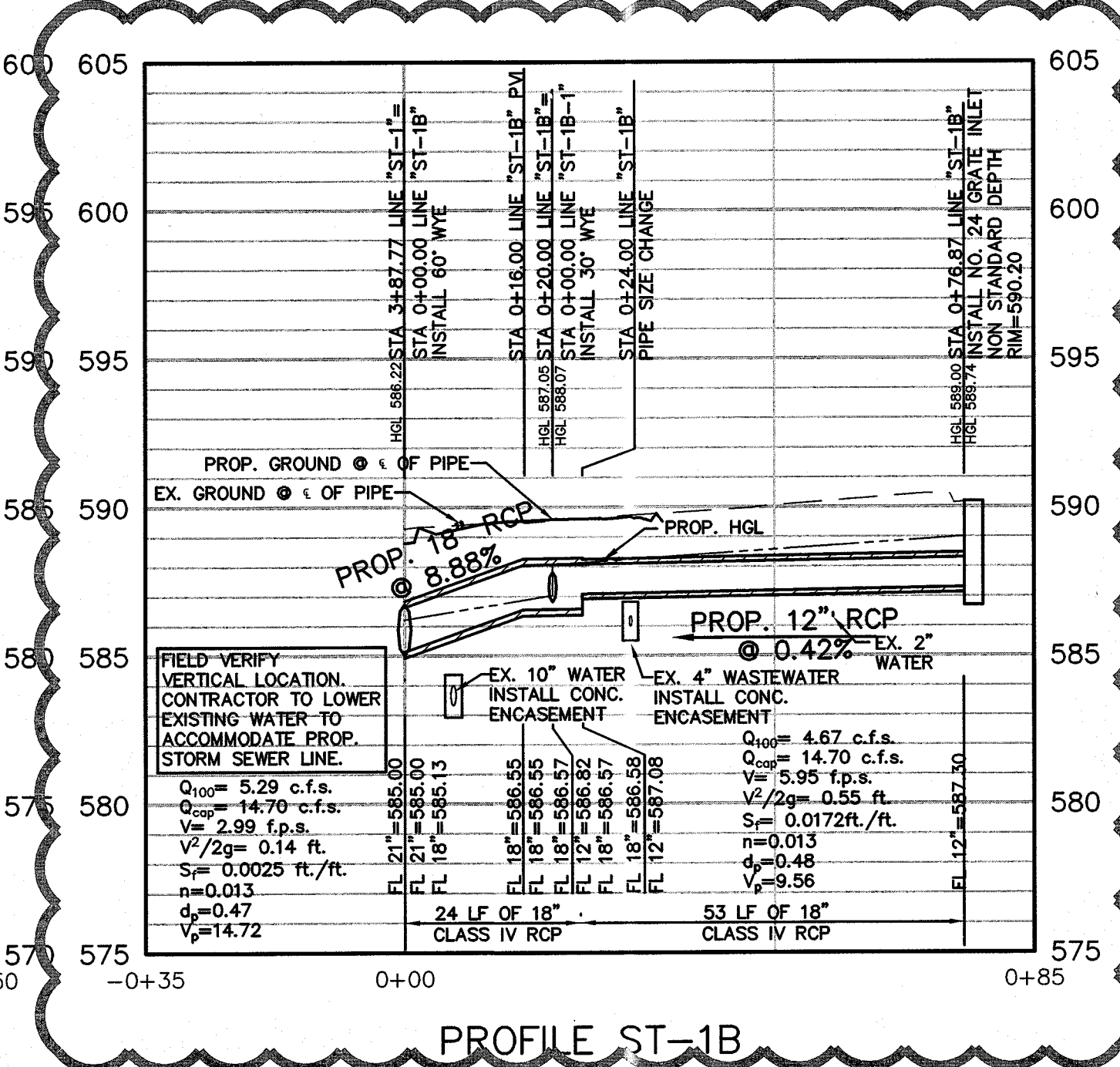


PROFILE ST-1

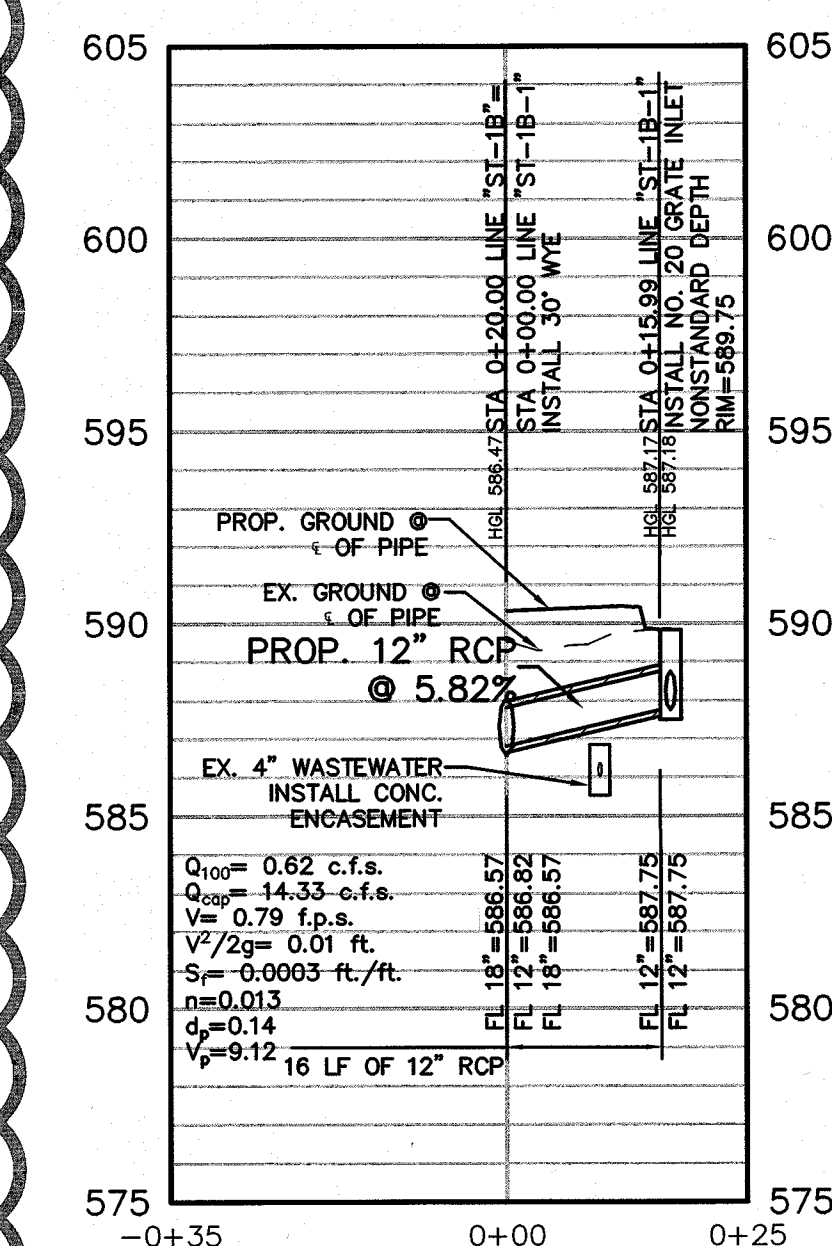
MATCHLINE STA 3+50 THIS SHEET



PROFILE ST-1A



PROFILE ST-1B



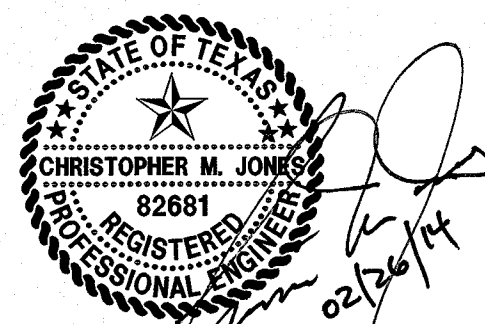
PROFILE ST-1B-1

**Downtown Rockwall**  
 streetscape improvements  
 PHASE 2  
 rockwall, texas

submittals / revisions

no.	date	detail
△ 4/10/14		RFI'S 24 & 65

la terra studio, inc.  
 12024  
 Its project number  
 02.26.2014  
 date  
 JHB  
 drawn by  
 CMJ  
 checked by  
 registration



THE SEAL APPEARING ON THIS DOCUMENT WAS AUTHORIZED BY CHRISTOPHER M. JONES, P.E. 82881 ON 02/26/2014. ALTERATION OF A SEALED DOCUMENT WITHOUT PROPER NOTIFICATION TO THE RESPONSIBLE ENGINEER IS AN OFFENSE UNDER THE TEXAS ENGINEERING PRACTICE ACT.