

Downtown Rockwall
la terra studio Project #12024
streetscape improvements
PHASE 2
rockwall, texas



submittals / revisions

no. date detail

la terra studio, inc.

12024
its project number

02.26.2014
date

JHB
drawn by

CMJ
checked by

registration

sheet title

Erosion Control Plan

sheet number

C7-1

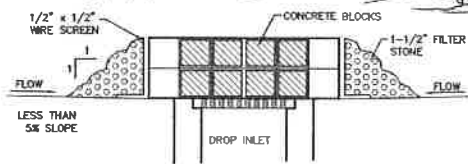
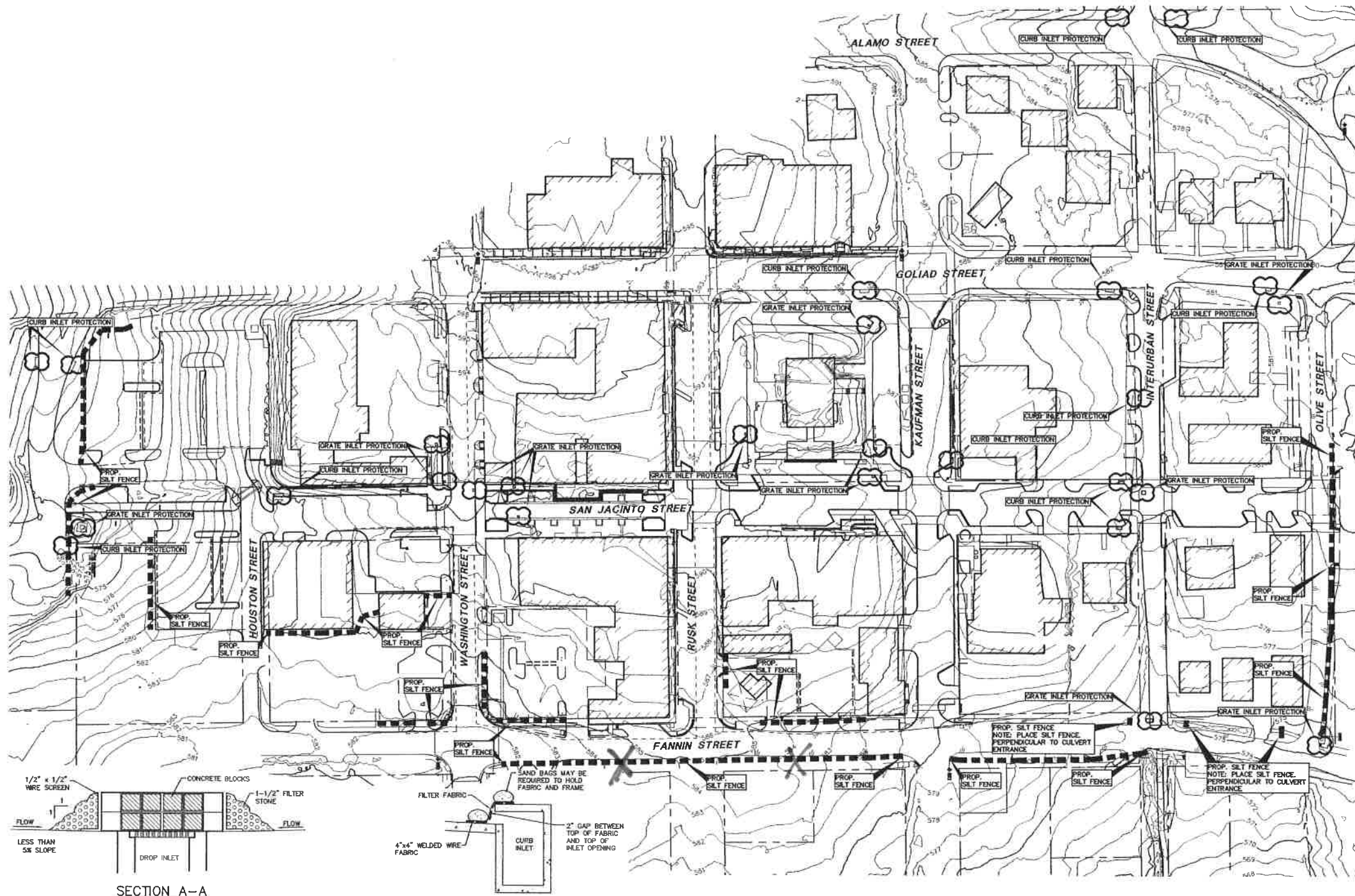


LEGEND

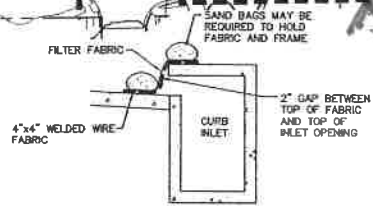
- B. BOLLARD
- EM ELECTRIC METER
- PP POWER POLE
- LS LIGHT STANDARD
- W₀ WATER METER
- W_v WATER VALVE
- IV IRRIGATION CONTROL VALVE
- FD FIRE HYDRANT
- CH CLEANOUT
- MH MANHOLE
- TSC TRAFFIC SIGNAL CONTROL
- TSP TRAFFIC SIGNAL POLE
- TB TELEPHONE BOX
- TS TRAFFIC SIGN
- PROPERTY LINE
- FENCE
- 61.3 EXISTING CONTOUR
- S77 PROPOSED CONTOUR
- PROPOSED DRAINAGE FLOW DIRECTION
- INLET PROTECTION
- SILT FENCE (LIMITS OF DISTURBED AREA)

CONTRACTOR SHALL CLEAR STREETS OF SEDIMENT & DEBRIS CAUSED BY CONSTRUCTION ACTIVITIES AT CLOSE OF WORK DAY.

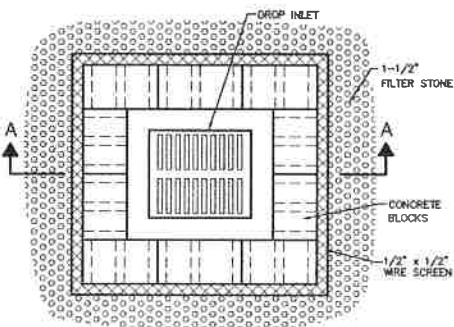
NOTE: EROSION CONTROL MEASURES FOR CONSTRUCTION WITHIN TxDOT RIGHT-OF-WAY SHALL BE PERFORMED IN ACCEPTANCE WITH THE TxDOT STANDARD DETAILS WITHIN THIS PLAN SET COORDINATE WITH TxDOT REPRESENTATIVES



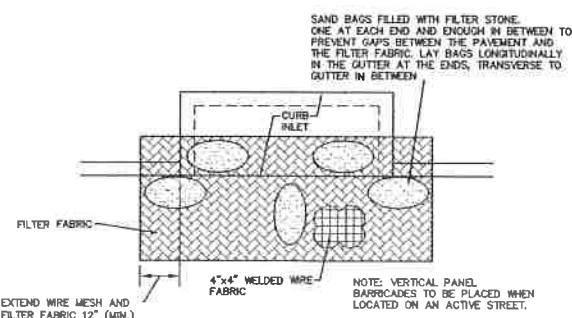
SECTION A-A



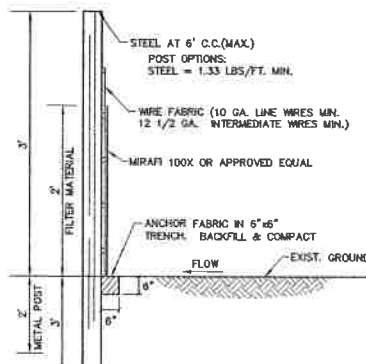
CROSS SECTION



PLAN VIEW



PLAN VIEW



3 SILT FENCE

BENCH MARK LIST

BMP 1	"+" SET IN BOX ON CURB INLET ON NORTHWEST CORNER OF ALAMO ST. AND GOLIAD ST. ELEV=574.54
BMP 2	"+" SET IN BOX ON BACK OF CURB ON SOUTH SIDE OF A CURB RETURN TO A PARKING LOT ON EAST SIDE OF FANNIN ST. ±7 FEET SOUTH OF OLIVE ST. ELEV=573.63
BMP 3	"+" SET IN BOX ON SOUTH WEST CORNER OF GOLIAD ST. AND KAUFMAN ST. ±40 FEET WEST OF E. OF GOLIAD ST. AND ±25 FEET SOUTH OF E. OF KAUFMAN ELEV=567.41
BMP 4	"+" SET IN BOX ON NORTH EAST CORNER OF N. FANNIN ST. AND KAUFMAN ST. ±15 FEET NORTH OF E. OF KAUFMAN ST. AND ±30 FEET EAST FROM E. OF KAUFMAN ST. ELEV=578.80
BMP 5	"+" SET IN BOX ON NORTH WEST CORNER OF WASHINGTON ST. ON GOLIAD ST. ±40 FEET WEST OF E. OF GOLIAD ST. AND ±25 FEET NORTH OF E. OF WASHINGTON ST. ELEV=595.39
BMP 6	"+" SET IN BOX SOUTH EAST CORNER OF WASHINGTON ST. AND FANNIN ST. ±22 FEET OF E. OF FANNIN ST. AND ±45 FEET SOUTH OF E. OF WASHINGTON ST. ELEV=580.69



THE SEAL APPEARING ON THIS DOCUMENT WAS AUTHORIZED BY CHRISTOPHER M. JONES, P.E. 82661 ON 02/26/2014. ALTERATION OF A SEALED DOCUMENT WITHOUT PROPER NOTIFICATION TO THE RESPONSIBLE ENGINEER IS AN OFFENSE UNDER THE TEXAS ENGINEERING PRACTICE ACT.