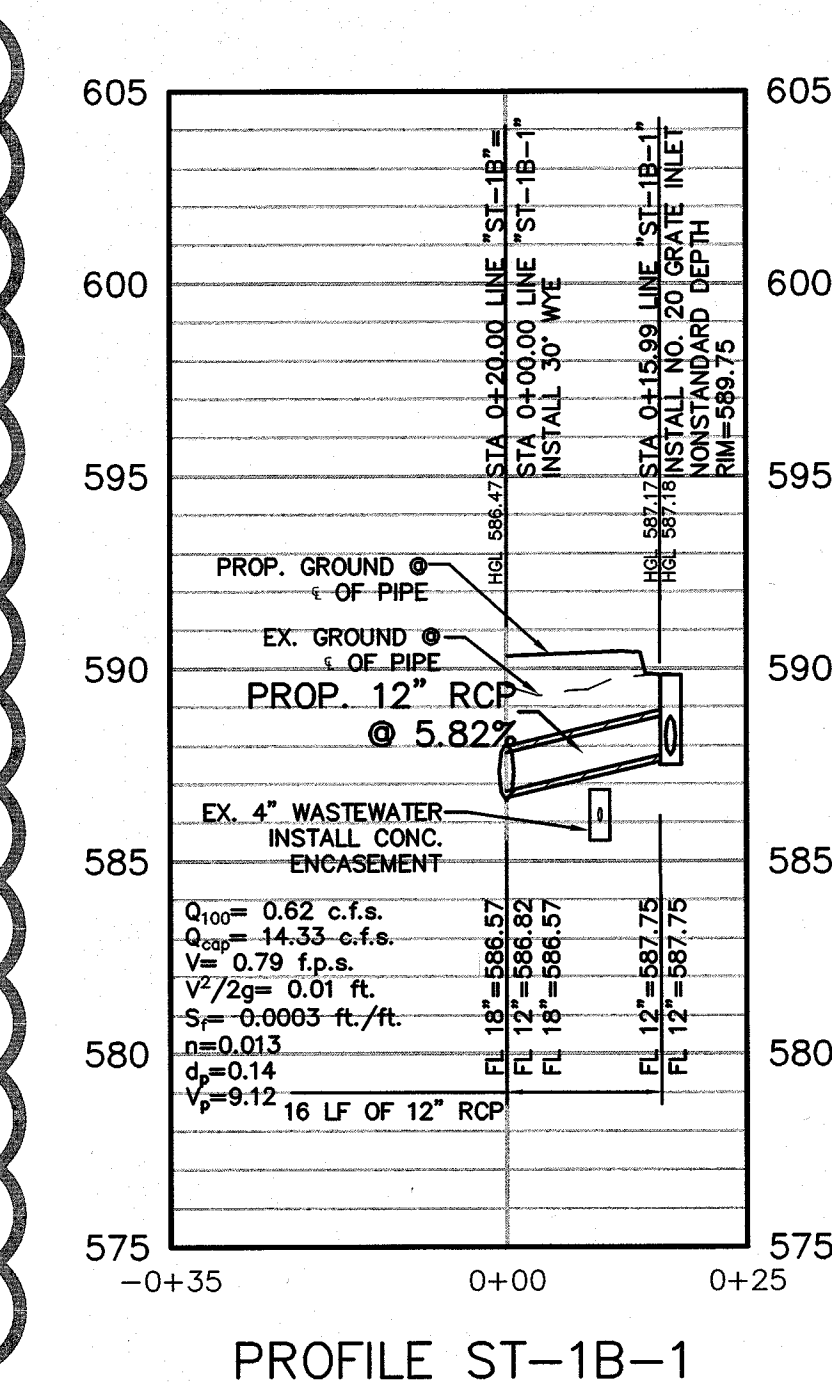
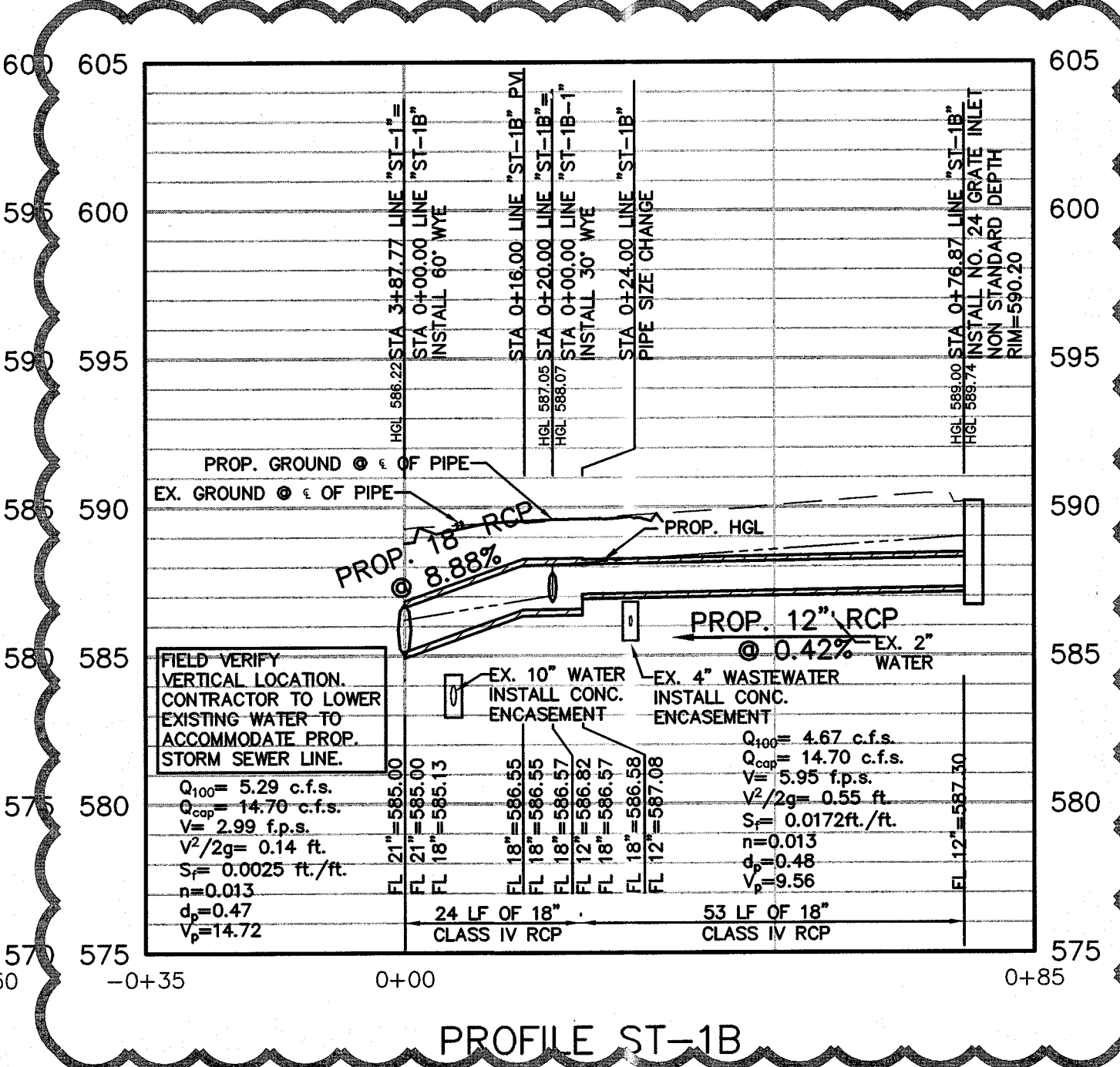
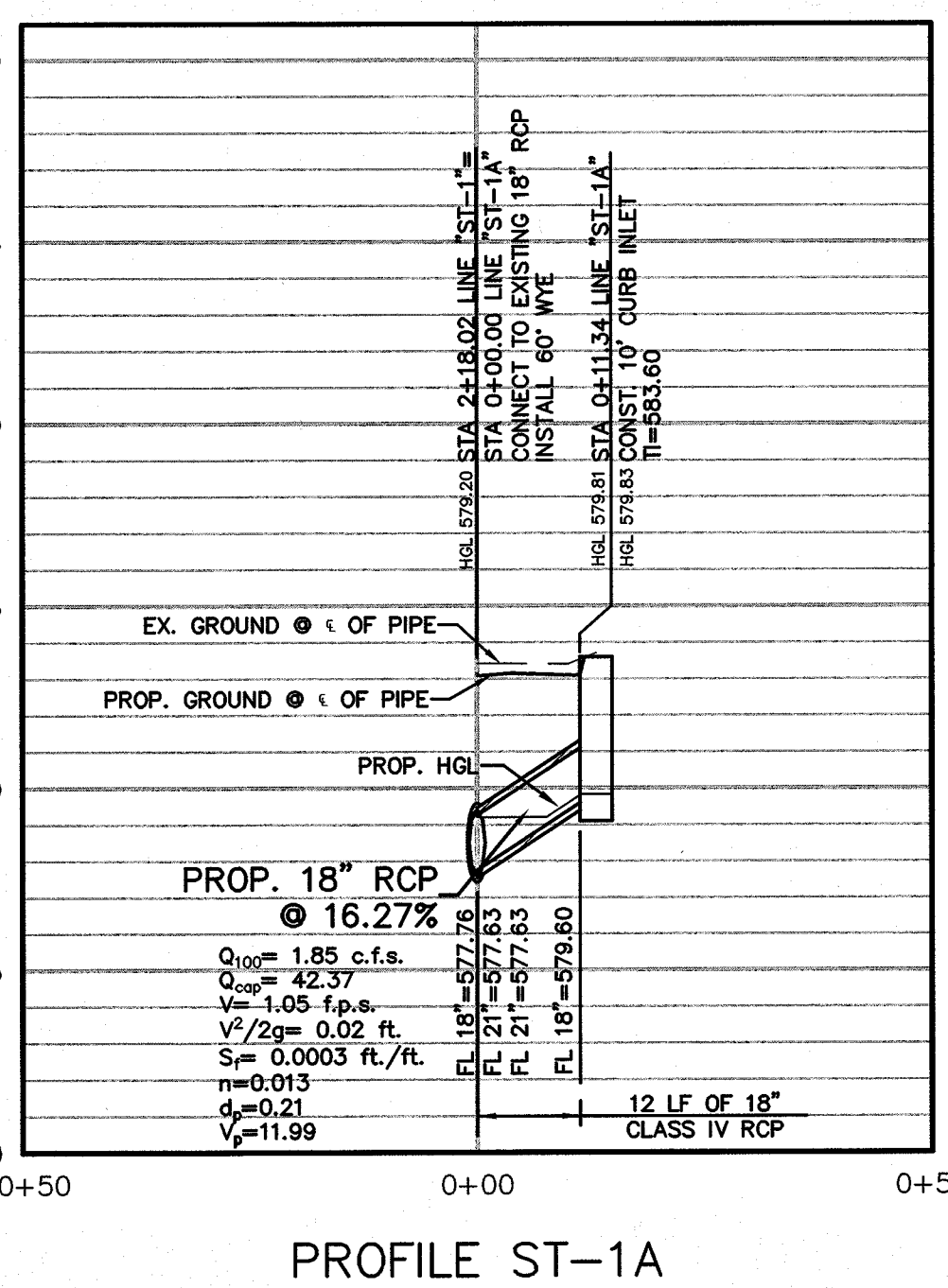
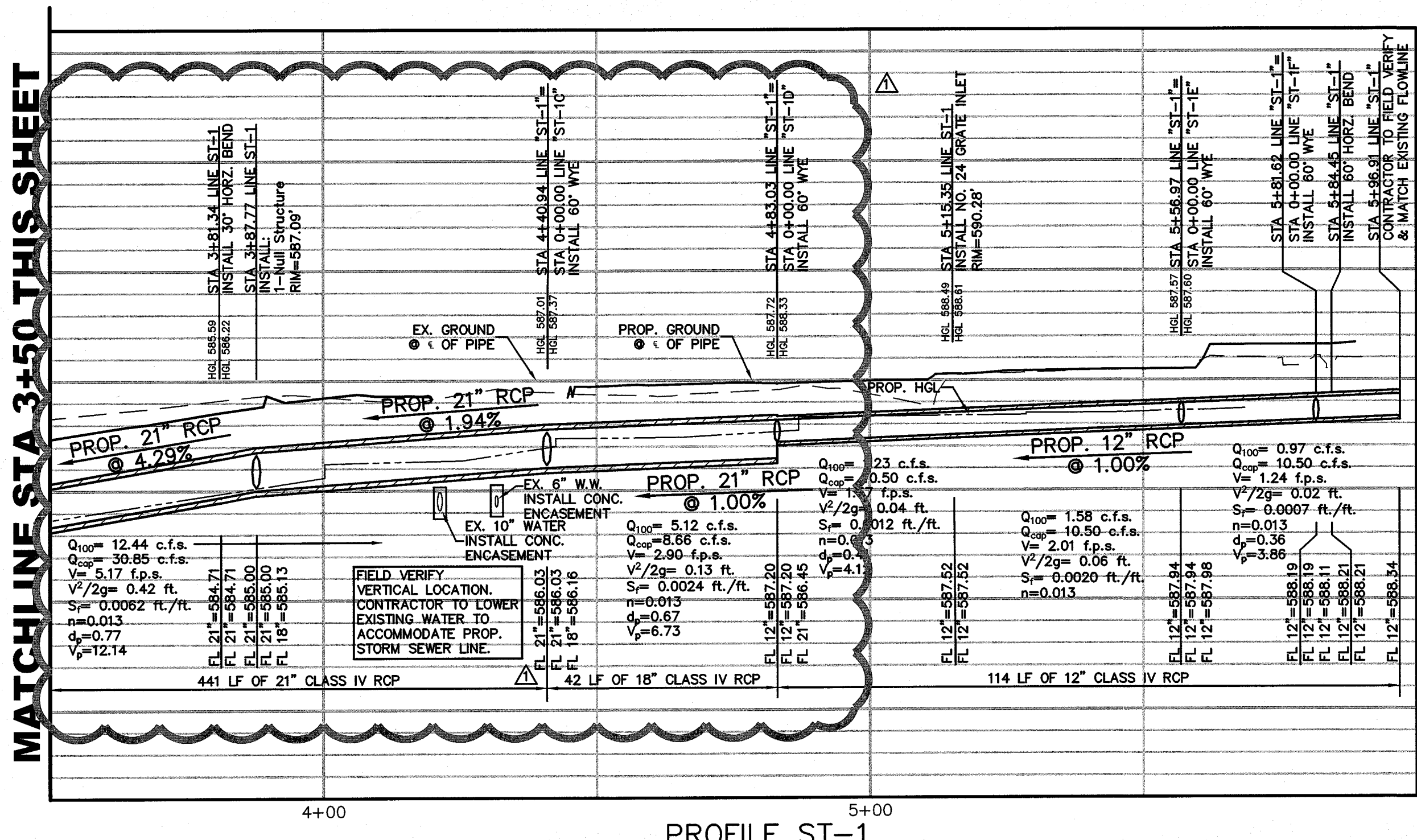


MATCHLINE STA 3+50 THIS SHEET

BENCH MARK LIST

| | | |
|-------|---|-------------|
| BM# 1 | "+" SET IN BOX ON CURB INLET ON NORTHWEST CORNER OF ALAMO ST. AND GOLIAD ST. | ELEV=574.54 |
| BM# 2 | "+" SET IN BOX ON BACK OF CURB ON SOUTH SIDE OF A CURB RETURN TO A PARKING LOT ON EAST SIDE OF FANNIN ST. ±7 FEET SOUTH OF OLIVE ST. | ELEV=573.63 |
| BM# 3 | "+" SET IN BOX ON SOUTH WEST CORNER OF GOLIAD ST. AND KAUFMAN ST. ±40 FEET WEST OF ∠ OF GOLIAD ST. AND ±25 FEET SOUTH OF ∠ OF KAUFMAN | ELEV=587.41 |
| BM# 4 | "+" SET IN BOX ON NORTH EAST CORNER OF N. FANNIN ST. AND KAUFMAN ST. ±15 FEET NORTH OF ∠ OF KAUFMAN ST. AND ±30 FEET EAST FROM ∠ OF KAUFMAN ST. | ELEV=578.80 |
| BM# 5 | "+" SET IN BOX ON NORTH WEST CORNER OF WASHINGTON ST. ON GOLIAD ST. ±40 FEET WEST OF ∠ OF GOLIAD ST. AND ±25 FEET NORTH OF ∠ OF WASHINGTON ST. | ELEV=595.39 |
| BM# 6 | "+" SET IN BOX SOUTH EAST CORNER OF WASHINGTON ST. AND FANNIN ST. ±22 FEET OF ∠ OF FANNIN ST. AND ±45 FEET SOUTH OF ∠ OF WASHINGTON ST. | ELEV=580.69 |



Downtown Rockwall
 streetscape improvements
 PHASE 2
 rockwall, texas

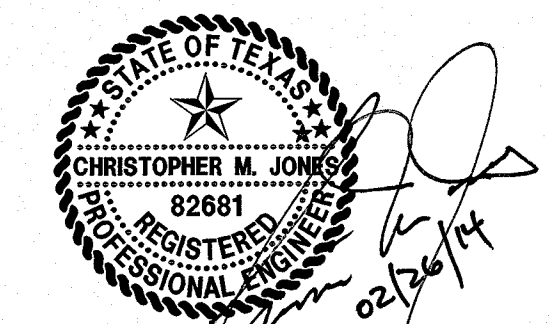
submittals / revisions

| no. | date | detail |
|-----|---------|---------------|
| △ | 4/10/14 | RFI'S 24 & 65 |

la terra studio, inc.

12024
 Its project number
 02.26.2014
 date
 JHB
 drawn by
 CMJ
 checked by

registration



THE SEAL APPEARING ON THIS DOCUMENT WAS AUTHORIZED BY CHRISTOPHER M. JONES, P.E. 82881 ON 02/26/2014. ALTERATION OF A SEALED DOCUMENT WITHOUT PROPER NOTIFICATION TO THE RESPONSIBLE ENGINEER IS AN OFFENSE UNDER THE TEXAS ENGINEERING PRACTICE ACT.