

**Downtown Rockwall**  
 streetscape improvements  
 PHASE 2  
 rockwall, texas



submittals / revisions

no.	date	detail
1	4/10/14	RFI'S 24, 65 & 74
2	4/28/14	LOWERED LINE "ST-1"
3	7/11/14	LASI #7

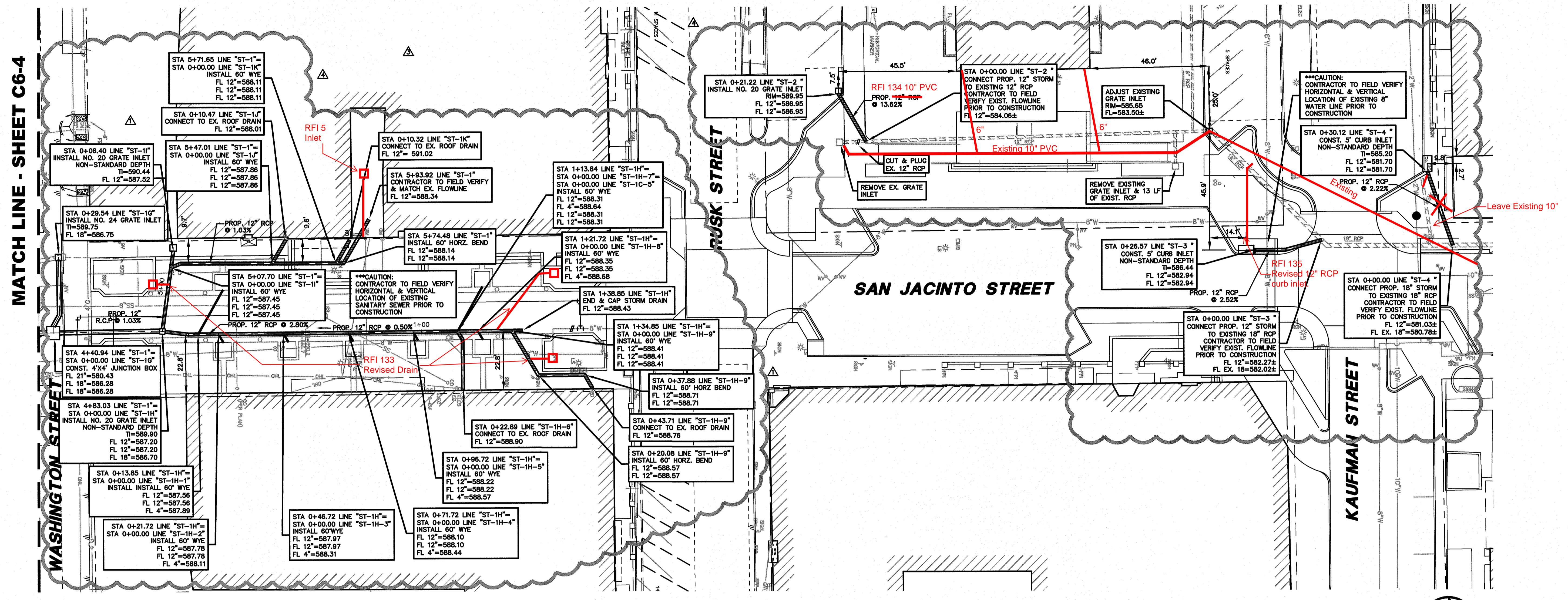
la terra studio, inc.

12024  
 Its project number  
 02.26.2014  
 date  
 JHB  
 drawn by  
 CMJ  
 checked by

registration

sheet title  
**STORM DRAINAGE PLAN**  
 sheet number

**C6-5**  
**AS BUILT**  
 03/07/2016



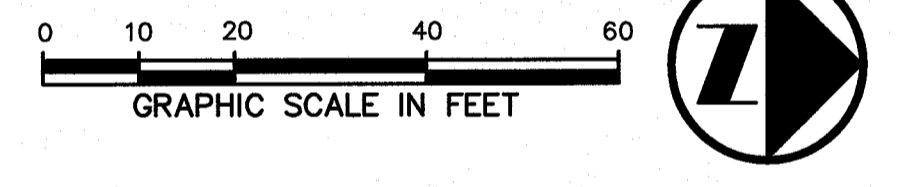
MATCH LINE - SHEET C6-4

WASHINGTON STREET

RUSK STREET

SAN JACINTO STREET

KAUFMAN STREET

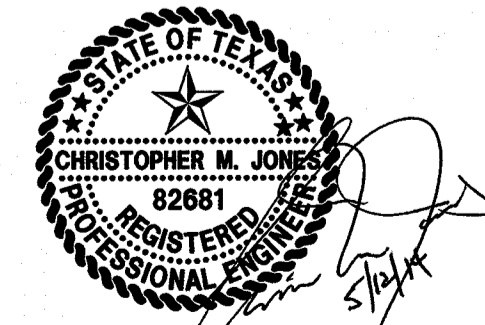
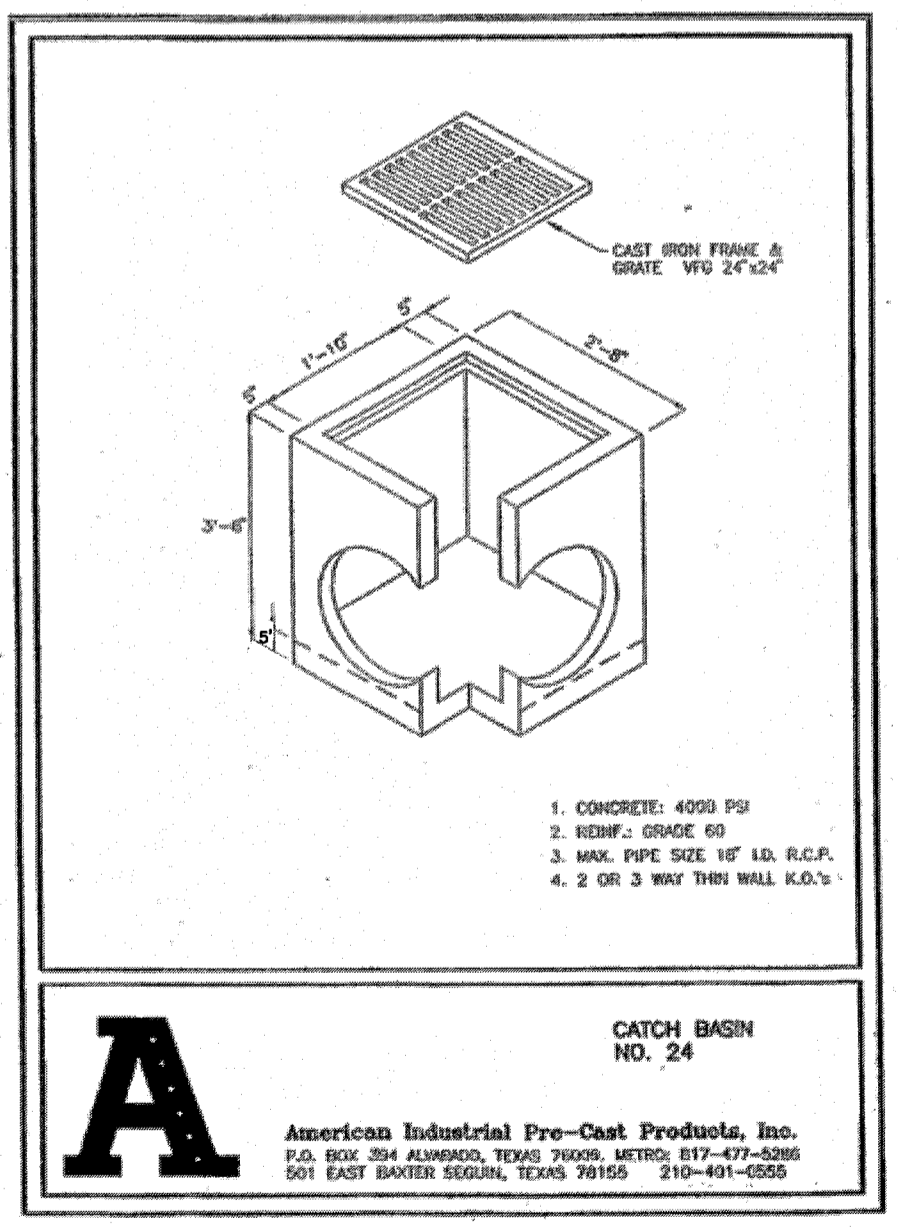
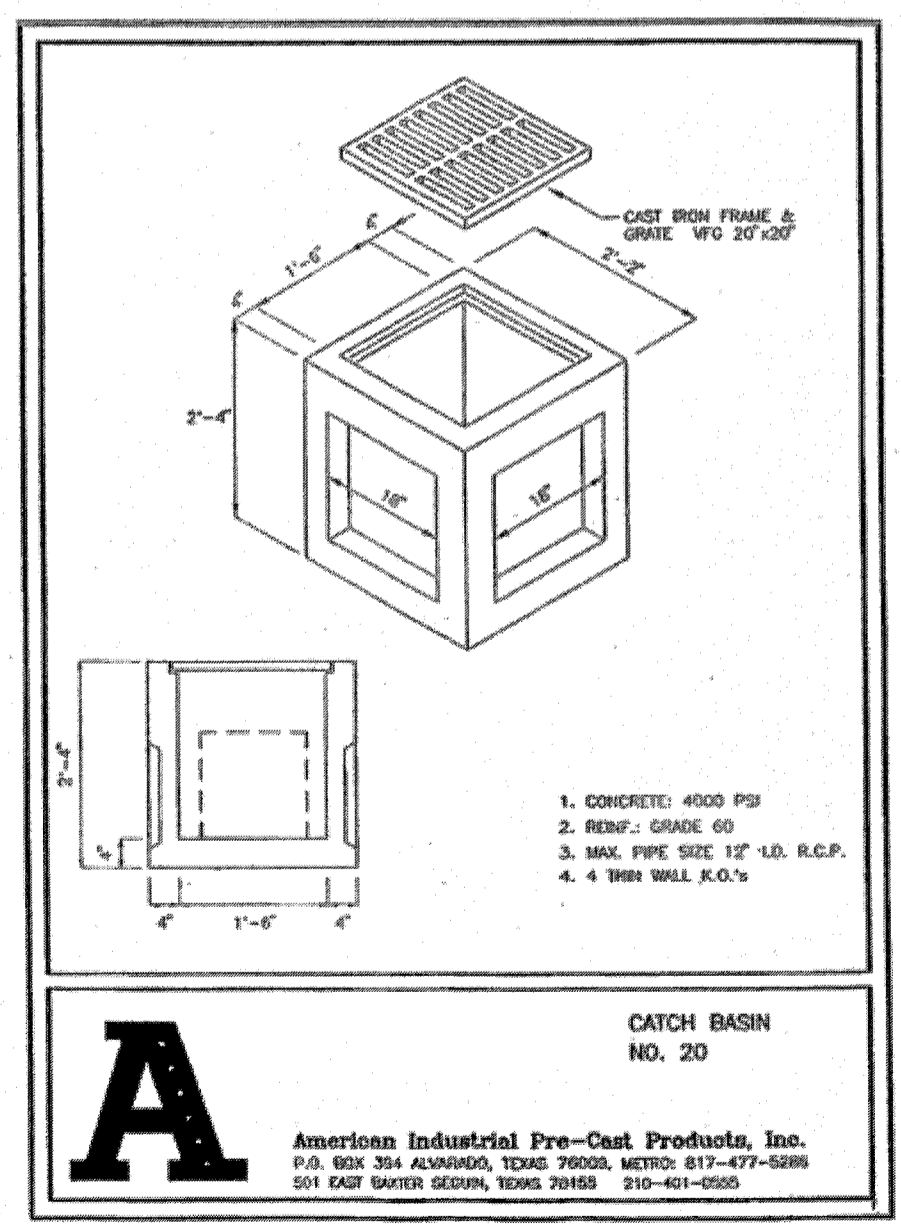


**LEGEND**

B.	BOLLARD	△	FLOOD LIGHT
EM	ELECTRIC METER	PP	FLAG POLE
PP	POWER POLE	SGN	TRAFFIC SIGN
LS	LIGHT STANDARD	IRS	1/2-INCH IRON ROD
WM	WATER METER	(C.M.)	W/PACHECO KOCH" CAP SET
WV	WATER VALVE		CONTROLLING MONUMENT
ICV	IRRIGATION CONTROL VALVE	---	PROPERTY LINE
FH	FIRE HYDRANT	-X-	FENCE
CO	CLEANOUT	OH	OVERHEAD UTILITY LINE
MH	MANHOLE	E	UNDERGROUND ELECTRIC LINE
TS	TRAFFIC SIGNAL CONTROL	T	UNDERGROUND TELEPHONE LINE
TSP	TRAFFIC SIGNAL POLE	C	UNDERGROUND CABLE LINE
TE	TELEPHONE BOX	6"W	UNDERGROUND WATER LINE
		6"SS	UNDERGROUND SANITARY SEWER LINE

**BENCH MARK LIST**

BM# 1	"+" SET IN BOX ON CURB INLET ON NORTHWEST CORNER OF ALAMO ST. AND GOULD ST. ELEV=574.54
BM# 2	"+" SET IN BOX ON BACK OF CURB ON SOUTH SIDE OF A CURB RETURN TO A PARKING LOT ON EAST SIDE OF FANNIN ST. ±7 FEET SOUTH OF OLIVE ST. ELEV=573.63
BM# 3	"+" SET IN BOX ON SOUTH WEST CORNER OF GOULDS ST. AND KAUFMAN ST. ±40 FEET WEST OF C. OF GOULD ST. AND ±25 FEET SOUTH OF C. OF KAUFMAN ELEV=587.41
BM# 4	"+" SET IN BOX ON NORTH EAST CORNER OF N. FANNIN ST. AND KAUFMAN ST. ±15 FEET NORTH OF C. OF KAUFMAN ST. AND ±30 FEET EAST FROM C. OF KAUFMAN ST. ELEV=578.80
BM# 5	"+" SET IN BOX ON NORTH WEST CORNER OF WASHINGTON ST. ON GOULD ST. ±40 FEET WEST OF C. OF GOULD ST. AND ±25 FEET NORTH OF C. OF WASHINGTON ST. ELEV=595.39
BM# 6	"+" SET IN BOX SOUTH EAST CORNER OF WASHINGTON ST. AND FANNIN ST ±22 FEET OF C. OF FANNIN ST. AND ±45 FEET SOUTH OF C. OF WASHINGTON ST. ELEV=580.69



THE SEAL APPEARING ON THIS DOCUMENT WAS AUTHORIZED BY CHRISTOPHER M. JONES, P.E. 82881 ON 05/12/14. ALTERATION OF A SEALED DOCUMENT WITHOUT PROPER NOTIFICATION TO THE RESPONSIBLE ENGINEER IS AN OFFENSE UNDER THE TEXAS ENGINEERING PRACTICE ACT.

**sheet location KEY MAP**

