

submittals / revisions

no.	date	detail
△	4/10/14	RFI'S # 24, 65, & 74
△	4/18/14	RFI'S # 30 & 79
△	4/28/14	LOWERED LINE "ST-1"

la terra studio, inc.  
 12024  
 Its project number  
 02.26.2014  
 date  
 JHB  
 drawn by  
 CMJ  
 checked by  
 registration

sheet title  
**STORM DRAINAGE PLAN**  
 sheet number

**C6-4**  
**AS BUILT**  
 03/07/2016

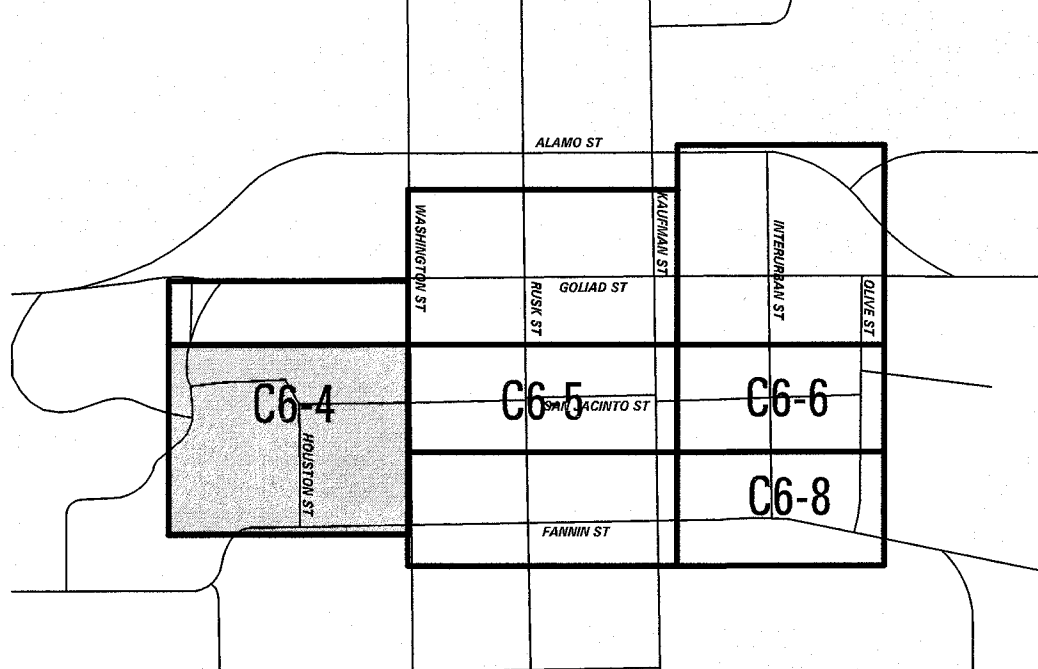
STORM SEWER CURVE DATA

C1	C2	C3
Δ=45°29'10"	Δ=35°53'47"	Δ=34°35'41"
T=16.77'	T=12.96'	T=12.46'
L=31.76'	L=25.06'	L=24.15'
R=40.00'	R=40.00'	R=40.00'

**BENCH MARK LIST**

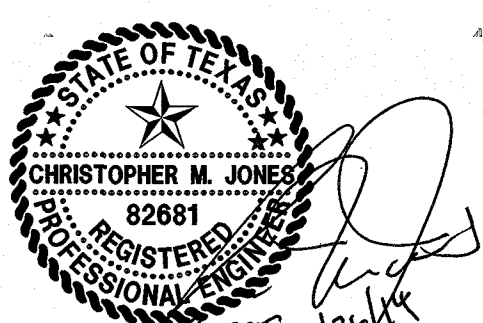
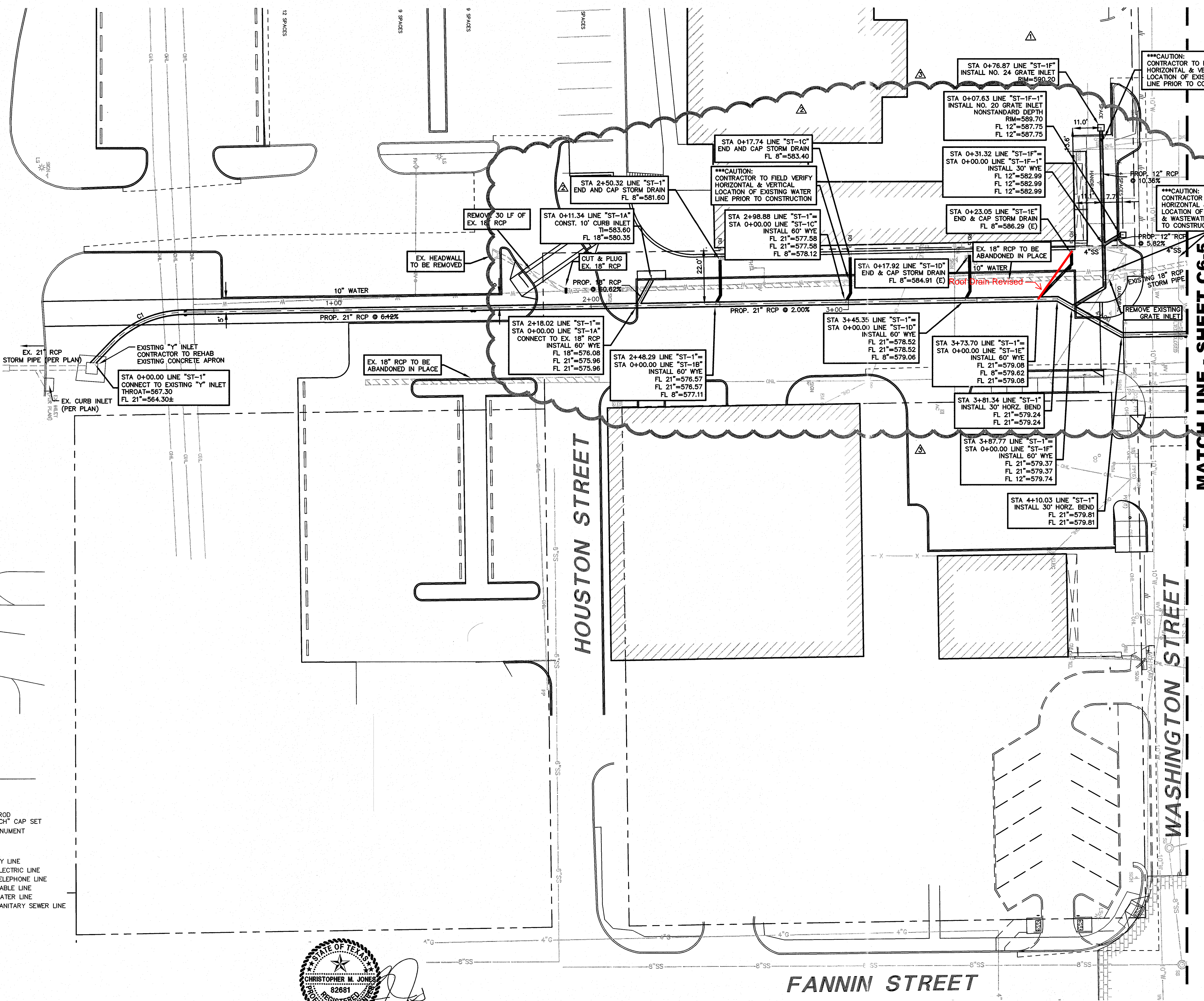
BM # 1	"+" SET IN BOX ON CURB INLET ON NORTHWEST CORNER OF ALAMO ST. AND GOLIAD ST. ELEV=574.54
BM # 2	"+" SET IN BOX ON BACK OF CURB ON SOUTH SIDE OF A CURB RETURN TO A PARKING LOTON EAST SIDE OF FANNIN ST. ±7 FEET SOUTH OF OLIVE ST. ELEV=573.63
BM # 3	"+" SET IN BOX ON SOUTH WEST CORNER OF GOLIAD ST. AND KAUFMAN ST. ±40 FEET WEST OF E. OF GOLIAD ST. AND ±25 FEET SOUTH OF E. OF KAUFMAN ELEV=587.41
BM # 4	"+" SET IN BOX ON NORTH EAST CORNER OF N. FANNIN ST. AND KAUFMAN ST. ±40 FEET WEST OF E. OF KAUFMAN ST. AND ±30 FEET EAST FROM E. OF KAUFMAN ST. ELEV=578.80
BM # 5	"+" SET IN BOX ON NORTH WEST CORNER OF WASHINGTON ST. ON GOLIAD ST. ±40 FEET WEST OF E. OF GOLIAD ST. AND ±25 FEET NORTH OF E. OF WASHINGTON ST. ELEV=595.39
BM # 6	"+" SET IN BOX SOUTH EAST CORNER OF WASHINGTON ST. AND FANNIN ST ±22 FEET OF E. OF FANNIN ST. AND ±45 FEET SOUTH OF E. OF WASHINGTON ST. ELEV=580.69

sheet location  
KEY MAP



LEGEND

B.	BOLLARD	JK	FLOOD LIGHT
EM	ELECTRIC METER	FP	FLAG POLE
PP	POWER POLE	SIGN	TRAFFIC SIGN
LS	LIGHT STANDARD	IRS	1/2-INCH IRON ROD W/ "PACHCO KOCH" CAP SET
WM	WATER METER	(C.M.)	CONTROLLING MONUMENT
WV	WATER VALVE	---	PROPERTY LINE
ICV	IRRIGATION CONTROL VALVE	-X-	FENCE
FH	FIRE HYDRANT	-OH-	OVERHEAD UTILITY LINE
CO	CLEANOUT	-E-	UNDERGROUND ELECTRIC LINE
MH	MANHOLE	-T-	UNDERGROUND TELEPHONE LINE
TSC	TRAFFIC SIGNAL CONTROL	-C-	UNDERGROUND CABLE LINE
TSP	TRAFFIC SIGNAL POLE	-6"W-	UNDERGROUND WATER LINE
TEL	TELEPHONE BOX	-6"SS-	UNDERGROUND SANITARY SEWER LINE



THE SEAL APPEARING ON THIS DOCUMENT WAS AUTHORIZED BY CHRISTOPHER M. JONES, P.E. 82681 ON 02/26/2014. ALTERATION OF A SEALED DOCUMENT WITHOUT PROPER NOTIFICATION TO THE RESPONSIBLE ENGINEER IS AN OFFENSE UNDER THE TEXAS ENGINEERING PRACTICE ACT.

