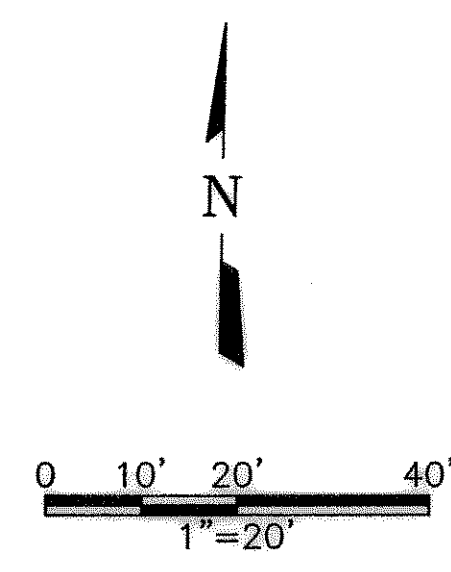


BENCHMARK:

- BM #1 CHISELED SQUARE CUT ON TOP OF CURB AT THE CENTERLINE OF A 6 FOOT CURB INLET, ON THE EAST SIDE OF HARLAN DR. APPROX. 70 FEET NORTH OF DALTON RD. ELEV=513.57
- BM #2 CHISELED SQUARE CUT ON TOP OF CURB ON THE WEST CURB LINE OF ODELL AVE., ON THE SOUTH DRIVE RETURN OF 7101 ODELL, 133 FEET NORTH OF THE CENTERLINE OF DALTON RD. ELEV=516.22

RECORD DRAWING
 BASED ON INFORMATION SUPPLIED BY THE CONTRACTOR
 TO: TRICIA H. HATLEY
 DATE: JANUARY 7, 2003

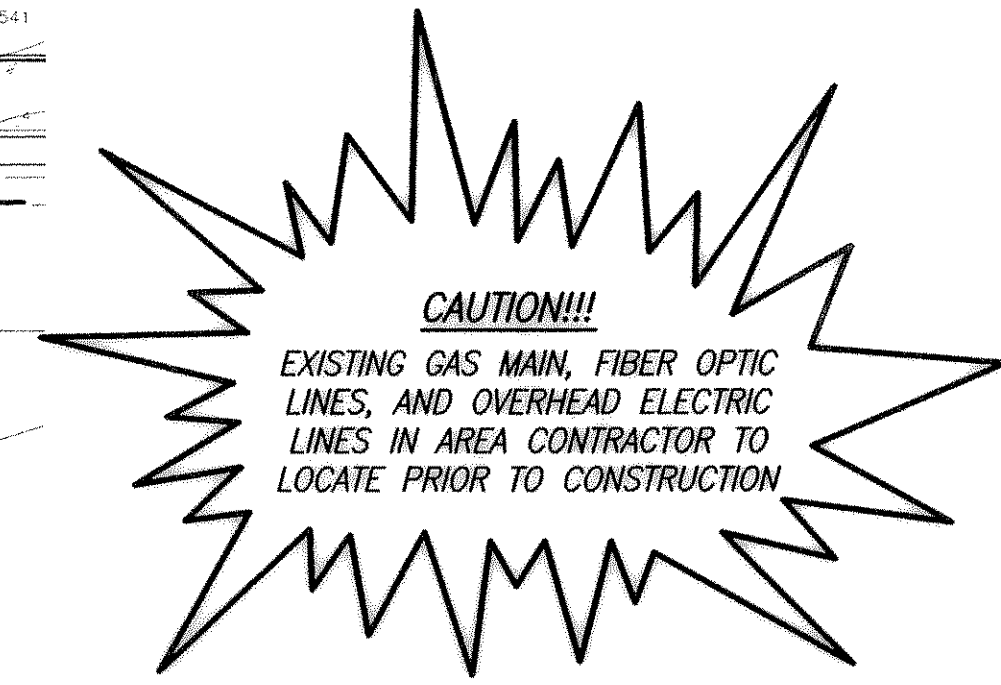
THIS DOCUMENT WAS ORIGINALLY SIGNED, SEALED AND DATED BY:
 ENGINEER: TRICIA H. HATLEY
 TEXAS REGISTRATION NO: 83282
 DATE: APRIL 5, 2002



NOTES:
 1. REFER TO SHEET SDDTL FOR ALL INLET AND MANHOLE DETAILS.

LEGEND

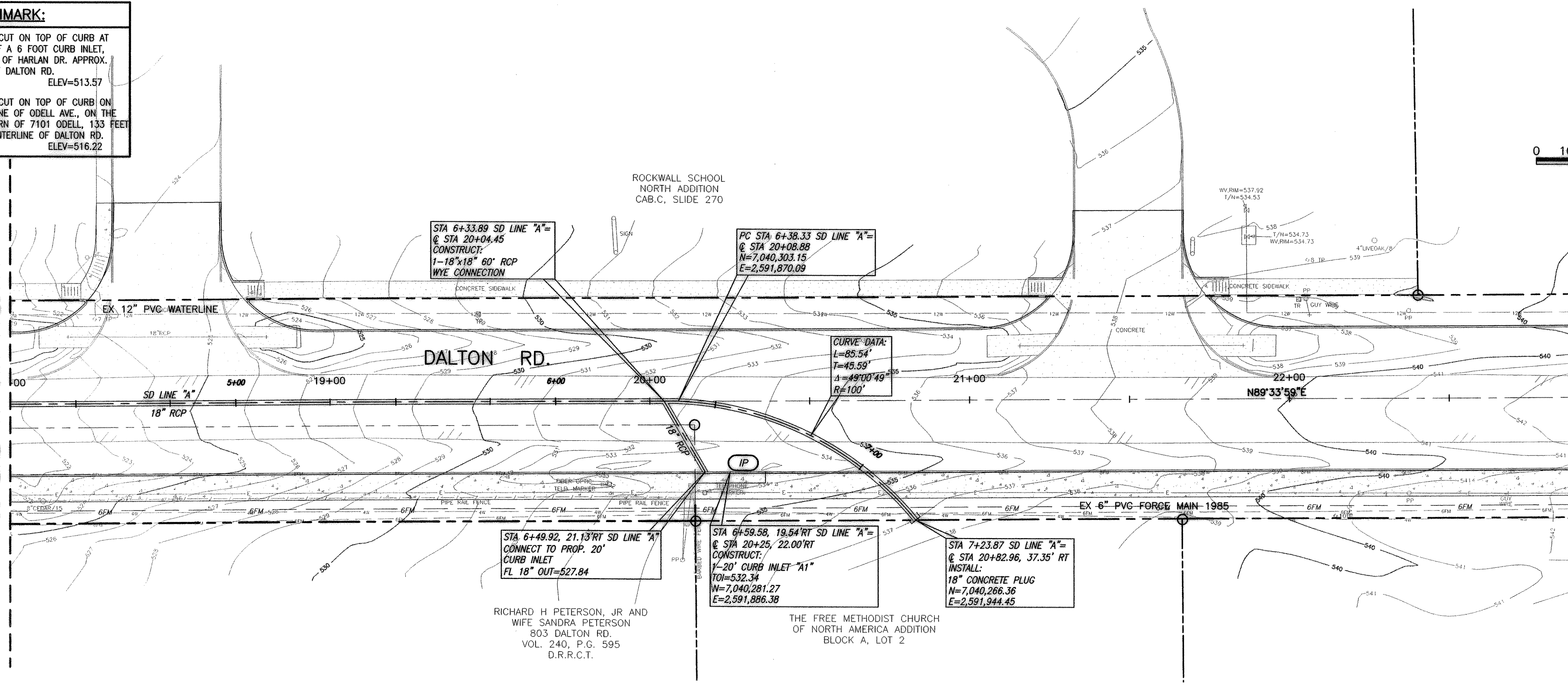
- 21+00 @ STATION LABELS
- 6+00 SD STATION LABELS
- IP INLET PROTECTION



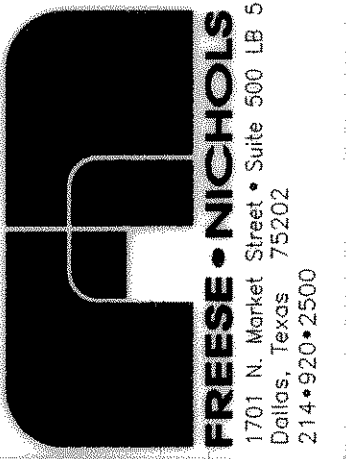
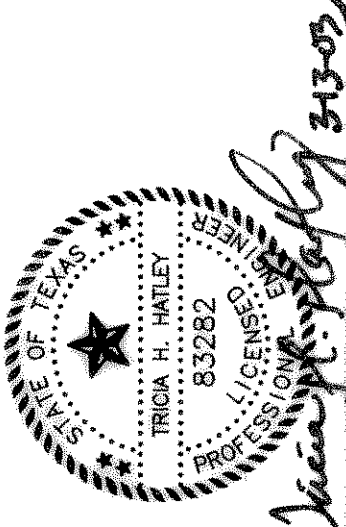
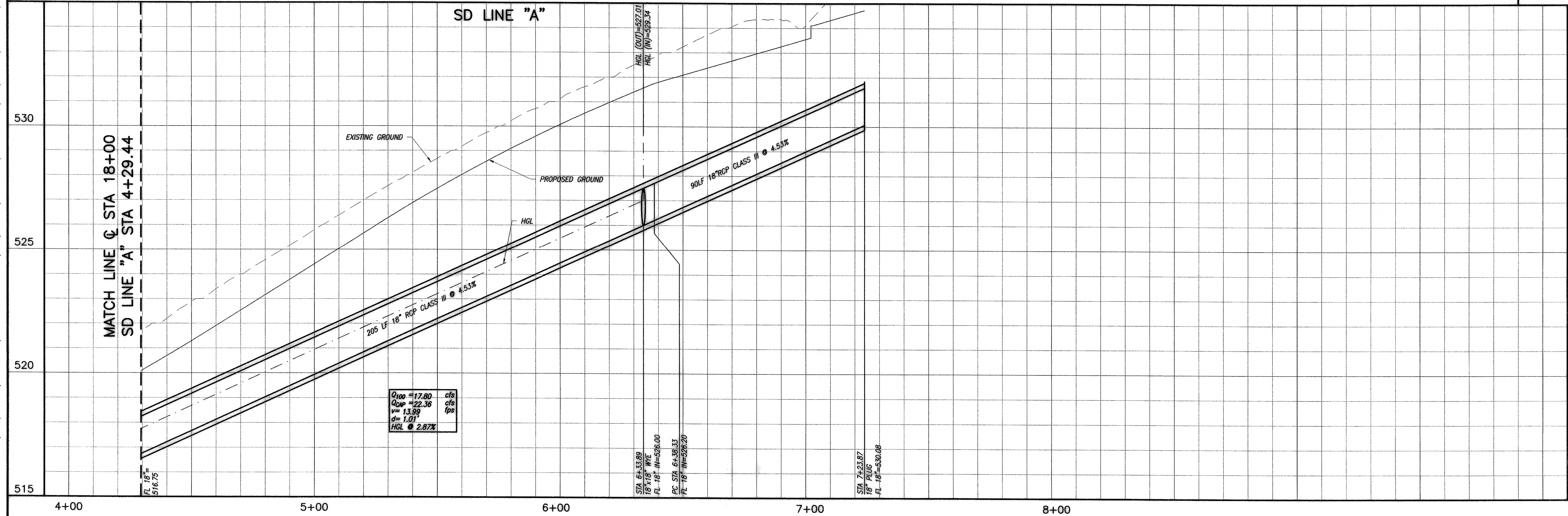
SCALE
 HORIZ: 1"=20'
 VERT: 1"=2'

MATCH LINE @ STA 18+00
 SD LINE "A" STA 4+29.44

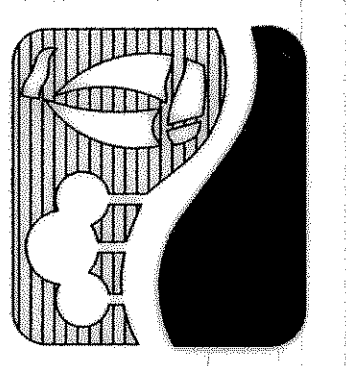
MATCH LINE @ STA 18+00
 SD LINE "A" STA 4+29.44



SD LINE "A"



CITY OF ROCKWALL
DALTON ROAD RECONSTRUCTION
 STORM DRAIN PLAN AND PROFILE
 LINE A



NO. REVISION	BY	DATE

FILE NO.	ROK01364
FILE	SD-PP3.dwg
DATE	10-29-2002
DESIGNED	KRJ/SDH
DRAWN	RCM
REVISION	
CHECKED	THH

ACAD Ref: 15.06s (LMS Tech) User: RGM
 [ROK01364\N\CAD\SHEETS\AS-BUILTS\SD-PP3.DWG LAYOUT: Layout1
 MAR 11, 2003 12:44:32 P.M. LTS: 1 FSLTS: 1 TWST: 0, 0, 0
 5 REFERENCE FILES: N:\CAD\SHEETS\AS-BUILTS\SD-BORDER, N:\CAD\SHEETS\AS-BUILTS\364-SITE, N:\CAD\SHEETS\AS-BUILTS\364-TOPO, N:\CAD\SHEETS\AS-BUILTS\PROFILE-LINE A and N:\ORIGINALS\02-TOPO