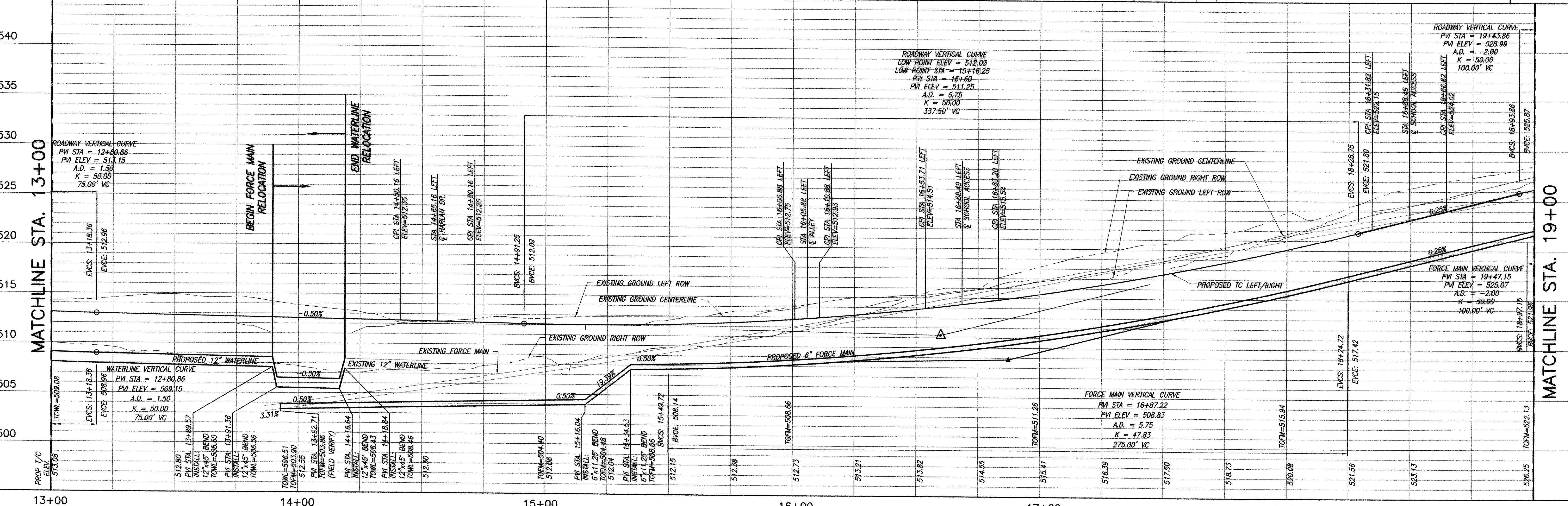
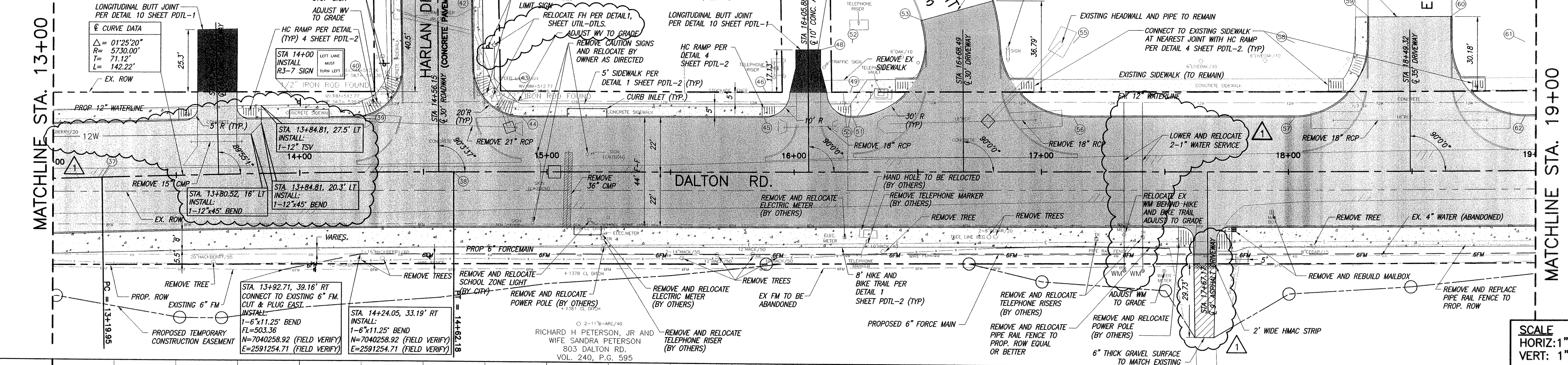
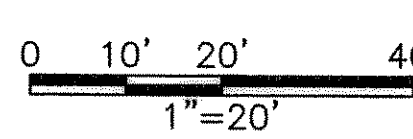


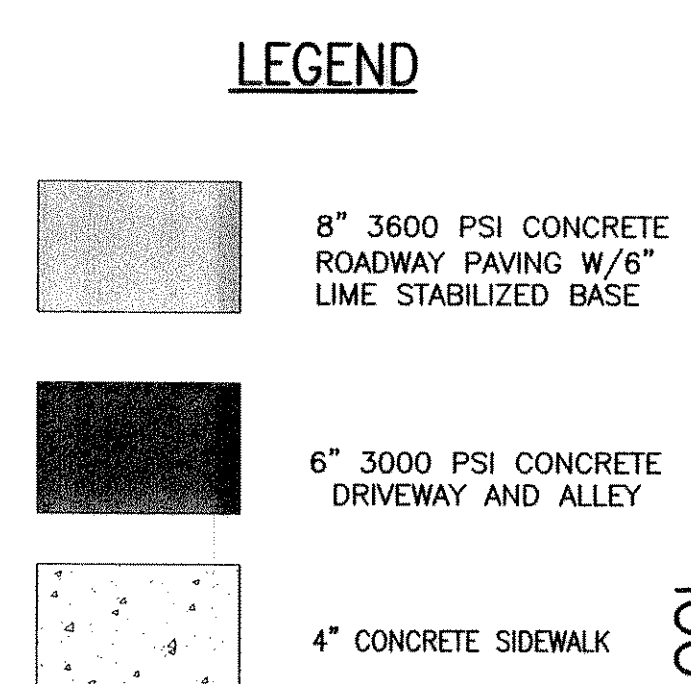
PT	NORTHING	EASTING	DESCRIPTION	ELEVATION
37	7,040,296.17	2,591,181.21	5730'R PT	513.03
38	7,040,299.01	2,591,323.40	5730'R PT	512.31
39	7,040,320.57	2,591,283.16	20'R PC	512.44
40	7,040,335.64	2,591,287.96	20'R CENTER	
41	7,040,371.65	2,591,302.31	END PAVEMENT	513.66
42	7,040,372.10	2,591,330.31	END PAVEMENT	513.66
43	7,040,336.19	2,591,345.96	20'R CENTER	
44	7,040,321.22	2,591,351.02	20'R PT	512.10
45	7,040,321.96	2,591,448.98	20'R PC	512.55
46	7,040,331.97	2,591,449.86	20'R CENTER	
47	7,040,349.38	2,591,461.72	END TRANSITION	514.55
48	7,040,349.46	2,591,471.72	END TRANSITION	514.55
49	7,040,332.23	2,591,483.85	10'R CENTER	
50	7,040,322.23	2,591,483.85	10'R PT	513.17
51	7,040,322.24	2,591,484.85	30'R PC	513.19
52	7,040,352.23	2,591,484.62	30'R CENTER	
53	7,040,364.85	2,591,512.78	END PAVEMENT	MATCH EXISTING
54	7,040,369.62	2,591,541.18	END PAVEMENT	MATCH EXISTING
55	7,040,352.91	2,591,574.01	30'R CENTER	
56	7,040,322.91	2,591,574.23	30'R PT	515.91
57	7,040,323.59	2,591,663.74	30'R PC	520.24
58	7,040,353.59	2,591,663.52	30'R CENTER	
59	7,040,364.21	2,591,693.57	END PAVEMENT	MATCH EXISTING
60	7,040,364.47	2,591,726.70	END PAVEMENT	MATCH EXISTING
61	7,040,354.29	2,591,756.76	30'R CENTER	
62	7,040,324.29	2,591,756.99	30'R PT	526.00



NOTE:
1. REFER TO SHEET SDPP-2 FOR STORM DRAIN PLAN AND PROFILE



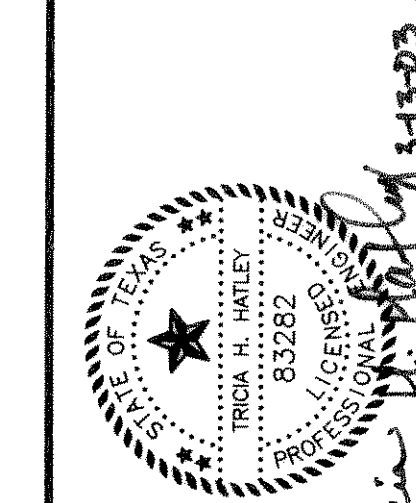
BENCHMARK:
 BM #1 CHISELED SQUARE CUT ON TOP OF CURB AT THE CENTERLINE OF A 6 FOOT CURB INLET, ON THE EAST SIDE OF HARLAN DR. APPROX. 70 FEET NORTH OF DALTON RD. ELEV=513.57
 BM #2 CHISELED SQUARE CUT ON TOP OF CURB ON THE WEST CURB LINE OF ODELL AVE., ON THE SOUTH DRIVE RETURN OF 7101 ODELL, 133 FEET NORTH OF THE CENTERLINE OF DALTON RD. ELEV=516.22



RECORD DRAWING
 BASED ON INFORMATION SUPPLIED BY THE CONTRACTOR
 TO: TRICIA H. HATLEY
 DATE: JANUARY 7, 2003

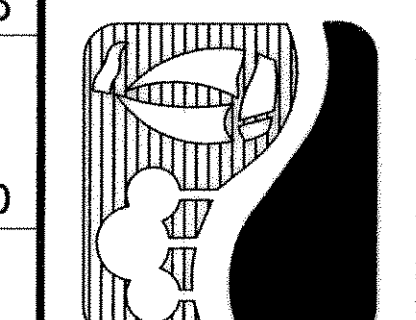
THIS DOCUMENT WAS ORIGINALLY SIGNED, SEALED AND DATED BY:
 ENGINEER: TRICIA H. HATLEY
 TEXAS REGISTRATION NO. 83282
 DATE: APRIL 17, 2002

THE SEAL OF:
 TRICIA H. HATLEY, P.E.
 TEXAS NO. 83282
 APPLIES TO THE CONSTRUCTION CHANGES NOTED.



FREESE-NICHOLS
 1701 N. Market Street, Suite 500, LB 51
 Dallas, Texas 75202
 214-920-2500

CITY OF ROCKWALL
DALTON ROAD RECONSTRUCTION
 PAVING PLAN AND PROFILE
 STA 13+00 TO STA 19+00



NO. REVISION	DATE	BY	REASON
1	3/13/03	KRJ	CONST. CHANGES PER CONTRACTOR
2			DESIGNED: KRJ, SDH
3			DRAWN: JUS
4			REVISED: JUS
5			CHECKED: THH

FILE: PPS3.dwg
 DATE: 10-29-2002
 DRAWN: JUS
 REVISED: JUS
 CHECKED: THH

Bar is one inch on original drawing. If not one inch on this sheet, adjust scale.

VERIFY SCALE