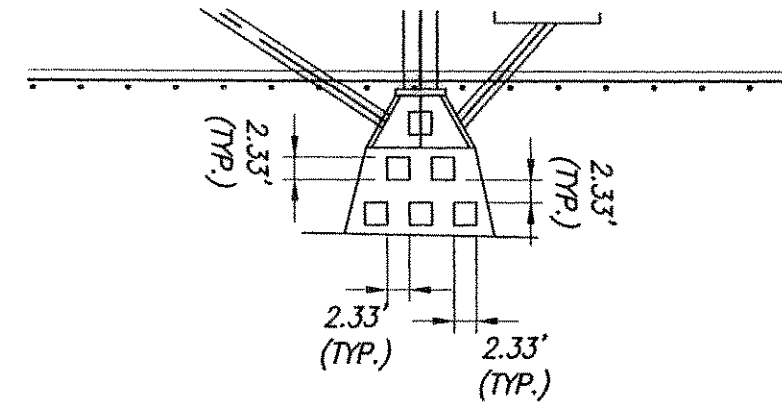


BENCHMARK:

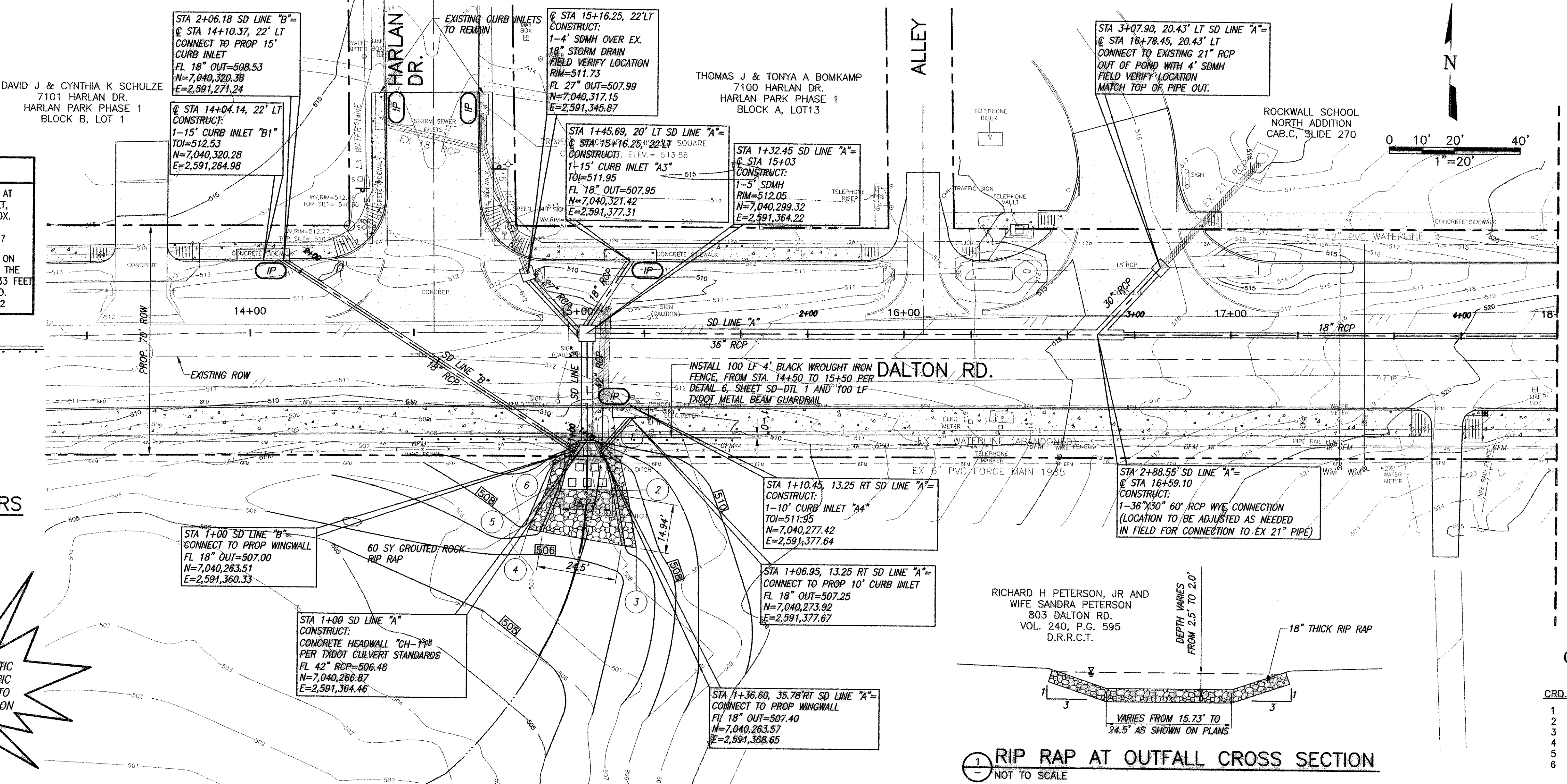
BM #1 CHISELED SQUARE CUT ON TOP OF CURB AT THE CENTERLINE OF A 6 FOOT CURB INLET, ON THE EAST SIDE OF HARLAN DR. APPROX. 70 FEET NORTH OF DALTON RD. ELEV=513.57

BM #2 CHISELED SQUARE CUT ON TOP OF CURB ON THE WEST CURB LINE OF ODELL AVE., ON THE SOUTH DRIVE RETURN OF 7101 ODELL, 133 FEET NORTH OF THE CENTERLINE OF DALTON RD. ELEV=516.22



ENERGY DISSIPATORS
SCALE: 1"=20'

CAUTION!!!
EXISTING GAS MAIN, FIBER OPTIC LINES, AND OVERHEAD ELECTRIC LINES IN AREA CONTRACTOR TO LOCATE PRIOR TO CONSTRUCTION



RECORD DRAWING
BASED ON INFORMATION SUPPLIED BY THE CONTRACTOR
TO: TRICIA H. HATLEY
DATE: JANUARY 7, 2003

THIS DOCUMENT WAS ORIGINALLY SIGNED, SEALED AND DATED BY:
ENGINEER: TRICIA H. HATLEY
TEXAS REGISTRATION NO: 83282
DATE: APRIL 17, 2002

NOTES:

- REFER TO SHEET SDDTL FOR ALL INLET AND MANHOLE DETAILS.
- REFER TO SHEET DAMAP FOR DRAINAGE CALCS.

LEGEND

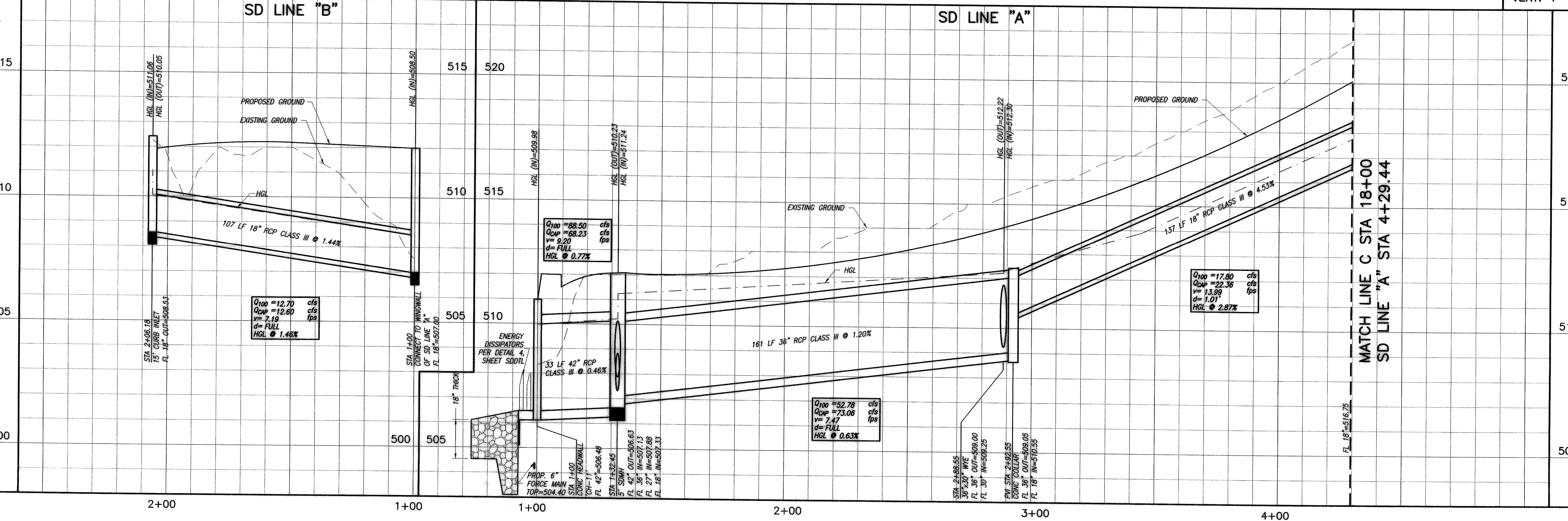
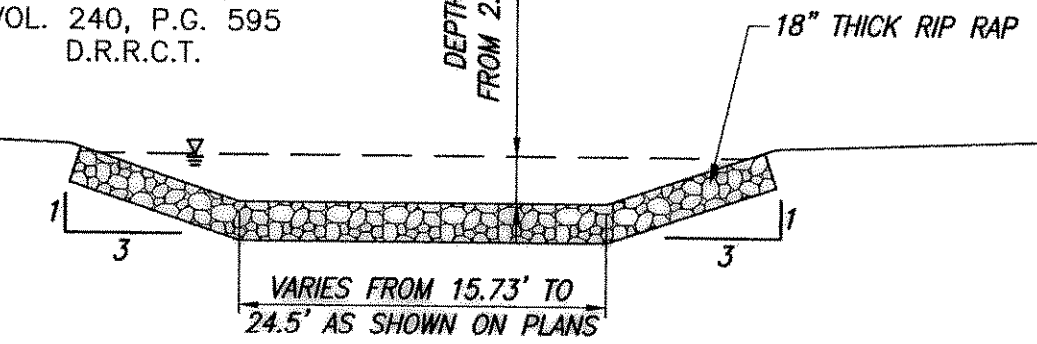
- 13+00 @ STATION LABELS
- 2+00 SD STATION LABELS
- IP INLET PROTECTION
- EXISTING DITCH LINE
- - - PROPOSED DITCH LINE

COORDINATE TABLE FOR RIP RAP

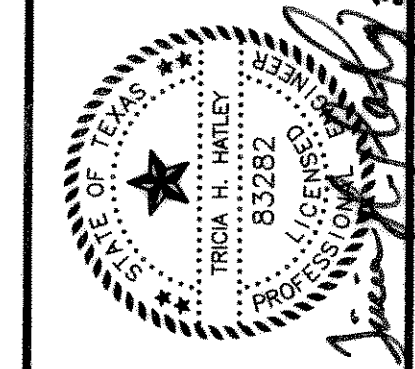
CRD.#	NORTHING	EASTING
1	7,040,260.88	2,591,374.63
2	7,040,251.75	2,591,376.74
3	7,040,234.28	2,591,379.73
4	7,040,239.59	2,591,346.66
5	7,040,251.98	2,591,352.18
6	7,040,260.87	2,591,354.39

SCALE
HORIZ: 1"=20'
VERT: 1"=2'

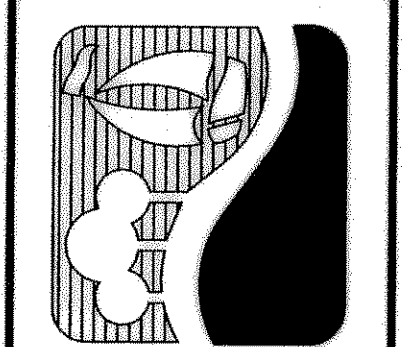
RIP RAP AT OUTFALL CROSS SECTION
NOT TO SCALE



MATCH LINE C STA 18+00
SD LINE "A" STA 4+29.44



CITY OF ROCKWALL
DALTON ROAD RECONSTRUCTION
STORM DRAIN PLAN AND PROFILE
LINE A AND LINE B



NO.	REVISION	DATE	BY	CHKD

NO.	REVISION	DATE	BY	CHKD

SHEET **SDPP-2**
SEQ. 16 OF 19

RECORD DRAWINGS

ACAD: Rel 15.06s (LMS Tech) User: RGM
 ROKO1364.N:\CAD\PROJECTS\AS-BUILTS\SD-PP2.DWG LAYOUT: Layout1
 PLOT: 12:42:16 P.M. LISTS: 1
 PSLTS: 1
 5. REFERENCE FILES: N:\CAD\PROJECTS\AS-BUILTS\364-SITE, N:\CAD\PROJECTS\AS-BUILTS\364-TOP, N:\CAD\PROJECTS\AS-BUILTS\PROFILE-LINE A, N:\CAD\PROJECTS\AS-BUILTS\PROFILE-LINE B