

LOT I, BLOCK A
LOVE'S ADDITION NO. 1
CAB. D, SL. 293-294
P.R.R.C.T.

28.57' LT ST STA 43+65.67
CONNECT TO EXISTING 12" W.L.
INSTALL:
1 - 12" x 12" TAPPING SLEEVE & VALVE
PLUS THRUST BLOCK
N = 7022796.11
E = 2607210.05

36.56' LT ST STA 43+53.84
CONNECT TO EXISTING
10" SANITARY SEWER STUB
E = 565.00 ±
N = 7022784.28
E = 2607202.10

33.50' LT ST STA 43+53.83
CONSTRUCT 10 LF OF CONCRETE
ENCASEMENT PER DETAIL THIS SHEET
CENTERED ON W.L. CROSSING
N = 7022784.21
E = 2607210.17

HITT FAMILY
LIMITED PARTNERSHIP
VOL. 1875, PG. 238
D.R.R.C.T.

THE WHITMORE
MANUFACTURING COMPANY
INST#D2010-00432707
D.R.R.C.T.

49.12' RT ST STA 43+64.76
E (FUTURE 30') = 573.63±
MAX. TOP OF PROPOSED
12" W.L. = 571.00

55.58' RT ST STA 43+64.69
END PROPOSED 12" W.L.
INSTALL:
1 - 12" CAP W/RETAINER GLANDS
N = 7022795.40
E = 2607294.21

55.44' RT ST STA 43+52.79
END PROPOSED 10" S.S.
E = 565.92
INSTALL:
1 - 10" PLUG
N = 7022783.50
E = 2607294.11

MARIAH BAY
DEVELOPMENT, INC.
VOL. 2358, PG. 265
D.R.R.C.T.

FUTURE 30" RCP
BY C.P. & Y.

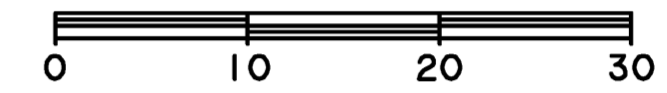
HITT FAMILY PARTNERSHIP
VOL. 1875, PG. 235
D.R.R.C.T.

PROPOSED
CURB INLET

PROPOSED
S.D. LINE 'A'

CAUTION !!

EXISTING UTILITIES ARE INDICATED ON THE PLANS FROM AVAILABLE INFORMATION. IT SHALL BE THE RESPONSIBILITY OF THE CONTRACTOR TO VERIFY THE LOCATION OF ALL UTILITIES, TO NOTIFY ALL UTILITY COMPANIES OF THE CONTRACTORS OPERATIONS, TO PROTECT ALL UTILITIES FROM DAMAGE, TO REPAIR ALL UTILITIES DAMAGED DUE TO THE CONTRACTORS OPERATIONS, AND TO NOTIFY THE ENGINEER PROMPTLY OF ALL CONFLICTS OF THE WORK WITH EXISTING UTILITIES.



*** BENCH MARKS ***

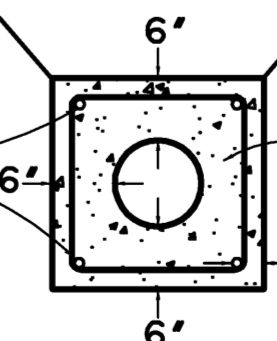
BM A AN "X" CUT IN CONCRETE PAD OF A WATER VALVE MANHOLE LOCATED +/- 55' EAST OF THE EDGE OF PAVEMENT OF FM 549 AND +/- 150' SOUTH OF THE EDGE OF PAVEMENT OF SH 276. 595.66 FT. N 7018916.83, E 2607403.98

BM B AN "X" CUT IN A LIGHT POLE BASE +/- 40' WEST OF THE EDGE OF PAVEMENT OF CORPORATE CROSSING AND +/- 0.30 MILES SOUTH OF THE EDGE OF PAVEMENT OF IH 30. 581.56 FT. N 7022945.40, E 2607163.95

NOTES:

1. CONTRACTOR SHALL VERIFY LOCATIONS OF ALL EXISTING UTILITIES PRIOR TO CONSTRUCTION AND NOTIFY ENGINEER IMMEDIATELY OF ANY DISCREPANCIES.

HORIZONTAL REINFORCING BARS TO BE SPACED EQUAL SPACING AROUND PERIMETER OF PIPE AND TIED AT 4' INTERVALS



CLASS 'A' CONCRETE ENCASEMENT
ENCASEMENT
(6" MINIMUM)
3" MIN.

6" & 8" PIPE: 4 - #4 HORIZONTAL REINFORCING BARS WITH TIE RODS
10" & 12" PIPE: 4 - #5 HORIZONTAL REINFORCING BARS WITH TIE RODS
15", 16" & 18" PIPE: 8 - #5 HORIZONTAL REINFORCING BARS WITH TIE RODS
20", 21", 24", 27" & 30" PIPE: 8 - #6 HORIZONTAL REINFORCING BARS WITH TIE RODS

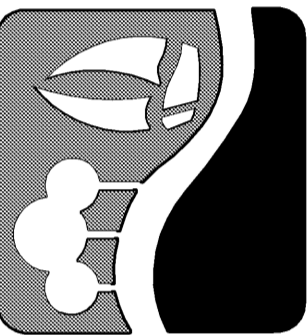
CONCRETE ENCASEMENT

N.T.S.

**RECORD
DRAWING
10/11/2013**

TO THE BEST OF OUR KNOWLEDGE WIER & ASSOCIATES, INC., HERBY STATES THAT THIS PLAN IS AS-BUILT. THIS INFORMATION PROVIDED IS BASED ON SURVEYING AT THE SITE AND INFORMATION PROVIDED BY THE CONTRACTOR.

PREPARED BY:
WIER & ASSOCIATES, INC.
ENGINEERS SURVEYORS LAND PLANNERS
701 HIGHLANDER BLVD., SUITE 300 ARLINGTON, TEXAS 76015 METRO (817)467-7700
www.WierAssociates.com
Texas Firm Registration No. F-2776



**CITY OF ROCKWALL
IMPROVEMENTS TO
CORPORATE CROSSING
(FROM S.H. 276 TO I.H. 30)**

UTILITY PLAN



COPYRIGHT ©
WIER & ASSOCIATES, INC.
LAST SHEET EDIT
DATE: 09-13-2013
WA# 08029

**SHEET NO.
U102**