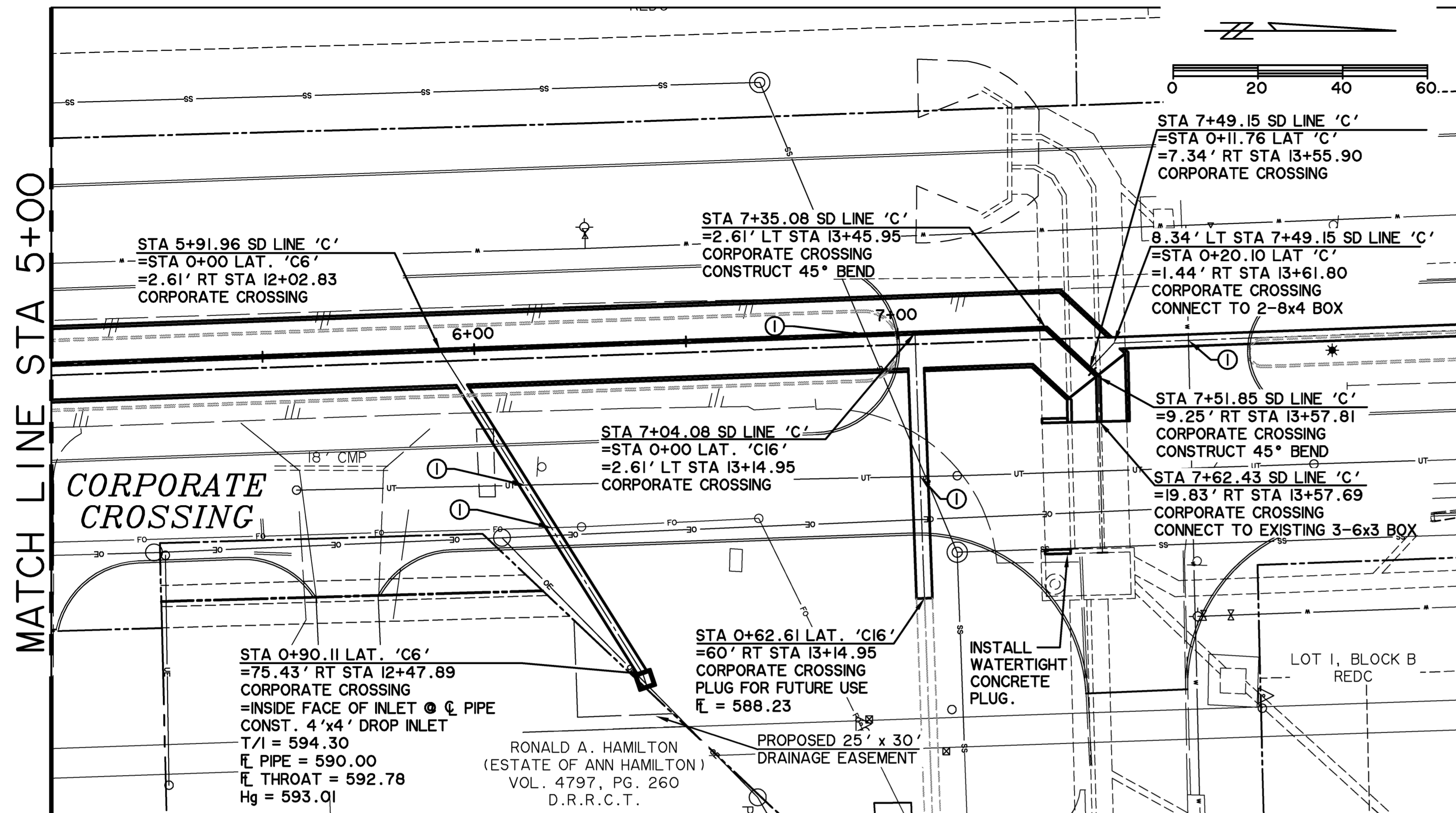
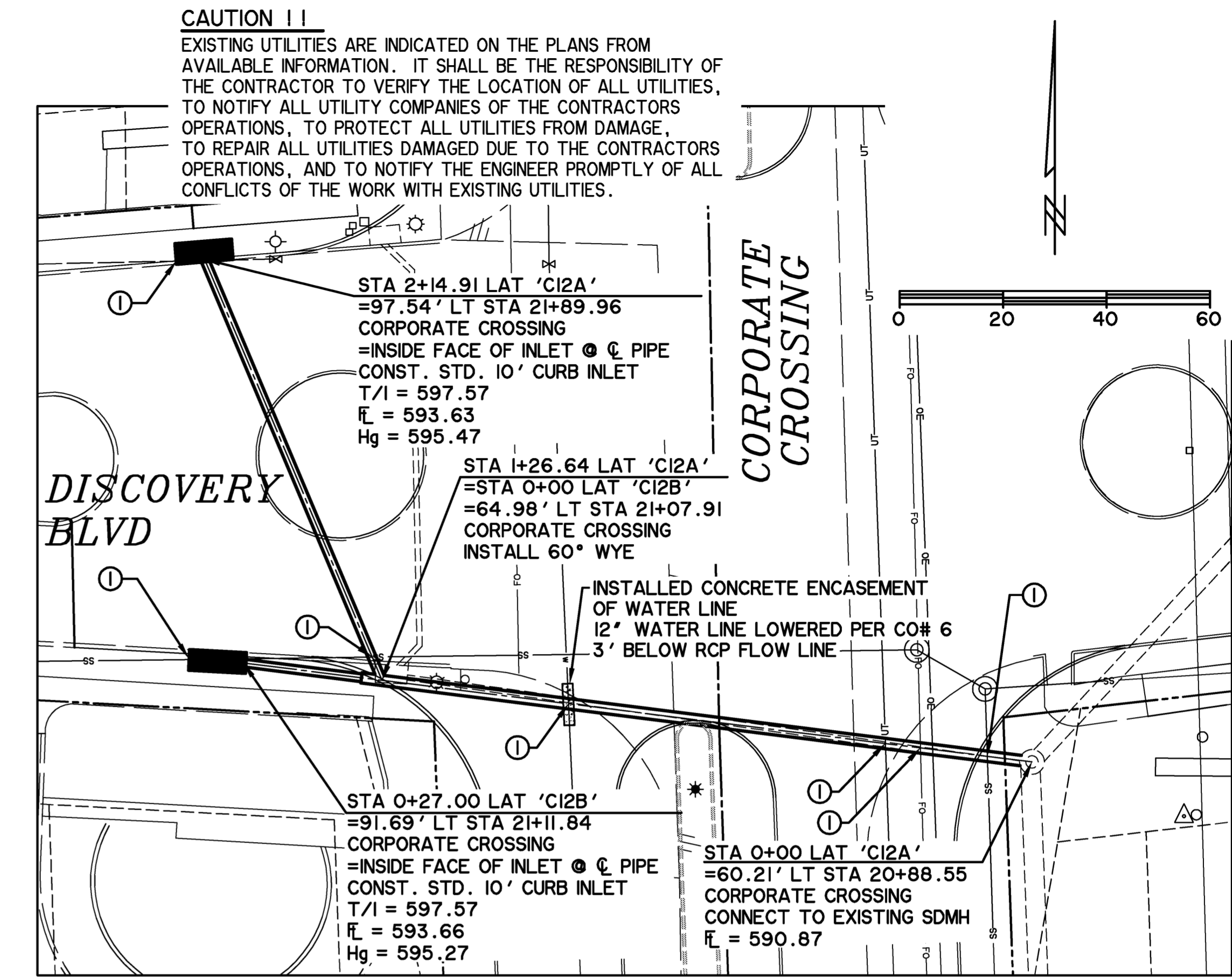


TIME 10:42 FILE: D106-SD-LN-C.dwg



STORM DRAIN LINE 'C'



LAT 'C12A' & 'C12B'

PROP. OF PIPE	567.25	567.40	567.55	567.70	567.85	568.00	PROP. OF PIPE									
5+00		6+00		7+00		8+00										
31 LF OF 2-8x4 BOX @ 0.32% Q ₁₀₀ = 212.2 cfs Q _c = 535.4 cfs S _f = 0.06% V = 3.3 fps V ² /2g = 0.17'	14 LF OF 2-8x4 BOX @ 0.28% Q ₁₀₀ = 212.7 cfs Q _c = 488.9 cfs S _f = 0.06% V = 3.3 fps V ² /2g = 0.17'	21 LF OF 2-8x4 BOX @ 0.37% Q ₁₀₀ = 196.3 cfs Q _c = 573.5 cfs S _f = 0.04% V = 3.1 fps V ² /2g = 0.15'	11 LF OF 2-6x4 BOX @ 0.28% Q ₁₀₀ = 196.3 cfs Q _c = 353.0 cfs S _f = 0.10% V = 4.1 fps V ² /2g = 0.26'	H.G. = 592.49 k _j = 0.50 h _j = 0.09 H.G. = 592.40 H.G. = 592.59 k _j = 0.50 h _j = 0.09 H.G. = 592.50	H.G. = 592.38 k _j = 0.50 h _j = 0.20 H.G. = 592.18	H.G. = 592.66 k _j = 0.50 h _j = 0.07 H.G. = 592.59	H.G. = 592.74									
92 LF OF 2-8x4 BOX @ 0.30% Q ₁₀₀ = 282.2 cfs Q _c = 516.4 cfs S _f = 0.10% V = 4.4 fps V ² /2g = 0.30'	113 LF OF 2-8x4 BOX @ 0.29% Q ₁₀₀ = 276.7 cfs Q _c = 507.7 cfs S _f = 0.10% V = 4.3 fps V ² /2g = 0.29'	31 LF OF EXISTING 2-6x3 BOX Q ₁₀₀ = 196.5 cfs S _f = 0.23% V = 5.5 fps V ² /2g = 0.47'	EXISTING 3-6x3 BOX EXISTING 10'x20' J-BOX	EXISTING TELE	EXISTING 8" SS	EXISTING 8" SS	EXISTING 8" SS									
STA 5+91.96 SD LINE 'C' = STA 0+00 LAT. 'C6' = 2.61' RT STA 12+02.83 CORPORATE CROSSING	STA 7+35.08 SD LINE 'C' = 2.61' LT STA 13+45.95 CORPORATE CROSSING CONSTRUCT 45° BEND	STA 7+49.15 SD LINE 'C' = STA 0+11.76 LAT 'C' = 7.34' RT STA 13+55.90 CORPORATE CROSSING	STA 7+04.08 SD LINE 'C' = STA 0+00 LAT. 'C16' = 2.61' LT STA 13+14.95 CORPORATE CROSSING	STA 7+51.85 SD LINE 'C' = 9.25' RT STA 13+57.81 CORPORATE CROSSING CONSTRUCT 45° BEND	STA 7+62.43 SD LINE 'C' = 19.83' RT STA 13+57.69 CORPORATE CROSSING CONNECT TO EXISTING 3-6x3 BOX	STA 0+90.11 LAT. 'C6' = 75.43' RT STA 12+47.89 CORPORATE CROSSING = INSIDE FACE OF INLET @ C PIPE CONST. 4'x4' DROP INLET T/I = 594.30 R PIPE = 590.00 R THROAT = 592.78 Hg = 593.01	STA 0+62.61 LAT. 'C16' = 60' RT STA 13+14.95 CORPORATE CROSSING PLUG FOR FUTURE USE R = 588.23	INSTALL WATERTIGHT CONCRETE PLUG.	LOT I, BLOCK B REDC	PROPOSED 25' x 30' DRAINAGE EASEMENT	RONALD A. HAMILTON (ESTATE OF ANN HAMILTON) VOL. 4797, PG. 260 D.R.R.C.T.	STA 2+14.91 LAT 'C12A' = 97.54' LT STA 21+89.96 CORPORATE CROSSING = INSIDE FACE OF INLET @ C PIPE CONST. STD. 10' CURB INLET T/I = 597.57 R = 593.63 Hg = 595.47	STA 1+26.64 LAT 'C12A' = STA 0+00 LAT 'C12B' = 64.98' LT STA 21+07.91 CORPORATE CROSSING INSTALL 60° WYE	INSTALLED CONCRETE ENCASUREMENT OF WATER LINE 12" WATER LINE LOWERED PER CO# 6 3' BELOW RCP FLOW LINE	STA 0+27.00 LAT 'C12B' = 91.69' LT STA 21+11.84 CORPORATE CROSSING = INSIDE FACE OF INLET @ C PIPE CONST. STD. 10' CURB INLET T/I = 597.57 R = 593.66 Hg = 595.27	STA 0+00 LAT 'C12A' = 60.21' LT STA 20+88.55 CORPORATE CROSSING CONNECT TO EXISTING SDMH R = 590.87

NOTES FOR WORK IN NTMWD EASEMENT:

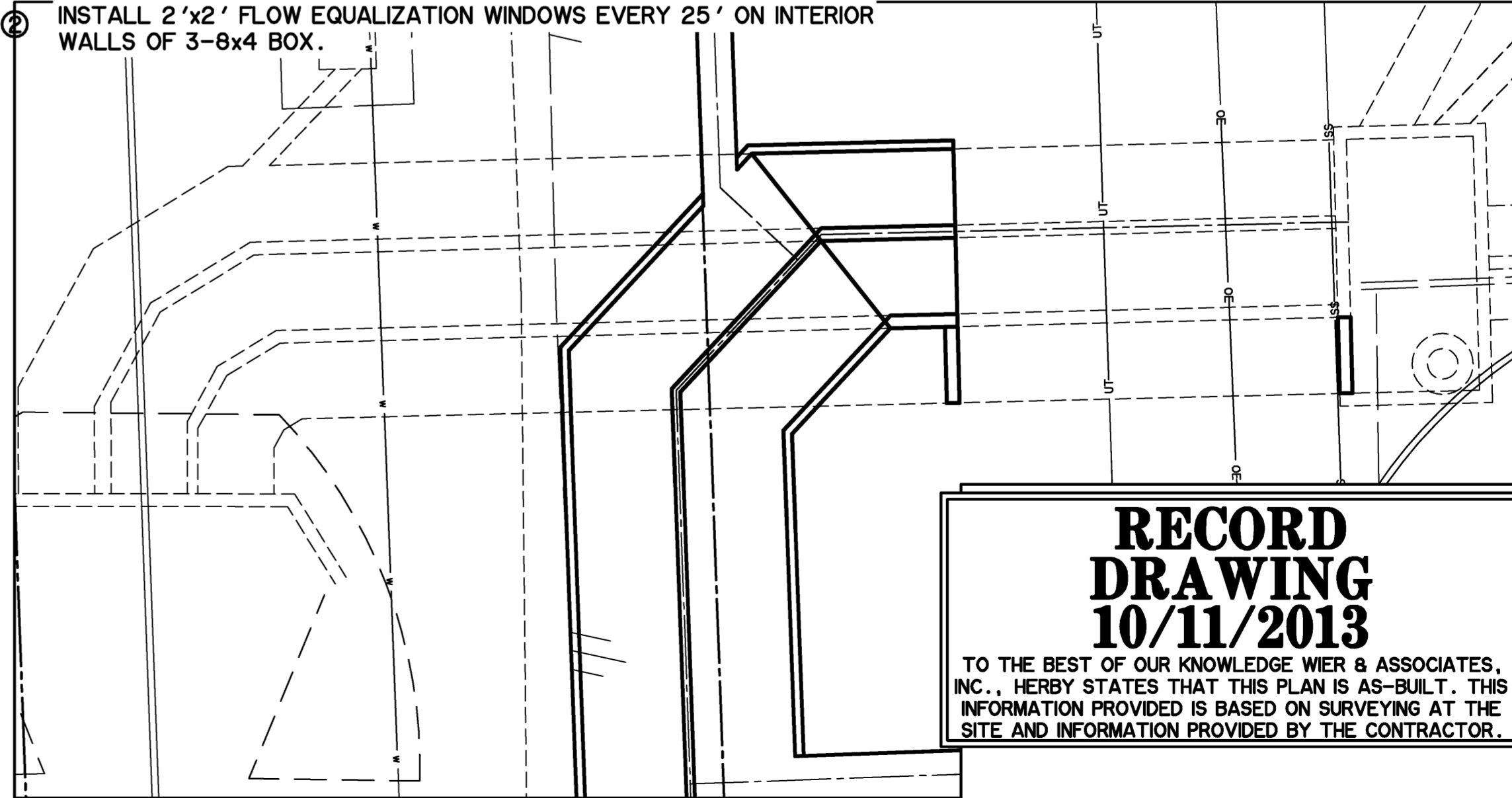
- CONTACT PAUL LYDAY, NTMWD ENGINEERING @ 972-442-5405 48 HOURS IN ADVANCE OF ANY WORK WITHIN NTMWD EASEMENT
- FRANCHISE AND PUBLIC UTILITIES ARE NOT PERMITTED IN NTMWD EASEMENT EXCEPT FOR CROSSINGS
- CONTRACTOR SHALL TAKE CARE TO AVOID DAMAGE TO EXISTING PIPELINE WHEN WORKING IN NTMWD EASEMENT. ANY DAMAGE TO PIPELINE RESULTING FROM CONSTRUCTION ACTIVITIES SHALL BE REPAIRED BY CONTRACTOR TO THE SATISFACTION OF NTMWD AT CONTRACTOR'S EXPENSE.

- NOTES:
- CONTRACTOR SHALL FIELD VERIFY ALL UTILITY CROSSINGS PRIOR TO CONSTRUCTION AND SHALL NOTIFY ENGINEER OF ANY DISCREPANCIES IMMEDIATELY.
 - INSTALL 2'x2' FLOW EQUALIZATION WINDOWS EVERY 25' ON INTERIOR WALLS OF 3-8x4 BOX.

*** BENCH MARKS ***

BM A AN "□" CUT IN CONCRETE PAD OF A WATER VALVE MANHOLE LOCATED +/- 55' EAST OF THE EDGE OF PAVEMENT OF FM 549 AND +/- 150' SOUTH OF THE EDGE OF PAVEMENT OF SH 276. 595.66 FT. N 7018916.83, E 2607403.98

BM B AN "□" CUT IN A LIGHT POLE BASE +/- 40' WEST OF THE EDGE OF PAVEMENT OF CORPORATE CROSSING AND +/- 0.30 MILES SOUTH OF THE EDGE OF PAVEMENT OF IH 30. 581.56 FT. N 7022945.40, E 2607163.95

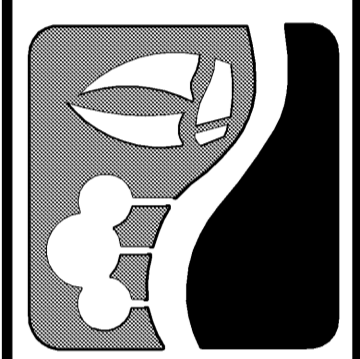


BOX CULVERT TRANSITION DETAIL

RECORD DRAWING
10/11/2013

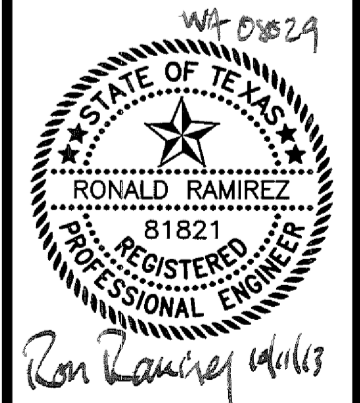
TO THE BEST OF OUR KNOWLEDGE WIER & ASSOCIATES, INC., HERBY STATES THAT THIS PLAN IS AS-BUILT. THIS INFORMATION PROVIDED IS BASED ON SURVEYING AT THE SITE AND INFORMATION PROVIDED BY THE CONTRACTOR.

PREPARED BY:
WIER & ASSOCIATES, INC.
ENGINEERS SURVEYORS LAND PLANNERS
701 HIGHLANDER BLVD., SUITE 300 ARLINGTON, TEXAS 76015 METRO (817)467-7700
www.WierAssociates.com
Texas Firm Registration No. F-2776



CITY OF ROCKWALL
IMPROVEMENTS TO
CORPORATE CROSSING
(FROM S.H. 276 TO I.H. 30)

STORM DRAIN LINE 'C'
STA 5+00 TO END



COPYRIGHT ©
WIER & ASSOCIATES, INC.
LAST SHEET EDIT
DATE: 09-16-2013
WA# 08029

SHEET NO.
D106