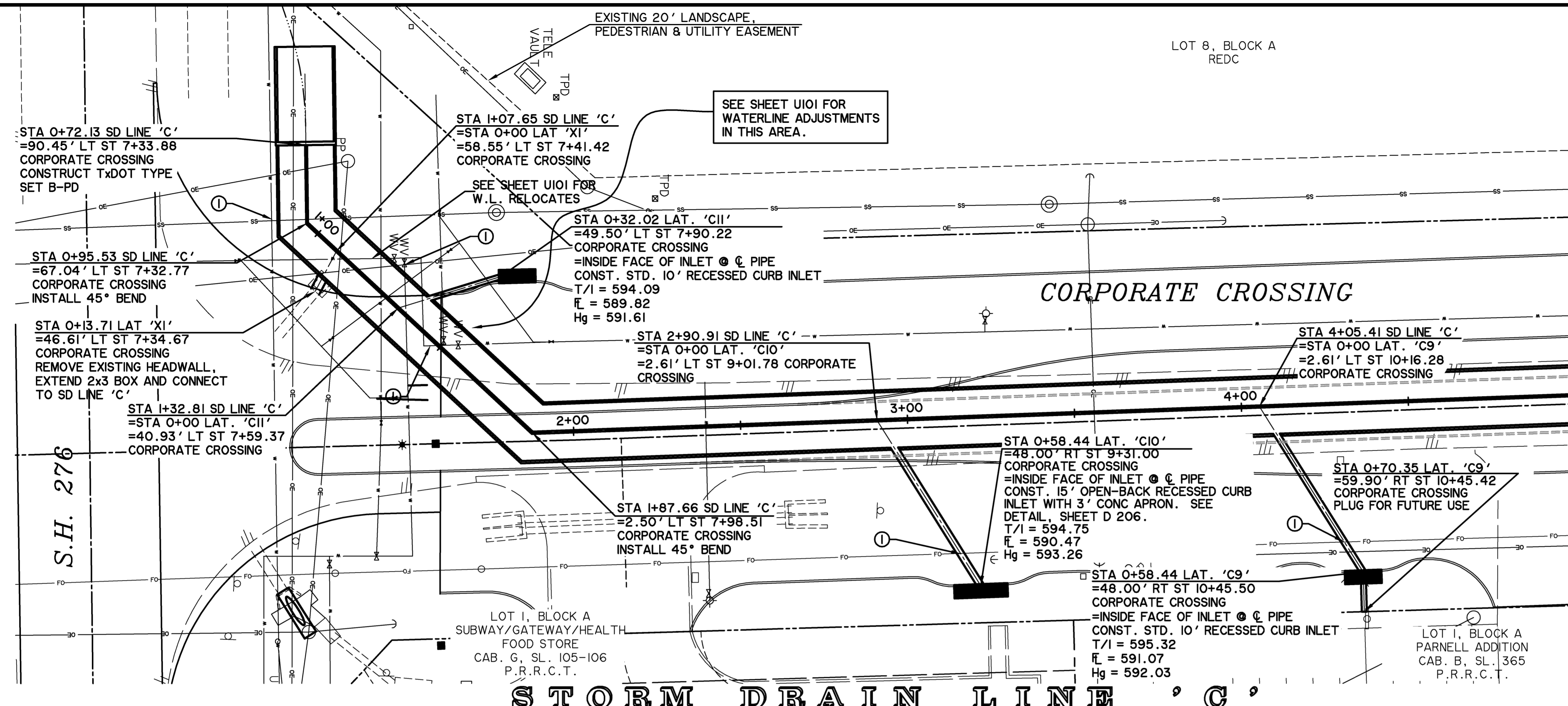


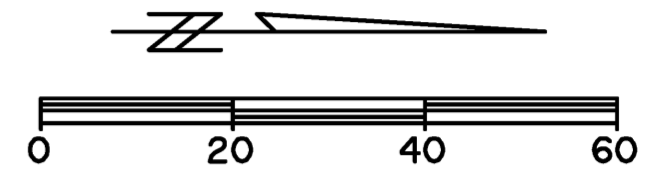
TIME 15:52 FILE: D105-SD-LN-C.dwg



NOTES:

- CONTRACTOR SHALL FIELD VERIFY ALL UTILITY CROSSINGS PRIOR TO CONSTRUCTION AND SHALL NOTIFY ENGINEER OF ANY DISCREPANCIES IMMEDIATELY.
- INSTALL 2'x2' FLOW EQUILIZATION WINDOWS EVERY 25' ON INTERIOR WALLS OF 2-8x4 BOX.

CAUTION !!
EXISTING UTILITIES ARE INDICATED ON THE PLANS FROM AVAILABLE INFORMATION. IT SHALL BE THE RESPONSIBILITY OF THE CONTRACTOR TO VERIFY THE LOCATION OF ALL UTILITIES, TO NOTIFY ALL UTILITY COMPANIES OF THE CONTRACTORS OPERATIONS, TO PROTECT ALL UTILITIES FROM DAMAGE, TO REPAIR ALL UTILITIES DAMAGED DUE TO THE CONTRACTORS OPERATIONS, AND TO NOTIFY THE ENGINEER PROMPTLY OF ALL CONFLICTS OF THE WORK WITH EXISTING UTILITIES.



BENCH MARKS

BM A AN "C" CUT IN CONCRETE PAD OF A WATER VALVE MANHOLE LOCATED +/- 55' EAST OF THE EDGE OF PAVEMENT OF FM 549 AND +/-150' SOUTH OF THE EDGE OF PAVEMENT OF SH 276. 595.66 FT. N 7018916.83, E 2607403.98

BM B AN "C" CUT IN A LIGHT POLE BASE +/-40' WEST OF THE EDGE OF PAVEMENT OF CORPORATE CROSSING AND +/-0.30 MILES SOUTH OF THE EDGE OF PAVEMENT OF IH 30. 581.56 FT. N 7022945.40, E 2607163.95

STORM DRAIN LINE 'C'

PROP. # OF PIPE	STATION	DESCRIPTION	PROPERTIES	ELEVATION
1	1+00	23 LF OF 2-8x4 BOX @ 0.13%	Q ₁₀₀ = 332.8 cfs Q _c = 340.0 cfs S _f = 0.14% V = 5.2 fps V ² /2g = 0.42	H.G. = 590.34 kj = 0.50 hj = 0.21 H.G. = 590.13
1	1+00	12 LF OF 2-8x4 BOX @ 0.25%	Q ₁₀₀ = 332.8 cfs Q _c = 471.4 cfs S _f = 0.14% V = 5.2 fps V ² /2g = 0.42	H.G. = 590.71 kj = 0.20 hj = 0.35 H.G. = 590.36
1	1+00	25 LF OF 2-8x4 BOX @ 0.20%	Q ₁₀₀ = 300.3 cfs Q _c = 421.7 cfs S _f = 0.11% V = 4.7 fps V ² /2g = 0.34	H.G. = 590.92 kj = 0.50 hj = 0.17 H.G. = 590.74
1	2+00	55 LF OF 2-8x4 BOX @ 0.20%		H.G. = 591.15 kj = 0.50 H.G. = 590.98
1	2+00	103 LF OF 2-8x4 BOX @ 0.30%		H.G. = 591.43 kj = 0.50 hj = 0.17 H.G. = 591.26
1	2+00	115 LF OF 2-8x4 BOX @ 0.30%		H.G. = 591.72 kj = 0.50 hj = 0.16 H.G. = 591.56
1	2+00	95 LF OF 2-8x4 BOX @ 0.30%		H.G. = 591.72 kj = 0.50 hj = 0.16 H.G. = 591.56
1	3+00	RELOCATE EX. 12' W.L.	Q ₁₀₀ = 297.3 cfs Q _c = 516.4 cfs S _f = 0.11% V = 4.6 fps V ² /2g = 0.33'	
1	3+00	RELOCATE EX. 12' W.L.	Q ₁₀₀ = 288.0 cfs Q _c = 516.4 cfs S _f = 0.11% V = 4.5 fps V ² /2g = 0.31'	
1	3+00	RELOCATE EX. 12' W.L.	Q ₁₀₀ = 282.2 cfs Q _c = 516.4 cfs S _f = 0.10% V = 4.4 fps V ² /2g = 0.30'	
1	4+00	23 LF OF 2-8x4 BOX @ 0.13%	Q ₁₀₀ = 332.8 cfs Q _c = 340.0 cfs S _f = 0.14% V = 5.2 fps V ² /2g = 0.42	H.G. = 590.34 kj = 0.50 hj = 0.21 H.G. = 590.13
1	4+00	12 LF OF 2-8x4 BOX @ 0.25%	Q ₁₀₀ = 332.8 cfs Q _c = 471.4 cfs S _f = 0.14% V = 5.2 fps V ² /2g = 0.42	H.G. = 590.71 kj = 0.20 hj = 0.35 H.G. = 590.36
1	4+00	25 LF OF 2-8x4 BOX @ 0.20%	Q ₁₀₀ = 300.3 cfs Q _c = 421.7 cfs S _f = 0.11% V = 4.7 fps V ² /2g = 0.34	H.G. = 590.92 kj = 0.50 hj = 0.17 H.G. = 590.74
1	4+00	55 LF OF 2-8x4 BOX @ 0.20%		H.G. = 591.15 kj = 0.50 H.G. = 590.98
1	4+00	103 LF OF 2-8x4 BOX @ 0.30%		H.G. = 591.43 kj = 0.50 hj = 0.17 H.G. = 591.26
1	4+00	115 LF OF 2-8x4 BOX @ 0.30%		H.G. = 591.72 kj = 0.50 hj = 0.16 H.G. = 591.56
1	4+00	95 LF OF 2-8x4 BOX @ 0.30%		H.G. = 591.72 kj = 0.50 hj = 0.16 H.G. = 591.56
1	5+00	23 LF OF 2-8x4 BOX @ 0.13%	Q ₁₀₀ = 332.8 cfs Q _c = 340.0 cfs S _f = 0.14% V = 5.2 fps V ² /2g = 0.42	H.G. = 590.34 kj = 0.50 hj = 0.21 H.G. = 590.13
1	5+00	12 LF OF 2-8x4 BOX @ 0.25%	Q ₁₀₀ = 332.8 cfs Q _c = 471.4 cfs S _f = 0.14% V = 5.2 fps V ² /2g = 0.42	H.G. = 590.71 kj = 0.20 hj = 0.35 H.G. = 590.36
1	5+00	25 LF OF 2-8x4 BOX @ 0.20%	Q ₁₀₀ = 300.3 cfs Q _c = 421.7 cfs S _f = 0.11% V = 4.7 fps V ² /2g = 0.34	H.G. = 590.92 kj = 0.50 hj = 0.17 H.G. = 590.74
1	5+00	55 LF OF 2-8x4 BOX @ 0.20%		H.G. = 591.15 kj = 0.50 H.G. = 590.98
1	5+00	103 LF OF 2-8x4 BOX @ 0.30%		H.G. = 591.43 kj = 0.50 hj = 0.17 H.G. = 591.26
1	5+00	115 LF OF 2-8x4 BOX @ 0.30%		H.G. = 591.72 kj = 0.50 hj = 0.16 H.G. = 591.56
1	5+00	95 LF OF 2-8x4 BOX @ 0.30%		H.G. = 591.72 kj = 0.50 hj = 0.16 H.G. = 591.56

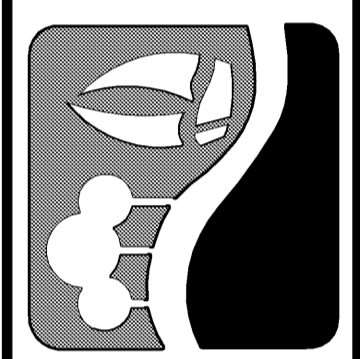
NOTES FOR WORK IN NTMWD EASEMENT:

- CONTACT PAUL LYDAY, NTMWD ENGINEERING @ 972-442-5405 48 HOURS IN ADVANCE OF ANY WORK WITHIN NTMWD EASEMENT
- FRANCHISE AND PUBLIC UTILITIES ARE NOT PERMITTED IN NTMWD EASEMENT EXCEPT FOR CROSSINGS
- CONTRACTOR SHALL TAKE CARE TO AVOID DAMAGE TO EXISTING PIPELINE WHEN WORKING IN NTMWD EASEMENT. ANY DAMAGE TO PIPELINE RESULTING FROM CONSTRUCTION ACTIVITIES SHALL BE REPAIRED BY CONTRACTOR TO THE SATISFACTION OF NTMWD AT CONTRACTOR'S EXPENSE.

RECORD DRAWING 10/11/2013

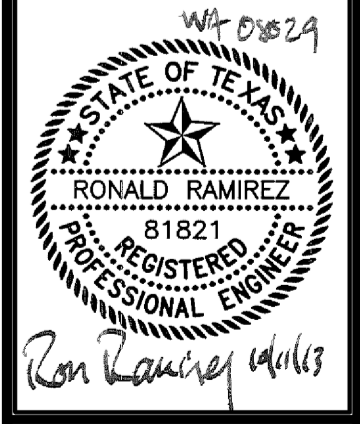
TO THE BEST OF OUR KNOWLEDGE WIER & ASSOCIATES, INC., HERBY STATES THAT THIS PLAN IS AS-BUILT. THIS INFORMATION PROVIDED IS BASED ON SURVEYING AT THE SITE AND INFORMATION PROVIDED BY THE CONTRACTOR.

PREPARED BY:
WIER & ASSOCIATES, INC.
ENGINEERS SURVEYORS LAND PLANNERS
701 HIGHLANDER BLVD., SUITE 300 ARLINGTON, TEXAS 76015 METRO (817)467-7700
www.WierAssociates.com
Texas Firm Registration No. F-2776



CITY OF ROCKWALL IMPROVEMENTS TO CORPORATE CROSSING (FROM S.H. 276 TO I.H. 30)

STORM DRAIN LINE 'C' STA 0+50 TO STA 5+00



COPYRIGHT © WIER & ASSOCIATES, INC.
LAST SHEET EDIT DATE: 09-16-2013
WA# 08029
SHEET NO. D105