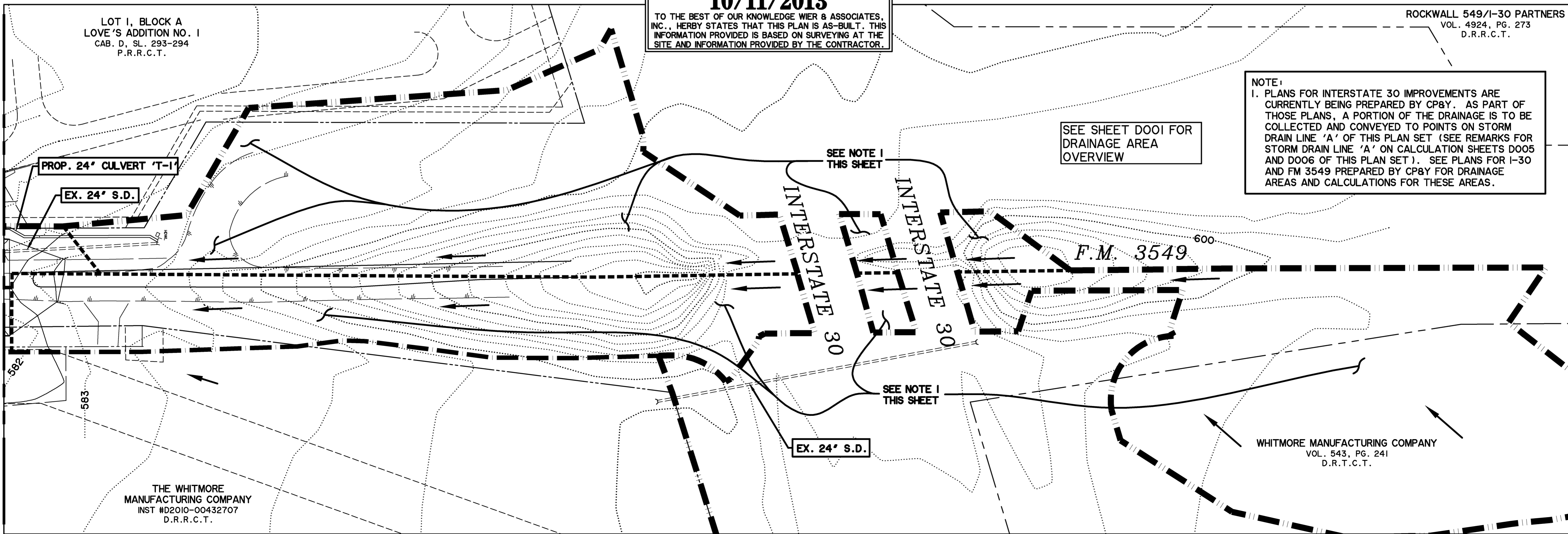
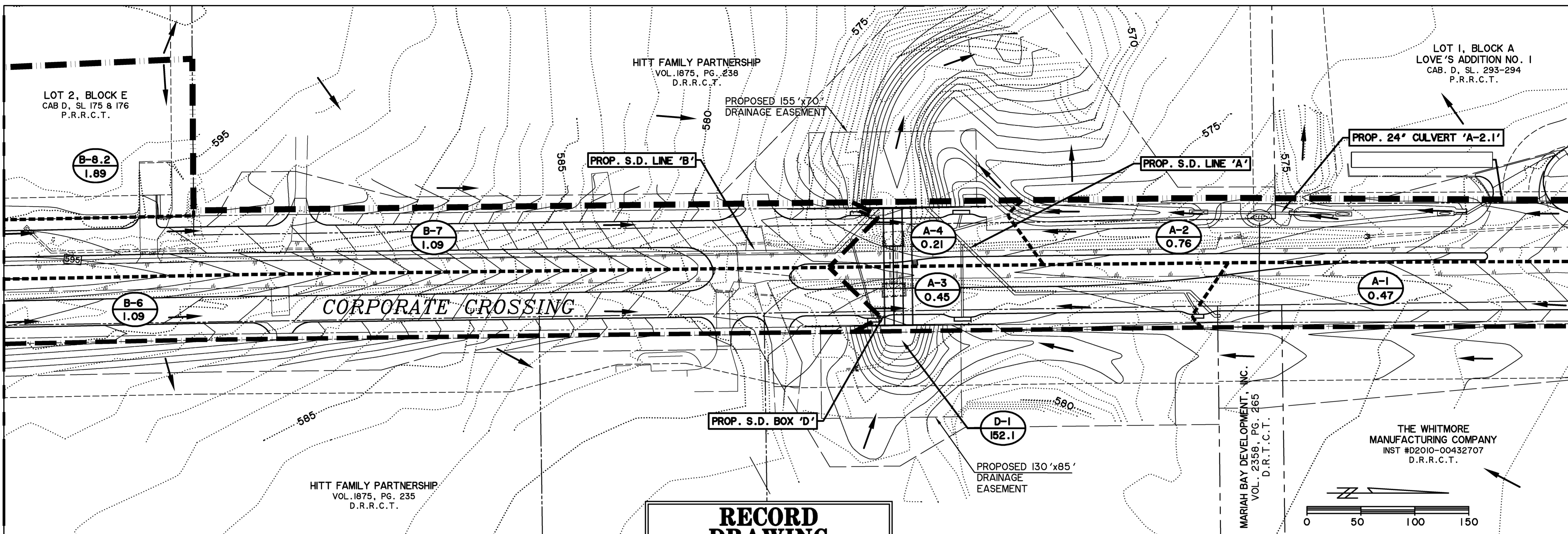


TIME: 9/15/17 FILE: D003-Dmmp2-08029.dwg

MATCH LINE SHEET DOO2

MATCH LINE THIS SHEET

MATCH LINE THIS SHEET



RECORD DRAWING
10/11/2013
 TO THE BEST OF OUR KNOWLEDGE WIER & ASSOCIATES, INC., HERBY STATES THAT THIS PLAN IS AS-BUILT. THIS INFORMATION PROVIDED IS BASED ON SURVEYING AT THE SITE AND INFORMATION PROVIDED BY THE CONTRACTOR.

NOTE:
 1. PLANS FOR INTERSTATE 30 IMPROVEMENTS ARE CURRENTLY BEING PREPARED BY CP&Y. AS PART OF THOSE PLANS, A PORTION OF THE DRAINAGE IS TO BE COLLECTED AND CONVEYED TO POINTS ON STORM DRAIN LINE 'A' OF THIS PLAN SET (SEE REMARKS FOR STORM DRAIN LINE 'A' ON CALCULATION SHEETS DO05 AND DO06 OF THIS PLAN SET). SEE PLANS FOR I-30 AND FM 3549 PREPARED BY CP&Y FOR DRAINAGE AREAS AND CALCULATIONS FOR THESE AREAS.

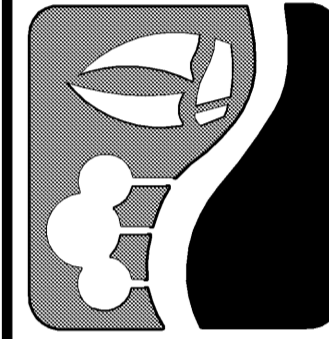
SEE SHEET DOO1 FOR DRAINAGE AREA OVERVIEW

SEE NOTE 1 THIS SHEET

SEE NOTE 1 THIS SHEET

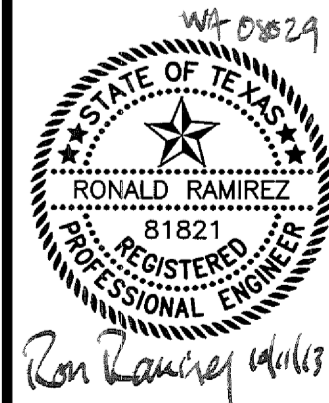


PREPARED BY:
WIER & ASSOCIATES, INC.
 ENGINEERS SURVEYORS LAND PLANNERS
 701 HIGHLANDER BLVD., SUITE 300 ARLINGTON, TEXAS 76015 METRO (817)467-7700
 Texas Firm Registration No. F-2776 www.WierAssociates.com



CITY OF ROCKWALL
 IMPROVEMENTS TO
 CORPORATE CROSSING
 (FROM S.H. 276 TO I.H. 30)

DRAINAGE AREA MAP



WHITMORE MANUFACTURING COMPANY
 VOL. 543, PG. 241
 D.R.T.C.T.

COPYRIGHT ©
 WIER & ASSOCIATES, INC.
 LAST SHEET EDIT
 DATE: 09-13-2013
 WA# 08029

SHEET NO.
DO03