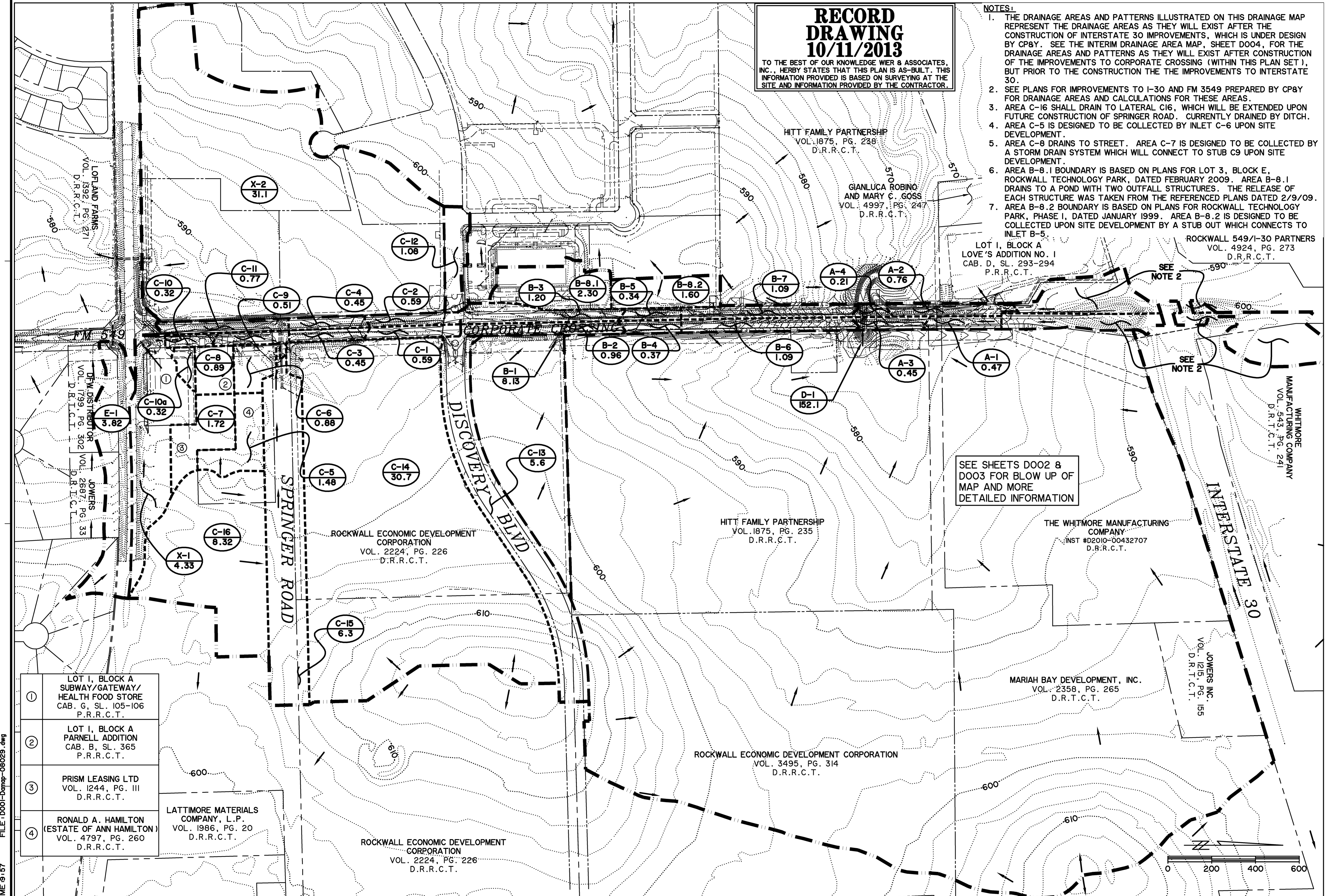


# RECORD DRAWING 10/11/2013

TO THE BEST OF OUR KNOWLEDGE WIER & ASSOCIATES, INC., HERBY STATES THAT THIS PLAN IS AS-BUILT. THIS INFORMATION PROVIDED IS BASED ON SURVEYING AT THE SITE AND INFORMATION PROVIDED BY THE CONTRACTOR.

### NOTES:

1. THE DRAINAGE AREAS AND PATTERNS ILLUSTRATED ON THIS DRAINAGE MAP REPRESENT THE DRAINAGE AREAS AS THEY WILL EXIST AFTER THE CONSTRUCTION OF INTERSTATE 30 IMPROVEMENTS, WHICH IS UNDER DESIGN BY CP&Y. SEE THE INTERIM DRAINAGE AREA MAP, SHEET D004, FOR THE DRAINAGE AREAS AND PATTERNS AS THEY WILL EXIST AFTER CONSTRUCTION OF THE IMPROVEMENTS TO CORPORATE CROSSING (WITHIN THIS PLAN SET), BUT PRIOR TO THE CONSTRUCTION OF THE IMPROVEMENTS TO INTERSTATE 30.
2. SEE PLANS FOR IMPROVEMENTS TO I-30 AND FM 3549 PREPARED BY CP&Y FOR DRAINAGE AREAS AND CALCULATIONS FOR THESE AREAS.
3. AREA C-16 SHALL DRAIN TO LATERAL C16, WHICH WILL BE EXTENDED UPON FUTURE CONSTRUCTION OF SPRINGER ROAD. CURRENTLY DRAINED BY DITCH.
4. AREA C-5 IS DESIGNED TO BE COLLECTED BY INLET C-6 UPON SITE DEVELOPMENT.
5. AREA C-8 DRAINS TO STREET. AREA C-7 IS DESIGNED TO BE COLLECTED BY A STORM DRAIN SYSTEM WHICH WILL CONNECT TO STUB C9 UPON SITE DEVELOPMENT.
6. AREA B-8.1 BOUNDARY IS BASED ON PLANS FOR LOT 3, BLOCK E, ROCKWALL TECHNOLOGY PARK, DATED FEBRUARY 2009. AREA B-8.1 DRAINS TO A POND WITH TWO OUTFALL STRUCTURES. THE RELEASE OF EACH STRUCTURE WAS TAKEN FROM THE REFERENCED PLANS DATED 2/9/09.
7. AREA B-8.2 BOUNDARY IS BASED ON PLANS FOR ROCKWALL TECHNOLOGY PARK, PHASE I, DATED JANUARY 1999. AREA B-8.2 IS DESIGNED TO BE COLLECTED UPON SITE DEVELOPMENT BY A STUB OUT WHICH CONNECTS TO INLET B-5.



HITT FAMILY PARTNERSHIP  
VOL. 1875, PG. 238  
D.R.R.C.T.

GIANLUCA ROBINO  
AND MARY C. GOSS  
VOL. 4997, PG. 247  
D.R.R.C.T.

LOT 1, BLOCK A  
LOVE'S ADDITION NO. 1  
CAB. D, SL. 293-294  
P.R.R.C.T.

ROCKWALL 549/I-30 PARTNERS  
VOL. 4924, PG. 273  
D.R.R.C.T.

WHITMORE  
MANUFACTURING COMPANY  
VOL. 543, PG. 241  
D.R.T.C.T.

THE WHITMORE MANUFACTURING  
COMPANY  
INST #D2010-00432707  
D.R.R.C.T.

MARIAH BAY DEVELOPMENT, INC.  
VOL. 2358, PG. 265  
D.R.T.C.T.

JOWERS INC.  
VOL. 1215, PG. 155  
D.R.T.C.T.

ROCKWALL ECONOMIC DEVELOPMENT CORPORATION  
VOL. 3495, PG. 314  
D.R.R.C.T.

ROCKWALL ECONOMIC DEVELOPMENT CORPORATION  
VOL. 2224, PG. 226  
D.R.R.C.T.

ROCKWALL ECONOMIC DEVELOPMENT CORPORATION  
VOL. 2224, PG. 226  
D.R.R.C.T.

LATTIMORE MATERIALS COMPANY, L.P.  
VOL. 1986, PG. 20  
D.R.R.C.T.

① LOT 1, BLOCK A  
SUBWAY/GATEWAY/  
HEALTH FOOD STORE  
CAB. G, SL. 105-106  
P.R.R.C.T.

② LOT 1, BLOCK A  
PARNELL ADDITION  
CAB. B, SL. 365  
P.R.R.C.T.

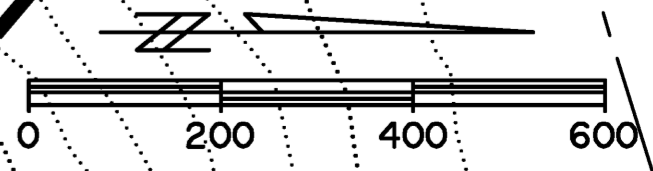
③ PRISM LEASING LTD  
VOL. 1244, PG. III  
D.R.R.C.T.

④ RONALD A. HAMILTON  
(ESTATE OF ANN HAMILTON)  
VOL. 4797, PG. 260  
D.R.R.C.T.

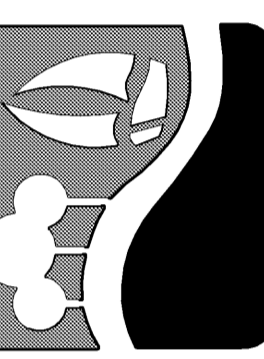
SEE SHEETS D002 &  
D003 FOR BLOW UP OF  
MAP AND MORE  
DETAILED INFORMATION

SEE NOTE 2

SEE NOTE 2



PREPARED BY:  
**WIA WIER & ASSOCIATES, INC.**  
ENGINEERS SURVEYORS LAND PLANNERS  
701 HIGHLANDER BLVD., SUITE 300 ARLINGTON, TEXAS 76015 METRO (817)467-7700  
www.WierAssociates.com  
Texas Firm Registration No. F-2776



**CITY OF ROCKWALL  
IMPROVEMENTS TO  
CORPORATE CROSSING  
(FROM S.H. 276 TO I.H. 30)**

**DRAINAGE AREA MAP  
OVERVIEW**



COPYRIGHT ©  
WIER & ASSOCIATES, INC.  
LAST SHEET EDIT  
DATE: 09-18-2013  
WA# 08029

**SHEET NO.  
D001**

FILE: D001-Dump-08029.dwg  
TIME: 9:15:7