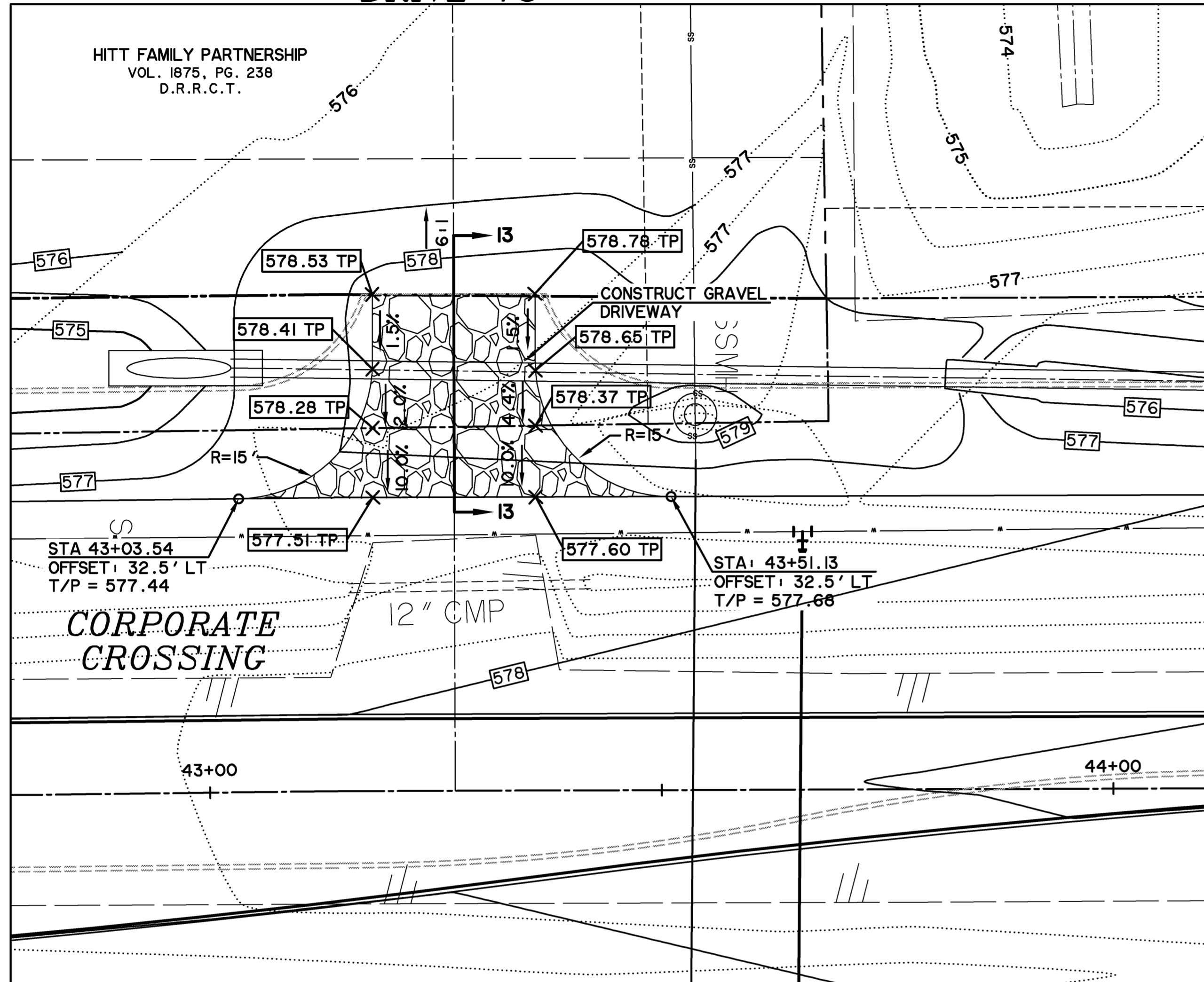
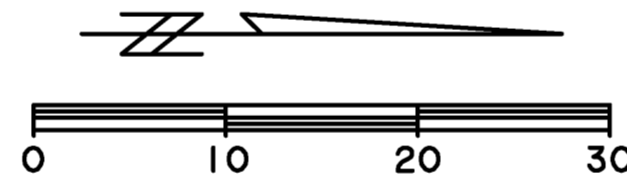
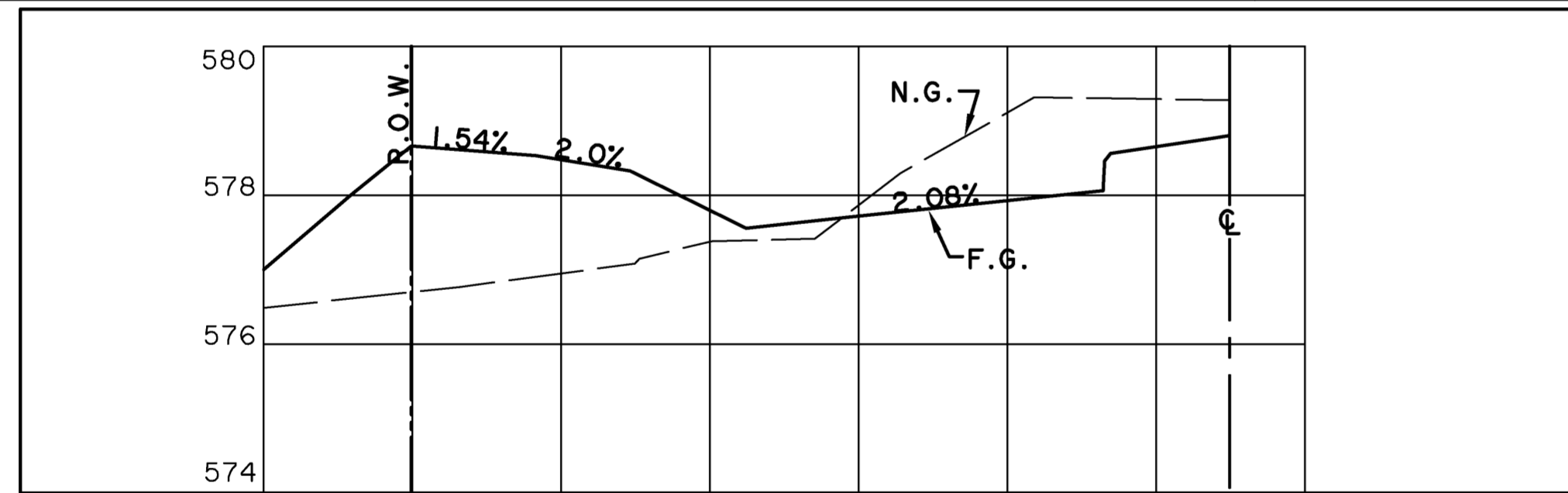
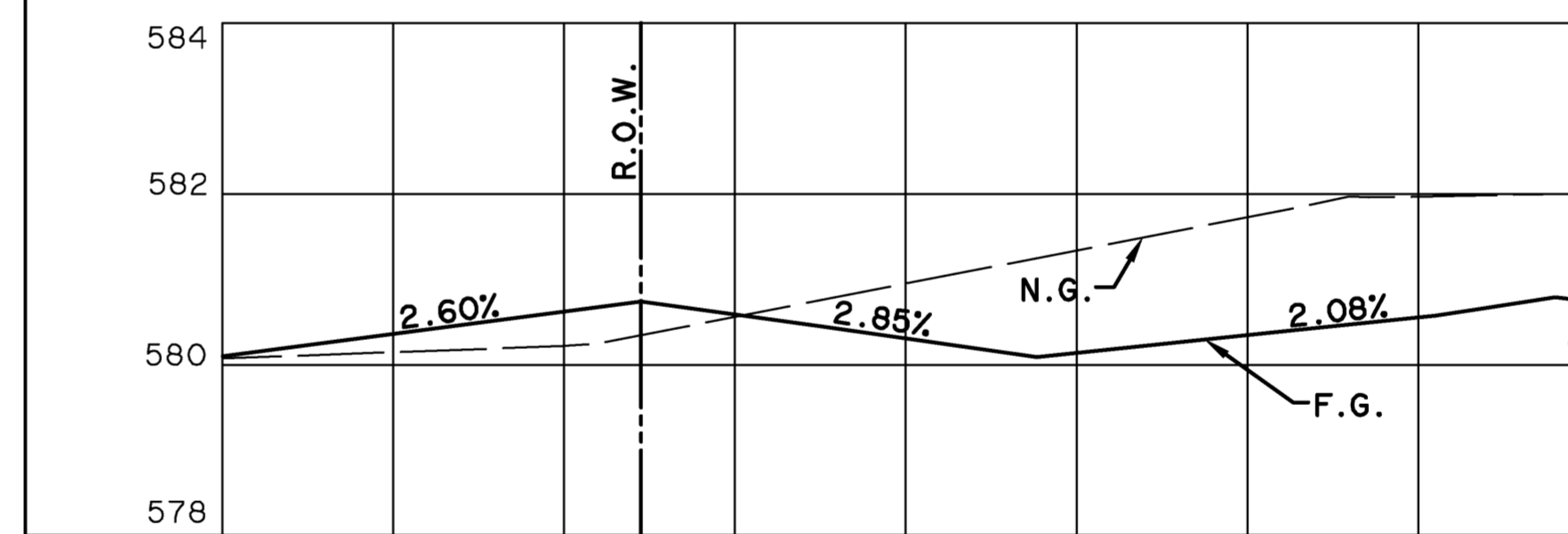
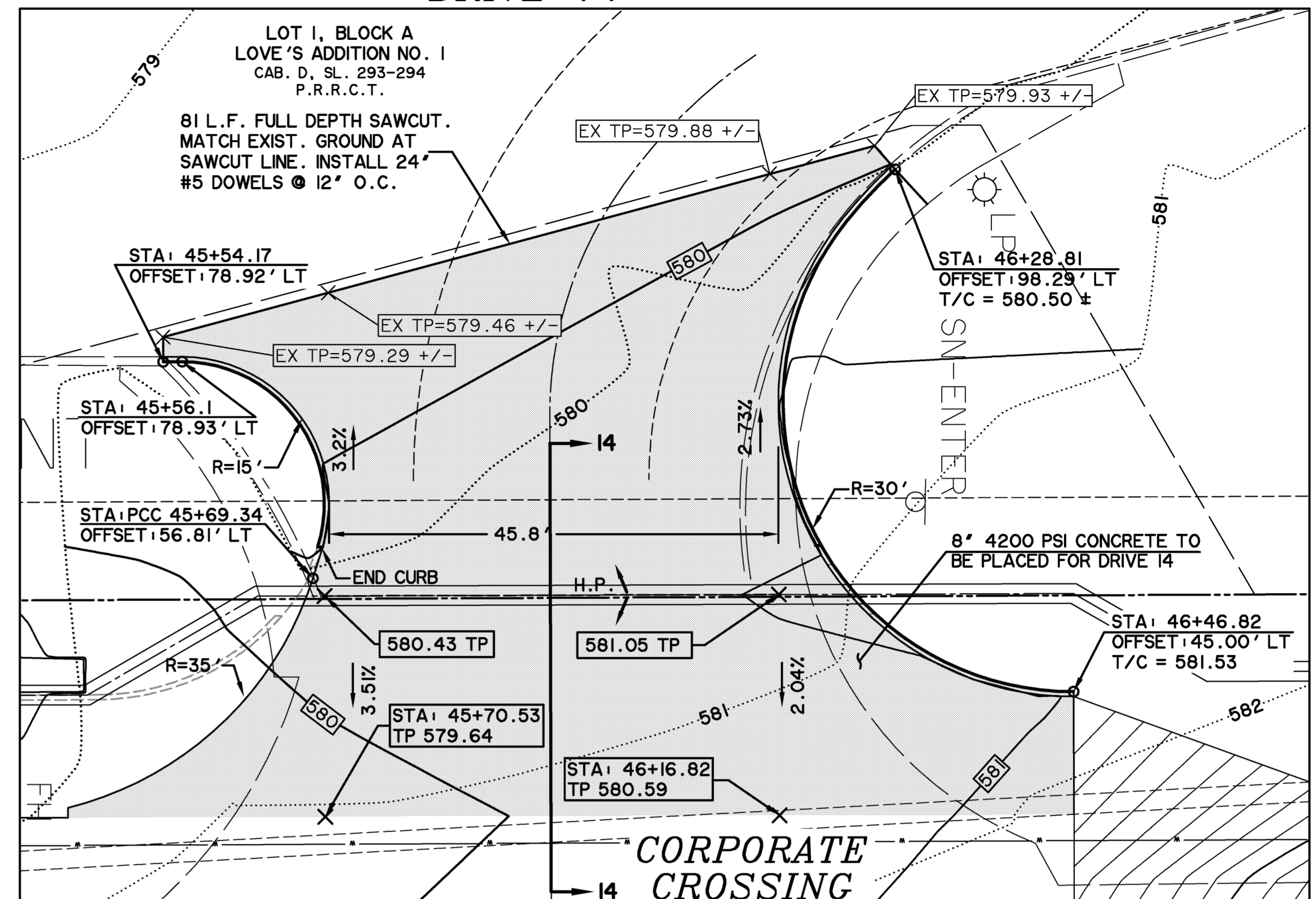


DRIVE 13



DRIVE 14



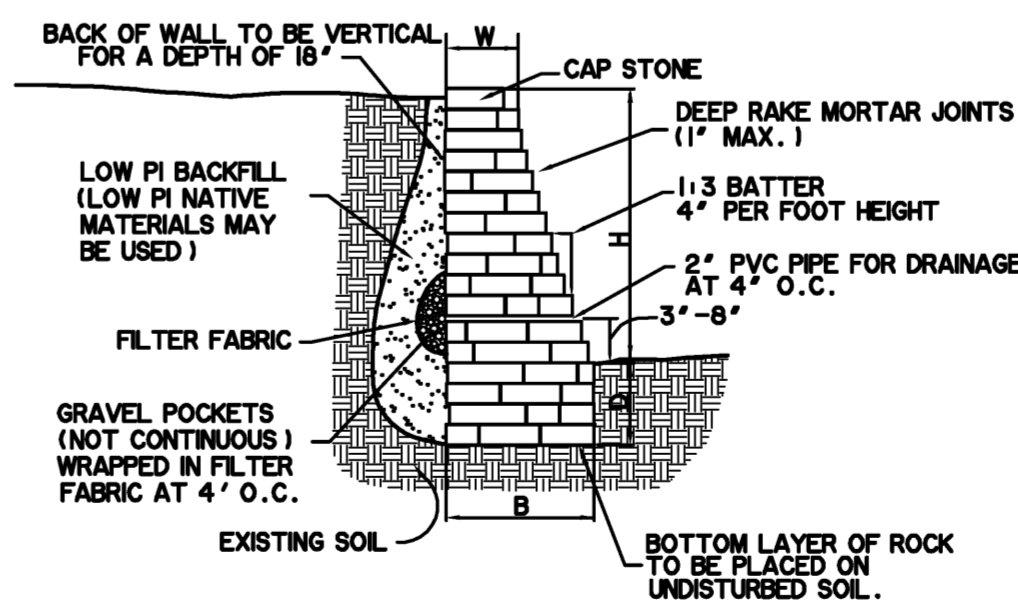
DRIVEWAY NOTES:

- SEE SHEETS RI01 TO RI06 FOR REMOVALS
- GRAVEL SHALL MEET N.C.T.C.O.G. STANDARD SPECIFICATIONS FOR PUBLIC WORKS CONSTRUCTION 2.1.3, AND BE A MINIMUM OF 6" IN THICKNESS.

NOTES FOR WORK IN NTMWD EASEMENT:

- CONTACT PAUL LYDAY, NTMWD ENGINEERING @ 972-442-5405 48 HOURS IN ADVANCE OF ANY WORK WITHIN NTMWD EASEMENT
- FRANCHISE AND PUBLIC UTILITIES ARE NOT PERMITTED IN NTMWD EASEMENT EXCEPT FOR CROSSINGS
- CONTRACTOR SHALL TAKE CARE TO AVOID DAMAGE TO EXISTING PIPELINE WHEN WORKING IN NTMWD EASEMENT. ANY DAMAGE TO PIPELINE RESULTING FROM CONSTRUCTION ACTIVITIES SHALL BE REPAIRED BY CONTRACTOR TO THE SATISFACTION OF NTMWD AT CONTRACTOR'S EXPENSE.

- NOTES:
- CONTRACTOR SHALL TAKE ALL NECESSARY CONSTRUCTION MEASURES TO PRESERVE THE EXISTING TREES, INCLUDING THE INSTALLATION OF GEOGRID/FABRIC AND ALL BACKFILL.
 - ALL FILL AND BACKFILL SHALL BE COMPACTED TO A MINIMUM OF 95% OF THE STANDARD PROCTOR MAXIMUM
 - ALL STONE SHALL BE BLOCKS OF 8" IN HEIGHT.
 - CONTRACTOR SHALL COORDINATE WITH CITY INSPECTOR ON COLOR AVAILABILITY AND SELECTION PRIOR TO ORDERING MATERIALS.
 - CONTRACTOR SHALL SUBMIT MATERIALS AND CONSTRUCTION METHODS TO ENGINEER FOR APPROVAL.



| WALL DESIGN DIMENSIONS | | | |
|------------------------|----------|----------|----------|
| WALL HEIGHTS - H | B | D | W |
| 0' TO 4' | 16" MIN. | 12" MIN. | 12" MIN. |

STONEWALL SECTION

N.T.S.

CAUTION !!

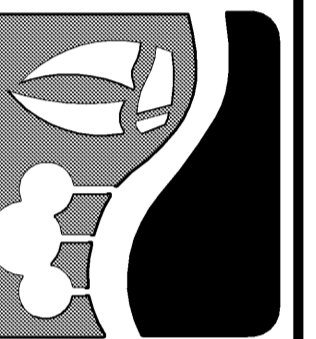
EXISTING UTILITIES ARE INDICATED ON THE PLANS FROM AVAILABLE INFORMATION. IT SHALL BE THE RESPONSIBILITY OF THE CONTRACTOR TO VERIFY THE LOCATION OF ALL UTILITIES, TO NOTIFY ALL UTILITY COMPANIES OF THE CONTRACTORS OPERATIONS, TO PROTECT ALL UTILITIES FROM DAMAGE, TO REPAIR ALL UTILITIES DAMAGED DUE TO THE CONTRACTORS OPERATIONS, AND TO NOTIFY THE ENGINEER PROMPTLY OF ALL CONFLICTS OF THE WORK WITH EXISTING UTILITIES.

BENCH MARKS

BM A AN "C" CUT IN CONCRETE PAD OF A WATER VALVE MANHOLE LOCATED +/- 55' EAST OF THE EDGE OF PAVEMENT OF FM 549 AND +/-150' SOUTH OF THE EDGE OF PAVEMENT OF SH 276. 595.66 FT. N 7018916.83, E 2607403.98

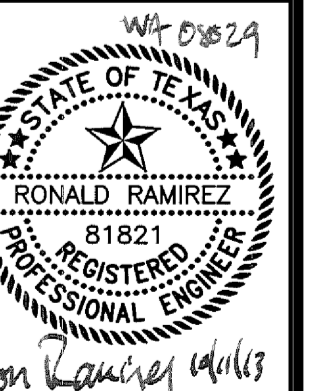
BM B AN "C" CUT IN A LIGHT POLE BASE +/-40' WEST OF THE EDGE OF PAVEMENT OF CORPORATE CROSSING AND +/-0.30 MILES SOUTH OF THE EDGE OF PAVEMENT OF IH 30. 581.56 FT. N 7022945.40, E 2607163.95

PREPARED BY:
WIER & ASSOCIATES, INC.
ENGINEERS SURVEYORS LAND PLANNERS
701 HIGHLANDER BLVD., SUITE 300 ARLINGTON, TEXAS 76015 METRO (817)467-7700
www.WierAssociates.com
Texas Firm Registration No. F-2776



CITY OF ROCKWALL
IMPROVEMENTS TO
CORPORATE CROSSING
(FROM S.H. 276 TO I.H. 30)

DRIVEWAY PLANS



COPYRIGHT ©
WIER & ASSOCIATES, INC.
LAST SHEET EDIT
DATE: 09-13-2013
WA# 08029

SHEET NO.
P113

RECORD DRAWING
10/11/2013

TO THE BEST OF OUR KNOWLEDGE WIER & ASSOCIATES, INC., HERBY STATES THAT THIS PLAN IS AS-BUILT. THIS INFORMATION PROVIDED IS BASED ON SURVEYING AT THE SITE AND INFORMATION PROVIDED BY THE CONTRACTOR.