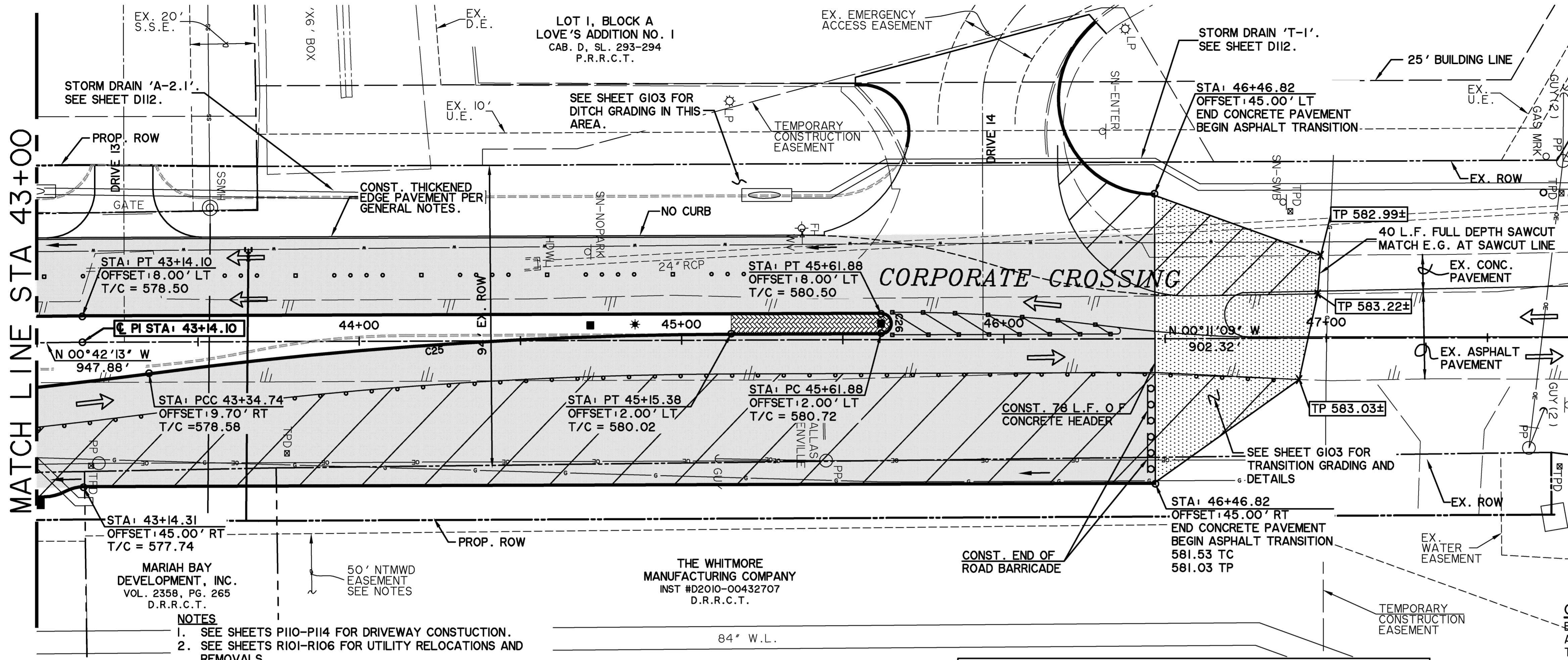


TIME:10.08 FILE: P108-PAVING.dwg



* BENCH MARKS *

BM A AN "I" CUT IN CONCRETE PAD OF A WATER VALVE MANHOLE LOCATED +/- 55' EAST OF THE EDGE OF PAVEMENT OF FM 549 AND +/- 150' SOUTH OF THE EDGE OF PAVEMENT OF SH 276. 595.66 FT. N 7018916.83, E 2607403.98

BM B AN "I" CUT IN A LIGHT POLE BASE +/- 40' WEST OF THE EDGE OF PAVEMENT OF CORPORATE CROSSING AND +/- 0.30 MILES SOUTH OF THE EDGE OF PAVEMENT OF IH 30. 581.56 FT. N 7022945.40, E 2607163.95

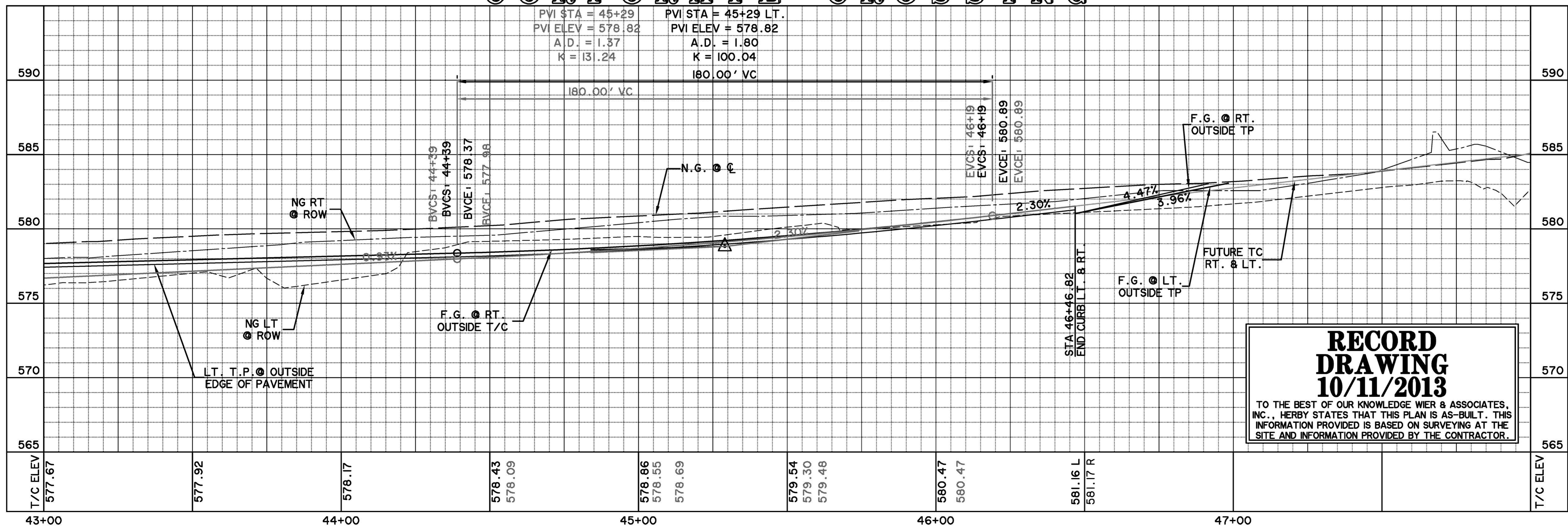
- NOTES FOR WORK IN NTMWD EASEMENT:**
- CONTACT PAUL LYDAY, NTMWD ENGINEERING @ 972-442-5405 48 HOURS IN ADVANCE OF ANY WORK WITHIN NTMWD EASEMENT
 - FRANCHISE AND PUBLIC UTILITIES ARE NOT PERMITTED IN NTMWD EASEMENT EXCEPT FOR CROSSINGS
 - CONTRACTOR SHALL TAKE CARE TO AVOID DAMAGE TO EXISTING PIPELINE WHEN WORKING IN NTMWD EASEMENT. ANY DAMAGE TO PIPELINE RESULTING FROM CONSTRUCTION ACTIVITIES SHALL BE REPAIRED BY CONTRACTOR TO THE SATISFACTION OF NTMWD AT CONTRACTOR'S EXPENSE.

CAUTION !!
EXISTING UTILITIES ARE INDICATED ON THE PLANS FROM AVAILABLE INFORMATION. IT SHALL BE THE RESPONSIBILITY OF THE CONTRACTOR TO VERIFY THE LOCATION OF ALL UTILITIES, TO NOTIFY ALL UTILITY COMPANIES OF THE CONTRACTORS OPERATIONS, TO PROTECT ALL UTILITIES FROM DAMAGE, TO REPAIR ALL UTILITIES DAMAGED DUE TO THE CONTRACTORS OPERATIONS, AND TO NOTIFY THE ENGINEER PROMPTLY OF ALL CONFLICTS OF THE WORK WITH EXISTING UTILITIES.

- NOTES**
- SEE SHEETS P110-P114 FOR DRIVEWAY CONSTRUCTION.
 - SEE SHEETS R101-R106 FOR UTILITY RELOCATIONS AND REMOVALS.
 - SEE SHEETS M101-M102 FOR STRIPING AND SIGNAGE PLANS.
 - SEE SHEETS G101-G103 FOR GRADING PLANS
 - STREET STATION & OFFSETS FOR INLETS ARE AT THE CENTERLINE OF THE INLET, INSIDE FACE AT THE BACK OF CURB.

CURVE TABLE						
NO.	RADIUS	DELTA	ARC	TANGENT	CHORD	BEARING
C25	1400.50'	7°24'39"	181.14'	90.70'	181.02'	S03°53'28"E
C26	3.00'	180°00'00"	9.42'	INFINITE	6.00'	S89°48'51"W

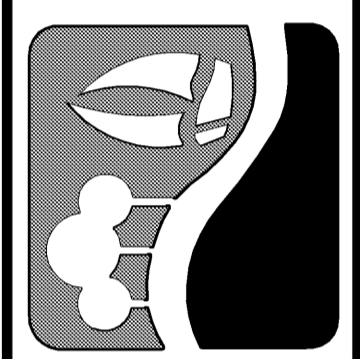
CORPORATE CROSSING



RECORD DRAWING
10/11/2013

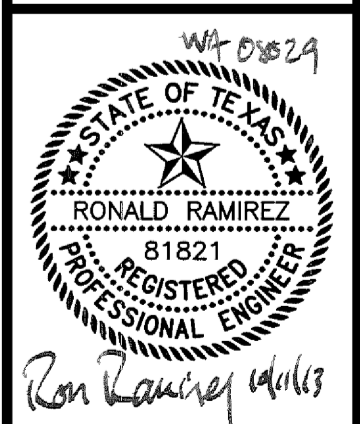
TO THE BEST OF OUR KNOWLEDGE WIER & ASSOCIATES, INC., HERBY STATES THAT THIS PLAN IS AS-BUILT. THIS INFORMATION PROVIDED IS BASED ON SURVEYING AT THE SITE AND INFORMATION PROVIDED BY THE CONTRACTOR.

WIER & ASSOCIATES, INC.
 ENGINEERS SURVEYORS LAND PLANNERS
 701 HIGHLANDER BLVD., SUITE 300 ARLINGTON, TEXAS 76015 METRO (817)467-7700
 www.wierassociates.com
 Texas Firm Registration No. F-2776



CITY OF ROCKWALL
 IMPROVEMENTS TO
 CORPORATE CROSSING
 (FROM S.H. 276 TO I.H. 30)

PAVING
PLAN & PROFILE
 STA 43+00 TO STA 48+00



COPYRIGHT ©
 WIER & ASSOCIATES, INC.
 LAST SHEET OF IT
 DATE: 08-15-2013
 WA# 08029
SHEET NO.
P108